

Library/Learning Commons

Schematic Design Update



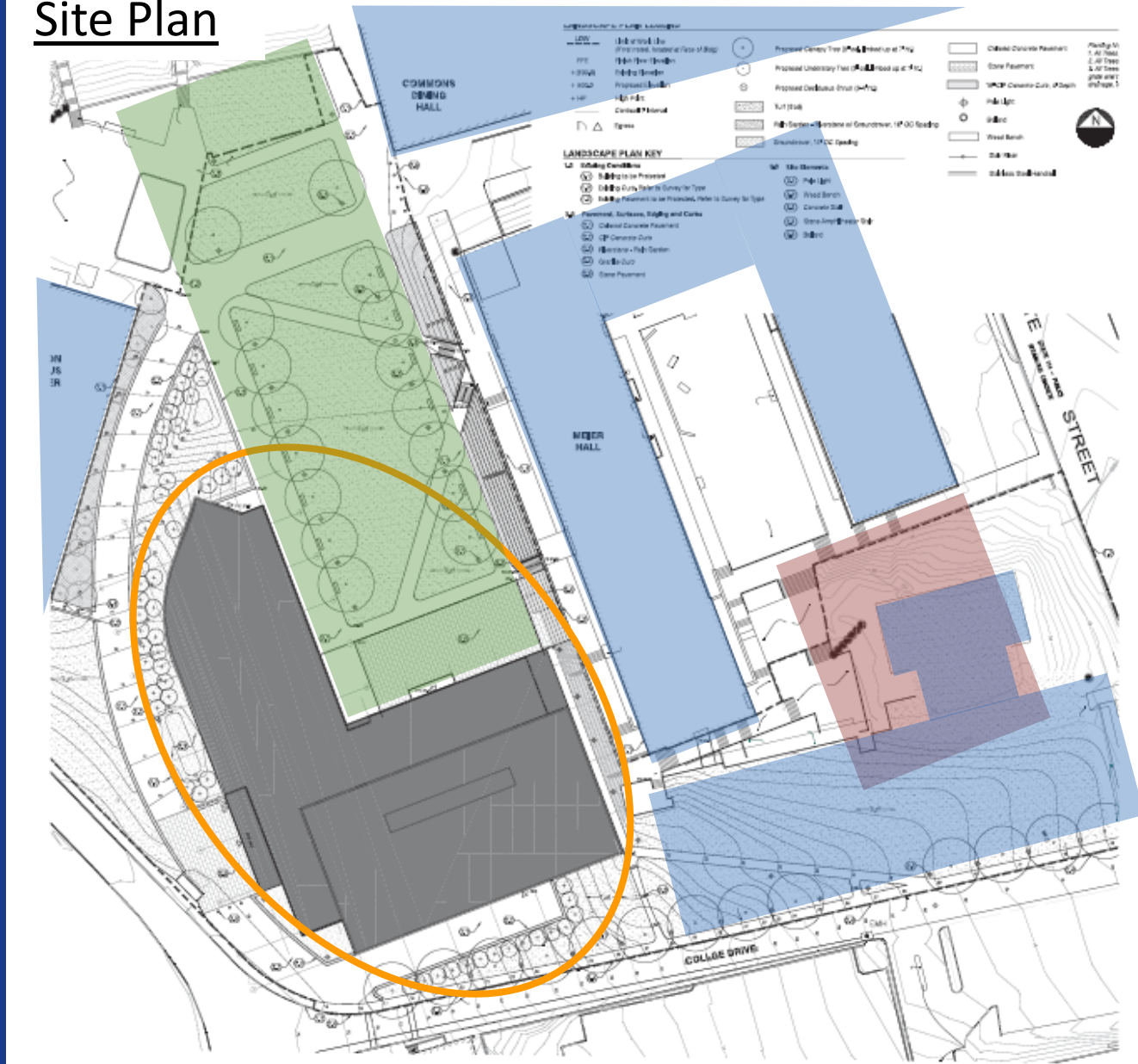
Ellison Campus Center, Veterans Hall
February 22, 2010



Schematic Design Report

Architecture | Planning | Engineering
Shepley Bulfinch

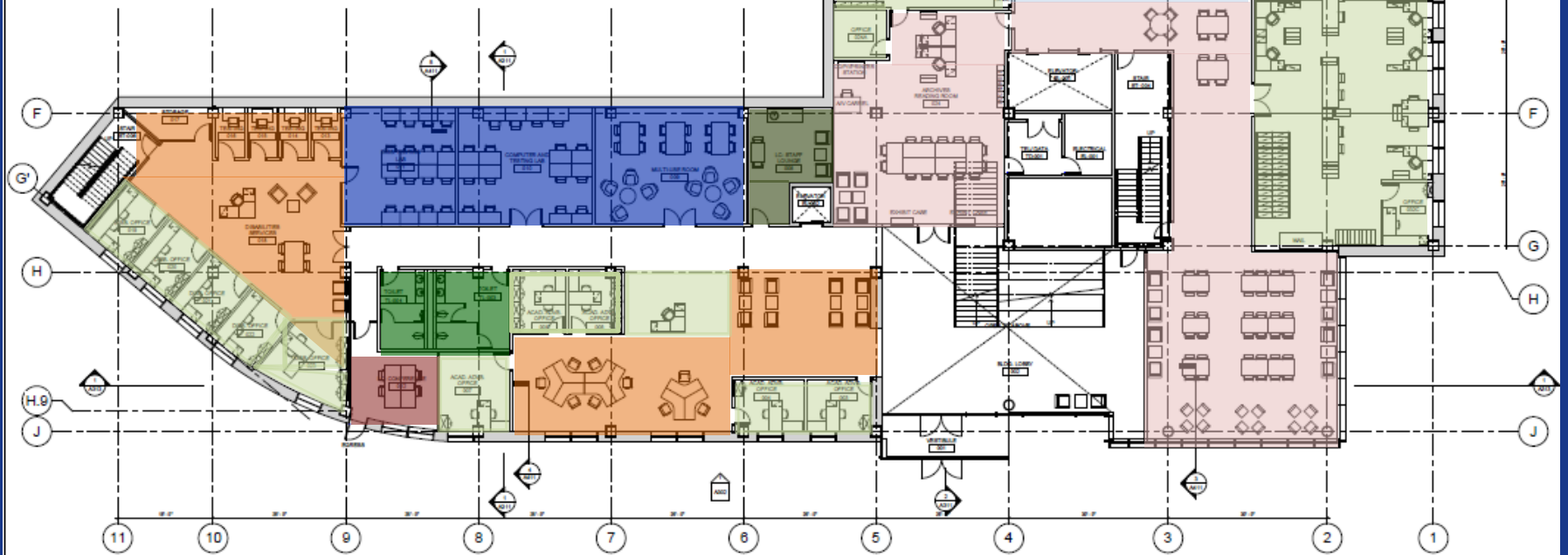
Site Plan



Floor Plans by Level

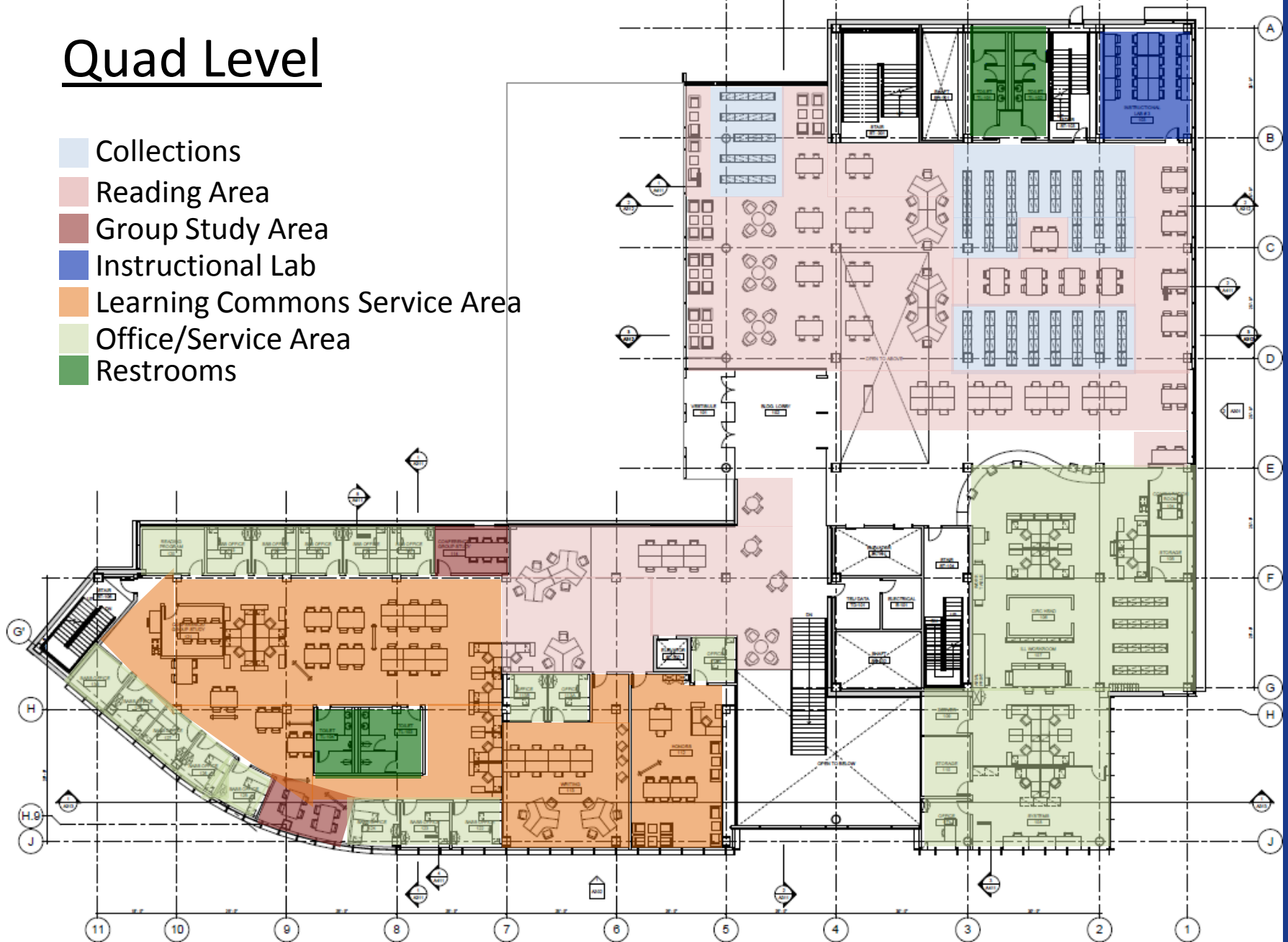
Street Level

- Collections
- Collections - Archives
- Reading Area
- Group Study Area
- Instructional Lab
- Learning Commons Service Area
- Office/Service Area
- Staff Area
- Restrooms



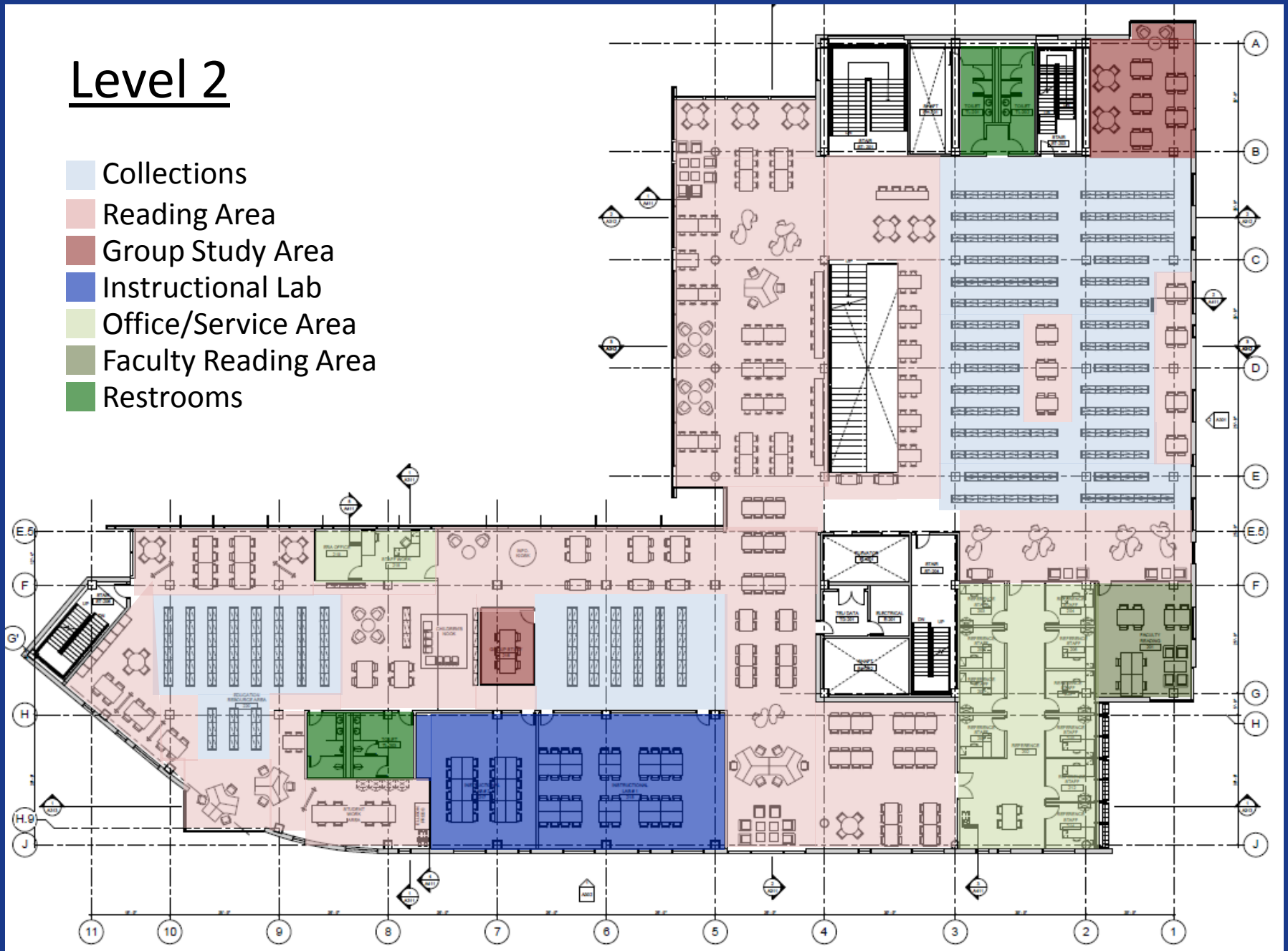
Quad Level

- Collections
- Reading Area
- Group Study Area
- Instructional Lab
- Learning Commons Service Area
- Office/Service Area
- Restrooms



Level 2

- Collections
- Reading Area
- Group Study Area
- Instructional Lab
- Office/Service Area
- Faculty Reading Area
- Restrooms

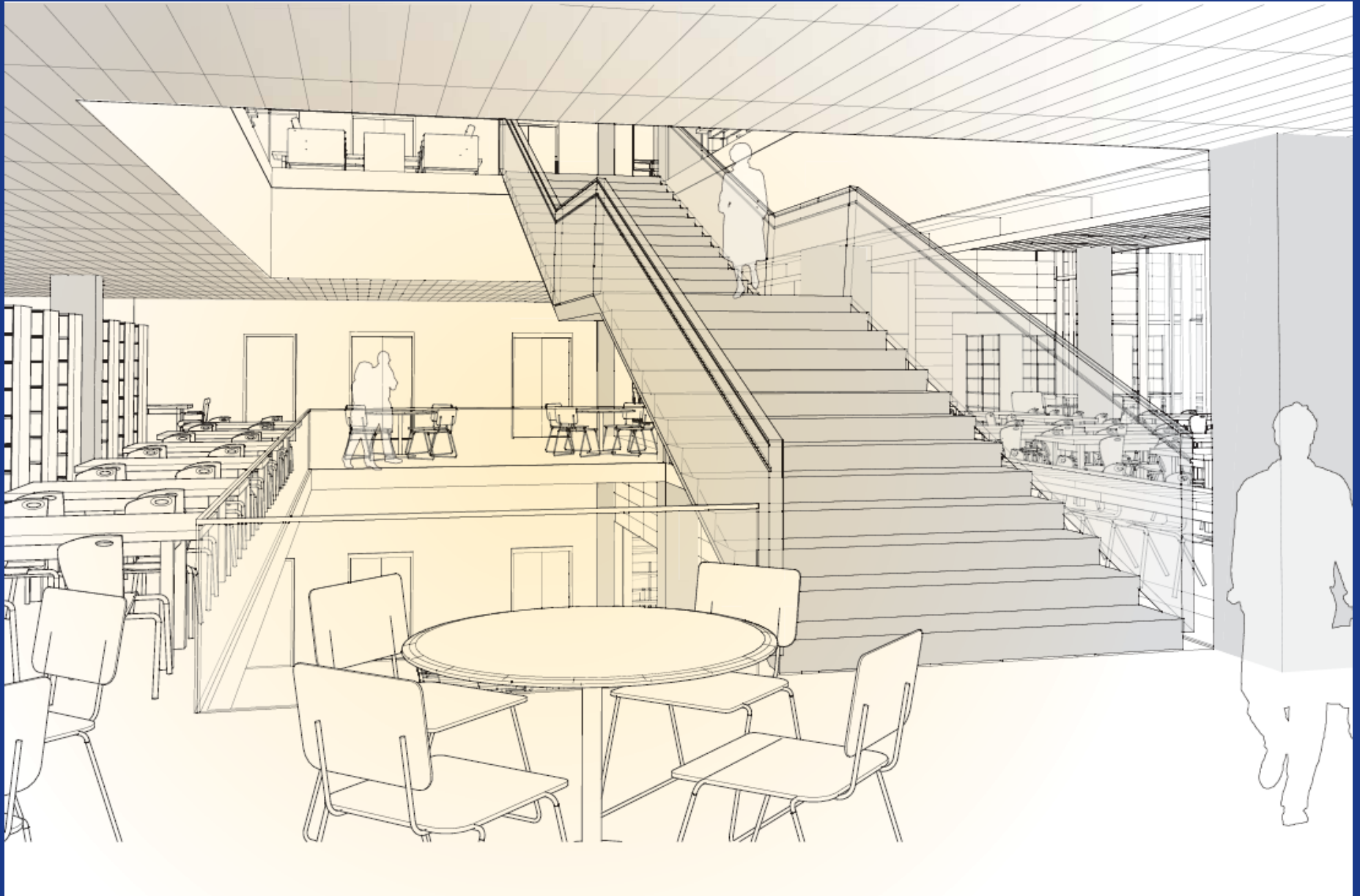


Level 3

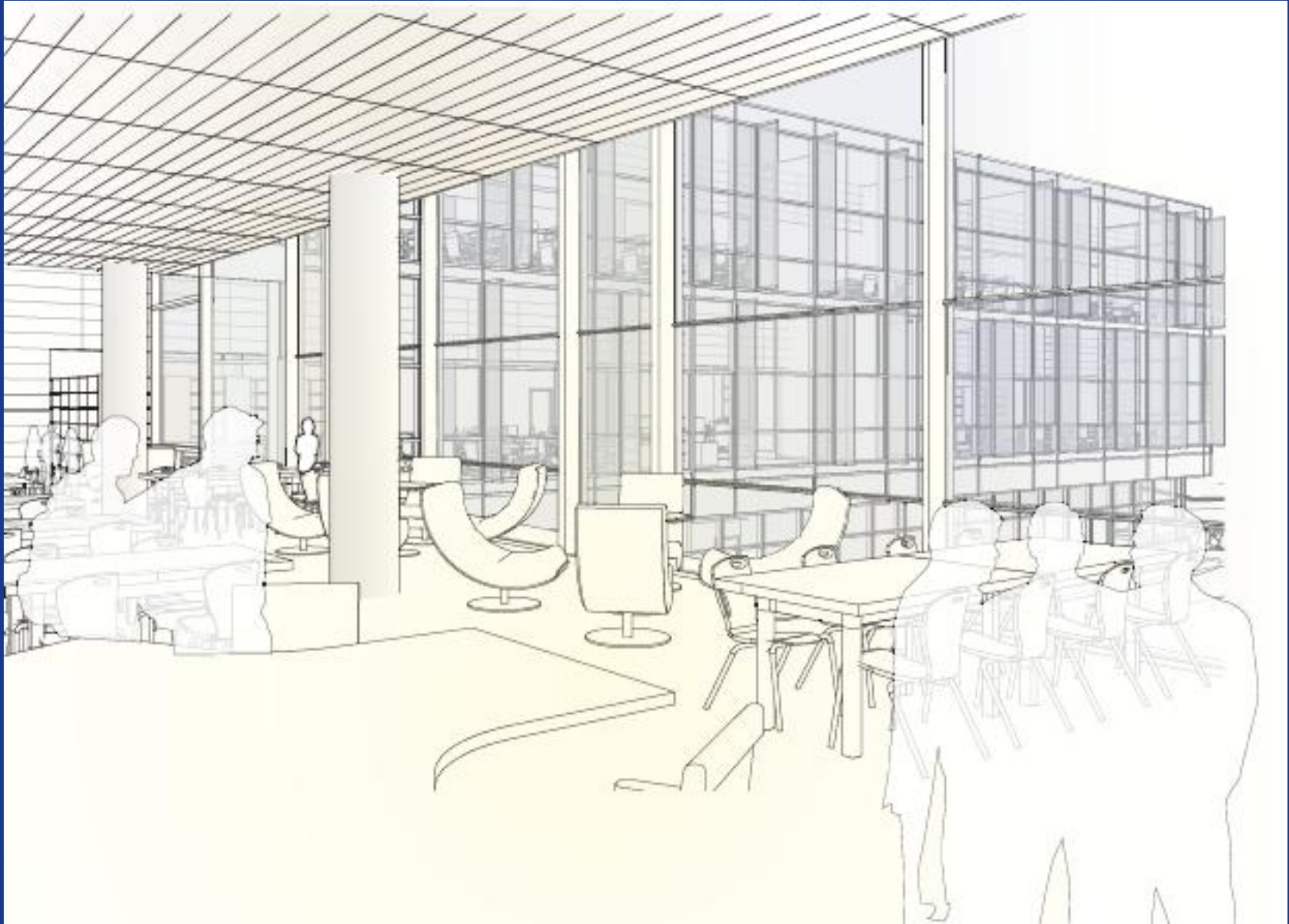
- Collections
- Reading Area
- Group Study Area
- Office/Service Area
- Staff Area
- Restrooms



View from Level 2 looking through atrium at Quad Level below and Level 3 above



View from Quad Level through north windows



Exterior view approaching from Peabody Hall and Parking Lot



Exterior view approaching from Loring Avenue and College Drive



Exterior view approaching main entrance from Quadrangle



Exterior view from across Quadrangle



Next Steps

- Schematic design presentation published on Web site
- Suggestions to Kristin Esterberg (kesterberg@salemstate.edu) and Andrew Soll (asoll@salemstate.edu) for consideration during design development
- DCAM approves schematic design; design development begins
- Meetings of Design Advisory Task Force and Library/Media Development Committee
- Periodic updates to campus and community
- Design development complete by June
- Construction document preparation follows
- Project bidding and construction