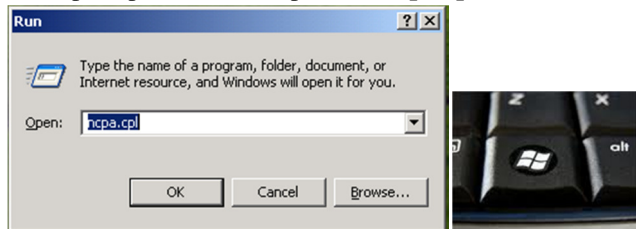
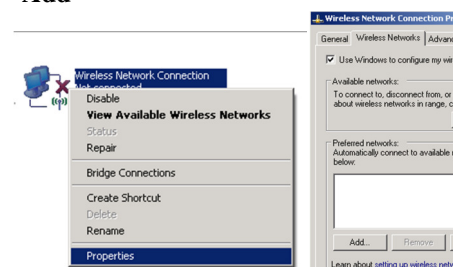


Wireless Setup for Windows XP

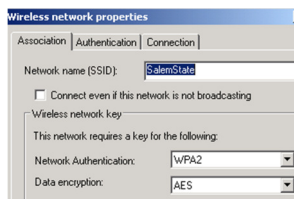
#1 Press the Windows Key and 'R' at the same time
In the prompt that comes up enter "ncpa.cpl"



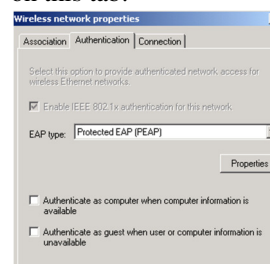
#2 Right click "Wireless Network Connection" and select "Properties". Click on the "Wireless Networks" tab and click "Add"



#3 Enter SalemState as the SSID and select WPA2 and AES for the network authentication and encryption.



#4 Click on the authentication tab and select "Protected EAP (PEAP)" as the EAP Type. Be sure to uncheck both of the boxes on this tab.



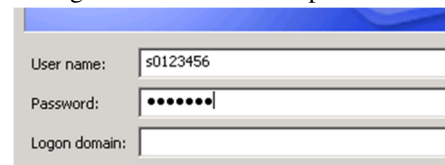
#5 While still on the authentication tab, click the Properties button under the EAP type. Uncheck "Validate server certificate"



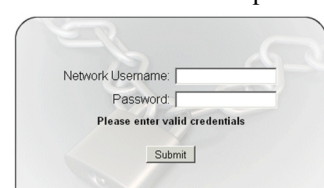
While on this window click "Configure" and uncheck the "When Connecting:" box



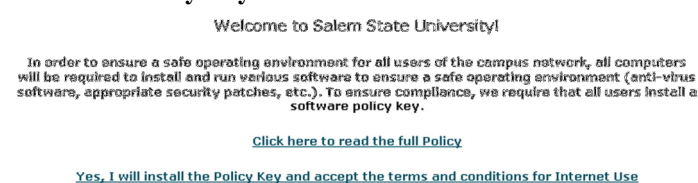
#6 Click on "OK" to confirm and close all the previous dialogs then click on the "Wireless Network Connection" balloon that appears on the lower right hand side of your screen. Enter your network username (S+Student ID) and network password. Leave the login domain blank and press OK.



#7 Your browser should open automatically. If it does not, open your browser and try to navigate to any page. Enter your network username and password again and click "Submit"



#8 If this is your first time connecting to SalemState on your laptop you will be asked to install a policy key. Select "Yes, I will install the Policy Key" to download it



#9 After downloading and running ServiceInstaller.exe select "Install"



#10 You should receive confirmation that SafeConnect has been installed. Press "OK" to close the window.



It may take a few minutes before you can navigate another website.

If you get stuck please make sure you have completed each step properly and have entered the correct credentials. If you still cannot complete setup, contact a lab attendant, the helpdesk or, student support services. Be sure to note at which step you are having trouble.