

MASSACHUSETTS BOARD OF HIGHER EDUCATION
September 2003

Massachusetts
State Colleges
DRAFT
Key Performance
Indicators
Linear Trends

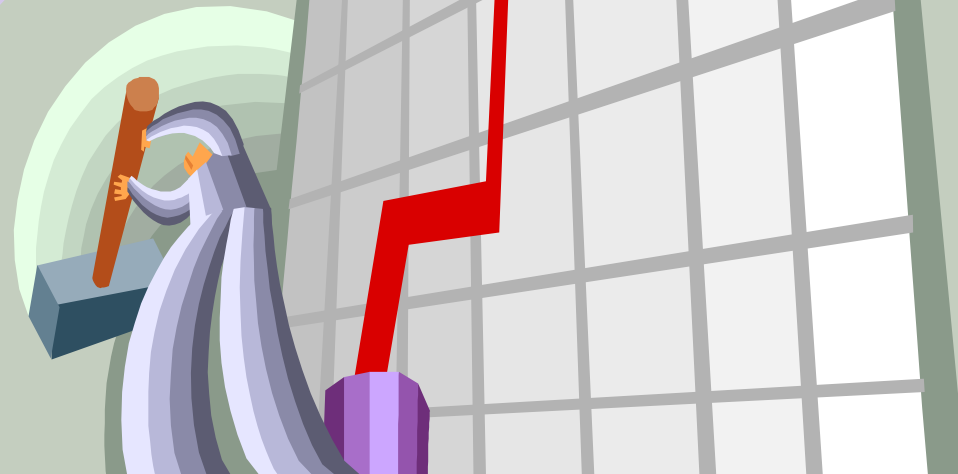


Table of Contents

I.	Introduction	i
II.	Performance Measurement Matrix	iii
	FY 2003 Key Performance Indicators	
III.	Access and Affordability	
	Annual Unduplicated Credit Headcount	AA-1
	Annual FTE Credit Headcount	AA-3
	Fall Unduplicated Credit Headcount	AA-4
	Fall FTE Enrollment	AA-5
	Section Endnotes	AA-7
IV.	Student Access and Success	
	First-Year Retention Rate	SAS-1
	Six-Year Graduation Rate	SAS-4
	Degrees Awarded	SAS-6
	MTEL Pass Rates	SAS-8
	Section Endnotes	SAS-9
V.	Qualified Students	
	Percent of Special Admission Students	QS-1
	Minimum High School Weighted GPA	QS-3
	Section Endnotes	QS-4

VI. Cost Effective Use of Resources

Capital Adaptation and Renewal

CE-1

Institutional Support Costs Compared to Peer Average

CE-2

FY 2004 Key Performance Indicators

VII. Access and Affordability

Tuition and Fees as Percent of State Median Household Income

AA-8

Percent of Total Enrollment Comprised of Minorities

AA-9

VIII. Regional Economic and Workforce Development Needs

Graduates: Positive Workforce Placement and Continuing Education One Year Post Graduation

WD-1

Graduates Continuing Education

WD-3

IX. Cost Effective Use of Resources

Non-Instructional Support Costs

CE-3

X. Higher Education Collaboration

Number of Community College Students Matriculated into Four-Year Colleges Through Joint Admissions

HEC-1

XI. Fundraising

Total Private Funds Received at Both the Institution and the Foundation

FR-1

Total Market Value of Dollars in Endowment

FR-2

Section Endnotes

FR-3

FY 2005 Key Performance Indicators

XII. Cost Effective Use of Resources

Primary Reserve Ratio	CE-4
Return on Net Assets Ratio	CE-5
Net Operating Revenues Ratio	CE-6
Viability Ratio	CE-7

Additional Informational Indicators

XIII. For Use in the Condition of Higher Education

Appendix A FY 1991 – FY 2003 Fall Unduplicated Credit Headcount and Degrees Conferred	CHE-1
Appendix B Retention (Fall to Fall) – First-Year First Time Degree Seeking Students	CHE-3
Appendix C Tuition and Fees at Massachusetts Public Colleges and University	CHE-7
Appendix D Trends in Tuition and Fees	CHE-10
Appendix E Graduate Placement and Graduates Continuing Education	CHE-11
Appendix F Regions of Massachusetts	CHE-19
Appendix G Student Tracking: State Colleges 1996 Cohort	CHE 22

Introduction

The primary driver of effective higher education performance measurement systems is a database that enables time-efficient and reliable linear data trending for planning, policy development, and performance assessment.

To strengthen Massachusetts Public Higher Education's planning and performance accountability system, Board of Higher Education staff has worked closely with campus staff to significantly enhance system capacity to produce timely, more comprehensive, and higher quality data analyses and reports through:

- Implementation of a redesigned Higher Education Information Resource System (HEIRSII)- a data warehouse that enables quality research, analysis, trending, and reporting at the system and institutional level
- Annual preparation of **Key Performance Indicator Linear Trends** for use in performance measurement and the **Condition of Higher Education** report

Key performance indicators linear trend tables and graphs serve as a baseline for advancing a more comprehensive performance measurement system. Trends will be updated and issued annually in June to Board staff, College Presidents and their staff for use in system, segmental, and institutional policymaking, quality improvement planning, and performance measurement. These data will be used by Board staff as part of the annual performance measurement system and for preparing the Condition of Higher Education report.

The following trend book is organized by fiscal year and within each fiscal year by mandated Performance Accountability Objective. Key Performance Indicators reflect a majority of those proposed in FY 2003 by the Board of Higher Education for implementation in FY 2003, FY 2004, and FY 2005. Indicators not included either do not represent data points to be trended (e.g., data quality/meeting reporting deadlines) or are new indicators for which data will be or are currently being collected (e.g., student satisfaction surveys).

In moving forward to improve public higher education's performance measurement system, Board staff will consult with campuses to set target benchmarks for indicators. The next edition of this trend book (June 2004) will incorporate, where appropriate, the benchmark targets defined by the Board in consultation with state and community college Performance Measurement Task Forces.

As key performance indicators are refined, new ones developed, and outcome measures established/redefined, Board staff will update this publication to include linear trends for new indicators as well as modify or delete others as changes are made during the evolution of the Performance Measurement System.

All data presented in the trend book reflect the most current information available. There are, however, a few indicators (e.g., annual enrollment data) where current data will not be available until August of each year. Once available, Board staff will reissue the relevant updated table page(s).

Fiscal data presents the prior fiscal year as most current- a standard practice in all state higher education performance accountability systems. This “year in arrears” is necessary. Data must reflect fiscal year close out information reported in annual audited Financial Statements and IPEDS finance surveys. Fiscal close out information is not collected and reported until well into the next fiscal year.

Finally, all data used in the tables has been provided (and signed off) by the institutions through standard data collection formats e.g., federal IPEDS, HEIRS II data warehouse, and standard BHE fiscal collection surveys/templates. Peer data when cited has been downloaded through the IPEDS system. All data sources are clearly identified on each table.

STATE COLLEGES REVISED PERFORMANCE MEASUREMENT

Strategic Goal: Accessibility/Affordability

Ensure accessibility for all residents of the Commonwealth to affordable higher education learning opportunities.

Deliverable	Performance Metric
Student share of cost of education reasonable in relation to ability to pay	1) Total student charges as benchmarked % of state median household income (Only applicable if current tuition and fee setting policies remain in effect. If new tuition policy approved, this measure will be incorporated into the board policy for setting tuition ranges) (FY04 and forward)
Volume served/market share	2) Annualized unduplicated credit enrollment (headcount and FTE, undergraduate and graduate) (FY03 and forward)
Volume served/market share	3) Fall unduplicated credit enrollment (headcount and FTE, undergraduate and graduate) (FY03 and forward)
Access for diversified populations	4) % total enrollment comprised of minorities benchmarked to % representation of minorities in region (FY04 and forward)
	5) Annual \$ revenue generated from fees related to annual \$ revenues from state appropriations (FY04 and forward)
Students in need of financial assistance receive assistance	6) % Students in need of aid who receive aid (Only applicable if current tuition and fee policies remain in effect. If new tuition retention policy approved, this measure will be applied to the Board and to the State i.e., measure effectiveness of State in providing adequate aid) (FY04 and forward)

Strategic Goal: Student Access and Success

Improve student achievement and facilitate successful attainment of their educational goals.

Deliverable	Performance Metric
Students successfully persist to attain educational goal	7) % First-year retention rate (first-time full-time degree-seeking freshmen cohort) (FY03 and forward)
Degree seeking students successfully complete	8) % 6-year graduation rate (first-time full-time degree-seeking freshmen cohort) (FY03 and forward)
Produce credentialed undergraduate and graduate completers for entry into Commonwealth's workforce	9) # of annual degrees and certificates awarded (also a workforce development indicator); number of awards in identified regional high demand labor market fields) (FY03 and forward)
Produce qualified teachers to	10) Pass rate on MTEL, Massachusetts Test for Educator Licensure (FY03 and forward)

meet need of Commonwealth's teacher shortage	11) # of teacher prep students graduating and passing the certification test each year (Requires field added to HEIRS II and data output from DOE) (FY05 and forward)
Strategic Goal: Qualified Students <i>Recruit and enroll qualified students</i>	
Deliverable	Performance Metric
Only accept and enroll qualified students capable of succeeding	12) Percentage of special admission students (FY03 and forward)
"	13) Minimum high school weighted grade point average (all category 1 and 4 students) (FY03 and forward)
Strategic Goal: Meet Regional Economic and Workforce Development Needs	
Deliverable	Performance Metric
Graduates are successfully placed in the workforce or graduate school	14) Positive workforce placement and/or graduate program placement 1-year after graduation (General placements and placement in high need fields e.g. , education; math and science) (BHE PAS system and statewide NSC contract) (FY04 and forward)

Strategic Goal: Cost Effective Use of Resources	
<i>Ensure sound fiscal management and cost-effective use of resources</i>	
Deliverable	Performance Metric
Physical resources managed/maintained effectively	15) % of operating revenues allocated to capital adaptation and renewal (FY03 and forward)
Public funds spent on institutional/administrative costs are reasonable	16) % E&G for institutional support costs (FY03 only) 16) % E&G for non-instructional support costs (FY04 and forward)
Colleges manage funds efficiently and effectively and are fiscally stable	17) Independent financial audit and financial aid audit (FY03 and forward) 18) Financial Ratios - Primary reserve ratio (Recommended by KPMG) (FY05 and forward) - Return on net assets ratio (Recommended by KPMG) (FY05 and forward) - Net operating revenues ratio (Recommended by KPMG) (FY05 and forward) - Viability ratio (Recommended by KPMG) (FY05 and forward)
Strategic Goal: Higher Education Collaboration	
<i>Promote collaboration among the campuses and with the private higher education sector</i>	
Deliverable	Performance Metric
State colleges provide seamless avenues for community college students to pursue a 4 year degree	19) # Joint admissions degree programs with community colleges (FY04 and forward)
Community college students readily access four-year higher education in the four-year public sector.	20) # community college students matriculated into four year colleges through joint admissions and articulation agreements (FY04 and forward)
Colleges readily collaborate within regions to reduce costs through shared services	21) # of shared service and cost sharing efforts (FY04 and forward)
Strategic Goal: K-12 Collaboration – Fully collaborate and support K-12 programs	
Deliverable	Performance Metric
State colleges substantively partner with K-12 in service region to support educational improvement.	Annual narrative report documenting work/outcomes with pre-K-12 to assist students with successful performance on MCAS exams and to provide education-related services in service area (FY03 and forward)

Strategic Goal: Fundraising – Encourage entrepreneurship and maximize fundraising from private sources

Deliverable	Performance Metric
Colleges actively seek and obtain alternative non-state sources of funding to subsidize operations.	22) Total private funds received (both the institution and the foundation) (FY04 and forward)
“	23) Total dollars in endowment (FY04 and forward)

Strategic Goal: Provide high quality learning opportunities

Deliverable	Performance Metric
Colleges actively review curriculum to ensure relevancy and responsiveness to needs of students and the Commonwealth	Documented program review process and cycle for review (FY04 and forward)
Students’ satisfaction with the quality of their learning experience	24) % currently enrolled students satisfied with quality of learning experience (FY05 and forward) 25) % graduates working fulltime satisfied with quality of preparation for workforce (FY05 and forward) 26) % students in graduate programs satisfied with quality of academic preparation at graduate level (FY05 and forward) (#24-26 require BHE sponsored survey development.)

Strategic Goal: Quality Data Reporting

Deliverable	Performance Metric
Information reported to the public and BHE for use in planning, policy development, performance measurement is timely, accurate and consistent	27) Institution met all BHE reporting deadlines (FY03 and forward) 28) Institution’s reported data are consistent and reliable (FY03 and forward)



FY 2003 Key Performance Indicators



Performance Accountability Objective Access and Affordability

- Annual Unduplicated Credit Headcount
- Annual FTE Enrollment
- Fall Unduplicated Credit Headcount
- Fall FTE Enrollment

Annual Unduplicated Credit Headcount

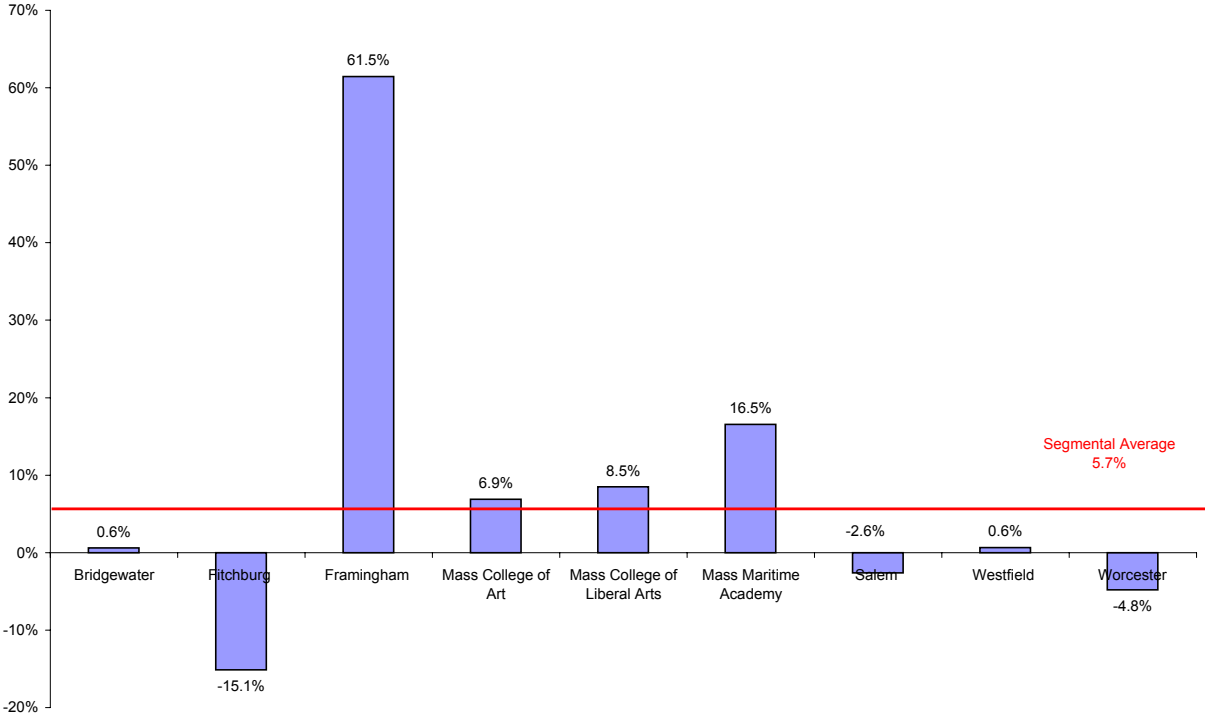
	Enrollment Level	1991 - 1992	1992 - 1993	1993 - 1994	1994 - 1995	1995 - 1996	1996 - 1997	1997 - 1998	1998 - 1999	1999 - 2000	2000 - 2001	2001 - 2002	# and % Change 1996 -1997 to 2001 - 2002	
													#	%
Bridgewater*	Undergraduate	8,296	8,472	8,501	6,862	9,705	8,589	10,296	8,819	8,441	8,567	8,641	52	0.6%
	Graduate	2,633	2,367	2,404	1,304	1,128	1,807	1,371	3,126	3,112	3,112	3,361	1,554	86.0%
	Total	10,929	10,839	10,905	8,166	10,833	10,396	11,667	11,945	11,553	11,679	12,002	1,606	15.4%
Fitchburg	Undergraduate	6,019	5,733	5,438	5,372	5,068	4,904	4,521	4,494	4,205	4,116	4,163	-741	-15.1%
	Graduate	3,157	3,619	4,691	6,256	6,576	6,667	7,299	7,405	7,899	9,225	9,486	2,819	42.3%
	Total	9,176	9,352	10,129	11,628	11,644	11,571	11,820	11,899	12,104	13,341	13,649	2,078	18.0%
Framingham	Undergraduate	7,042	7,118	6,860	7,014	6,166	5,429	6,111	7,465	7,903	9,089	8,766	3,337	61.5%
	Graduate	784	842	414	837	612	664	1,377	1,746	1,797	1,845	2,063	1,399	210.7%
	Total	7,826	7,960	7,274	7,851	6,778	6,093	7,488	9,211	9,700	10,934	10,829	4,736	77.7%
Mass College of Art	Undergraduate	2,051	3,009	2,542	3,083	2,881	3,182	2,304	3,253	3,278	3,665	3,401	219	6.9%
	Graduate	144	84	100	125	126	134	206	121	131	293	217	83	61.9%
	Total	2,195	3,093	2,642	3,208	3,007	3,316	2,510	3,374	3,409	3,958	3,618	302	9.1%
Mass College of Liberal Arts	Undergraduate	2,280	2,450	2,319	1,764	2,022	1,603	1,942	1,852	1,709	1,669	1,739	136	8.5%
	Graduate	561	456	389	208	537	429	405	483	527	711	820	391	91.1%
	Total	2,841	2,906	2,708	1,972	2,559	2,032	2,347	2,335	2,236	2,380	2,559	527	25.9%
Mass Maritime Academy	Undergraduate	685	771	760	773	822	768	787	886	845	889	895	127	16.5%
	Graduate	0	0	0	0	0	0	0	0	0	0	0	0	0.0%
	Total	685	771	760	773	822	768	787	886	845	889	895	127	16.5%
Salem	Undergraduate	12,298	12,453	9,032	11,600	10,392	8,817	9,722	10,079	8,447	8,457	8,588	-229	-2.6%
	Graduate	2,645	2,708	1,011	3,079	2,003	2,933	4,058	5,439	3,824	3,827	6,571	3,638	124.0%
	Total	14,943	15,161	10,043	14,679	12,395	11,750	13,780	15,518	12,271	12,284	15,159	3,409	29.0%
Westfield	Undergraduate	5,465	5,468	5,078	4,931	4,792	4,966	4,878	4,815	4,946	4,927	4,998	32	0.6%
	Graduate	1,391	1,368	1,268	1,297	1,329	1,360	1,232	1,268	1,189	1,222	1,414	54	4.0%
	Total	6,856	6,836	6,346	6,228	6,121	6,326	6,110	6,083	6,135	6,149	6,412	86	1.4%
Worcester	Undergraduate	7,670	6,979	7,308	7,208	7,082	6,955	6,798	6,566	6,258	6,568	6,620	-335	-4.8%
	Graduate	1,094	1,276	1,428	1,348	1,799	1,214	1,924	1,845	2,033	2,331	2,312	1,098	90.4%
	Total	8,764	8,255	8,736	8,556	8,881	8,169	8,722	8,411	8,291	8,899	8,932	763	9.3%
State Colleges	Undergraduate	51,806	52,453	47,838	48,607	48,930	45,213	47,359	48,229	46,032	47,947	47,811	2,598	5.7%
	Graduate	12,409	12,720	11,705	14,454	14,110	15,208	17,872	21,433	20,512	22,566	26,244	11,036	72.6%
	Total	64,215	65,173	59,543	63,061	63,040	60,421	65,231	69,662	66,544	70,513	74,055	13,634	22.6%

Source: IPEDS Institutional Characteristics (1996-1997 to 1998-1999), Enrollment Survey (1999-2000 to 2001-2002)

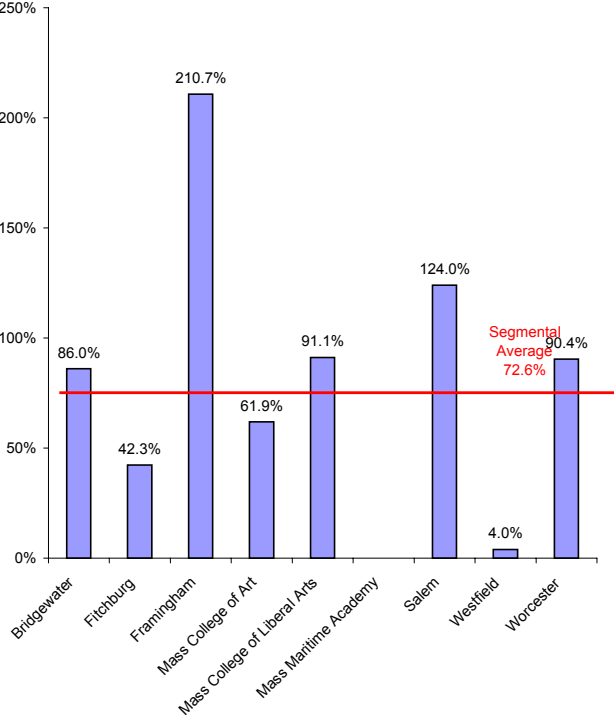
* 1996-1997 data for Bridgewater State College was updated by the college to also include non-degree seeking students who were not included when the data were submitted to IPEDS.

Annual Unduplicated Credit Headcount

Percent Change in Undergraduate Students 1996-1997 to 2001-2002



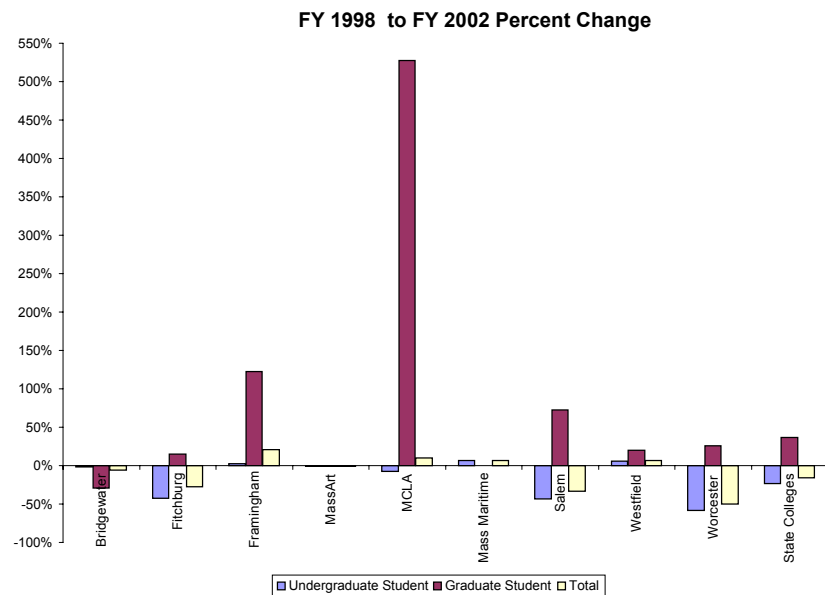
Percent Change in Graduate Students 1996-1997 to 2001-2002



Annual FTE Enrollment

	Enrollment Level	Enrollment					Change FY 1998 to FY 2002	
		FY 1998	FY 1999	FY 2000	FY 2001	FY 2002	#	%
Bridgewater*	Undergraduate	6,233	6,091	5,924	5,892	6,108	-125	-2.0%
	Graduate	921	1,049	654	650	654	-267	-28.9%
	Total	7,154	7,140	6,578	6,542	6,762	-391	-5.5%
Fitchburg	Undergraduate	4,521	4,494	2,631	2,565	2,588	-1,933	-42.8%
	Graduate	1,621	1,585	1,603	1,987	1,860	239	14.7%
	Total	6,142	6,079	4,234	4,552	4,448	-1,694	-27.6%
Framingham	Undergraduate	3,452	6,083	3,493	3,399	3,543	91	2.6%
	Graduate	624	637	1,596	1,534	1,388	764	122.4%
	Total	4,076	6,720	5,089	4,933	4,931	855	21.0%
Mass College of Art	Undergraduate	1,557	1,542	1,581	1,528	1,546	-11	-0.7%
	Graduate	110	90	80	100	109	-1	-1.1%
	Total	1,667	1,632	1,661	1,628	1,655	-12	-0.7%
Mass College of Liberal Arts	Undergraduate	1,357	1,339	1,247	1,243	1,257	-100	-7.4%
	Graduate	45	53	161	210	282	237	527.7%
	Total	1,402	1,392	1,408	1,453	1,539	137	9.8%
Mass Maritime Academy	Undergraduate	958	888	905	1,021	1,024	66	6.9%
	Graduate	0	0	0	0	0	0	
	Total	958	888	905	1,021	1,024	66	6.9%
Salem	Undergraduate	9,333	9,904	5,527	5,323	5,299	-4,034	-43.2%
	Graduate	905	842	1,060	1,024	1,564	659	72.8%
	Total	10,238	10,746	6,587	6,347	6,863	-3,375	-33.0%
Westfield	Undergraduate	3,689	4,424	3,733	3,758	3,908	219	5.9%
	Graduate	274	262	264	273	328	54	19.9%
	Total	3,963	4,686	3,997	4,031	4,236	273	6.9%
Worcester	Undergraduate	4,223	3,490	3,421	3,651	1,771	-2,452	-58.1%
	Graduate	442	463	542	603	557	115	26.0%
	Total	4,665	3,953	3,963	4,254	2,328	-2,338	-50.1%
State Colleges	Undergraduate	35,323	38,255	28,462	28,380	27,042	-8,280	-23.4%
	Graduate	4,942	4,981	5,960	6,382	6,743	1,801	36.4%
	Total	40,265	43,236	34,422	34,761	33,785	-6,479	-16.1%

Source IPEDS Enrollment Survey

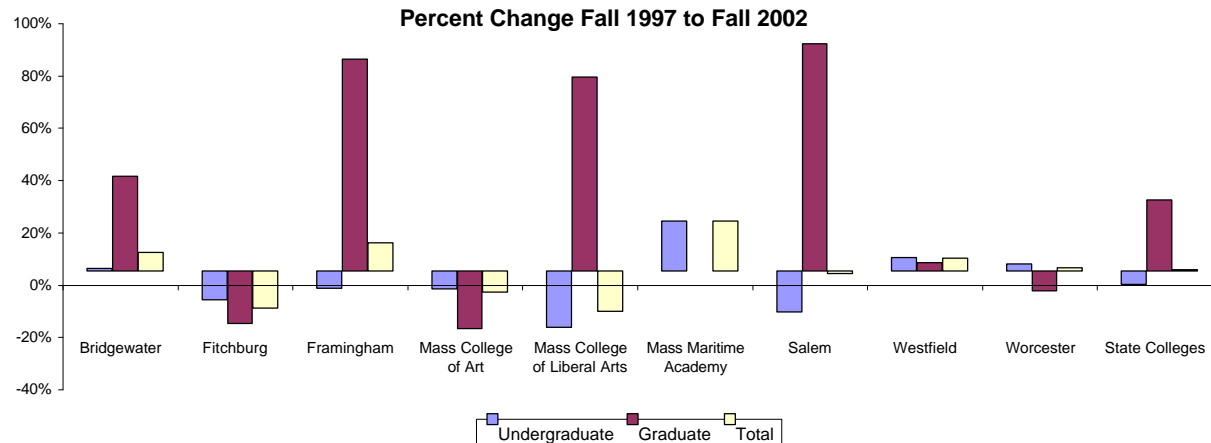


Fall Unduplicated Credit Headcount

	Enrollment Level	Fall 1997	Fall 1998	Fall 1999	Fall 2000	Fall 2001	Fall 2002	# Change	% Change
								Fall 1997 to Fall 2002	Fall 1997 to Fall 2002
Bridgewater	Undergraduate	7,364	7,320	7,157	7,080	7,199	7,434	70	1.0%
	Graduate	1,562	1,841	1,798	1,759	1,839	2,127	565	36.2%
	Total	8,926	9,161	8,955	8,839	9,038	9,561	635	7.1%
Fitchburg	Undergraduate	3,797	3,660	3,356	3,240	3,219	3,379	-418	-11.0%
	Graduate	2,090	2,756	2,219	2,480	1,814	1,670	-420	-20.1%
	Total	5,887	6,416	5,575	5,720	5,033	5,049	-838	-14.2%
Framingham*	Undergraduate	4,261	4,390	3,988	4,042	4,043	3,978	-283	-6.6%
	Graduate	1,054	1,295	1,401	1,721	1,872	1,906	852	80.8%
	Total	5,315	5,685	5,389	5,763	5,915	5,884	569	10.7%
Mass College of Art	Undergraduate	2,078	2,199	2,163	2,217	2,146	1,934	-144	-6.9%
	Graduate	189	102	191	107	110	147	-42	-22.2%
	Total	2,267	2,301	2,354	2,324	2,256	2,081	-186	-8.2%
Mass College of Liberal Arts	Undergraduate	1,860	1,603	1,404	1,392	1,402	1,457	-403	-21.7%
	Graduate	127	146	128	202	212	221	94	74.0%
	Total	1,987	1,749	1,532	1,594	1,614	1,678	-309	-15.6%
Mass Maritime Academy	Undergraduate	746	784	802	829	853	888	142	19.0%
	Graduate	0	0	0	0	0	0	0	0%
	Total	746	784	802	829	853	888	142	19.0%
Salem	Undergraduate	7,607	7,259	6,833	6,384	6,318	6,410	-1,197	-15.7%
	Graduate	1,275	1,418	1,240	2,200	2,031	2,380	1,105	86.7%
	Total	8,882	8,677	8,073	8,584	8,349	8,790	-92	-1.0%
Westfield	Undergraduate	4,199	4,203	4,304	4,288	4,378	4,412	213	5.1%
	Graduate	750	775	712	731	775	773	23	3.1%
	Total	4,949	4,978	5,016	5,019	5,153	5,185	236	4.8%
Worcester	Undergraduate	4,735	4,592	4,495	4,600	4,954	4,856	121	2.6%
	Graduate	772	738	755	735	853	712	-60	-7.8%
	Total	5,507	5,330	5,250	5,335	5,807	5,568	61	1.1%
State College Total	Undergraduate	36,647	36,010	34,502	34,072	34,512	34,748	-1,899	-5.2%
	Graduate	7,819	9,071	8,444	9,935	9,506	9,936	2,117	27.1%
	Total	44,466	45,081	42,946	44,007	44,018	44,684	218	0.5%

Source: HEIRS II Student File

* Framingham State College Fall 1997 to Fall 2000 figures are from the BHE Early Enrollment Report.



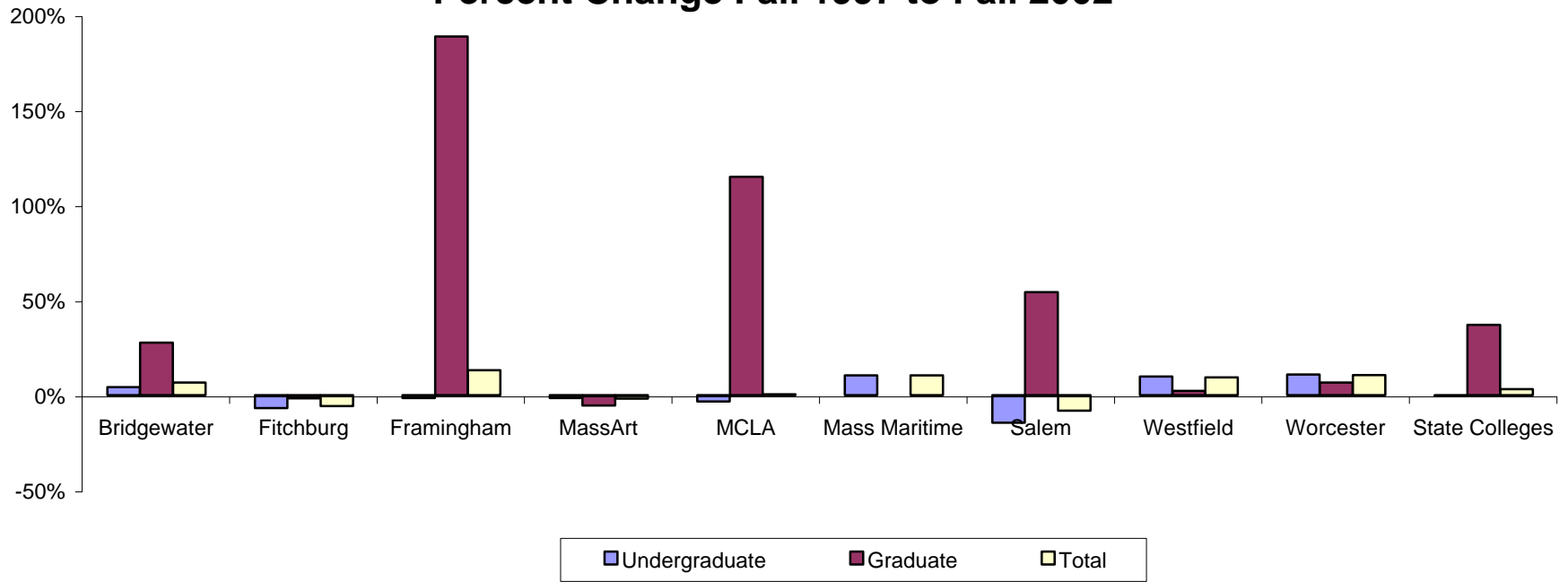
Fall FTE Enrollment

	Enrollment Level	Fall 1997	Fall 1998	Fall 1999	Fall 2000	Fall 2001	Fall 2002	# Change	% Change
								Fall 1997 to Fall 2002	Fall 1997 to Fall 2002
Bridgewater	Undergraduate	5,861.8	5,761.7	5,666.1	5,642.6	5,796.9	6,103.5	241.7	4.1%
	Graduate	674.7	771.3	751.5	685.9	720.8	861.3	186.6	27.7%
	Total	6,536.5	6,533.0	6,417.6	6,328.5	6,517.7	6,964.8	428.3	6.6%
Fitchburg	Undergraduate	2,798.1	2,744.0	2,494.8	2,444.8	2,444.3	2,606.8	-191.3	-6.8%
	Graduate	716.0	896.7	764.3	878.3	664.4	704.2	-11.8	-1.6%
	Total	3,514.1	3,640.7	3,259.1	3,323.1	3,108.7	3,311.0	-203.1	-5.8%
Framingham*	Undergraduate	3,443.0	3,663.0	3,259.0	3,291.0	3,358.6	3,390.9	-52.1	-1.5%
	Graduate	287.0	533.0	677.0	819.0	771.4	828.3	541.3	188.6%
	Total	3,730.0	4,196.0	3,936.0	4,110.0	4,130.0	4,219.2	489.2	13.1%
Mass College of Art	Undergraduate	1,439.0	1,477.5	1,473.6	1,492.0	1,444.7	1,417.2	-21.8	-1.5%
	Graduate	129.0	86.5	130.4	94.0	99.8	122.0	-7.0	-5.4%
	Total	1,568.0	1,564.0	1,604.0	1,586.0	1,544.5	1,539.2	-28.8	-1.8%
Mass College of Liberal Arts	Undergraduate	1,317.5	1,286.2	1,229.8	1,197.6	1,210.4	1,273.3	-44.2	-3.4%
	Graduate	43.1	57.7	42.9	78.2	84.2	92.6	49.5	114.8%
	Total	1,360.6	1,343.9	1,272.7	1,275.8	1,294.6	1,365.9	5.3	0.4%
Mass Maritime Academy	Undergraduate	863.3	901.4	888.1	868.8	944.3	952.8	89.5	10.4%
	Graduate	0.0	0.0	0.0	0.0	0.0	0.0	0.0	
	Total	863.3	901.4	888.1	868.8	944.3	952.8	89.5	10.4%
Salem	Undergraduate	5,793.6	5,514.8	5,113.7	4,817.9	4,803.6	4,955.6	-838.0	-14.5%
	Graduate	576.1	615.3	552.5	777.2	759.1	888.2	312.1	54.2%
	Total	6,369.7	6,130.1	5,666.2	5,595.1	5,562.7	5,843.8	-525.9	-8.3%
Westfield	Undergraduate	3,552.9	3,594.1	3,714.5	3,712.4	3,828.0	3,902.1	349.2	9.8%
	Graduate	277.8	293.7	263.7	259.6	297.0	283.8	6.0	2.2%
	Total	3,830.7	3,887.8	3,978.2	3,972.0	4,125.0	4,185.9	355.2	9.3%
Worcester	Undergraduate	3,220.0	3,214.0	3,170.3	3,323.4	3,619.7	3,570.2	350.2	10.9%
	Graduate	258.7	261.4	267.2	268.2	312.6	275.7	17.0	6.6%
	Total	3,478.7	3,475.4	3,437.5	3,591.6	3,932.3	3,845.9	367.2	10.6%
State College Total	Undergraduate	28,289.2	28,156.7	27,009.9	26,790.5	27,450.5	28,172.4	-116.8	-0.4%
	Graduate	2,962.4	3,515.6	3,449.5	3,860.4	3,709.3	4,056.1	1,093.7	36.9%
	Total	31,251.6	31,672.3	30,459.4	30,650.9	31,159.8	32,228.5	976.9	3.1%

Source: HEIRS II Student File

* Framingham State College Fall 1997 to Fall 2000 figures are from the BHE Early Enrollment Report.

Percent Change Fall 1997 to Fall 2002



Performance Accountability Objective: Access & Affordability

Annual FTE Enrollment Worcester In the “Annual FTE Enrollment” table the FY 2002 FTE numbers for undergraduate student (1,771), graduate student (557), and total (2,328) FTEs are Fall semester only, rather than annual. The correct annual FTE enrollment numbers that should be in the table are as follows:

Undergraduate	3,955
Graduate	456
Total	4,411

Annual Unduplicated Credit Headcount Mass Art 1997-1998: The graduate count (206) is wrong; the figure was copied from the wrong column in the IPEDS source report. The correct count was 138. 2000-2001: The graduate count of 293 is the number that we reported to IPEDS, but on further inspection it did not look right. This was the first year of our Colleague conversion, and the way that we identified graduate students changed. Non-matriculated students enrolled in courses for graduate credit are now included, where previous counts were limited to degree students only. So while there was a significant increase in 2000-2001, the count was probably closer to the 2001-2002 number (216), which we believe is correct. The IR staff did spot checks on the student records that were included in the 293 count; while most were graduate level, there were a significant number whose program levels had converted incorrectly. Beginning in 2000-2001, annualized counts include students taking course for credit at our Art New England summer program in Vermont; this program may have had more of an impact on graduate enrollments than on undergraduate figures.

Fall Unduplicated Credit Headcount Mass Art The registration level field in HEIRS files for 1997 and 1999 was coded incorrectly as ‘graduate’ for students in the MassArt graphic design certificate program, which is an undergraduate program. So while the annual totals are correct, both the headcount and FTE figures reported have the wrong breakdown between undergraduate and graduate enrollment.”

<i>Fall Unduplicated Credit Headcount Enrollment</i>	<i>1997</i>	<i>1999</i>
Undergraduate	2180	2266
Graduate	110	107
Total	2290	2373

Source: Early Enrollment Report

Fall FTE Enrollment Mass Art The registration level field in HEIRS files for 1997 and 1999 was coded incorrectly as ‘graduate’ for students in the Mass Art graphic design certificate program, which is an undergraduate program. So while the annual totals are correct, both the headcount and FTE figures reported have the wrong breakdown between undergraduate and graduate enrollment.”

<i>Fall FTE Enrollment</i>	<i>1997</i>	<i>1999</i>
Undergraduate	14791	1522
Graduate	101	96
Total	1580	1618

Source: Early Enrollment Report



Performance Accountability Objective Student Access and Success

- First Year Retention Rate
- Six-year Graduation Rate
- Number of Annual Degrees and Certificates Awarded
- Pass Rate on Massachusetts Test for Educator Licensure

**First Year Retention (Fall to Fall)
First-Time Degree Seeking Students**

	Enrollment Status	Fall 1996 Cohort	Fall 1997 Cohort	Fall 1998 Cohort	Fall 1999 Cohort	Fall 2000 Cohort	Fall 2001 Cohort	Fall 1996 to Fall 2001 Percentage Point Change
Bridgewater	Full-time First-time Degree Seeking Students*	1,147	1,159	1,127	1,075	1,242	1,138	
	# Returning to Same Institution	821	819	837	747	914	838	
	% Returning to Same Institution	71.6%	70.7%	74.3%	69.5%	73.6%	73.6%	2.1%
	Part-time First-time Degree Seeking Students	29	21	49	38	35	32	
	# Returning to Same Institution	10	5	31	16	13	14	
	% Returning to Same Institution	34.5%	23.8%	63.3%	42.1%	37.1%	43.8%	9.3%
	Total First-time Degree Seeking Students	1,176	1,180	1,176	1,113	1,277	1,170	
# Returning to Same Institution	831	824	868	763	927	852		
% Returning to Same Institution	70.7%	69.8%	73.8%	68.6%	72.6%	72.8%	2.2%	
Fitchburg	Full-time First-time Degree Seeking Students*	455	503	497	344	448	405	
	# Returning to Same Institution	309	368	349	263	337	288	
	% Returning to Same Institution	67.9%	73.2%	70.2%	76.5%	75.2%	71.1%	3.2%
	Part-time First-time Degree Seeking Students	7	3	6	57	9	26	
	# Returning to Same Institution	5	2	3	40	6	17	
	% Returning to Same Institution	71.4%	66.7%	50.0%	70.2%	66.7%	65.4%	-6.0%
	Total First-time Degree Seeking Students	462	506	503	401	457	431	
# Returning to Same Institution	314	370	352	303	343	305		
% Returning to Same Institution	68.0%	73.1%	70.0%	75.6%	75.1%	70.8%	2.8%	
Framingham	Full-time First-time Degree Seeking Students*	616	562	573	540	589	647	
	# Returning to Same Institution	394	378	400	370	427	441	
	% Returning to Same Institution	64.0%	67.3%	69.8%	68.5%	72.5%	68.2%	4.2%
	Part-time First-time Degree Seeking Students	57	48	41	43	41	20	
	# Returning to Same Institution	33	34	23	24	30	3	
	% Returning to Same Institution	57.9%	70.8%	56.1%	55.8%	73.2%	15.0%	-42.9%
	Total First-time Degree Seeking Students	673	610	614	583	630	667	
# Returning to Same Institution	427	412	423	394	457	444		
% Returning to Same Institution	63.4%	67.5%	68.9%	67.6%	72.5%	66.6%	3.1%	
Mass College of Art	Full-time First-time Degree Seeking Students*	208	199	214	244	229	232	
	# Returning to Same Institution	178	167	192	209	192	183	
	% Returning to Same Institution	85.6%	83.9%	89.7%	85.7%	83.8%	78.9%	-6.7%
	Part-time First-time Degree Seeking Students	15	3	2	0	2	3	
	# Returning to Same Institution	8	2	1	0	1	1	
	% Returning to Same Institution	53.3%	66.7%	50.0%		50.0%	33.3%	-20.0%
	Total First-time Degree Seeking Students	223	202	216	244	231	235	
# Returning to Same Institution	186	169	193	209	193	184		
% Returning to Same Institution	83.4%	83.7%	89.4%	85.7%	83.5%	78.3%	-5.1%	

**First Year Retention (Fall to Fall)
First-Time Degree Seeking Students**

	Enrollment Status	Fall 1996 Cohort	Fall 1997 Cohort	Fall 1998 Cohort	Fall 1999 Cohort	Fall 2000 Cohort	Fall 2001 Cohort	Fall 1996 to Fall 2001 Percentage Point Change
Mass College of Liberal Arts	Full-time First-time Degree Seeking Students*	216	176	160	160	163	198	
	# Returning to Same Institution	147	123	118	121	114	135	
	% Returning to Same Institution	68.1%	69.9%	73.8%	75.6%	69.9%	68.2%	0.1%
	Part-time First-time Degree Seeking Students	6	10	7	2	2	8	
	# Returning to Same Institution	3	2	2	1	1	3	
	% Returning to Same Institution	50.0%	20.0%	28.6%	50.0%	50.0%	37.5%	-12.5%
	Total First-time Degree Seeking Students	222	186	167	162	165	206	
# Returning to Same Institution	150	125	120	122	115	138		
% Returning to Same Institution	67.6%	67.2%	71.9%	75.3%	69.7%	67.0%	-0.6%	
Mass Maritime Academy	Full-time First-time Degree Seeking Students*	167	175	198	172	190	213	
	# Returning to Same Institution	136	133	157	147	159	181	
	% Returning to Same Institution	81.4%	76.0%	79.3%	85.5%	83.7%	85.0%	3.5%
	Part-time First-time Degree Seeking Students	2	1	0	3	19	0	
	# Returning to Same Institution	2	1	0	0	14	0	
	% Returning to Same Institution	100.0%	100.0%		0.0%	73.7%		-100.0%
	Total First-time Degree Seeking Students	169	176	198	175	209	213	
# Returning to Same Institution	138	134	157	147	173	181		
% Returning to Same Institution	81.7%	76.1%	79.3%	84.0%	82.8%	85.0%	3.3%	
Salem	Full-time First-time Degree Seeking Students*	747	718	746	486	585	825	
	# Returning to Same Institution	499	494	557	360	402	566	
	% Returning to Same Institution	66.8%	68.8%	74.7%	74.1%	68.7%	68.6%	1.8%
	Part-time First-time Degree Seeking Students	21	15	19	21	17	28	
	# Returning to Same Institution	10	5	9	14	6	11	
	% Returning to Same Institution	47.6%	33.3%	47.4%	66.7%	35.3%	39.3%	-8.3%
	Total First-time Degree Seeking Students	768	733	765	507	602	853	
# Returning to Same Institution	509	499	566	374	408	577		
% Returning to Same Institution	66.3%	68.1%	74.0%	73.8%	67.8%	67.6%	1.4%	
Westfield	Full-time First-time Degree Seeking Students*	755	844	836	899	885	969	
	# Returning to Same Institution	578	632	613	663	668	748	
	% Returning to Same Institution	76.6%	74.9%	73.3%	73.7%	75.5%	77.2%	0.6%
	Part-time First-time Degree Seeking Students	17	199	171	164	177	3	
	# Returning to Same Institution	9	67	53	60	67	3	
	% Returning to Same Institution	52.9%	33.7%	31.0%	36.6%	37.9%	100.0%	47.1%
	Total First-time Degree Seeking Students	772	1,043	1,007	1,063	1,062	972	
# Returning to Same Institution	587	699	666	723	735	751		
% Returning to Same Institution	76.0%	67.0%	66.1%	68.0%	69.2%	77.3%	1.2%	

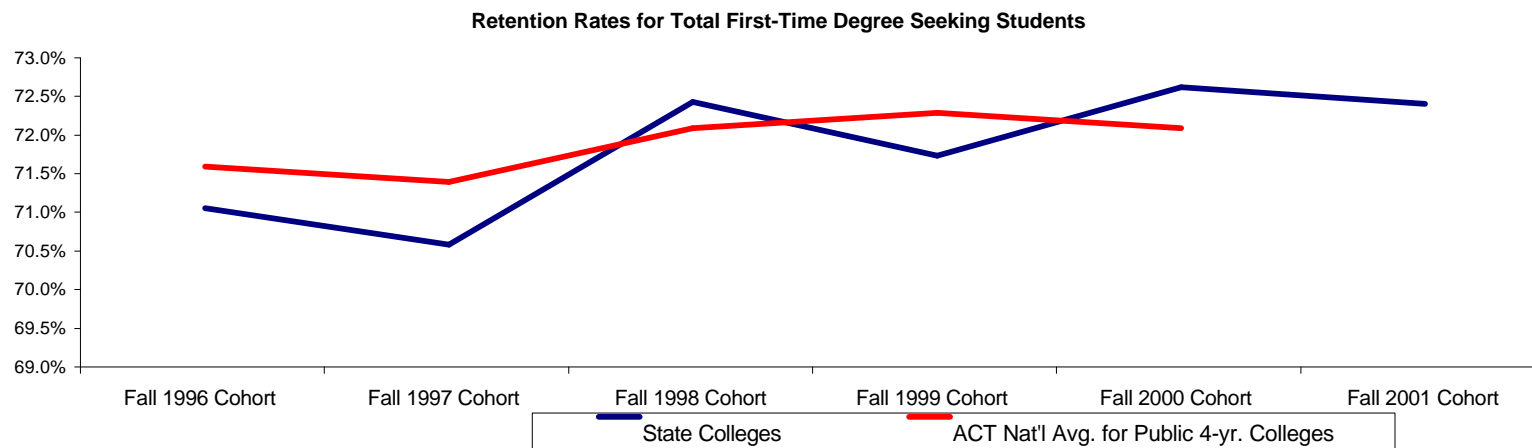
First Year Retention (Fall to Fall) First-Time Degree Seeking Students

		Fall 1996 Cohort	Fall 1997 Cohort	Fall 1998 Cohort	Fall 1999 Cohort	Fall 2000 Cohort	Fall 2001 Cohort	Fall 1996 to Fall 2001 Percentage Point Change
Worcester	Enrollment Status							
	Full-time First-time Degree Seeking Students*	202	364	395	379	375	460	
	# Returning to Same Institution	164	291	302	279	276	331	
	% Returning to Same Institution	81.2%	79.9%	76.5%	73.6%	73.6%	72.0%	-9.2%
	Part-time First-time Degree Seeking Students	21	25	12	11	11	12	
	# Returning to Same Institution	16	14	3	4	8	6	
	% Returning to Same Institution	76.2%	56.0%	25.0%	36.4%	72.7%	50.0%	-26.2%
Total First-time Degree Seeking Students	223	389	407	390	386	472		
# Returning to Same Institution	180	305	305	283	284	337		
% Returning to Same Institution	80.7%	78.4%	74.9%	72.6%	73.6%	71.4%	-9.3%	
State Colleges	Full-time First-time Degree Seeking Students*	4,513	4,700	4,746	4,299	4,706	5,087	
	# Returning to Same Institution	3,226	3,405	3,525	3,159	3,489	3,711	
	% Returning to Same Institution	71.5%	72.4%	74.3%	73.5%	74.1%	73.0%	1.5%
	Part-time First-time Degree Seeking Students	175	325	307	339	313	132	
	# Returning to Same Institution	96	132	125	159	146	58	
	% Returning to Same Institution	54.9%	40.6%	40.7%	46.9%	46.6%	43.9%	-10.9%
	Total First-time Degree Seeking Students	4,688	5,025	5,053	4,638	5,019	5,219	
# Returning to Same Institution	3,322	3,537	3,650	3,318	3,635	3,769		
% Returning to Same Institution	70.9%	70.4%	72.2%	71.5%	72.4%	72.2%	1.4%	
ACT National Average for Public Four-Year Colleges								
		71.4%	71.2%	71.9%	72.1%	71.9%		

Source: HEIRS II Student File; American College Testing

Note: Cohort Identification: HEIRS II Fall Term Credit Student Unit Record File. Data Elements **Student Type at Current Registration**=New and **New Student Type**= Degree Seeking First-time freshman. Fulltime = enrolled 12>credits; Part-time = enrolled <12 credits. Adjust cohort (if necessary) to eliminate students from initial cohort who graduated prior to next fall term (if any) and would not be expected to return. # returning derived from matching Student SSN and Student ID in the following fall term HEIRS II Student file. Rate (%) = #returned/# in cohort.

*Shaded areas (i.e., full-time, first-time, degree seeking students) are the data used for measuring performance. Non-shaded information is for campus informational purposes only

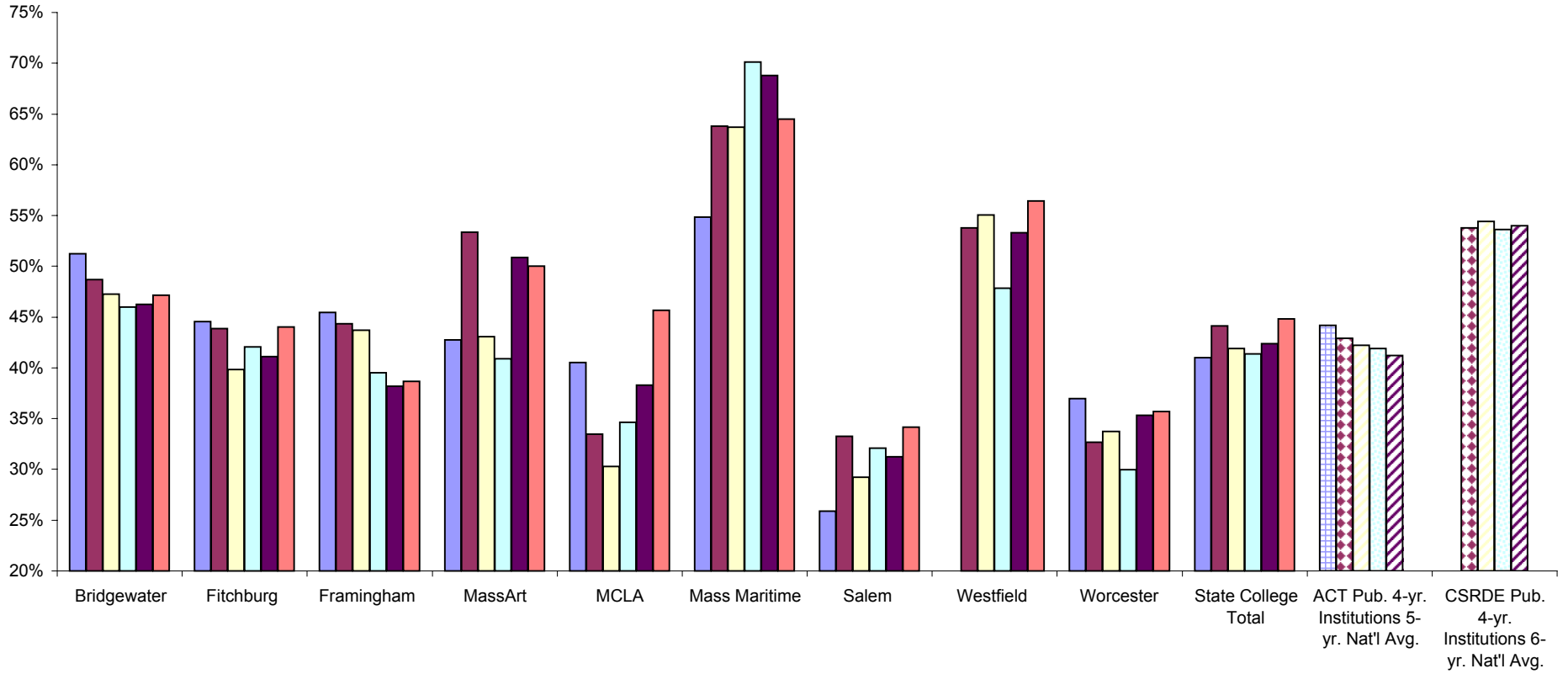


Six-Year Graduation Rate
(First-time Full-time Baccalaureate Degree-seeking Freshmen Cohort)

		1997 (1991 Cohort)	1998 (1992 Cohort)	1999 (1993 Cohort)	2000 (1994 Cohort)	2001 (1995 Cohort)	2002 (1996 Cohort)
Bridgewater	Total Number of Students	982	963	1045	1048	1087	1154
	# Graduating within six years	503	469	494	482	503	544
	% Graduating within six years	51.2%	48.7%	47.3%	46.0%	46.3%	47.1%
Fitchburg	Total Number of Students	759	538	550	739	574	436
	# Graduating within six years	338	236	219	311	236	192
	% Graduating within six years	44.5%	43.9%	39.8%	42.1%	41.1%	44.0%
Framingham	Total Number of Students	385	577	517	463	600	644
	# Graduating within six years	175	256	226	183	229	249
	% Graduating within six years	45.5%	44.4%	43.7%	39.5%	38.2%	38.7%
Mass College of Art	Total Number of Students	166	163	144	159	226	210
	# Graduating within six years	71	87	62	65	115	105
	% Graduating within six years	42.8%	53.4%	43.1%	40.9%	50.9%	50.0%
Mass College of Liberal Arts	Total Number of Students	422	203	228	208	290	311
	# Graduating within six years	171	68	69	72	111	142
	% Graduating within six years	40.5%	33.5%	30.3%	34.6%	38.3%	45.7%
Mass Maritime Academy	Total Number of Students	195	188	168	194	173	169
	# Graduating within six years	107	120	107	136	119	109
	% Graduating within six years	54.9%	63.8%	63.7%	70.1%	68.8%	64.5%
Salem	Total Number of Students	1020	884	1020	907	982	747
	# Graduating within six years	264	294	298	291	307	255
	% Graduating within six years	25.9%	33.3%	29.2%	32.1%	31.3%	34.1%
Westfield	Total Number of Students	Not Reported	764	777	826	715	755
	# Graduating within six years		411	428	395	381	426
	% Graduating within six years		53.8%	55.1%	47.8%	53.3%	56.4%
Worcester	Total Number of Students	438	465	471	487	433	406
	# Graduating within six years	162	152	159	146	153	145
	% Graduating within six years	37.0%	32.7%	33.8%	30.0%	35.3%	35.7%
State Colleges	Total Number of Students	4367	4745	4920	5031	5080	4832
	# Graduating within six years	1791	2093	2062	2081	2154	2167
	% Graduating within six years	41.0%	44.1%	41.9%	41.4%	42.4%	44.8%
ACT Public 4-year Institutions Five-year National Average		44.2%	42.9%	42.2%	41.9%	41.2%	
CSRDE Public 4-year Institutions Six-year National Average			53.8%	54.4%	53.6%	54.0%	

Source: IPEDS Graduation Rate Survey; American College Testing (ACT); Consortium for Student Retention Data Exchange (CSRDE) Survey

Six-Year Graduation Rates



■ 1997 ■ 1998 ■ 1999 ■ 2000 ■ 2001 ■ 2002

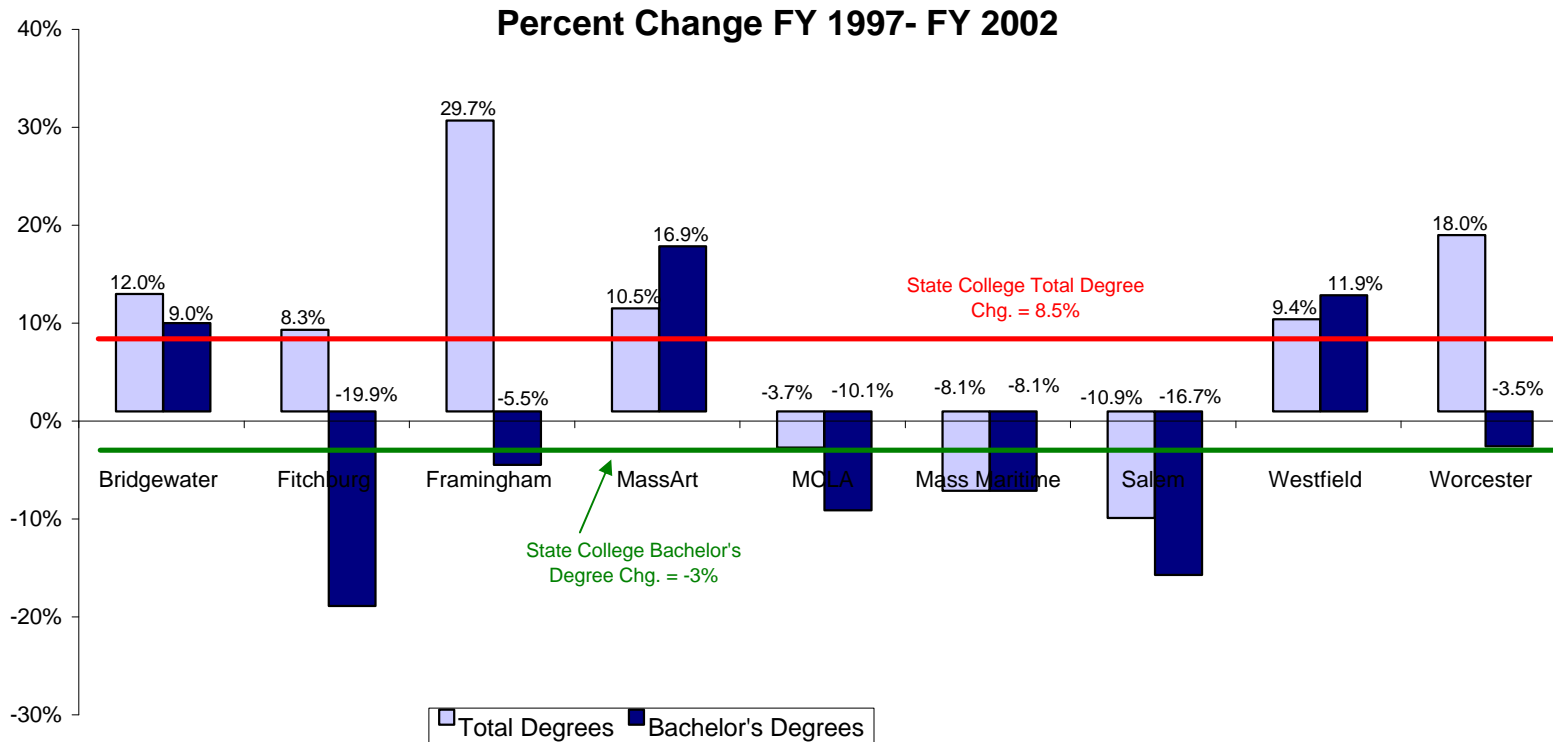
Degrees Awarded

	Degree Type	FY 1997	FY 1998	FY 1999	FY 2000	FY 2001	FY 2002	# Change	% Change
								FY97 - FY02	FY97 - FY02
Bridgewater	Bachelor	1,086	1,158	1,202	1,169	1,144	1,184	98	9.0%
	Post-Bacc. Certificate	128	122	148	134	83	95	-33	-25.8%
	Master	148	188	151	188	225	250	102	68.9%
	Certificate of Adv. Graduate Study	15	18	17	17	21	13	-2	-13.3%
	Total	1,377	1,486	1,518	1,508	1,473	1,542	165	12.0%
Fitchburg	Certificate			5	9	12	12	12	
	Bachelor	584	573	559	596	477	468	-116	-19.9%
	Post-Bacc. Certificate	6	15	37	9	11	8	2	33.3%
	Master	267	309	347	307	277	463	196	73.4%
	Certificate of Adv. Graduate Study	43	31	36	39	27	24	-19	-44.2%
Total	900	928	984	960	804	975	75	8.3%	
Framingham	Bachelor	603	517	562	572	567	570	-33	-5.5%
	Master	252	293	465	411	474	539	287	113.9%
	Total	855	810	1,027	983	1,041	1,109	254	29.7%
Mass College of Art	Certificate	20	18	1	20	16	18	-2	-10.0%
	Bachelor	172	192	241	209	243	201	29	16.9%
	Post-Bacc. Certificate	9	1	2	1	1	5	-4	-44.4%
	Master	27	44	33	26	36	28	1	3.7%
	Total	228	255	277	256	296	252	24	10.5%
Mass College of Liberal Arts	Certificate			2	2				
	Bachelor	277	269	327	327	296	249	-28	-10.1%
	Master	20	28	15	43	36	37	17	85.0%
	Total	297	297	344	372	332	286	-11	-3.7%
Mass Maritime Academy	Bachelor	148	120	134	136	130	136	-12	-8.1%
	Total	148	120	134	136	130	136	-12	-8.1%
Salem	Bachelor	988	1,009	916	938	910	823	-165	-16.7%
	Master	317	339	315	376	346	321	4	1.3%
	Certificate of Adv. Grad. Study		12		11	8	19	19	
	Total	1,305	1,360	1,231	1,325	1,264	1,163	-142	-10.9%
Westfield	Bachelor	758	830	753	840	811	848	90	11.9%
	Post-Bacc. Certificate	49	49	47	43	18	17	-32	-65.3%
	Master	57	95	113	108	113	82	25	43.9%
	Certificate of Adv. Grad. Study	6	13	6	3	5	5	-1	-16.7%
	Total	870	987	919	994	947	952	82	9.4%

Degrees Awarded

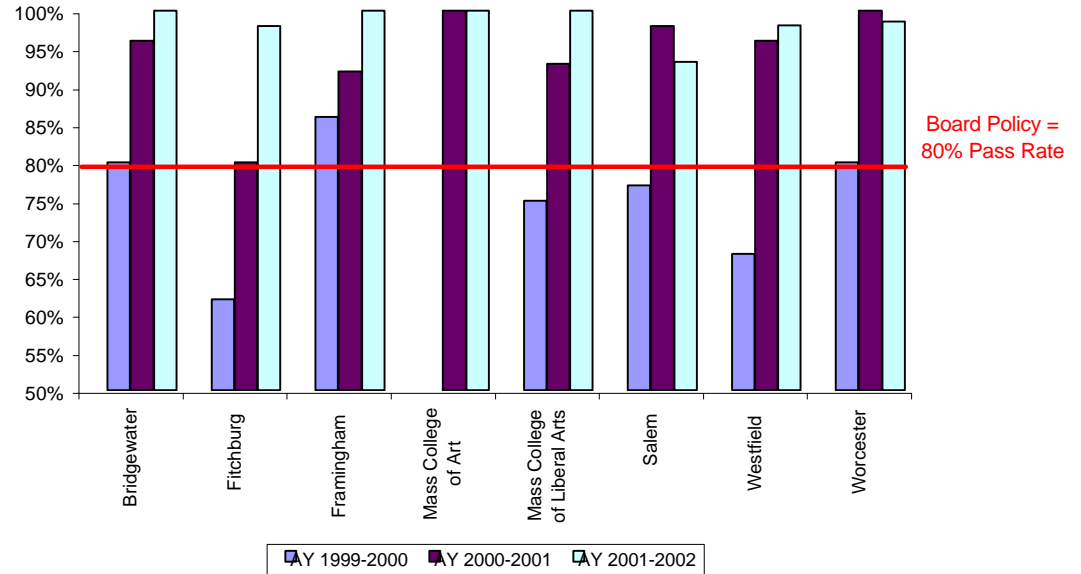
	Degree Type	FY 1997	FY 1998	FY 1999	FY 2000	FY 2001	FY 2002	# Change		% Change	
								FY97 - FY02	FY97 - FY02	FY97 - FY02	FY97 - FY02
Worcester	Bachelor	648	620	604	589	593	625	-23	-3.5%		
	Post-Bacc. Certificate				70	49	98	98			
	Master	102	140	96	138	154	162	60	58.8%		
	Total	750	760	700	797	796	885	135	18.0%		
State College Total	Certificate	20	18	8	31	28	30	10	50.0%		
	Bachelor	5,264	5,288	5,298	5,376	5,171	5,104	-160	-3.0%		
	Post-Bacc. Certificate	192	187	234	257	162	223	31	16.1%		
	Master	1,190	1,436	1,535	1,597	1,661	1,882	692	58.2%		
	Certificate of Adv. Grad. Study	64	74	59	70	61	61	-3	-4.7%		
	Total	6,730	7,003	7,134	7,331	7,083	7,300	570	8.5%		

Source: HEIRS II Degrees File



Massachusetts Test for Educator Licensure (MTEL) Pass Rates

		AY 99-00	AY 00-01	AY 01-02
Bridgewater	# Test Takers	380	228	251
	# Passing	305	220	250
	Pass Rate	80%	96%	100%
Fitchburg	# Test Takers	111	104	98
	# Passing	69	83	96
	Pass Rate	62%	80%	98%
Framingham	# Test Takers	108	85	79
	# Passing	93	78	79
	Pass Rate	86%	92%	100%
MassArt*	# Test Takers		18	18
	# Passing		18	18
	Pass Rate	N/A	100%	100%
Mass College of Liberal Arts	# Test Takers	36	41	30
	# Passing	27	38	30
	Pass Rate	75%	93%	100%
Mass Maritime Academy**		N/A	N/A	N/A
Salem	# Test Takers	128	132	118
	# Passing	98	130	110
	Pass Rate	77%	98%	93%
Westfield	# Test Takers	190	136	154
	# Passing	130	131	151
	Pass Rate	68%	96%	98%
Worcester	# Test Takers	100	49	68
	# Passing	80	49	67
	Pass Rate	80%	100%	99%



Source: Title II; Mass. Department of Education

*MassArt data were not included in AY 99-00 because of the number of test takers (< 10).

**Massachusetts Maritime Academy does not have a teacher education program.

Performance Accountability Objective: Student Access & Success

Degrees Awarded

Westfield

Degrees awarded- Post-bacc- These programs are being eliminated and rolled into Masters Programs. Thus, the report shows a significant reduction in the percentage



Performance Accountability Objective Qualified Students

- Percentage of Special Admission Students
- Minimum High School Weighted Grade Point Average of Incoming First-year Students

Percent of Special Admission Students

	Status	Type	Fall 1997	Fall 1998	Fall 1999	Fall 2000	Fall 2001	Fall 2002	
Bridgewater	Accepted	# New Students						4,734	
		# Special Admits						424	
		% Special Admits						9%	
	Enrolled	# New Students	1,857	1,792	1,758	1,939	1,848	2,032	
		# Special Admits	202	184	170	310	219	221	
		% Special Admits	11%	10%	10%	16%	12%	11%	
Fitchburg*	Accepted	# New Students						2,163	
		# Special Admits						135	
		% Special Admits						6%	
	Enrolled	# New Students				609	724	762	887
		# Special Admits				136	44	36	48
		% Special Admits				27%	28%	22%	6%
Framingham	Accepted	# New Students						2,814	
		# Special Admits						246	
		% Special Admits						9%	
	Enrolled	# New Students	1,153	1,062	958	1,041	1,023	1,050	
		# Special Admits	110	115	101	100	137	94	
		% Special Admits	10%	11%	10%	10%	13%	9%	
Mass College of Art	Accepted	# New Students						745	
		# Special Admits						34	
		% Special Admits						5%	
	Enrolled	# New Students	340	348	401	389	393	371	
		# Special Admits	26	24	22	29	18	24	
		% Special Admits	8%	7%	5%	7%	5%	6%	
Mass College of Liberal Arts	Accepted	# New Students						1,007	
		# Special Admits						80	
		% Special Admits						8%	
	Enrolled	# New Students	430	338	350	393	406	416	
		# Special Admits	39	53	21	48	40	29	
		% Special Admits	9%	16%	6%	12%	10%	7%	
Mass Maritime Academy**	Accepted	# New Students						500	
		# Special Admits						25	
		% Special Admits						5%	
	Enrolled	# New Students	259	274	264		250	253	
		# Special Admits	26	26	22		19	14	
		% Special Admits	10%	9%	8%	19%	8%	6%	

Percent of Special Admission Students

	Status	Type	Fall 1997	Fall 1998	Fall 1999	Fall 2000	Fall 2001	Fall 2002
Salem*	Accepted	# New Students						4,090
		# Special Admits						799
		% Special Admits						20%
	Enrolled	# New Students			1,139	1,427	1,492	1,664
		# Special Admits			28	117	185	121
		% Special Admits	29%	16%	2%	8%	12%	7%
Westfield	Accepted	# New Students						2,900
		# Special Admits						100
		% Special Admits						3%
	Enrolled	# New Students	1,082	1,068	1,146	1,078	1,186	1,208
		# Special Admits	117	117	103	59	61	55
		% Special Admits	11%	11%	9%	5%	5%	5%
Worcester	Accepted	# New Students						2,292
		# Special Admits						293
		% Special Admits						13%
	Enrolled	# New Students	916	803	859	1,058	1,153	1,124
		# Special Admits	63	69	70	138	135	125
		% Special Admits	7%	9%	8%	13%	12%	11%

Source: HEIRS II Student File

* The percentage of special admission students at Fitchburg and Salem State Colleges for Fall 1997 and Fall 1998 are from separate audits and not from data submitted to HEIRS I.

**According to student records submitted in HEIRS I by Mass Maritime for Fall 2000, there were no special admission students. A subsequent data check revealed that 46 students did not meet the admission criteria on either the GPA or sliding scale and should have been coded as special admission students.

Board Policy for Special Admits	Fall 97	Fall 98	Fall 99	Fall 00*	Fall 01*	Fall 02**
	15%	12%	10%	10%	10%	10%

* Note: For FY2001 and FY 2002, all campuses except Massachusetts College of Art asked for and received a waiver to increase the percentage of Special Admissions to 15%

** Note: For FY03, Bridgewater, MCLA, and Salem asked for and received a waiver to increase the percentage of Special Admissions to 15%.

High School Weighted GPA

(Students accepted with less than a 2.0 including those missing HSGPA)

	Fall 2000	Fall 2001	Fall 2002
Bridgewater *	0	0	1
Fitchburg	0	4	0
Framingham	0	0	0
Mass College of Art	0	0	0
Mass College of Liberal Arts	1	0	0
Mass Maritime Academy	11	0	0
Salem	1	12	0
Westfield	0	0	0
Worcester	3	7	0

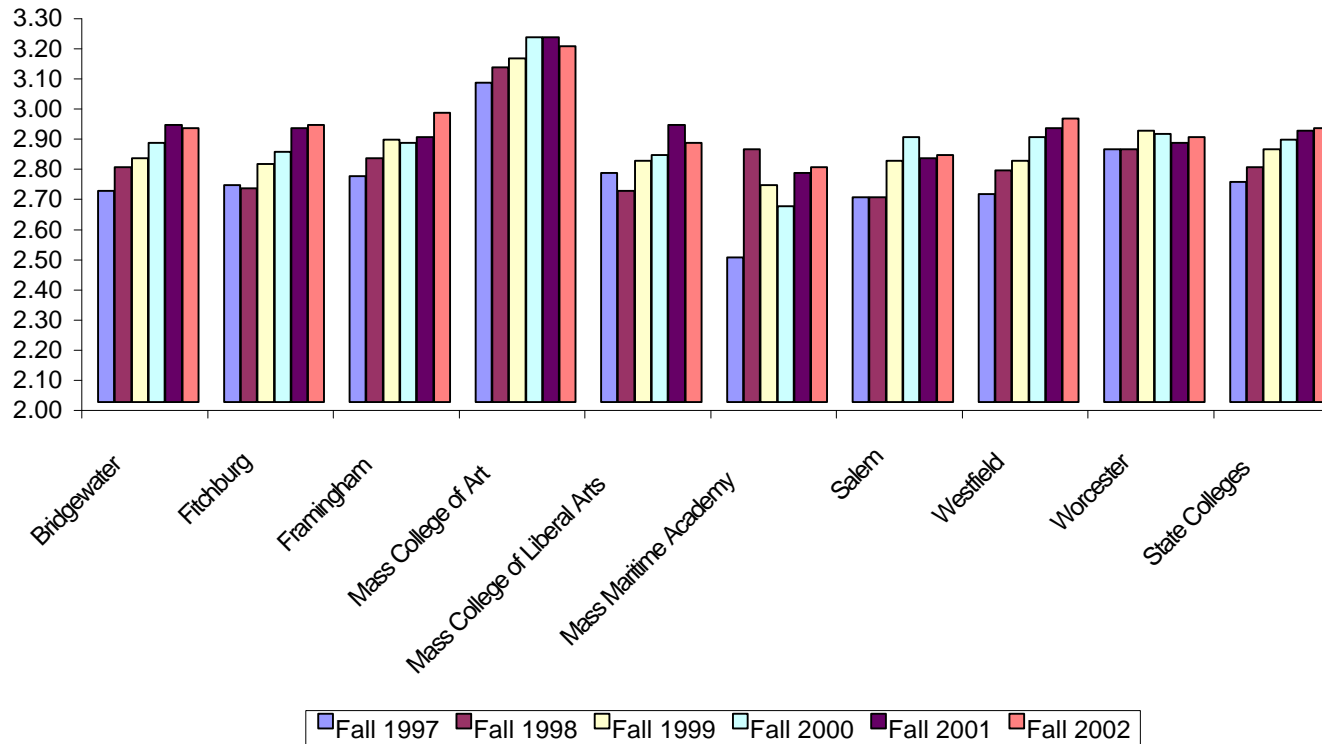
Source: HEIRS II Student File

Average High School Weighted GPA

(First-time Students Only, Informational Only)

	Fall 1997	Fall 1998	Fall 1999	Fall 2000	Fall 2001	Fall 2002
Bridgewater	2.70	2.78	2.81	2.86	2.92	2.91
Fitchburg	2.72	2.71	2.79	2.83	2.91	2.92
Framingham	2.75	2.81	2.87	2.86	2.88	2.96
Mass College of Art	3.06	3.11	3.14	3.21	3.21	3.18
Mass College of Liberal Arts	2.76	2.70	2.80	2.82	2.92	2.86
Mass Maritime Academy	2.48	2.84	2.72	2.65	2.76	2.78
Salem	2.68	2.68	2.80	2.88	2.81	2.82
Westfield	2.69	2.77	2.80	2.88	2.91	2.94
Worcester	2.84	2.84	2.90	2.89	2.86	2.88
State Colleges	2.73	2.78	2.84	2.87	2.90	2.91

Source: HEIRS II Student File



Performance Accountability Objective: Qualified Students

Percent of Special Admission Students MCLA

Concerning the tally of "special admit" students, in April of 1999 the BHE first recognized our IEP summer seminar. The program has been in operation with federal support for many years, and has continually improved the retention and achievement of participants beyond that predicted by their educational background. In short, nothing has changed in our admissions process or support services in regard to this population, except that BHE considered them as special admits prior to April 1999.



Performance Accountability Objective Cost Effective Use of Resources

- Capital Adaptation and Renewal
- Institutional Support Costs per Fall
Headcount Compared to Peer Average

Capital Adaptation and Renewal

	FY 1998	FY 1999	FY 2000	FY 2001	FY 2002	Three-year Rolling Average FY 2000 to FY 2002
Bridgewater	4.2%	5.5%	8.3%	11.1%	6.5%	8.7%
Fitchburg*	5.1%	5.4%	5.3%	5.8%	4.0%	5.0%
Framingham	7.7%	12.9%	9.7%	12.5%	8.4%	10.2%
Mass College of Art	3.3%	4.1%	4.8%	5.5%	6.5%	5.6%
Mass College of Liberal Arts	4.5%	8.3%	8.0%	6.0%	5.2%	6.5%
Mass Maritime Academy	3.5%	9.3%	8.8%	5.7%	5.6%	6.5%
Salem	2.9%	4.6%	8.2%	5.0%	5.1%	6.1%
Westfield	2.7%	9.3%	5.8%	10.6%	5.1%	7.2%
Worcester*	6.4%	9.4%	4.6%	6.6%	3.3%	4.8%

Source: Institutional Budget Worksheets

* Fitchburg did not request a waiver for FY 2002. Worcester received a waiver for FY 2002.

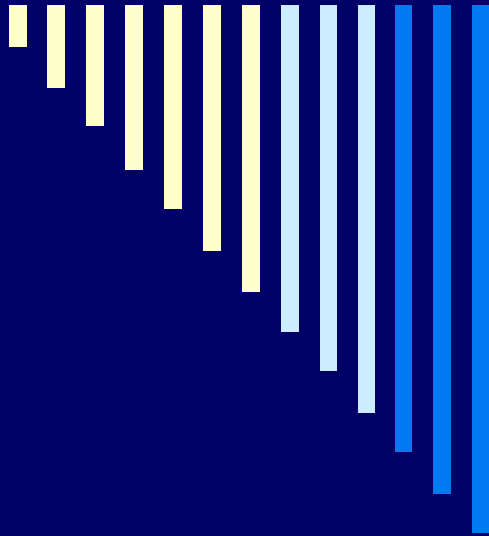
Board Policy for Capital Adaptation and Renewal	The three-year rolling average percentage spent on capital adaptation and renewal can be no less than:					Three-year Rolling Average FY 2000 to FY 2002
	FY98	FY99	FY00	FY01	FY02	
	3.0%	4.0%	4.5%	5.0%	5.0%	4.8%

Institutional Support Costs Compared to Peer Average

	FY 1997		FY 1998		FY 1999		FY 2000		FY 2001		FY 2002	
	Unrestricted Institutional Support per Fall Headcount	Target - No More than Peer Average + 10%	Unrestricted Institutional Support per Fall Headcount	Target - No More than Peer Average + 10%	Unrestricted Institutional Support per Fall Headcount	Target - No More than Peer Average + 10%	Total Institutional Support per Fall Headcount	Target - No More than Peer Average + 10%	Total Institutional Support per Fall Headcount	Target - No More than Peer Average	Total Institutional Support per Fall Headcount	Target - No More than Peer Average
Bridgewater	\$863	\$1,297	\$850	\$1,398	\$905	\$1,436	\$1,099	\$1,489	\$1,275	\$1,445	\$1,245	\$1,477
Fitchburg	\$948	\$1,068	\$882	\$1,263	\$834	\$1,424	\$1,097	\$1,565	\$1,202	\$1,403	\$1,277	\$1,441
Framingham	\$891	\$1,595	\$697	\$1,540	\$660	\$1,683	\$734	\$2,007	\$844	\$1,881	\$943	\$2,084
MCA*	\$1,448	\$3,591	\$1,463	\$3,615	\$1,450	\$3,501	\$1,595	\$3,634	\$1,804	\$3,911	\$1,879	\$4,073
MCLA*	\$1,991	\$3,316	\$2,210	\$3,372	\$2,389	\$3,637	\$2,480	\$3,775	\$2,429	\$3,860	\$2,118	\$3,650
MMA	\$4,266	\$4,118	\$3,725	\$6,595	\$3,813	\$6,051	\$3,732	\$5,618	\$4,403	\$5,859	\$4,021	\$6,266
Salem	\$750	\$1,313	\$873	\$1,468	\$1,097	\$1,438	\$1,213	\$1,625	\$1,162	\$1,549	\$1,414	\$1,620
Westfield	\$880	\$1,190	\$832	\$1,375	\$760	\$1,521	\$940	\$1,484	\$982	\$1,394	\$699	\$1,669
Worcester	\$590	\$1,190	\$718	\$1,273	\$645	\$1,455	\$718	\$1,553	\$891	\$1,402	\$822	\$1,447

Source: IPEDS Finance, Institutional Characteristics and Enrollment Surveys

*Note: Data for MCA and MCLA for FY 1998 and FY 1999 are based on total institutional support costs as that is the only data available for the private peer institutions. Beginning in FY 1998 expenditure data for these institutions do not include operation and maintenance, as it is not available for their peers.



FY 2004 Additional Key Performance Indicators



Performance Accountability Objective Access and Affordability

- Total Student Charges as Benchmarked Percent of State Median Household Income
- Percent Total Enrollment Comprised of Minorities Benchmarked to Percent Representation of Minorities in Region

Total Student Charges as Percent of State Median Household Income

		FY 1997	FY 1998	FY 1999	FY 2000	FY 2001	FY 2002	FY 1997 to FY 2002 Change	
								\$	%
Bridgewater	Student Charges	\$3,440	\$3,303	\$3,183	\$3,063	\$2,883	\$2,823	-\$617	-17.9%
	Median Income	\$39,604	\$41,212	\$42,511	\$43,736	\$46,312	\$50,155	\$10,551	26.6%
	Student Charges as a Percent of Median Income	8.7%	8.0%	7.5%	7.0%	6.2%	5.6%		
Fitchburg	Student Charges	\$3,330	\$3,296	\$3,208	\$3,018	\$3,018	\$2,988	-\$342	-10.3%
	Median Income	\$39,604	\$41,212	\$42,511	\$43,736	\$46,312	\$50,155	\$10,551	26.6%
	Student Charges as a Percent of Median Income	8.4%	8.0%	7.5%	6.9%	6.5%	6.0%		
Framingham	Student Charges	\$3,228	\$3,150	\$3,070	\$2,890	\$2,830	\$2,770	-\$458	-14.2%
	Median Income	\$39,604	\$41,212	\$42,511	\$43,736	\$46,312	\$50,155	\$10,551	26.6%
	Student Charges as a Percent of Median Income	8.2%	7.6%	7.2%	6.6%	6.1%	5.5%		
Mass College of Art	Student Charges	\$4,034	\$3,964	\$3,904	\$3,808	\$3,878	\$4,068	\$34	0.8%
	Median Income	\$39,604	\$41,212	\$42,511	\$43,736	\$46,312	\$50,155	\$10,551	26.6%
	Student Charges as a Percent of Median Income	10.2%	9.6%	9.2%	8.7%	8.4%	8.1%		
Mass College of Liberal Arts	Student Charges	\$3,485	\$3,437	\$3,377	\$3,357	\$3,357	\$3,497	\$12	0.3%
	Median Income	\$39,604	\$41,212	\$42,511	\$43,736	\$46,312	\$50,155	\$10,551	26.6%
	Student Charges as a Percent of Median Income	8.8%	8.3%	7.9%	7.7%	7.2%	7.0%		
Mass Maritime Academy	Student Charges	\$3,174	\$3,104	\$3,044	\$2,924	\$2,873	\$2,913	-\$261	-8.2%
	Median Income	\$39,604	\$41,212	\$42,511	\$43,736	\$46,312	\$50,155	\$10,551	26.6%
	Student Charges as a Percent of Median Income	8.0%	7.5%	7.2%	6.7%	6.2%	5.8%		
Salem	Student Charges	\$3,344	\$3,257	\$3,078	\$2,958	\$3,098	\$3,038	-\$306	-9.2%
	Median Income	\$39,604	\$41,212	\$42,511	\$43,736	\$46,312	\$50,155	\$10,551	26.6%
	Student Charges as a Percent of Median Income	8.4%	7.9%	7.2%	6.8%	6.7%	6.1%		
Westfield	Student Charges	\$3,162	\$3,094	\$3,034	\$2,974	\$2,916	\$2,956	-\$206	-6.5%
	Median Income	\$39,604	\$41,212	\$42,511	\$43,736	\$46,312	\$50,155	\$10,551	26.6%
	Student Charges as a Percent of Median Income	8.0%	7.5%	7.1%	6.8%	6.3%	5.9%		
Worcester	Student Charges	\$2,683	\$2,615	\$2,555	\$2,458	\$2,508	\$2,573	-\$110	-4.1%
	Median Income	\$39,604	\$41,212	\$42,511	\$43,736	\$46,312	\$50,155	\$10,551	26.6%
	Student Charges as a Percent of Median Income	6.8%	6.3%	6.0%	5.6%	5.4%	5.1%		
State College Average	Student Charges	\$3,287	\$3,192	\$3,103	\$2,984	\$2,962	\$2,954	-\$333	-10.1%
	Median Income	\$39,604	\$41,212	\$42,511	\$43,736	\$46,312	\$50,155	\$10,551	26.6%
	Student Charges as a Percent of Median Income	8.3%	7.7%	7.3%	6.8%	6.4%	5.9%		

Source: Tuition and Fee Survey; US Census Bureau Money Income in the United States Report (2-year average medians)

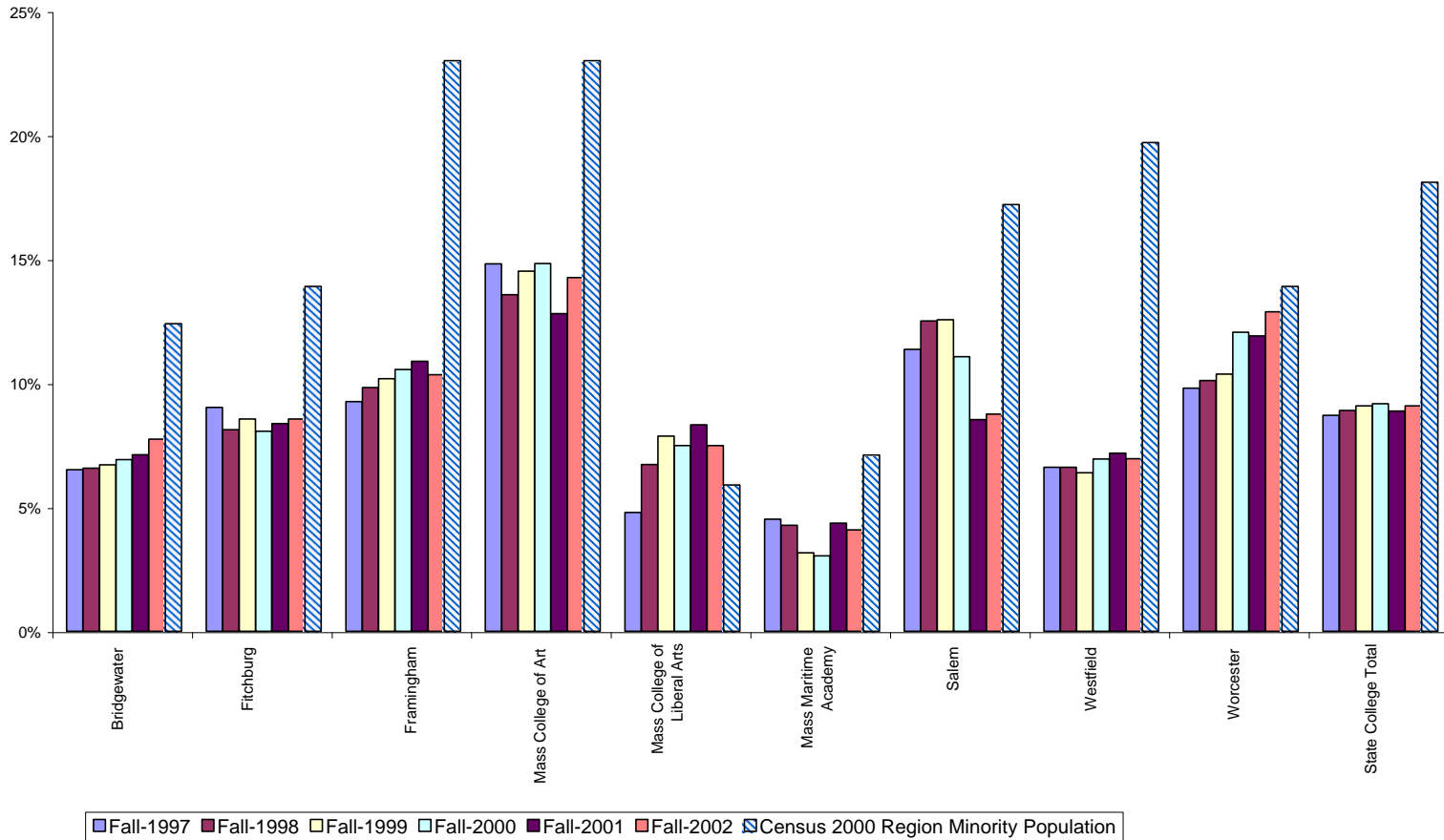
Percent of Total Enrollment Comprised of Minorities Benchmarked to Percent of Minorities in Region

		Census 2000 Region Minority Population		Fall-1997		Fall-1998		Fall-1999		Fall-2000		Fall-2001		Fall-2002		# Change Fall 1997 to Fall 2002	% Change Fall 1997 to Fall 2002
		#	%	#	% of known Ethnicity	#	% of known Ethnicity	#	% of known Ethnicity	#	% of known Ethnicity	#	% of known Ethnicity	#	% of known Ethnicity		
Bridgewater	Minority*	118,815	12.4%	498	6.5%	498	6.6%	498	6.7%	498	6.9%	518	7.1%	624	7.7%	126	25.3%
	Non-Minority			7,149	93.5%	7,069	93.4%	6,927	93.3%	6,698	93.1%	6,761	92.9%	7,434	92.3%	285	4.0%
Fitchburg	Minority	96,550	13.9%	443	9.0%	413	8.1%	357	8.6%	332	8.1%	319	8.4%	360	8.6%	-83	-18.7%
	Non-Minority			4,466	91.0%	4,672	91.9%	3,814	91.4%	3,782	91.9%	3,488	91.6%	3,847	91.4%	-619	-13.9%
Framingham	Minority	599,832	23.0%	361	9.3%	391	9.8%	379	10.2%	402	10.6%	422	10.9%	475	10.3%	114	31.6%
	Non-Minority			3,537	90.7%	3,590	90.2%	3,344	89.8%	3,406	89.4%	3,456	89.1%	4,116	89.7%	579	16.4%
Mass College of Art	Minority	599,832	23.0%	216	14.8%	194	13.6%	204	14.5%	217	14.8%	183	12.8%	210	14.3%	-6	-2.8%
	Non-Minority			1,242	85.2%	1,236	86.4%	1,201	85.5%	1,246	85.2%	1,246	87.2%	1,262	85.7%	20	1.6%
Mass College of Liberal Arts	Minority	7,992	5.9%	93	4.8%	116	6.7%	119	7.9%	118	7.5%	132	8.3%	124	7.5%	31	33.3%
	Non-Minority			1,848	95.2%	1,608	93.3%	1,394	92.1%	1,459	92.5%	1,454	91.7%	1,531	92.5%	-317	-17.2%
Mass Maritime Academy	Minority	17,455	7.1%	33	4.5%	32	4.3%	25	3.2%	25	3.0%	37	4.4%	36	4.1%	3	9.1%
	Non-Minority			698	95.5%	717	95.7%	764	96.8%	797	97.0%	812	95.6%	845	95.9%	147	21.1%
Salem	Minority	172,911	17.2%	775	11.4%	787	12.5%	734	12.6%	626	11.1%	560	8.5%	630	8.8%	-145	-18.7%
	Non-Minority			6,045	88.6%	5,504	87.5%	5,111	87.4%	5,030	88.9%	6,006	91.5%	6,565	91.2%	520	8.6%
Westfield	Minority	137,183	19.7%	283	6.6%	287	6.6%	274	6.4%	301	6.9%	324	7.2%	327	7.0%	44	15.5%
	Non-Minority			3,998	93.4%	4,054	93.4%	4,009	93.6%	4,035	93.1%	4,188	92.8%	4,370	93.0%	372	9.3%
Worcester	Minority	96,550	13.9%	506	9.8%	486	10.1%	495	10.4%	587	12.1%	630	11.9%	650	12.9%	144	28.5%
	Non-Minority			4,657	90.2%	4,323	89.9%	4,278	89.6%	4,283	87.9%	4,661	88.1%	4,396	87.1%	-261	-5.6%
State Colleges	Minority (State)	1,150,738	18.1%	3,208	8.7%	3,204	8.9%	3,085	9.1%	3,106	9.2%	3,125	8.9%	3,436	9.1%	228	7.1%
	Non-Minority			33,640	91.3%	32,773	91.1%	30,842	90.9%	30,736	90.8%	32,072	91.1%	34,366	90.9%	726	2.2%

Source: HEIRS II Student File; US Census

*Notes: Enrollment data not included for unknown or non-resident alien students. Region minority population is based on all individuals that reported a race or ethnicity other than "White, Non-Hispanic" for the 2000 Census. Regions are based on the Massachusetts Department of Economic Development's current regional breakdown of the Commonwealth (See Appendix F for regional descriptions and maps).

Minority Enrollment as a Percent of Total Enrollment with Known Ethnicity





Performance Accountability Objective Meet Regional Economic and Workforce Development Needs

- Graduates: Positive Workforce Placement/Continuing Education – One-year Post Graduation

Graduates: Positive Workforce Placement and Continuing Education One-year Post Graduation

	Placement	1998		1999		2000		2001	
		#	%	#	%	#	%	#	%
Bridgewater	Trackable Graduates	1,478		1,511		1,494		1,465	
	Working in MA or Continuing Education	1,380	93.4%	1,392	92.1%	1,387	92.8%	1,351	92.2%
	-Working only	1,217	82.3%	1,265	83.7%	1,261	84.4%	1,214	82.9%
	-Cont. Ed. only	20	1.4%	17	1.1%	15	1.0%	16	1.1%
	-Working and Cont. Ed.	143	9.7%	110	7.3%	111	7.4%	121	8.3%
	*Trackable Graduates Not Found	98	6.6%	119	7.9%	107	7.2%	114	7.8%
Fitchburg	Trackable Graduates	900		931		911		782	
	Working in MA or Continuing Education	803	89.2%	855	91.8%	817	89.7%	669	85.5%
	-Working only	750	83.3%	783	84.1%	758	83.2%	615	78.6%
	-Cont. Ed. only	4	0.4%	6	0.6%	5	0.5%	11	1.4%
	-Working and Cont. Ed.	49	5.4%	66	7.1%	54	5.9%	43	5.5%
	*Trackable Graduates Not Found	97	10.8%	76	8.2%	94	10.3%	113	14.5%
Framingham	Trackable Graduates	736		868		860		932	
	Working in MA or Continuing Education	601	81.7%	694	80.0%	729	84.8%	749	80.4%
	-Working only	566	76.9%	635	73.2%	676	78.6%	684	73.4%
	-Cont. Ed. only	6	0.8%	19	2.2%	8	0.9%	15	1.6%
	-Working and Cont. Ed.	29	3.9%	40	4.6%	45	5.2%	50	5.4%
	*Trackable Graduates Not Found	135	18.3%	174	20.0%	131	15.2%	183	19.6%
Mass College of Art	Trackable Graduates	250		269		248		284	
	Working in MA or Continuing Education	202	80.8%	207	77.0%	205	82.7%	231	81.3%
	-Working only	188	75.2%	191	71.0%	187	75.4%	212	74.6%
	-Cont. Ed. only	2	0.8%	2	0.7%	5	2.0%	7	2.5%
	-Working and Cont. Ed.	12	4.8%	14	5.2%	13	5.2%	12	4.2%
	*Trackable Graduates Not Found	48	19.2%	62	23.0%	43	17.3%	53	18.7%
Mass College of Liberal Arts	Trackable Graduates	275		323		356		318	
	Working in MA or Continuing Education	224	81.5%	260	80.5%	271	76.1%	243	76.4%
	-Working only	207	75.3%	238	73.7%	242	68.0%	219	68.9%
	-Cont. Ed. only	3	1.1%	7	2.2%	7	2.0%	10	3.1%
	-Working and Cont. Ed.	14	5.1%	15	4.6%	22	6.2%	14	4.4%
	*Trackable Graduates Not Found	51	18.5%	63	19.5%	85	23.9%	75	23.6%
Mass Maritime Academy	Trackable Graduates	120		133		132		129	
	Working in MA or Continuing Education	72	60.0%	91	68.4%	75	56.8%	78	60.5%
	-Working only	66	55.0%	85	63.9%	72	54.5%	74	57.4%
	-Cont. Ed. only	3	2.5%	0	0.0%	2	1.5%	1	0.8%
	-Working and Cont. Ed.	3	2.5%	6	4.5%	1	0.8%	3	2.3%
	*Trackable Graduates Not Found	48	40.0%	42	31.6%	57	43.2%	51	39.5%
Salem	Trackable Graduates	1,352		1,218		1,308		1,240	
	Working in MA or Continuing Education	1,227	90.8%	1,117	91.7%	1,191	91.1%	1,128	91.0%
	-Working only	1,152	85.2%	1,028	84.4%	1,084	82.9%	1,030	83.1%
	-Cont. Ed. only	10	0.7%	8	0.7%	10	0.8%	11	0.9%
	-Working and Cont. Ed.	65	4.8%	81	6.7%	97	7.4%	87	7.0%
	*Trackable Graduates Not Found	125	9.2%	101	8.3%	117	8.9%	112	9.0%

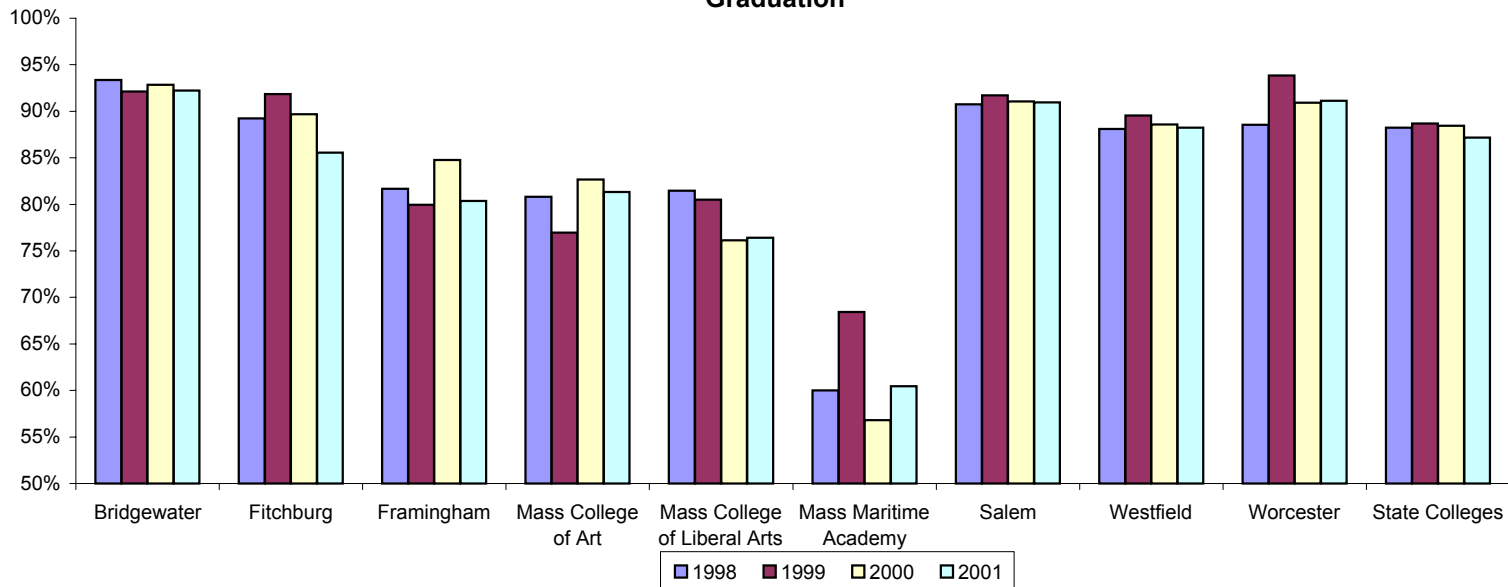
Graduates: Positive Workforce Placement and Continuing Education One-year Post Graduation

	Placement	1998		1999		2000		2001	
		#	%	#	%	#	%	#	%
Westfield	Trackable Graduates	983		918		991		944	
	Working in MA or Continuing Education	866	88.1%	822	89.5%	878	88.6%	833	88.2%
	-Working only	790	80.4%	742	80.8%	784	79.1%	744	78.8%
	-Cont. Ed. only	8	0.8%	14	1.5%	13	1.3%	18	1.9%
	-Working and Cont. Ed.	68	6.9%	66	7.2%	81	8.2%	71	7.5%
	*Trackable Graduates Not Found	117	11.9%	96	10.5%	113	11.4%	111	11.8%
Worcester	Trackable Graduates	759		697		726		745	
	Working in MA or Continuing Education	672	88.5%	654	93.8%	660	90.9%	679	91.1%
	-Working only	606	79.8%	605	86.8%	606	83.5%	602	80.8%
	-Cont. Ed. only	12	1.6%	3	0.4%	6	0.8%	6	0.8%
	-Working and Cont. Ed.	54	7.1%	46	6.6%	48	6.6%	71	9.5%
	*Trackable Graduates Not Found	87	11.5%	43	6.2%	66	9.1%	66	8.9%
State College Total	Trackable Graduates	6,853		6,868		7,026		6,839	
	Working in MA or Continuing Education	6,047	88.2%	6,092	88.7%	6,213	88.4%	5,961	87.2%
	-Working only	5,542	80.9%	5,572	81.1%	5,670	80.7%	5,394	78.9%
	-Cont. Ed. only	68	1.0%	76	1.1%	71	1.0%	95	1.4%
	-Working and Cont. Ed.	437	6.4%	444	6.5%	472	6.7%	472	6.9%
	*Trackable Graduates Not Found	806	11.8%	776	11.3%	813	11.6%	878	12.8%

Source: MISER calculations from DET and NSC data

*Trackable Graduates Not Found are graduates that were not found to be employed in Massachusetts or in the National Student Clearinghouse database (which maintains enrollment data for 90% of colleges at any level in the United States.) Nontrackable graduates may be working outside of Massachusetts, unemployed in Massachusetts, or self-employed in Massachusetts, and/or attending college at a college not participating in NSC.

Percent of Graduates Working in Massachusetts or Continuing Education One-year Post Graduation



Graduates Continuing Education

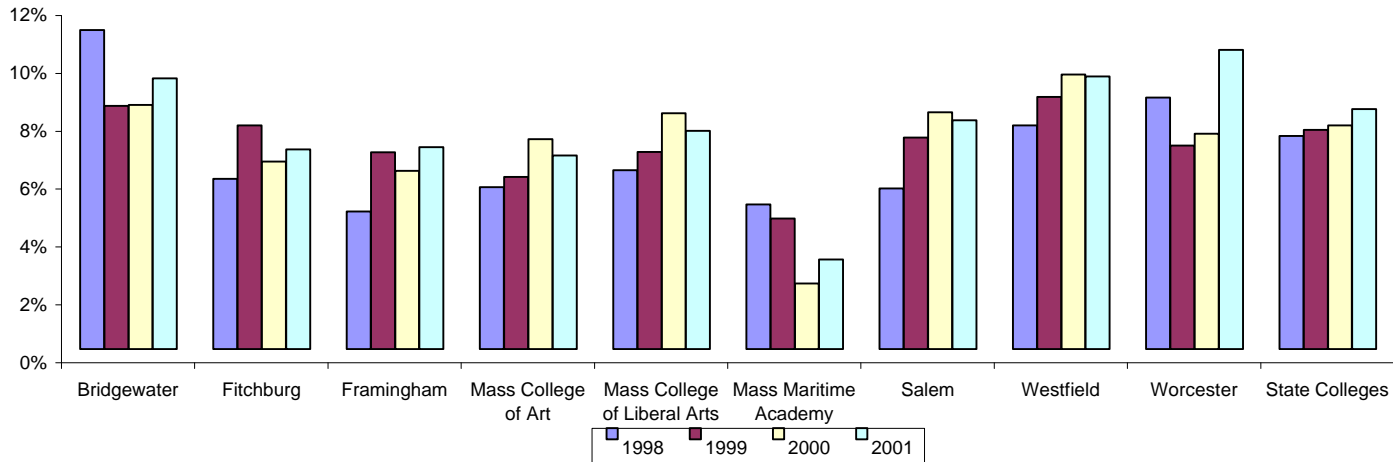
	Placement	1998		1999		2000		2001	
		#	%	#	%	#	%	#	%
Bridgewater	Trackable Graduates	1,478		1,511		1,494		1,465	
	Trackable Grads Continuing Education	163	11.0%	127	8.4%	126	8.4%	137	9.4%
	-Cont. Ed. within System	82	5.5%	50	3.3%	55	3.7%	52	3.5%
	-MA Community Colleges	11	0.7%	15	1.0%	12	0.8%	16	1.1%
	-MA State Colleges	58	3.9%	17	1.1%	26	1.7%	16	1.1%
	-UMass	13	0.9%	14	0.9%	15	1.0%	17	1.2%
-Cont. Ed. outside System	81	5.5%	77	5.1%	71	4.8%	85	5.8%	
Fitchburg	Trackable Graduates	900		931		911		782	
	Trackable Grads Continuing Education	53	5.9%	72	7.7%	59	6.5%	54	6.9%
	-Cont. Ed. within System	29	3.2%	41	4.4%	36	4.0%	23	2.9%
	-MA Community Colleges	8	0.9%	6	0.6%	10	1.1%	8	1.0%
	-MA State Colleges	12	1.3%	24	2.6%	13	1.4%	8	1.0%
	-UMass	9	1.0%	11	1.2%	12	1.3%	7	0.9%
-Cont. Ed. outside System	24	2.7%	31	3.3%	23	2.5%	31	4.0%	
Framingham	Trackable Graduates	736		868		860		932	
	Trackable Grads Continuing Education	35	4.8%	59	6.8%	53	6.2%	65	7.0%
	-Cont. Ed. within System	13	1.8%	23	2.6%	23	2.7%	25	2.7%
	-MA Community Colleges	3	0.4%	4	0.5%	8	0.9%	2	0.2%
	-MA State Colleges	7	1.0%	6	0.7%	7	0.8%	11	1.2%
	-UMass	3	0.4%	13	1.5%	8	0.9%	12	1.3%
-Cont. Ed. outside System	22	3.0%	36	4.1%	30	3.5%	40	4.3%	
Mass College of Art	Trackable Graduates	250		269		248		284	
	Trackable Grads Continuing Education	14	5.6%	16	5.9%	18	7.3%	19	6.7%
	-Cont. Ed. within System	5	2.0%	4	1.5%	5	2.0%	3	1.1%
	-MA Community Colleges	2	0.8%	1	0.4%	1	0.4%	1	0.4%
	-MA State Colleges	3	1.2%	1	0.4%	3	1.2%	2	0.7%
	-UMass	0	0.0%	2	0.7%	1	0.4%	0	0.0%
-Cont. Ed. outside System	9	3.6%	12	4.5%	13	5.2%	16	5.6%	
Mass College of Liberal Arts	Trackable Graduates	275		323		356		318	
	Trackable Grads Continuing Education	17	6.2%	22	6.8%	29	8.1%	24	7.5%
	-Cont. Ed. within System	10	3.6%	5	1.5%	12	3.4%	6	1.9%
	-MA Community Colleges	1	0.4%	2	0.6%	3	0.8%	2	0.6%
	-MA State Colleges	6	2.2%	2	0.6%	4	1.1%	2	0.6%
	-UMass	3	1.1%	1	0.3%	3	0.8%	2	0.6%
-Cont. Ed. outside System	7	2.5%	17	5.3%	17	4.8%	18	5.7%	
Mass Maritime Academy	Trackable Graduates	120		133		132		129	
	Trackable Grads Continuing Education	6	5.0%	6	4.5%	3	2.3%	4	3.1%
	-Cont. Ed. within System	1	0.8%	3	2.3%	1	0.8%	2	1.6%
	-MA Community Colleges	1	0.8%	0	0.0%	0	0.0%	0	0.0%
	-MA State Colleges	0	0.0%	1	0.8%	0	0.0%	0	0.0%
	-UMass	0	0.0%	2	1.5%	1	0.8%	2	1.6%
-Cont. Ed. outside System	5	4.2%	3	2.3%	2	1.5%	2	1.6%	

Graduates Continuing Education

	Placement	1998		1999		2000		2001	
		#	%	#	%	#	%	#	%
Salem	Trackable Graduates	1,352		1,218		1,308		1,240	
	Trackable Grads Continuing Education	75	5.5%	89	7.3%	107	8.2%	98	7.9%
	-Cont. Ed. within System	38	2.8%	43	3.5%	56	4.3%	39	3.1%
	-MA Community Colleges	6	0.4%	14	1.1%	10	0.8%	10	0.8%
	-MA State Colleges	21	1.6%	19	1.6%	30	2.3%	23	1.9%
	-UMass	11	0.8%	8	0.7%	14	1.1%	6	0.5%
-Cont. Ed. outside System	37	2.7%	46	3.8%	51	3.9%	59	4.8%	
Westfield	Trackable Graduates	983		918		991		944	
	Trackable Grads Continuing Education	76	7.7%	80	8.7%	94	9.5%	89	9.4%
	-Cont. Ed. within System	40	4.1%	42	4.6%	40	4.0%	38	4.0%
	-MA Community Colleges	18	1.8%	17	1.9%	16	1.6%	14	1.5%
	-MA State Colleges	9	0.9%	15	1.6%	10	1.0%	11	1.2%
	-UMass	13	1.3%	10	1.1%	13	1.3%	13	1.4%
-Cont. Ed. outside System	36	3.7%	38	4.1%	54	5.4%	51	5.4%	
Worcester	Trackable Graduates	759		697		726		745	
	Trackable Grads Continuing Education	66	8.7%	49	7.0%	54	7.4%	77	10.3%
	-Cont. Ed. within System	22	2.9%	15	2.2%	15	2.1%	28	3.8%
	-MA Community Colleges	4	0.5%	0	0.0%	3	0.4%	6	0.8%
	-MA State Colleges	6	0.8%	8	1.1%	9	1.2%	9	1.2%
	-UMass	12	1.6%	6	0.9%	1	0.1%	11	1.5%
-Cont. Ed. outside System	44	5.8%	34	4.9%	39	5.4%	49	6.6%	
State College Total	Trackable Graduates	6,853		6,868		7,026		6,839	
	Trackable Grads Continuing Education	505	7.4%	520	7.6%	543	7.7%	567	8.3%
	-Cont. Ed. within System	240	3.5%	226	3.3%	243	3.5%	216	3.2%
	-MA Community Colleges	54	0.8%	59	0.9%	63	0.9%	59	0.9%
	-MA State Colleges	122	1.8%	93	1.4%	102	1.5%	82	1.2%
	-UMass	64	0.9%	67	1.0%	68	1.0%	70	1.0%
-Cont. Ed. outside System	265	3.9%	294	4.3%	300	4.3%	351	5.1%	

Source: MISER calculations from DET and NSC data

Percent of Graduates Continuing Education One-year Post Graduation





Performance Accountability Objective Cost Effective Use of Resources

- Non-Instructional Support Costs as Percent of Education and General Expenditures

Non-Instructional Support Costs

(Academic Support, Student Services and Institutional Support as a Percentage of Total Education and General Expenditures including Scholarships)

	FY1998		FY1999		FY2000		FY2001		FY2002	
	% Non- Instructional Support Cost	Peer Avg.	% Non- Instructional Support Cost	Peer Avg.	% Non- Instructional Support Cost	Peer Avg.	% Non- Instructional Support Cost	Peer Avg.	% Non- Instructional Support Cost	Peer Avg.
Bridgewater	40.7%	32.9%	39.3%	32.5%	39.9%	32.6%	40.6%	31.9%	42.9%	32.8%
Fitchburg	31.5%	32.1%	32.5%	32.5%	33.8%	32.8%	35.4%	32.3%	37.0%	34.9%
Framingham	34.9%	32.9%	35.8%	32.9%	36.6%	33.3%	37.1%	33.2%	40.4%	34.1%
Mass College of Art	44.0%	39.0%	43.4%	37.9%	43.0%	43.1%	43.7%	44.9%	44.2%	40.5%
Mass College of Liberal Arts	47.1%	50.3%	49.3%	50.0%	50.7%	49.6%	53.7%	51.3%	49.2%	50.8%
Mass Maritime Academy	32.1%	29.9%	31.9%	32.6%	32.2%	32.5%	33.2%	33.1%	47.3%	47.4%
Salem	34.9%	31.4%	36.3%	30.4%	32.0%	31.3%	35.8%	31.3%	39.7%	32.4%
Westfield	35.2%	32.7%	34.3%	33.0%	35.7%	32.0%	35.5%	31.7%	34.6%	35.3%
Worcester	33.9%	33.3%	29.5%	34.6%	31.3%	34.4%	31.4%	35.1%	32.8%	36.6%

Source: IPEDS Finance Survey

*Note: Data for MCA and MCLA for FY 1998 and FY 1999 are based on total institutional support costs as that is the only data available for the private peer institutions. Expenditure data for these institutions do not include operation and maintenance, as it is not available for their peers.



Performance Accountability Objective Higher Education Collaboration

- Number of Community College Students Matriculated into Four-year Colleges Through Joint Admissions

Community College Students Matriculated in State Colleges through Joint Admissions

	Fall 1997	Fall 1998	Fall 1999	Fall 2000	Fall 2001	Fall 2002
Bridgewater	0	3	44	107	82*	N/A
Fitchburg	0	17	24	83	57	40*
Framingham	0	0	33	56	64	76
Mass College of Art	Does not participate in Program					
Mass College of Liberal Arts	0	12	11	27	41	45
Mass Maritime Academy	0	0	0	N/A	0	N/A
Salem	3	13	34	102	74	125
Westfield	0	5	38	98	135	119
Worcester	11	20	21	57	84	19*

Source: Campus Data

*Institution reported new students only.

N/A = Data not Submitted



Performance Accountability Objective Fundraising

- Total Private Funds Received at Both the Institution and the Foundation
- Total Market Value of Dollars in Endowment

Total Private Funds Received
(Institution and Foundation)

	FY 2002
Bridgewater	\$1,624,257
Fitchburg	\$470,474
Framingham	\$338,195
Mass College of Art	\$669,735
Mass College of Liberal Arts	\$723,495
Mass Maritime Academy	\$99,465
Salem	\$2,797,847
Westfield	\$566,369
Worcester	\$1,302,701
State College Total	\$8,592,538

Source: Institutional Budget Worksheets

Note: From FY 1997 to FY 2001 the Board collected information on donations eligible for matching funds under the Endowment Incentive Program. These eligible donations represent a subset of Total Private Funds Received. Therefore, there is no comparable trend information for this new indicator.

Total Market Value of Endowment

	FY 2002
Bridgewater	\$7,780,000
Fitchburg	\$7,068,854
Framingham	\$4,246,923
Mass College of Art	\$2,951,234
Mass College of Liberal Arts	\$4,091,764
Mass Maritime Academy	\$3,713,819
Salem	\$5,047,623
Westfield	\$2,725,139
Worcester	\$6,437,541
State College Total	\$44,062,897

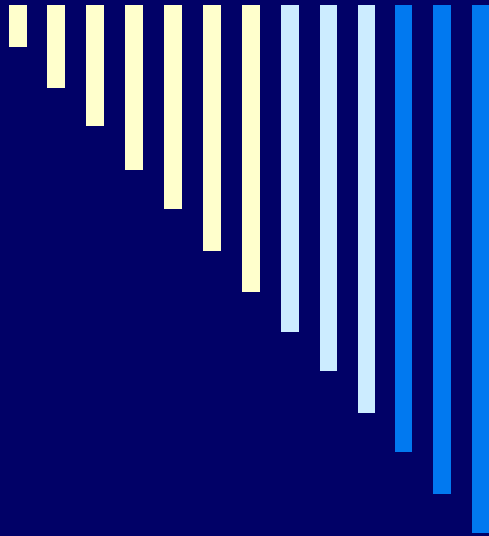
Source: Institutional Budget Worksheets

Performance Accountability Objective: Fundraising

Total Market Value of Dollars in Endowment
balance of \$4,101,352.

MCLA

The Audited Financial Statements for the MCLA Foundation show a



FY 2005 Additional Key Performance Indicators

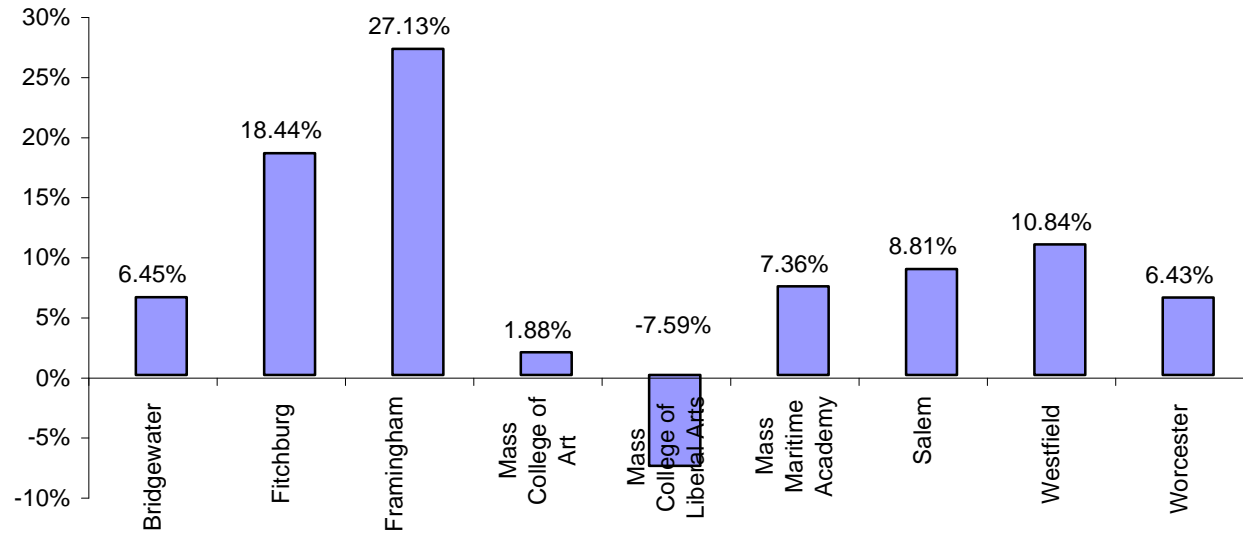
Cost Effective Use of Resources

- Financial Ratios
 - Primary Reserve
 - Return on Net Assets
 - Net Operating Revenues
 - Viability
-

Primary Reserve Ratio

	FY 2002
Bridgewater	6.45%
Fitchburg	18.44%
Framingham	27.13%
Mass College of Art	1.88%
Mass College of Liberal Arts	-7.59%
Mass Maritime Academy	7.36%
Salem	8.81%
Westfield	10.84%
Worcester	6.43%

Source: Institutional Audited Financial Statements

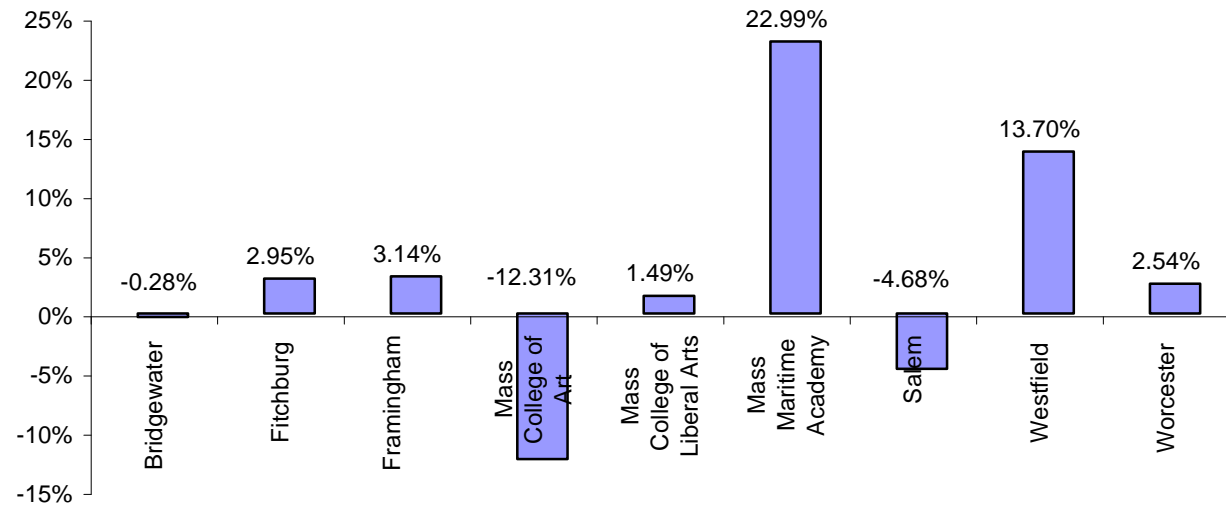


This ratio provides a snapshot of financial strength and flexibility by indicating how long the institution could operate using its expendable reserves without relying on additional net assets generated by operations. Trend analysis indicates whether an institution has increased its net worth in proportion to the rate of growth in its operating size. A negative ratio or a decreasing trend over time indicates a weakening financial condition.

Return on Net Assets Ratio

	FY 2002
Bridgewater	-0.28%
Fitchburg	2.95%
Framingham	3.14%
Mass College of Art	-12.31%
Mass College of Liberal Arts	1.49%
Mass Maritime Academy	22.99%
Salem	-4.68%
Westfield	13.70%
Worcester	2.54%

Source: Institutional Audited Financial Statements

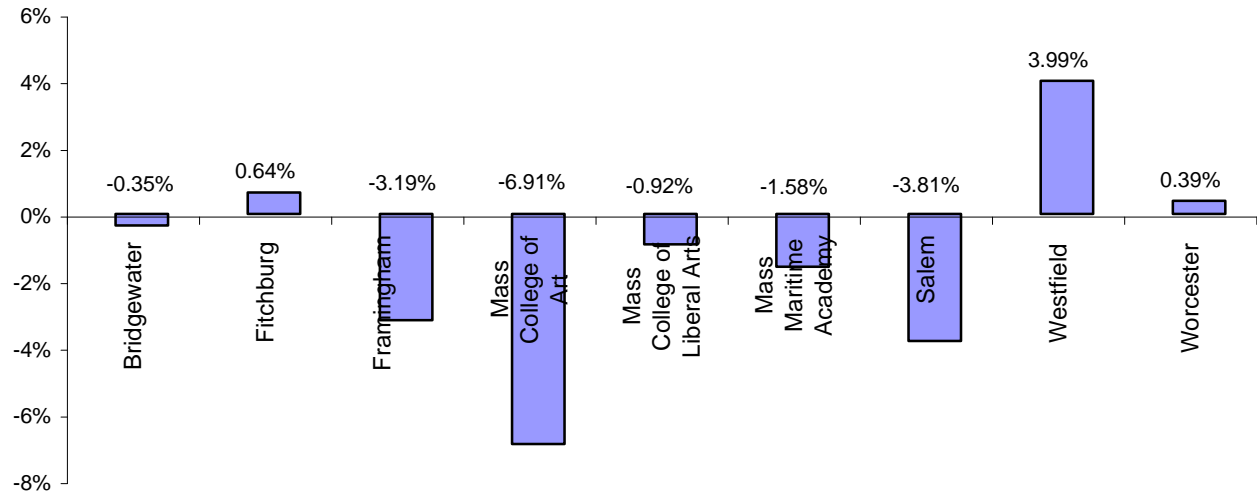


This ratio determines whether an institution's resources are growing and if it is financially better off than in previous years by measuring total economic return. As additional years are added to this table, the trend of this ratio will be important to consider: an increasing trend in the ratio indicates an increase in net assets and the institution will likely be able to set aside financial resources to strengthen its future financial flexibility.

Net Operating Revenues Ratio

	FY 2002
Bridgewater	-0.35%
Fitchburg	0.64%
Framingham	-3.19%
Mass College of Art	-6.91%
Mass College of Liberal Arts	-0.92%
Mass Maritime Academy	-1.58%
Salem	-3.81%
Westfield	3.99%
Worcester	0.39%

Source: Institutional Audited Financial Statements

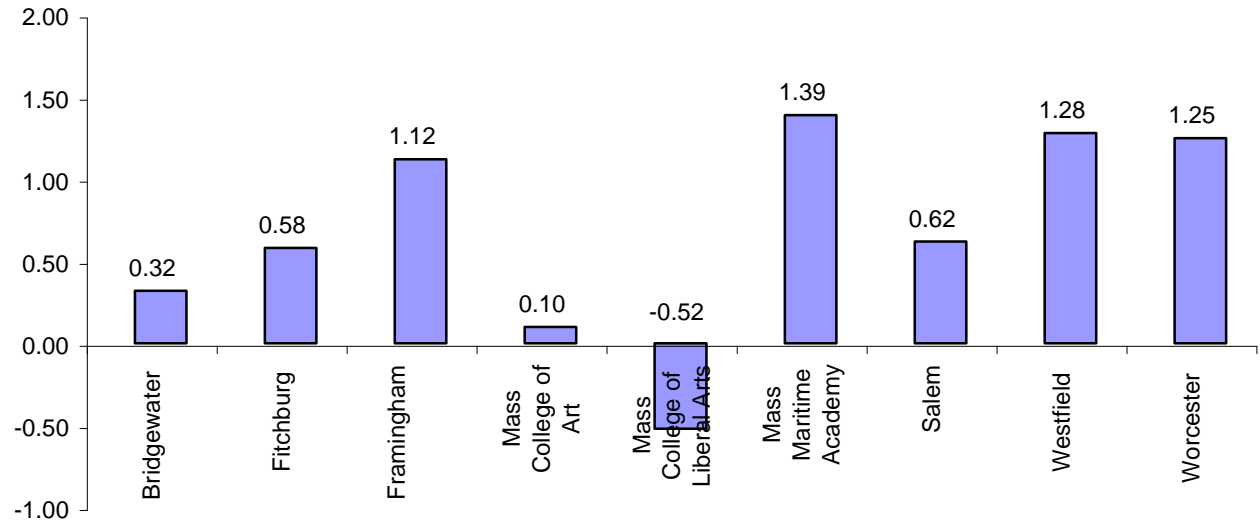


This ratio indicates whether total operating activities resulted in a surplus or deficit. This ratio measures financial performance by answering the question, "Did the organization live within its means during the year?" A positive ratio indicates that the institution experienced an operating surplus for the year and lived within its means. A small deficit in a particular year may be relatively unimportant if the institution is financially strong, is aware of the causes of the deficit and has an active plan that cures the deficit. The trend of the ratio is important as a continuing decline or a pattern of deficits should be viewed as a warning signal.

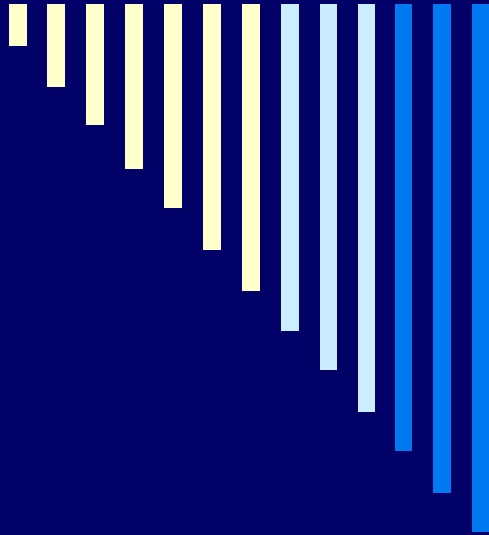
Viability Ratio

	FY 2002
Bridgewater	0.32:1
Fitchburg	0.58:1
Framingham	1.12:1
Mass College of Art	0.10:1
Mass College of Liberal Arts	-0.52:1
Mass Maritime Academy	1.39:1
Salem	0.62:1
Westfield	1.28:1
Worcester	1.25:1

Source: Institutional Audited Financial Statements



This ratio measures the availability of expendable net assets (cash and other liquid assets) to pay off its long-term debt as of the balance sheet date (fiscal year-end). A ratio of 1.00 or greater indicates an institution has sufficient expendable net assets to satisfy debt requirements. This ratio is meaningless if the institution does not have any long term debt. In addition, this ratio should be considered in conjunction with the other ratios to ensure a balance of the institution's financial, operating and programmatic objectives.



Additional Informational Indicators

(For use in the Condition of Higher Education)

Fall Undergraduate and Graduate Unduplicated Credit Headcount Fall 1990 to Fall 2002

Institution		Fall 1990	Fall 1991	Fall 1992	Fall 1993	Fall 1994	Fall 1995	Fall 1996	Fall 1997	Fall 1998	Fall 1999	Fall 2000	Fall 2001	Fall 2002	# Chg.	% Chg.	# Chg.	% Chg.
															Fall 1997 to Fall 2002	Fall 1997 to Fall 2002	Fall 1990 to Fall 2002	Fall 1990 to Fall 2002
Bridgewater State College	Undergrad	7,134	6,713	6,925	6,858	6,862	7,040	7,383	7,364	7,320	7,157	7,080	7,199	7,434	70	1.0%	300	4.2%
	Grad	1,687	1,370	1,416	1,387	1,304	1,353	1,328	1,562	1,841	1,798	1,759	1,839	2,127	565	36.2%	440	26.1%
	Total Enroll	8,821	8,083	8,341	8,245	8,166	8,393	8,711	8,926	9,161	8,955	8,839	9,038	9,561	635	7.1%	740	8.4%
Fitchburg State College	Undergrad	5,671	6,413	6,402	4,286	4,239	4,080	3,765	3,797	3,660	3,356	3,240	3,219	3,379	-418	-11.0%	-2,292	-40.4%
	Grad	553	614	636	921	1,117	1,530	1,302	2,090	2,756	2,219	2,480	1,814	1,670	-420	-20.1%	1,117	202.0%
	Total Enroll	6,224	7,027	7,038	5,207	5,356	5,610	5,067	5,887	6,416	5,575	5,720	5,033	5,049	-838	-14.2%	-1,175	-18.9%
Framingham State College*	Undergrad	5,788	5,244	4,629	4,792	4,014	4,491	4,296	4,261	4,390	3,988	4,042	4,043	3,978	-283	-6.6%	-1,810	-31.3%
	Grad	890	796	513	469	1,135	492	859	1,054	1,295	1,401	1,721	1,872	1,906	852	80.8%	1,016	114.2%
	Total Enroll	6,678	6,040	5,142	5,261	5,149	4,983	5,155	5,315	5,685	5,389	5,763	5,915	5,884	569	10.7%	-794	-11.9%
Massachusetts College of Art	Undergrad	1,754	1,732	1,702	1,930	2,057	2,000	2,104	2,078	2,199	2,163	2,217	2,146	1,934	-144	-6.9%	180	10.3%
	Grad	92	96	104	74	88	111	109	189	102	191	107	110	147	-42	-22.2%	55	59.8%
	Total Enroll	1,846	1,828	1,806	2,004	2,145	2,111	2,213	2,267	2,301	2,354	2,324	2,256	2,081	-186	-8.2%	235	12.7%
Massachusetts College of Liberal Arts	Undergrad	2,272	2,251	1,997	1,876	1,633	1,757	1,867	1,860	1,603	1,404	1,392	1,402	1,457	-403	-21.7%	-815	-35.9%
	Grad	149	134	147	107	142	123	130	127	146	128	202	212	221	94	74.0%	72	48.3%
	Total Enroll	2,421	2,385	2,144	1,983	1,775	1,880	1,997	1,987	1,749	1,532	1,594	1,614	1,678	-309	-15.6%	-743	-30.7%
Massachusetts Maritime Academy	Undergrad	598	618	735	744	737	803	723	746	784	802	829	853	888	142	19.0%	290	48.5%
	Grad	0	0	0	0	0	0	0	0	0	0	0	0	0	0	0.0%	0	0.0%
	Total Enroll	598	618	735	744	737	803	723	746	784	802	829	853	888	142	19.0%	290	48.5%
Salem State College	Undergrad	8,560	8,827	8,958	9,032	8,607	8,151	7,804	7,607	7,259	6,833	6,384	6,318	6,410	-1,197	-15.7%	-2,150	-25.1%
	Grad	1,250	948	1,012	1,011	1,075	1,377	1,376	1,275	1,418	1,240	2,200	2,031	2,380	1,105	86.7%	1,130	90.4%
	Total Enroll	9,810	9,775	9,970	10,043	9,682	9,528	9,180	8,882	8,677	8,073	8,584	8,349	8,790	-92	-1.0%	-1,020	-10.4%
Westfield State College	Undergrad	4,421	4,394	4,275	4,219	4,046	4,052	4,089	4,199	4,203	4,304	4,288	4,378	4,412	213	5.1%	-9	-0.2%
	Grad	871	824	824	759	675	705	690	750	775	712	731	775	773	23	3.1%	-98	-11.3%
	Total Enroll	5,292	5,218	5,099	4,978	4,721	4,757	4,779	4,949	4,978	5,016	5,019	5,153	5,185	236	4.8%	-107	-2.0%
Worcester State College	Undergrad	5,366	5,139	5,350	5,308	5,067	4,922	4,778	4,735	4,592	4,495	4,600	4,954	4,856	121	2.6%	-510	-9.5%
	Grad	1,069	596	609	593	721	583	590	772	738	755	735	853	712	-60	-7.8%	-357	-33.4%
	Total Enroll	6,435	5,735	5,959	5,901	5,788	5,505	5,368	5,507	5,330	5,250	5,335	5,807	5,568	61	1.1%	-867	-13.5%
State College Total	Undergrad	41,564	41,331	40,973	39,045	37,262	37,296	36,809	36,647	36,010	34,502	34,072	34,512	34,748	-1,899	-5.2%	-6,816	-16.4%
	Grad	6,561	5,378	5,261	5,321	6,257	6,274	6,384	7,819	9,071	8,444	9,935	9,506	9,936	2,117	27.1%	3,375	51.4%
	Total Enroll	48,125	46,709	46,234	44,366	43,519	43,570	43,193	44,466	45,081	42,946	44,007	44,018	44,684	218	0.5%	-3,441	-7.2%

* Framingham State College indicated that HEIRS undergraduate and graduate splits for Fall 1996 to Fall 2000 are incorrect. BHE Early Enrollment Report data for these years have been used for Framingham instead. Therefore, totals and calculations from this spreadsheet may not match totals and calculations from other single source spreadsheets.

Sources: IPEDS Fall 1990- Fall 1994; HEIRS Fall 1995- Fall 2002 (See note above from Framingham data)

Total Degrees Conferred Trends FY 1991 to FY 2002

Institution	FY 1991*	FY 1992*	FY 1993	FY 1994	FY 1995	FY 1996	FY 1997	FY 1998	FY 1999	FY 2000	FY 2001	FY 2002	# Chg.	% Chg.	# Chg.	% Chg.
													FY 1997- FY 2002	FY 1997- FY 2002	FY 1991- FY 2002	FY 1991- FY 2002
Bridgewater State College	1,444	1,444	1,283	1,529	1,360	1,275	1,377	1,486	1,518	1,508	1,473	1,542	165	12.0%	98	6.8%
Fitchburg State College	1,095	1,095	1,080	957	902	876	900	928	984	960	804	975	75	8.3%	-120	-11.0%
Framingham State College	825	825	864	961	827	772	855	810	1,027	983	1,041	1,109	254	29.7%	284	34.4%
Massachusetts College of Art	162	162	189	254	230	285	228	255	277	256	296	252	24	10.5%	90	55.6%
Massachusetts College of Liberal Arts	462	462	505	392	374	373	297	297	344	372	332	286	-11	-3.7%	-176	-38.1%
Massachusetts Maritime Academy	119	118	132	138	113	193	148	120	134	136	130	136	-12	-8.1%	17	14.3%
Salem State College	1,396	1,396	806	1,508	1,299	1,079	1,305	1,360	1,231	1,325	1,264	1,163	-142	-10.9%	-233	-16.7%
Westfield State College	891	891	581	1,137	858	838	870	987	919	994	947	952	82	9.4%	61	6.8%
Worcester State College	810	810	514	557	768	803	750	760	700	797	796	885	135	18.0%	75	9.3%
State College Total	7,204	7,203	5,954	7,433	6,731	6,494	6,730	7,003	7,134	7,331	7,083	7,300	570	8.5%	96	1.3%

Sources: IPEDS Completions FY 1991-1994; HEIRS FY 1995-2003

Note: The number of degrees awarded at some institutions is the same for both FY 1991 and FY 1992 as NCES status flag record shows that the FY1992 completions file was not submitted.

**First Year Retention (Fall to Fall)
First-Time Degree Seeking Students**

	Enrollment Status	Fall 1996	Fall 1997	Fall 1998	Fall 1999	Fall 2000	Fall 2001	Fall 1996 to Fall 2001 Percentage Point Change
		Cohort	Cohort	Cohort	Cohort	Cohort	Cohort	
Bridgewater	Total Full-time First Time Degree Seeking Students	1,147	1,159	1,127	1,075	1,242	1,138	
	# Returning to Same Institution	821	819	837	747	914	838	
	% Returning to Same Institution	71.6%	70.7%	74.3%	69.5%	73.6%	73.6%	2.1%
	# Transferring to a Different Massachusetts Public Institution	105	125	104	108	107	109	
	%Transferring to a Different Massachusetts Public Institution	9.2%	10.8%	9.2%	10.0%	8.6%	9.6%	0.4%
	# Transferring to the University of Massachusetts	10	29	18	18	15	28	
	# Transferring to a Massachusetts State College	15	15	9	10	20	13	
	# Transferring to a Massachusetts Community College	80	81	77	80	72	68	
	# Transferring to a Massachusetts Private Institutions	2	19	10	12	13	13	
	% Transferring to a Massachusetts Private Institutions	0.2%	1.6%	0.9%	1.1%	1.0%	1.1%	1.0%
	# Transferring to an Out-of-state Institution	15	10	13	15	18	17	
	% Transferring to an Out-of-state Institution	1.3%	0.9%	1.2%	1.4%	1.4%	1.5%	0.2%
# Not Continuing Their Education the Following Fall	204	186	163	193	190	161		
% Not Continuing Their Education the Following Fall	17.8%	16.0%	14.5%	18.0%	15.3%	14.1%	-3.6%	
Fitchburg	Total Full-time First Time Degree Seeking Students	455	503	497	344	448	405	
	# Returning to Same Institution	309	368	349	263	337	288	
	% Returning to Same Institution	67.9%	73.2%	70.2%	76.5%	75.2%	71.1%	3.2%
	# Transferring to a Different Massachusetts Public Institution	44	33	56	29	44	43	
	%Transferring to a Different Massachusetts Public Institution	9.7%	6.6%	11.3%	8.4%	9.8%	10.6%	0.9%
	# Transferring to the University of Massachusetts	10	5	11	7	8	6	
	# Transferring to a Massachusetts State College	6	4	6	5	9	11	
	# Transferring to a Massachusetts Community College	28	24	39	17	27	26	
	# Transferring to a Massachusetts Private Institutions	0	0	0	0	0	0	
	% Transferring to a Massachusetts Private Institutions	0.0%	0.0%	0.0%	0.0%	0.0%	0.0%	0.0%
	# Transferring to an Out-of-state Institution	0	0	0	0	0	0	
	% Transferring to an Out-of-state Institution	0.0%	0.0%	0.0%	0.0%	0.0%	0.0%	0.0%
# Not Continuing Their Education the Following Fall	102	102	92	52	67	74		
% Not Continuing Their Education the Following Fall	22.4%	20.3%	18.5%	15.1%	15.0%	18.3%	-4.1%	
Framingham	Total Full-time First Time Degree Seeking Students	616	562	573	540	589	647	
	# Returning to Same Institution	394	378	400	370	427	441	
	% Returning to Same Institution	64.0%	67.3%	69.8%	68.5%	72.5%	68.2%	4.2%
	# Transferring to a Different Massachusetts Public Institution	73	55	61	58	68	72	
	%Transferring to a Different Massachusetts Public Institution	11.9%	9.8%	10.6%	10.7%	11.5%	11.1%	-0.7%
	# Transferring to the University of Massachusetts	11	12	14	14	13	7	
	# Transferring to a Massachusetts State College	13	12	15	14	22	14	
	# Transferring to a Massachusetts Community College	49	31	32	30	33	51	
	# Transferring to a Massachusetts Private Institutions	0	0	0	0	1	0	
	% Transferring to a Massachusetts Private Institutions	0.0%	0.0%	0.0%	0.0%	0.2%	0.0%	0.0%
	# Transferring to an Out-of-state Institution	0	0	0	0	0	0	
	% Transferring to an Out-of-state Institution	0.0%	0.0%	0.0%	0.0%	0.0%	0.0%	0.0%
# Not Continuing Their Education the Following Fall	149	129	112	112	93	134		
% Not Continuing Their Education the Following Fall	24.2%	23.0%	19.5%	20.7%	15.8%	20.7%	-3.5%	

**First Year Retention (Fall to Fall)
First-Time Degree Seeking Students**

	Enrollment Status	Fall 1996	Fall 1997	Fall 1998	Fall 1999	Fall 2000	Fall 2001	Fall 1996 to Fall 2001 Percentage Point Change
		Cohort	Cohort	Cohort	Cohort	Cohort	Cohort	
Mass College of Art	Total Full-time First Time Degree Seeking Students	208	199	214	244	229	232	
	# Returning to Same Institution	178	167	192	209	192	183	
	% Returning to Same Institution	85.6%	83.9%	89.7%	85.7%	83.8%	78.9%	-6.7%
	# Transferring to a Different Massachusetts Public Institution	2	2	3	4	4	5	
	%Transferring to a Different Massachusetts Public Institution	1.0%	1.0%	1.4%	1.6%	1.7%	2.2%	1.2%
	# Transferring to the University of Massachusetts	1	1	1	2	2	4	
	# Transferring to a Massachusetts State College	0	0	0	0	0	0	
	# Transferring to a Massachusetts Community College	1	1	2	2	2	1	
	# Transferring to a Massachusetts Private Institutions	0	0	0	3	1	5	
	% Transferring to a Massachusetts Private Institutions	0.0%	0.0%	0.0%	1.2%	0.4%	2.2%	2.2%
	# Transferring to an Out-of-state Institution	3	5	0	6	6	3	
% Transferring to an Out-of-state Institution	1.4%	2.5%	0.0%	2.5%	2.6%	1.3%	-0.1%	
# Not Continuing Their Education the Following Fall	25	25	19	22	26	36		
% Not Continuing Their Education the Following Fall	12.0%	12.6%	8.9%	9.0%	11.4%	15.5%	3.5%	
Mass College of Liberal Arts	Total Full-time First Time Degree Seeking Students	216	176	160	160	163	198	
	# Returning to Same Institution	147	123	118	121	114	135	
	% Returning to Same Institution	68.1%	69.9%	73.8%	75.6%	69.9%	68.2%	0.1%
	# Transferring to a Different Massachusetts Public Institution	19	19	12	10	15	21	
	%Transferring to a Different Massachusetts Public Institution	8.8%	10.8%	7.5%	6.3%	9.2%	10.6%	1.8%
	# Transferring to the University of Massachusetts	1	6	3	2	0	3	
	# Transferring to a Massachusetts State College	4	4	2	5	8	9	
	# Transferring to a Massachusetts Community College	14	9	7	3	7	9	
	# Transferring to a Massachusetts Private Institutions	2	3	1	1	3	4	
	% Transferring to a Massachusetts Private Institutions	0.9%	1.7%	0.6%	0.6%	1.8%	2.0%	1.1%
	# Transferring to an Out-of-state Institution	11	7	5	5	11	8	
% Transferring to an Out-of-state Institution	5.1%	4.0%	3.1%	3.1%	6.7%	4.0%	-1.1%	
# Not Continuing Their Education the Following Fall	37	24	24	23	20	30		
% Not Continuing Their Education the Following Fall	17.1%	13.6%	15.0%	14.4%	12.3%	15.2%	-2.0%	
Mass Maritime Academy	Total Full-time First Time Degree Seeking Students	167	175	198	172	190	213	
	# Returning to Same Institution	136	133	157	147	159	181	
	% Returning to Same Institution	81.4%	76.0%	79.3%	85.5%	83.7%	85.0%	3.5%
	# Transferring to a Different Massachusetts Public Institution	13	17	9	7	6	8	
	%Transferring to a Different Massachusetts Public Institution	7.8%	9.7%	4.5%	4.1%	3.2%	3.8%	-4.0%
	# Transferring to the University of Massachusetts	2	4	3	2	3	1	
	# Transferring to a Massachusetts State College	2	1	4	0	1	4	
	# Transferring to a Massachusetts Community College	9	12	2	5	2	3	
	# Transferring to a Massachusetts Private Institutions	0	0	0	0	0	0	
	% Transferring to a Massachusetts Private Institutions	0.0%	0.0%	0.0%	0.0%	0.0%	0.0%	0.0%
	# Transferring to an Out-of-state Institution	0	0	0	0	0	0	
% Transferring to an Out-of-state Institution	0.0%	0.0%	0.0%	0.0%	0.0%	0.0%	0.0%	
# Not Continuing Their Education the Following Fall	18	25	32	18	25	24		
% Not Continuing Their Education the Following Fall	10.8%	14.3%	16.2%	10.5%	13.2%	11.3%	0.5%	

**First Year Retention (Fall to Fall)
First-Time Degree Seeking Students**

	Enrollment Status	Fall 1996	Fall 1997	Fall 1998	Fall 1999	Fall 2000	Fall 2001	Fall 1996 to Fall 2001 Percentage Point Change
		Cohort	Cohort	Cohort	Cohort	Cohort	Cohort	
Salem	Total Full-time First Time Degree Seeking Students	747	718	746	486	585	825	
	# Returning to Same Institution	499	494	557	360	402	566	
	% Returning to Same Institution	66.8%	68.8%	74.7%	74.1%	68.7%	68.6%	1.8%
	# Transferring to a Different Massachusetts Public Institution	76	63	54	40	66	63	
	%Transferring to a Different Massachusetts Public Institution	10.2%	8.8%	7.2%	8.2%	11.3%	7.6%	-2.5%
	# Transferring to the University of Massachusetts	15	7	11	6	14	15	
	# Transferring to a Massachusetts State College	15	11	8	9	10	20	
	# Transferring to a Massachusetts Community College	46	45	35	25	42	28	
	# Transferring to a Massachusetts Private Institutions	1	2	4	3	5	4	
	% Transferring to a Massachusetts Private Institutions	0.1%	0.3%	0.5%	0.6%	0.9%	0.5%	0.4%
	# Transferring to an Out-of-state Institution	8	8	9	6	7	14	
	% Transferring to an Out-of-state Institution	1.1%	1.1%	1.2%	1.2%	1.2%	1.7%	0.6%
# Not Continuing Their Education the Following Fall	163	151	122	77	105	178		
% Not Continuing Their Education the Following Fall	21.8%	21.0%	16.4%	15.8%	17.9%	21.6%	-0.2%	
Westfield	Total Full-time First Time Degree Seeking Students	755	844	836	899	885	969	
	# Returning to Same Institution	578	632	613	663	668	748	
	% Returning to Same Institution	76.6%	74.9%	73.3%	73.7%	75.5%	77.2%	0.6%
	# Transferring to a Different Massachusetts Public Institution	83	94	114	117	115	105	
	%Transferring to a Different Massachusetts Public Institution	11.0%	11.1%	13.6%	13.0%	13.0%	10.8%	-0.2%
	# Transferring to the University of Massachusetts	10	26	27	21	17	20	
	# Transferring to a Massachusetts State College	24	37	32	33	40	38	
	# Transferring to a Massachusetts Community College	49	31	55	63	58	47	
	# Transferring to a Massachusetts Private Institutions	4	9	6	7	9	15	
	% Transferring to a Massachusetts Private Institutions	0.5%	1.1%	0.7%	0.8%	1.0%	1.5%	1.0%
	# Transferring to an Out-of-state Institution	12	15	13	15	17	20	
	% Transferring to an Out-of-state Institution	1.6%	1.8%	1.6%	1.7%	1.9%	2.1%	0.5%
# Not Continuing Their Education the Following Fall	78	94	90	97	76	81		
% Not Continuing Their Education the Following Fall	10.3%	11.1%	10.8%	10.8%	8.6%	8.4%	-2.0%	
Worcester	Total Full-time First Time Degree Seeking Students	202	364	395	379	375	460	
	# Returning to Same Institution	164	291	302	279	276	331	
	% Returning to Same Institution	81.2%	79.9%	76.5%	73.6%	73.6%	72.0%	-9.2%
	# Transferring to a Different Massachusetts Public Institution	10	4	27	25	24	34	
	%Transferring to a Different Massachusetts Public Institution	5.0%	1.1%	6.8%	6.6%	6.4%	7.4%	2.4%
	# Transferring to the University of Massachusetts	5	0	11	4	6	10	
	# Transferring to a Massachusetts State College	2	1	3	8	8	6	
	# Transferring to a Massachusetts Community College	3	3	13	13	10	18	
	# Transferring to a Massachusetts Private Institutions	0	1	5	1	3	4	
	% Transferring to a Massachusetts Private Institutions	0.0%	0.3%	1.3%	0.3%	0.8%	0.9%	0.9%
	# Transferring to an Out-of-state Institution	0	2	1	18	3	4	
	% Transferring to an Out-of-state Institution	0.0%	0.5%	0.3%	4.7%	0.8%	0.9%	0.9%
# Not Continuing Their Education the Following Fall	28	66	60	56	69	87		
% Not Continuing Their Education the Following Fall	13.9%	18.1%	15.2%	14.8%	18.4%	18.9%	5.1%	

**First Year Retention (Fall to Fall)
First-Time Degree Seeking Students**

	Enrollment Status	Fall 1996	Fall 1997	Fall 1998	Fall 1999	Fall 2000	Fall 2001	Fall 1996 to Fall 2001 Percentage Point Change
		Cohort	Cohort	Cohort	Cohort	Cohort	Cohort	
State Colleges	Total Full-time First Time Degree Seeking Students	4,513	4,700	4,746	4,299	4,706	5,087	
	# Returning to Same Institution	3,226	3,405	3,525	3,159	3,489	3,711	
	% Returning to Same Institution	71.5%	72.4%	74.3%	73.5%	74.1%	73.0%	1.5%
	# Transferring to a Different Massachusetts Public Institution	425	412	440	398	449	460	
	% Transferring to a Different Massachusetts Public Institution	9.4%	8.8%	9.3%	9.3%	9.5%	9.0%	-0.4%
	# Transferring to the University of Massachusetts	65	90	99	76	78	94	
	# Transferring to a Massachusetts State College	81	85	79	84	118	115	
	# Transferring to a Massachusetts Community College	279	237	262	238	253	251	
	# Transferring to a Massachusetts Private Institutions	9	34	26	27	35	45	
	% Transferring to a Massachusetts Private Institutions	0.2%	0.7%	0.5%	0.6%	0.7%	0.9%	0.7%
	# Transferring to an Out-of-state Institution	49	47	41	65	62	66	
	% Transferring to an Out-of-state Institution	1.1%	1.0%	0.9%	1.5%	1.3%	1.3%	0.2%
	# Not Continuing Their Education the Following Fall	804	802	714	650	671	805	
% Not Continuing Their Education the Following Fall	17.8%	17.1%	15.0%	15.1%	14.3%	15.8%	-2.0%	

Source: HEIRS II Student File; National Student Clearinghouse

Note: Cohort Identification: HEIRS II Fall Term Credit Student Unit Record File. Data Elements: **Student Type at Current Registration**=New and **New Student Type**= Degree Seeking First-time freshman. Fulltime = enrolled 12>credits; Part-time = enrolled <12 credits. Adjust cohort (if necessary) to eliminate students from initial cohort who graduated prior to next fall term (if any) and would not be expected to return. # returning derived from matching Student SSN and Student ID in the following fall term HEIRS II Student file. Rate (%) = #returned/# in cohort.

Cohort Students Not Continuing their Education the Following Fall were not found in either HEIRS II or the National Student Clearinghouse database (which maintains enrollment data for 90% of colleges at any level in the United States.)

Tuition at Massachusetts Public Colleges and University

	1988/89	1989/90	1990/91	1991/92	1992/93	1993/94	1994/95	1995/96	1996/97	1997/98	1998/99	1999/00	2000/01	2001/02	2002/03	# and % Change 1997 -1998 to 2002 - 2003	
UMass Amherst	\$1,404	\$1,512	\$1,935	\$2,052	\$2,134	\$2,220	\$2,220	\$2,220	\$2,109	\$2,004	\$1,904	\$1,714	\$1,714	\$1,714	\$1,714	-\$290	-14.5%
UMass Boston	\$1,404	\$1,512	\$1,935	\$2,052	\$2,134	\$2,220	\$2,220	\$2,220	\$2,109	\$2,004	\$1,904	\$1,714	\$1,714	\$1,714	\$1,714	-\$290	-14.5%
UMass Dartmouth	\$1,170	\$1,260	\$1,600	\$1,698	\$1,766	\$1,837	\$1,836	\$1,836	\$1,744	\$1,657	\$1,574	\$1,417	\$1,417	\$1,417	\$1,417	-\$240	-14.5%
UMass Lowell	\$1,170	\$1,260	\$1,675	\$1,776	\$1,847	\$1,884	\$1,884	\$1,884	\$1,790	\$1,700	\$1,615	\$1,454	\$1,454	\$1,454	\$1,454	-\$246	-14.5%
Bridgewater	\$1,014	\$1,092	\$1,250	\$1,326	\$1,380	\$1,408	\$1,408	\$1,408	\$1,338	\$1,270	\$1,150	\$1,030	\$970	\$910	\$910	-\$360	-28.3%
Fitchburg	\$1,014	\$1,092	\$1,250	\$1,326	\$1,380	\$1,408	\$1,408	\$1,408	\$1,338	\$1,270	\$1,210	\$1,090	\$1,030	\$970	\$970	-\$300	-23.6%
Framingham	\$1,014	\$1,092	\$1,250	\$1,326	\$1,380	\$1,408	\$1,408	\$1,408	\$1,338	\$1,270	\$1,210	\$1,090	\$1,030	\$970	\$970	-\$300	-23.6%
MassArt	\$1,044	\$1,128	\$1,295	\$1,374	\$1,434	\$1,463	\$1,463	\$1,463	\$1,390	\$1,320	\$1,260	\$1,140	\$1,090	\$1,030	\$1,030	-\$290	-22.0%
MCLA	\$1,014	\$1,092	\$1,250	\$1,326	\$1,380	\$1,408	\$1,408	\$1,408	\$1,338	\$1,270	\$1,210	\$1,090	\$1,090	\$1,030	\$1,030	-\$240	-18.9%
Mass Maritime	\$1,044	\$1,128	\$1,295	\$1,374	\$1,434	\$1,463	\$1,463	\$1,463	\$1,390	\$1,320	\$1,260	\$1,140	\$1,090	\$1,030	\$1,030	-\$290	-22.0%
Salem	\$1,014	\$1,092	\$1,250	\$1,326	\$1,380	\$1,408	\$1,408	\$1,408	\$1,338	\$1,270	\$1,150	\$1,030	\$970	\$910	\$910	-\$360	-28.3%
Westfield	\$1,014	\$1,092	\$1,250	\$1,326	\$1,380	\$1,408	\$1,408	\$1,408	\$1,338	\$1,270	\$1,210	\$1,090	\$1,030	\$970	\$970	-\$300	-23.6%
Worcester	\$1,014	\$1,092	\$1,250	\$1,326	\$1,380	\$1,408	\$1,408	\$1,408	\$1,338	\$1,270	\$1,210	\$1,090	\$1,030	\$970	\$970	-\$300	-23.6%
Berkshire	\$768	\$828	\$950	\$950	\$990	\$1,026	\$1,140	\$1,140	\$1,080	\$1,020	\$960	\$870	\$780	\$780	\$780	-\$240	-23.5%
Bristol	\$768	\$828	\$950	\$1,008	\$1,050	\$1,080	\$1,200	\$1,200	\$1,080	\$1,020	\$900	\$810	\$720	\$720	\$720	-\$300	-29.4%
Bunker Hill	\$768	\$828	\$950	\$1,008	\$1,050	\$1,080	\$1,200	\$1,200	\$1,080	\$1,020	\$900	\$810	\$720	\$720	\$720	-\$300	-29.4%
Cape Cod	\$768	\$828	\$950	\$1,008	\$1,050	\$1,080	\$1,200	\$1,200	\$1,080	\$1,020	\$930	\$840	\$720	\$720	\$720	-\$300	-29.4%
Greenfield	\$768	\$828	\$950	\$950	\$990	\$1,026	\$1,140	\$1,140	\$1,080	\$1,020	\$960	\$870	\$780	\$780	\$780	-\$240	-23.5%
Holyoke	\$768	\$828	\$950	\$1,008	\$1,050	\$1,080	\$1,200	\$1,200	\$1,080	\$1,020	\$900	\$810	\$720	\$720	\$720	-\$300	-29.4%
Massachusetts Bay	\$768	\$828	\$950	\$1,008	\$1,050	\$1,080	\$1,200	\$1,200	\$1,080	\$1,020	\$930	\$840	\$720	\$720	\$720	-\$300	-29.4%
Massasoit	\$768	\$828	\$950	\$1,008	\$1,050	\$1,080	\$1,200	\$1,200	\$1,080	\$1,020	\$930	\$840	\$720	\$720	\$720	-\$300	-29.4%
Middlesex	\$768	\$828	\$950	\$1,008	\$1,050	\$1,080	\$1,200	\$1,200	\$1,080	\$1,020	\$900	\$810	\$720	\$720	\$720	-\$300	-29.4%
Mount Wachusett	\$768	\$828	\$950	\$1,008	\$1,050	\$1,080	\$1,200	\$1,200	\$1,080	\$1,020	\$960	\$870	\$750	\$750	\$750	-\$270	-26.5%
North Shore	\$768	\$828	\$950	\$1,008	\$1,050	\$1,080	\$1,200	\$1,200	\$1,080	\$1,020	\$900	\$810	\$750	\$750	\$750	-\$270	-26.5%
Northern Essex	\$768	\$828	\$950	\$1,008	\$1,050	\$1,080	\$1,200	\$1,200	\$1,080	\$1,020	\$930	\$840	\$750	\$750	\$750	-\$270	-26.5%
Quinsigamond	\$768	\$828	\$950	\$1,008	\$1,056	\$1,080	\$1,200	\$1,200	\$1,080	\$1,020	\$900	\$810	\$720	\$720	\$720	-\$300	-29.4%
Roxbury	\$768	\$828	\$950	\$1,008	\$1,050	\$1,080	\$1,200	\$1,200	\$1,080	\$1,020	\$930	\$840	\$780	\$780	\$780	-\$240	-23.5%
STCC	\$768	\$828	\$950	\$1,008	\$1,050	\$1,080	\$1,200	\$1,200	\$1,080	\$1,020	\$930	\$840	\$750	\$750	\$750	-\$270	-26.5%
Weighted Average UMass	\$1,326	\$1,426	\$1,837	\$1,948	\$2,031	\$2,108	\$2,109	\$2,106	\$2,004	\$1,903	\$1,808	\$1,629	\$1,626	\$1,624	\$1,619	-\$284	-14.9%
Weighted Average State																	
Colleges	\$1,016	\$1,094	\$1,253	\$1,329	\$1,384	\$1,412	\$1,412	\$1,413	\$1,342	\$1,274	\$1,190	\$1,071	\$1,014	\$955	\$954	-\$320	-25.1%
Weighted Average																	
Community Colleges	\$768	\$828	\$950	\$1,004	\$1,046	\$1,076	\$1,196	\$1,196	\$1,080	\$1,020	\$919	\$829	\$735	\$734	\$734	-\$286	-28.0%
Weighted Average All																	
Colleges and University	\$1,054	\$1,134	\$1,371	\$1,445	\$1,493	\$1,536	\$1,601	\$1,571	\$1,478	\$1,388	\$1,293	\$1,166	\$1,111	\$1,091	\$1,082	-\$306	-22.0%

Annual Fees at Massachusetts Public Colleges and University
(Based on Fall Fee Rates)

	1988/89	1989/90	1990/91	1991/92	1992/93	1993/94	1994/95	1995/96	1996/97	1997/98	1998/99	1999/00	2000/01	2001/02	2002/03	# and % Change 1997 -1998 to 2002 - 2003		
UMass Amherst	\$918	\$1,269	\$1,794	\$2,570	\$2,663	\$2,906	\$3,247	\$3,294	\$3,304	\$3,325	\$3,325	\$3,498	\$3,498	\$3,498	\$4,768	\$1,443	43.4%	
UMass Boston	\$441	\$684	\$1,111	\$1,883	\$1,959	\$2,083	\$2,078	\$2,180	\$2,234	\$2,288	\$2,288	\$2,508	\$2,508	\$2,508	\$3,508	\$1,220	53.3%	
UMass Dartmouth	\$330	\$531	\$830	\$1,368	\$1,427	\$1,775	\$1,999	\$2,286	\$2,407	\$2,597	\$2,597	\$2,712	\$2,712	\$2,712	\$3,712	\$1,115	42.9%	
UMass Lowell	\$1,194	\$1,532	\$1,921	\$2,561	\$2,616	\$2,668	\$2,721	\$2,722	\$2,722	\$2,722	\$2,722	\$2,801	\$2,801	\$2,801	\$3,759	\$1,037	38.1%	
Bridgewater	\$438	\$782	\$1,212	\$1,558	\$2,013	\$2,013	\$2,062	\$2,102	\$2,102	\$2,033	\$2,033	\$2,033	\$1,913	\$1,913	\$2,825	\$792	39.0%	
Fitchburg	\$418	\$821	\$1,321	\$1,821	\$1,839	\$1,839	\$1,826	\$1,908	\$1,992	\$2,026	\$1,998	\$1,928	\$1,988	\$2,018	\$2,718	\$692	34.2%	
Framingham	\$436	\$870	\$1,280	\$1,575	\$1,637	\$1,672	\$1,820	\$1,900	\$1,890	\$1,880	\$1,860	\$1,800	\$1,800	\$1,800	\$2,364	\$484	25.7%	
MassArt	\$519	\$694	\$1,569	\$2,194	\$2,284	\$2,404	\$2,520	\$2,644	\$2,644	\$2,644	\$2,644	\$2,668	\$2,788	\$3,038	\$3,938	\$1,294	48.9%	
MCLA	\$667	\$874	\$1,215	\$1,890	\$1,963	\$2,083	\$2,147	\$2,147	\$2,147	\$2,167	\$2,167	\$2,267	\$2,267	\$2,467	\$3,167	\$1,000	46.1%	
Mass Maritime	\$269	\$270	\$697	\$1,447	\$1,473	\$1,476	\$1,561	\$1,657	\$1,784	\$1,784	\$1,784	\$1,784	\$1,783	\$1,883	\$2,633	\$849	47.6%	
Salem	\$360	\$360	\$730	\$1,630	\$1,693	\$1,790	\$1,790	\$2,000	\$2,006	\$1,987	\$1,928	\$1,928	\$2,128	\$2,128	\$3,028	\$1,041	52.4%	
Westfield	\$398	\$500	\$1,015	\$1,495	\$1,645	\$1,660	\$1,745	\$1,785	\$1,824	\$1,824	\$1,824	\$1,884	\$1,886	\$1,986	\$2,785	\$961	52.7%	
Worcester	\$272	\$457	\$852	\$1,152	\$1,152	\$1,196	\$1,245	\$1,345	\$1,345	\$1,345	\$1,345	\$1,368	\$1,478	\$1,603	\$2,303	\$958	71.2%	
Berkshire	\$270	\$360	\$720	\$908	\$817	\$905	\$1,260	\$1,410	\$1,620	\$1,620	\$1,620	\$1,620	\$1,650	\$1,710	\$1,920	\$2,310	\$690	42.6%
Bristol	\$190	\$260	\$510	\$990	\$891	\$999	\$1,260	\$1,260	\$1,380	\$1,320	\$1,320	\$1,260	\$1,350	\$1,440	\$2,100	\$780	59.1%	
Bunker Hill	\$144	\$276	\$376	\$478	\$844	\$945	\$1,050	\$1,200	\$1,320	\$1,320	\$1,290	\$1,230	\$1,230	\$1,230	\$1,680	\$360	27.3%	
Cape Cod	\$334	\$514	\$547	\$779	\$815	\$975	\$1,032	\$1,128	\$1,530	\$1,515	\$1,432	\$1,440	\$1,590	\$1,740	\$2,460	\$945	62.4%	
Greenfield	\$340	\$415	\$603	\$1,016	\$1,026	\$1,218	\$1,338	\$1,318	\$1,382	\$1,367	\$1,367	\$1,367	\$1,517	\$1,727	\$2,237	\$870	63.6%	
Holyoke	\$425	\$412	\$592	\$1,062	\$1,332	\$1,182	\$1,272	\$1,332	\$1,452	\$1,456	\$1,426	\$1,366	\$1,456	\$1,716	\$2,076	\$620	42.6%	
Massachusetts Bay	\$330	\$390	\$585	\$569	\$459	\$459	\$1,110	\$1,290	\$1,290	\$1,290	\$1,230	\$1,275	\$1,170	\$1,170	\$1,240	\$2,150	\$920	74.8%
Massasoit	\$294	\$480	\$705	\$930	\$837	\$1,161	\$1,290	\$1,290	\$1,290	\$1,260	\$1,230	\$1,230	\$1,320	\$1,320	\$1,920	\$660	52.4%	
Middlesex	\$512	\$512	\$522	\$1,026	\$1,026	\$1,500	\$1,620	\$1,620	\$1,670	\$1,610	\$1,550	\$1,550	\$1,640	\$1,790	\$2,300	\$690	42.9%	
Mount Wachusett	\$399	\$584	\$979	\$1,560	\$1,515	\$1,461	\$1,800	\$1,950	\$1,980	\$1,930	\$1,840	\$1,790	\$1,820	\$1,940	\$2,660	\$730	37.8%	
North Shore	\$227	\$377	\$529	\$994	\$1,050	\$1,200	\$1,290	\$1,290	\$1,410	\$1,380	\$1,320	\$1,320	\$1,440	\$1,740	\$2,340	\$960	69.6%	
Northern Essex	\$375	\$420	\$480	\$810	\$900	\$975	\$1,230	\$1,230	\$1,470	\$1,425	\$1,380	\$1,380	\$1,440	\$1,530	\$1,920	\$495	34.7%	
Quinsigamond	\$262	\$312	\$487	\$1,012	\$958	\$974	\$1,054	\$1,054	\$1,290	\$1,230	\$1,170	\$1,170	\$1,170	\$1,170	\$2,010	\$780	63.4%	
Roxbury	\$201	\$198	\$198	\$198	\$350	\$840	\$1,095	\$1,200	\$1,320	\$1,260	\$1,260	\$1,230	\$1,320	\$1,320	\$1,670	\$410	32.5%	
STCC	\$258	\$338	\$586	\$806	\$848	\$1,396	\$1,430	\$1,430	\$1,550	\$1,490	\$1,430	\$1,430	\$1,434	\$1,684	\$1,984	\$494	33.2%	
Weighted Average UMass	\$816	\$1,124	\$1,570	\$2,286	\$2,356	\$2,547	\$2,764	\$2,848	\$2,888	\$2,925	\$2,919	\$3,077	\$3,072	\$3,069	\$4,179	\$1,254	42.9%	
Weighted Average State Colleges	\$409	\$627	\$1,071	\$1,596	\$1,726	\$1,769	\$1,825	\$1,921	\$1,945	\$1,918	\$1,912	\$1,913	\$1,947	\$1,999	\$2,789	\$871	45.4%	
Weighted Average Community Colleges	\$307	\$395	\$565	\$894	\$919	\$1,095	\$1,278	\$1,324	\$1,449	\$1,407	\$1,378	\$1,353	\$1,418	\$1,539	\$2,099	\$692	49.2%	
Weighted Average All Colleges and University	\$535	\$744	\$1,085	\$1,604	\$1,657	\$1,795	\$1,988	\$2,014	\$2,093	\$2,059	\$2,044	\$2,091	\$2,119	\$2,172	\$2,959	\$900	43.7%	

Tuition and Fees at Massachusetts Public Colleges and University
(Based on Fall Fee Rates)

	1988/89	1989/90	1990/91	1991/92	1992/93	1993/94	1994/95	1995/96	1996/97	1997/98	1998/99	1999/00	2000/01	2001/02	2002/03	# and % Change 1997 -1998 to 2002
UMass Amherst	\$2,322	\$2,781	\$3,729	\$4,622	\$4,797	\$5,126	\$5,467	\$5,514	\$5,413	\$5,329	\$5,229	\$5,212	\$5,212	\$5,212	\$6,482	\$1,153 21.6%
UMass Boston	\$1,845	\$2,196	\$3,046	\$3,935	\$4,093	\$4,303	\$4,298	\$4,400	\$4,343	\$4,292	\$4,192	\$4,222	\$4,222	\$4,222	\$5,222	\$930 21.7%
UMass Dartmouth	\$1,500	\$1,791	\$2,430	\$3,066	\$3,193	\$3,612	\$3,835	\$4,122	\$4,151	\$4,254	\$4,171	\$4,129	\$4,129	\$4,129	\$5,129	\$875 20.6%
UMass Lowell	\$2,364	\$2,792	\$3,596	\$4,337	\$4,463	\$4,552	\$4,605	\$4,606	\$4,512	\$4,422	\$4,337	\$4,255	\$4,255	\$4,255	\$5,213	\$791 17.9%
Bridgewater	\$1,452	\$1,874	\$2,462	\$2,884	\$3,393	\$3,421	\$3,470	\$3,510	\$3,440	\$3,303	\$3,183	\$3,063	\$2,883	\$2,823	\$3,735	\$432 13.1%
Fitchburg	\$1,432	\$1,913	\$2,571	\$3,147	\$3,219	\$3,247	\$3,234	\$3,316	\$3,330	\$3,296	\$3,208	\$3,018	\$3,018	\$2,988	\$3,688	\$392 11.9%
Framingham	\$1,450	\$1,962	\$2,530	\$2,901	\$3,017	\$3,080	\$3,228	\$3,308	\$3,228	\$3,150	\$3,070	\$2,890	\$2,830	\$2,770	\$3,334	\$184 5.8%
MassArt	\$1,563	\$1,822	\$2,864	\$3,568	\$3,718	\$3,867	\$3,983	\$4,107	\$4,034	\$3,964	\$3,904	\$3,808	\$3,878	\$4,068	\$4,968	\$1,004 25.3%
MCLA	\$1,681	\$1,966	\$2,465	\$3,216	\$3,343	\$3,491	\$3,555	\$3,555	\$3,485	\$3,437	\$3,377	\$3,357	\$3,357	\$3,497	\$4,197	\$760 22.1%
Mass Maritime	\$1,313	\$1,398	\$1,992	\$2,821	\$2,907	\$2,939	\$3,024	\$3,120	\$3,174	\$3,104	\$3,044	\$2,924	\$2,873	\$2,913	\$3,663	\$559 18.0%
Salem	\$1,374	\$1,452	\$1,980	\$2,956	\$3,073	\$3,198	\$3,198	\$3,408	\$3,344	\$3,257	\$3,078	\$2,958	\$3,098	\$3,038	\$3,938	\$681 20.9%
Westfield	\$1,412	\$1,592	\$2,265	\$2,821	\$3,025	\$3,068	\$3,153	\$3,193	\$3,162	\$3,094	\$3,034	\$2,974	\$2,916	\$2,956	\$3,755	\$661 21.4%
Worcester	\$1,286	\$1,549	\$2,102	\$2,478	\$2,532	\$2,604	\$2,653	\$2,753	\$2,683	\$2,615	\$2,555	\$2,458	\$2,508	\$2,573	\$3,273	\$658 25.2%
Berkshire	\$1,038	\$1,188	\$1,670	\$1,858	\$1,807	\$1,931	\$2,400	\$2,550	\$2,700	\$2,640	\$2,580	\$2,520	\$2,490	\$2,700	\$3,090	\$450 17.0%
Bristol	\$958	\$1,088	\$1,460	\$1,998	\$1,941	\$2,079	\$2,460	\$2,460	\$2,460	\$2,340	\$2,220	\$2,070	\$2,070	\$2,160	\$2,820	\$480 20.5%
Bunker Hill	\$912	\$1,104	\$1,326	\$1,486	\$1,894	\$2,025	\$2,250	\$2,400	\$2,400	\$2,340	\$2,190	\$2,040	\$1,950	\$1,950	\$2,400	\$60 2.6%
Cape Cod	\$1,102	\$1,342	\$1,497	\$1,787	\$1,865	\$2,055	\$2,232	\$2,328	\$2,610	\$2,535	\$2,362	\$2,280	\$2,310	\$2,460	\$3,180	\$645 25.4%
Greenfield	\$1,108	\$1,243	\$1,553	\$1,966	\$2,016	\$2,244	\$2,478	\$2,458	\$2,462	\$2,387	\$2,327	\$2,237	\$2,297	\$2,507	\$3,017	\$630 26.4%
Holyoke	\$1,193	\$1,240	\$1,542	\$2,070	\$2,382	\$2,262	\$2,472	\$2,532	\$2,532	\$2,476	\$2,326	\$2,176	\$2,176	\$2,436	\$2,796	\$320 12.9%
Massachusetts Bay	\$1,098	\$1,218	\$1,535	\$1,577	\$1,509	\$1,539	\$2,310	\$2,490	\$2,370	\$2,250	\$2,205	\$2,010	\$1,890	\$1,960	\$2,870	\$620 27.6%
Massasoit	\$1,062	\$1,308	\$1,655	\$1,938	\$1,887	\$2,241	\$2,490	\$2,490	\$2,370	\$2,280	\$2,160	\$2,070	\$2,040	\$2,040	\$2,640	\$360 15.8%
Middlesex	\$1,280	\$1,340	\$1,472	\$2,034	\$2,076	\$2,580	\$2,820	\$2,820	\$2,750	\$2,630	\$2,450	\$2,360	\$2,360	\$2,510	\$3,020	\$390 14.8%
Mount Wachusett	\$1,167	\$1,412	\$1,929	\$2,568	\$2,565	\$2,541	\$3,000	\$3,150	\$3,060	\$2,950	\$2,800	\$2,660	\$2,570	\$2,690	\$3,410	\$460 15.6%
North Shore	\$995	\$1,205	\$1,479	\$2,002	\$2,100	\$2,280	\$2,490	\$2,490	\$2,490	\$2,400	\$2,220	\$2,130	\$2,190	\$2,490	\$3,090	\$690 28.8%
Northern Essex	\$1,143	\$1,248	\$1,430	\$1,818	\$1,950	\$2,055	\$2,430	\$2,430	\$2,550	\$2,445	\$2,310	\$2,220	\$2,190	\$2,280	\$2,670	\$225 9.2%
Quinsigamond	\$1,030	\$1,140	\$1,437	\$2,020	\$2,014	\$2,054	\$2,254	\$2,254	\$2,370	\$2,250	\$2,070	\$1,980	\$1,890	\$1,890	\$2,730	\$480 21.3%
Roxbury	\$969	\$1,026	\$1,148	\$1,206	\$1,400	\$1,920	\$2,295	\$2,400	\$2,400	\$2,280	\$2,190	\$2,070	\$2,100	\$2,100	\$2,450	\$170 7.5%
STCC	\$1,026	\$1,166	\$1,536	\$1,814	\$1,898	\$2,476	\$2,630	\$2,630	\$2,630	\$2,510	\$2,360	\$2,270	\$2,184	\$2,434	\$2,734	\$224 8.9%
Weighted Average UMass	\$2,142	\$2,550	\$3,407	\$4,234	\$4,387	\$4,655	\$4,874	\$4,954	\$4,892	\$4,828	\$4,727	\$4,706	\$4,697	\$4,693	\$5,798	\$970 20.1%
Weighted Average State Colleges	\$1,424	\$1,721	\$2,324	\$2,925	\$3,110	\$3,181	\$3,237	\$3,334	\$3,287	\$3,192	\$3,103	\$2,984	\$2,962	\$2,954	\$3,743	\$551 17.3%
Weighted Average Community Colleges	\$1,075	\$1,223	\$1,515	\$1,898	\$1,966	\$2,171	\$2,474	\$2,520	\$2,529	\$2,427	\$2,297	\$2,182	\$2,153	\$2,273	\$2,833	\$406 16.7%
Weighted Average All Colleges and University	\$1,589	\$1,879	\$2,456	\$3,049	\$3,150	\$3,331	\$3,589	\$3,586	\$3,571	\$3,447	\$3,337	\$3,257	\$3,229	\$3,264	\$4,041	\$594 17.2%

1998 Graduate Placements (All Students)

	# 1998 Graduates	# Degrees for students w/o valid ssns	# Degrees for students with valid ssns	# Unduplicated Students (valid ssns only)	# Employed in Mass. 1yr. after Graduation	Total # Continuing Ed.	# Working, only	# Continuing Ed., only	# Working and Continuing Education	AVERAGE SALARY OF THOSE WORKING, ONLY	% Working within 1yr. of Graduation	# Unduplicated Continuing Ed. or Working	% Graduates Continuing Ed. or Working	% Graduates Continuing Ed.
Berkshire Community College	310	23	287	273	246	99	157	10	89	\$24,651	90.1%	256	93.8%	36.3%
Bristol Community College	687	0	687	661	544	151	417	24	127	\$23,937	82.3%	568	85.9%	22.8%
Bunker Hill Community College	515	9	506	506	439	90	366	17	73	\$26,753	86.8%	456	90.1%	17.8%
Cape Cod Community College	465	1	464	464	420	117	316	13	104	\$31,122	90.5%	433	93.3%	25.2%
Greenfield Community College	359	2	357	337	276	85	205	14	71	\$24,277	81.9%	290	86.1%	25.2%
Holyoke Community College	664	4	660	659	589	214	399	24	190	\$19,622	89.4%	613	93.0%	32.5%
Mass Bay Community College	564	9	555	553	504	120	395	11	109	\$29,745	91.1%	515	93.1%	21.7%
Massasoit Community College	750	5	745	743	691	171	538	18	153	\$26,315	93.0%	709	95.4%	23.0%
Middlesex Community College	833	3	830	786	693	146	568	21	125	\$27,495	88.2%	714	90.8%	18.6%
Mt. Wachusett Community College	516	1	515	470	410	49	367	6	43	\$24,188	87.2%	416	88.5%	10.4%
North Shore Community College	739	7	732	683	607	134	494	21	113	\$30,286	88.9%	628	91.9%	19.6%
Northern Essex Community College	683	1	682	647	539	88	470	19	69	\$26,440	83.3%	558	86.2%	13.6%
Quinsigamond Community College	678	4	674	674	602	114	501	13	101	\$26,442	89.3%	615	91.2%	16.9%
Roxbury Community College	179	3	176	170	148	48	104	4	44	\$24,742	87.1%	152	89.4%	28.2%
Springfield Technical Community College	852	3	849	830	702	127	595	20	107	\$23,300	84.6%	722	87.0%	15.3%
Community College Total	8,794	75	8,719	8,456	7,410	1,753	5,892	235	1,518	\$26,029	87.6%	7,645	90.4%	20.7%
Bridgewater State College	1,486	8	1,478	1,478	1,360	163	1,217	20	143	\$25,196	92.0%	1,380	93.4%	11.0%
Fitchburg State College	928	20	908	900	799	53	750	4	49	\$32,407	88.8%	803	89.2%	5.9%
Framingham State College	810	74	736	736	595	35	566	6	29	\$29,469	80.8%	601	81.7%	4.8%
Massachusetts College of Art	255	5	250	250	200	14	188	2	12	\$22,539	80.0%	202	80.8%	5.6%
Massachusetts Maritime Academy	120	0	120	120	69	6	66	3	3	\$35,017	57.5%	72	60.0%	5.0%
Massachusetts College of Liberal Arts	297	3	294	275	221	17	207	3	14	\$23,839	80.4%	224	81.5%	6.2%
Salem State College	1,360	8	1,352	1,352	1,217	75	1,152	10	65	\$30,781	90.0%	1,227	90.8%	5.5%
Westfield State College	987	2	985	983	858	76	790	8	68	\$24,643	87.3%	866	88.1%	7.7%
Worcester State College	760	1	759	759	660	66	606	12	54	\$26,302	87.0%	672	88.5%	8.7%
State College Total	7,003	121	6,882	6,853	5,979	505	5,542	68	437	\$27,739	87.2%	6,047	88.2%	7.4%

Source: MISER calculations from DET and NSC data

1998 Graduates Continuing Education

	# Continuing Education, only	# Working and Continuing Education	Total # Continuing Education	% Continuing Education	# at MA Comm. Colleges	# at MA State Colleges	# at MA Public Univ	# at MA Private	# Out of State	Sum	% Cont. Ed. in MA Public Higher Education
Berkshire Community College	10	89	99	36.3%	29	24	24	6	16	99	77.8%
Bristol Community College	24	127	151	22.8%	14	47	72	6	12	151	88.1%
Bunker Hill Community College	17	73	90	17.8%	1	7	47	30	5	90	61.1%
Cape Cod Community College	13	104	117	25.2%	47	12	41	11	6	117	85.5%
Greenfield Community College	14	71	85	25.2%	7	7	52	9	10	85	77.6%
Holyoke Community College	24	190	214	32.5%	49	58	62	33	12	214	79.0%
Mass Bay Community College	11	109	120	21.7%	45	8	30	32	5	120	69.2%
Massasoit Community College	18	153	171	23.0%	23	81	43	16	8	171	86.0%
Middlesex Community College	21	125	146	18.6%	11	19	71	28	17	146	69.2%
Mt. Wachusett Community College	6	43	49	10.4%	7	8	14	16	4	49	59.2%
North Shore Community College	21	113	134	19.6%	12	68	26	23	5	134	79.1%
Northern Essex Community College	19	69	88	13.6%	8	17	34	12	17	88	67.0%
Quinsigamond Community College	13	101	114	16.9%	4	49	18	38	5	114	62.3%
Roxbury Community College	4	44	48	28.2%	1	0	31	16	0	48	66.7%
Springfield Technical Community College	20	107	127	15.3%	21	26	39	25	16	127	67.7%
Community College Total	235	1,518	1,753	20.7%	279	431	604	301	138	1753	75.0%
Bridgewater State College	20	143	163	11.0%	11	58	13	43	38	163	50.3%
Fitchburg State College	4	49	53	5.9%	8	12	9	18	6	53	54.7%
Framingham State College	6	29	35	4.8%	3	7	3	14	8	35	37.1%
Massachusetts College of Art	2	12	14	5.6%	2	3	0	6	3	14	35.7%
Massachusetts Maritime Academy	3	3	6	5.0%	1	0	0	0	5	6	16.7%
Massachusetts College of Liberal Arts	3	14	17	6.2%	1	6	3	3	4	17	58.8%
Salem State College	10	65	75	5.5%	6	21	11	25	12	75	50.7%
Westfield State College	8	68	76	7.7%	18	9	13	27	9	76	52.6%
Worcester State College	12	54	66	8.7%	4	6	12	31	13	66	33.3%
State College Total	68	437	505	7.4%	54	122	64	167	98	505	47.5%

Source: MISER calculations from DET and NSC data

1999 Graduate Placements (All Students)

	# 1998 Graduates	# Degrees for students w/o valid ssns	# Degrees for students with valid ssns	# Unduplicated Students (valid ssns only)	# Employed in Mass. 1yr. after Graduation	Total # Continuing Ed.	# Working, only	# Continuing Ed., only	# Working and Continuing Education	AVERAGE SALARY OF THOSE WORKING, ONLY	% Working within 1yr. of Graduation	# Unduplicated or Working Continuing Ed.	% Graduates Continuing Ed. or Working	% Graduates Continuing Ed.
Berkshire Community College	303	13	290	287	260	77	189	6	71	\$25,138	90.6%	266	92.7%	26.8%
Bristol Community College	755	5	750	726	617	168	471	22	146	\$23,683	85.0%	639	88.0%	23.1%
Bunker Hill Community College	470	11	459	456	411	105	317	11	94	\$26,547	90.1%	422	92.5%	23.0%
Cape Cod Community College	449	0	449	447	411	71	350	10	61	\$25,928	91.9%	421	94.2%	15.9%
Greenfield Community College	372	4	368	351	291	84	220	13	71	\$24,437	82.9%	304	86.6%	23.9%
Holyoke Community College	677	5	672	671	582	224	385	27	197	\$20,843	86.7%	609	90.8%	33.4%
Mass Bay Community College	564	8	556	554	508	140	378	10	130	\$29,968	91.7%	518	93.5%	25.3%
Massasoit Community College	680	5	675	670	616	172	464	20	152	\$26,777	91.9%	636	94.9%	25.7%
Middlesex Community College	762	3	759	733	638	112	539	13	99	\$27,567	87.0%	651	88.8%	15.3%
Mt. Wachusett Community College	540	0	540	490	421	70	364	13	57	\$27,656	85.9%	434	88.6%	14.3%
North Shore Community College	669	1	668	630	567	134	449	16	118	\$28,658	90.0%	583	92.5%	21.3%
Northern Essex Community College	680	4	676	640	512	143	395	26	117	\$32,660	80.0%	538	84.1%	22.3%
Quinsigamond Community College	619	4	615	615	551	167	402	18	149	\$27,687	89.6%	569	92.5%	27.2%
Roxbury Community College	144	3	141	137	127	34	96	3	31	\$27,390	92.7%	130	94.9%	24.8%
Springfield Technical Community College	920	4	916	903	783	146	662	25	121	\$25,284	86.7%	808	89.5%	16.2%
Community College Total	8,604	70	8,534	8,310	7,295	1,847	5,681	233	1,614	\$26,650	87.8%	7,528	90.6%	22.2%
Bridgewater State College	1,519	8	1,511	1,511	1,375	127	1,265	17	110	\$26,805	91.0%	1,392	92.1%	8.4%
Fitchburg State College	984	23	961	931	849	72	783	6	66	\$38,981	91.2%	855	91.8%	7.7%
Framingham State College	1,027	159	868	868	675	59	635	19	40	\$32,051	77.8%	694	80.0%	6.8%
Massachusetts College of Art	277	8	269	269	205	16	191	2	14	\$23,758	76.2%	207	77.0%	5.9%
Massachusetts Maritime Academy	134	1	133	133	91	6	85		6	\$35,980	68.4%	91	68.4%	4.5%
Massachusetts College of Liberal Arts	344	2	342	323	253	22	238	7	15	\$27,932	78.3%	260	80.5%	6.8%
Salem State College	1,231	13	1,218	1,218	1,109	89	1,028	8	81	\$31,621	91.1%	1,117	91.7%	7.3%
Westfield State College	919	0	919	918	808	80	742	14	66	\$26,488	88.0%	822	89.5%	8.7%
Worcester State College	700	3	697	697	651	49	605	3	46	\$26,510	93.4%	654	93.8%	7.0%
State College Total	7,135	217	6,918	6,868	6,016	520	5,572	76	444	\$30,008	87.6%	6,092	88.7%	7.6%

Source: MISER calculations from DET and NSC data

1999 Graduates Continuing Education

	# Continuing Education, only	# Working and Continuing Education	Total # Continuing Education	% Continuing Education	# at MA Comm. Colleges	# at MA State Colleges	# at MA Public Univ	# at MA Private	# Out of State	Sum	% Cont. Ed. in MA Public Higher Education
Berkshire Community College	6	71	77	26.8%	4	29	27	4	13	77	77.9%
Bristol Community College	22	146	168	23.1%	10	55	79	8	16	168	85.7%
Bunker Hill Community College	11	94	105	23.0%	3	10	48	40	4	105	58.1%
Cape Cod Community College	10	61	71	15.9%	9	10	30	17	5	71	69.0%
Greenfield Community College	13	71	84	23.9%	8	12	46	6	12	84	78.6%
Holyoke Community College	27	197	224	33.4%	62	59	52	33	18	224	77.2%
Mass Bay Community College	10	130	140	25.3%	57	10	45	22	6	140	80.0%
Massasoit Community College	20	152	172	25.7%	39	67	43	18	5	172	86.6%
Middlesex Community College	13	99	112	15.3%	4	12	61	21	14	112	68.8%
Mt. Wachusett Community College	13	57	70	14.3%	12	13	29	8	8	70	77.1%
North Shore Community College	16	118	134	21.3%	12	64	29	22	7	134	78.4%
Northern Essex Community College	26	117	143	22.3%	40	14	57	12	20	143	77.6%
Quinsigamond Community College	18	149	167	27.2%	61	54	16	28	8	167	78.4%
Roxbury Community College	3	31	34	24.8%	0	2	22	6	4	34	70.6%
Springfield Technical Community College	25	121	146	16.2%	20	24	49	35	18	146	63.7%
Community College Total	233	1,614	1,847	22.2%	341	435	633	280	158	1847	76.3%
Bridgewater State College	17	110	127	8.4%	15	17	14	49	28	123	36.2%
Fitchburg State College	6	66	72	7.7%	6	24	11	21	10	72	56.9%
Framingham State College	19	40	59	6.8%	4	6	13	22	14	59	39.0%
Massachusetts College of Art	2	14	16	5.9%	1	1	2	8	4	16	25.0%
Massachusetts Maritime Academy	0	6	6	4.5%	0	1	2	2	1	6	50.0%
Massachusetts College of Liberal Arts	7	15	22	6.8%	2	2	1	7	10	22	22.7%
Salem State College	8	81	89	7.3%	14	19	8	30	16	87	46.1%
Westfield State College	14	66	80	8.7%	17	15	10	23	15	80	52.5%
Worcester State College	3	46	49	7.0%	0	8	6	24	10	48	28.6%
State College Total	76	444	520	7.6%	59	93	67	186	108	513	42.1%

Source: MISER calculations from DET and NSC data

2000 Graduate Placements (All Students)

	# 1998 Graduates	# Degrees for students w/o valid ssns	# Degrees for students with valid ssns	# Unduplicated Students (valid ssns only)	# Employed in Mass. 1yr. after Graduation	Total # Continuing Ed.	# Working, only	# Continuing Ed., only	# Working and Continuing Education	AVERAGE SALARY OF THOSE WORKING, ONLY	% Working within 1yr. of Graduation	# Unduplicated or Working Continuing Ed.	% Graduates Continuing Ed. or Working	% Graduates Continuing Ed.
Berkshire Community College	320	23	297	291	258	69	197	8	61	\$24,750	88.7%	266	91.4%	23.7%
Bristol Community College	657	4	653	627	528	159	389	20	139	\$28,002	84.2%	548	87.4%	25.4%
Bunker Hill Community College	509	507	2	2										
Cape Cod Community College	395	2	393	392	338	119	235	16	103	\$27,615	86.2%	354	90.3%	30.4%
Greenfield Community College	405	2	403	379	301	115	207	21	94	\$27,634	79.4%	322	85.0%	30.3%
Holyoke Community College	719	5	714	712	628	241	414	27	214	\$22,841	88.2%	655	92.0%	33.8%
Mass Bay Community College	657	11	646	635	581	178	427	24	154	\$37,410	91.5%	605	95.3%	28.0%
Massasoit Community College	730	1	729	723	656	202	474	20	182	\$35,026	90.7%	676	93.5%	27.9%
Middlesex Community College	775	5	770	748	664	144	543	23	121	\$34,083	88.8%	687	91.8%	19.3%
Mt. Wachusett Community College	490	2	488	465	400	67	341	8	59	\$29,528	86.0%	408	87.7%	14.4%
North Shore Community College	790	3	787	746	672	149	541	18	131	\$32,997	90.1%	690	92.5%	20.0%
Northern Essex Community College	689	4	685	647	496	97	422	23	74	\$64,907	76.7%	519	80.2%	15.0%
Quinsigamond Community College	654	6	648	626	573	169	415	11	158	\$34,530	91.5%	584	93.3%	27.0%
Roxbury Community College	131	3	128	127	110	49	66	5	44	\$35,486	86.6%	115	90.6%	38.6%
Springfield Technical Community College	947	3	944	937	784	170	638	24	146	\$31,219	83.7%	808	86.2%	18.1%
Community College Total	8,359	74	8,285	8,055	6,989	1,928	5,309	248	1,680	\$34,173	86.8%	7,237	89.8%	23.9%
Bridgewater State College	1,508	14	1,494	1,494	1,372	126	1,261	15	111	\$30,016	91.8%	1,387	92.8%	8.4%
Fitchburg State College	960	29	931	911	812	59	758	5	54	\$39,151	89.1%	817	89.7%	6.5%
Framingham State College	983	123	860	860	721	53	676	8	45	\$33,755	83.8%	729	84.8%	6.2%
Massachusetts College of Art	256	8	248	248	200	18	187	5	13	\$27,192	80.6%	205	82.7%	7.3%
Massachusetts Maritime Academy	136	4	132	132	73	3	72	2	1	\$36,691	55.3%	75	56.8%	2.3%
Massachusetts College of Liberal Arts	372	0	372	356	264	29	242	7	22	\$28,824	74.2%	271	76.1%	8.1%
Salem State College	1,325	17	1,308	1,308	1,181	107	1,084	10	97	\$34,479	90.3%	1,191	91.1%	8.2%
Westfield State College	994	1	993	991	865	94	784	13	81	\$30,466	87.3%	878	88.6%	9.5%
Worcester State College	797	1	796	726	654	54	606	6	48	\$35,465	90.1%	660	90.9%	7.4%
State College Total	7,331	197	7,134	7,026	6,142	543	5,670	71	472	\$33,151	87.4%	6,213	88.4%	7.7%

Source: MISER calculations from DET and NSC data

Note: Bunker Hill Community College's placement data for 2000 graduates are not available. Segmental totals for 2000 do not include BHCC's data.

2000 Graduates Continuing Education

	# Continuing Education, only	# Working and Continuing Education	Total # Continuing Education	% Continuing Education	# at MA Comm. Colleges	# at MA State Colleges	# at MA Public Univ	# at MA Private	# Out of State	Sum	% Cont. Ed. in MA Public Higher Education
Berkshire Community College	8	61	69	23.7%	1	24	23	5	16	69	69.6%
Bristol Community College	20	139	159	25.4%	7	52	78	6	15	158	86.2%
Bunker Hill Community College	DATA NOT AVAILABLE										
Cape Cod Community College	16	103	119	30.4%	42	27	27	14	9	119	80.7%
Greenfield Community College	21	94	115	30.3%	8	15	56	17	19	115	68.7%
Holyoke Community College	27	214	241	33.8%	41	70	73	42	15	241	76.3%
Mass Bay Community College	24	154	178	28.0%	78	14	49	24	11	176	79.2%
Massasoit Community College	20	182	202	27.9%	49	77	50	17	8	201	87.1%
Middlesex Community College	23	121	144	19.3%	7	13	91	13	20	144	77.1%
Mt. Wachusett Community College	8	59	67	14.4%	8	14	20	16	9	67	62.7%
North Shore Community College	18	131	149	20.0%	9	71	32	31	6	149	75.2%
Northern Essex Community College	23	74	97	15.0%	6	13	45	10	23	97	66.0%
Quinsigamond Community College	11	158	169	27.0%	23	80	25	36	5	169	75.7%
Roxbury Community College	5	44	49	38.6%	6	0	30	13	0	49	73.5%
Springfield Technical Community College	24	146	170	18.1%	36	34	45	36	19	170	67.6%
Community College Total	248	1,680	1,928	23.9%	321	504	644	280	175	1924	76.2%
Bridgewater State College	15	111	126	8.4%	12	26	15	47	24	124	42.1%
Fitchburg State College	5	54	59	6.5%	10	13	12	14	9	58	59.3%
Framingham State College	8	45	53	6.2%	8	7	8	22	8	53	43.4%
Massachusetts College of Art	5	13	18	7.3%	1	3	1	6	7	18	27.8%
Massachusetts Maritime Academy	2	1	3	2.3%	0	0	1	0	2	3	33.3%
Massachusetts College of Liberal Arts	7	22	29	8.1%	3	4	3	6	11	27	34.5%
Salem State College	10	97	107	8.2%	10	30	14	41	10	105	50.5%
Westfield State College	13	81	94	9.5%	16	10	13	36	18	93	41.5%
Worcester State College	6	48	54	7.4%	3	9	1	25	14	52	24.1%
State College Total	71	472	543	7.7%	63	102	68	197	103	533	42.9%

Source: MISER calculations from DET and NSC data

Note: Bunker Hill Community College's placement data for 2000 graduates are not available. Segmental totals for 2000 do not include BHCC's data.

2001 Graduate Placements (All Students)

	# 1998 Graduates	# Degrees for students w/o valid ssns	# Degrees for students with valid ssns	# Unduplicated Students (valid ssns only)	# Employed in Mass. 1yr. after Graduation	Total # Continuing Ed.	# Working, only	# Continuing Ed., only	# Working and Continuing Education	AVERAGE SALARY OF THOSE WORKING, ONLY	% Working within 1yr. of Graduation	# Unduplicated or Working Continuing Ed.	% Graduates Continuing Ed. or Working	% Graduates Continuing Ed.
Berkshire Community College	305	20	285	276	242	78	173	9	69	\$24,040	87.7%	251	90.9%	28.3%
Bristol Community College	755	5	750	712	578	216	397	35	181	\$31,655	81.2%	613	86.1%	30.3%
Bunker Hill Community College	488	24	464	456	395	98	314	17	81	\$30,786	86.6%	412	90.4%	21.5%
Cape Cod Community College	439	0	439	434	380	129	267	16	113	\$30,362	87.6%	396	91.2%	29.7%
Greenfield Community College	416	4	412	385	308	100	231	23	77	\$29,922	80.0%	331	86.0%	26.0%
Holyoke Community College	702	4	698	694	613	237	403	27	210	\$24,271	88.3%	640	92.2%	34.1%
Mass Bay Community College	616	9	607	590	510	167	367	24	143	\$37,153	86.4%	534	90.5%	28.3%
Massasoit Community College	701	4	697	696	622	225	425	28	197	\$28,716	89.4%	650	93.4%	32.3%
Middlesex Community College	873	19	854	828	680	179	537	36	143	\$33,692	82.1%	716	86.5%	21.6%
Mt. Wachusett Community College	524	6	518	479	395	73	336	14	59	\$31,212	82.5%	409	85.4%	15.2%
North Shore Community College	789	6	783	741	650	163	511	24	139	\$35,693	87.7%	674	91.0%	22.0%
Northern Essex Community College	609	4	605	586	464	111	376	23	88	\$43,270	79.2%	487	83.1%	18.9%
Quinsigamond Community College	662	7	655	647	569	147	448	26	121	\$33,592	87.9%	595	92.0%	22.7%
Roxbury Community College	176	5	171	171	152	65	98	11	54	\$26,775	88.9%	163	95.3%	38.0%
Springfield Technical Community College	1,067	10	1,057	1,034	835	184	691	40	144	\$35,877	80.8%	875	84.6%	17.8%
Community College Total	9,122	127	8,995	8,729	7,393	2,172	5,574	353	1,819	\$32,860	84.7%	7,746	88.7%	24.9%
Bridgewater State College	1,473	8	1,465	1,465	1,335	137	1,214	16	121	\$31,628	91.1%	1,351	92.2%	9.4%
Fitchburg State College	804	12	792	782	658	54	615	11	43	\$39,853	84.1%	669	85.5%	6.9%
Framingham State College	1,041	109	932	932	734	65	684	15	50	\$35,826	78.8%	749	80.4%	7.0%
Massachusetts College of Art	296	12	284	284	224	19	212	7	12	\$24,254	78.9%	231	81.3%	6.7%
Massachusetts Maritime Academy	130	1	129	129	77	4	74	1	3	\$37,884	59.7%	78	60.5%	3.1%
Massachusetts College of Liberal Arts	332	1	331	318	233	24	219	10	14	\$28,314	73.3%	243	76.4%	7.5%
Salem State College	1,264	23	1,241	1,240	1,117	98	1,030	11	87	\$37,496	90.1%	1,128	91.0%	7.9%
Westfield State College	947	2	945	944	815	89	744	18	71	\$30,814	86.3%	833	88.2%	9.4%
Worcester State College	796	2	794	745	673	77	602	6	71	\$39,226	90.3%	679	91.1%	10.3%
State College Total	7,083	170	6,913	6,839	5,866	567	5,394	95	472	\$34,674	85.8%	5,961	87.2%	8.3%

Source: MISER calculations from DET and NSC data

2001 Graduates Continuing Education

	# Continuing Education, only	# Working and Continuing Education	Total # Continuing Education	% Continuing Education	# at MA Comm. Colleges	# at MA State Colleges	# at MA Public Univ	# at MA Private	# Out of State	Sum	% Cont. Ed. in MA Public Higher Education
Berkshire Community College	9	69	78	28.3%	3	33	21	6	15	78	73.1%
Bristol Community College	35	181	216	30.3%	8	57	119	13	17	214	85.2%
Bunker Hill Community College	17	81	98	21.5%	9	9	45	29	5	97	64.3%
Cape Cod Community College	16	113	129	29.7%	51	14	39	13	11	128	80.6%
Greenfield Community College	23	77	100	26.0%	17	18	35	11	19	100	70.0%
Holyoke Community College	27	210	237	34.1%	61	63	65	39	9	237	79.7%
Mass Bay Community College	24	143	167	28.3%	77	13	47	18	11	166	82.0%
Massasoit Community College	28	197	225	32.3%	47	107	51	15	5	225	91.1%
Middlesex Community College	36	143	179	21.6%	12	33	97	21	14	177	79.3%
Mt. Wachusett Community College	14	59	73	15.2%	14	20	18	12	9	73	71.2%
North Shore Community College	24	139	163	22.0%	62	52	25	16	8	163	85.3%
Northern Essex Community College	23	88	111	18.9%	5	15	61	11	19	111	73.0%
Quinsigamond Community College	26	121	147	22.7%	9	76	15	40	7	147	68.0%
Roxbury Community College	11	54	65	38.0%	5	0	45	12	3	65	76.9%
Springfield Technical Community College	40	144	184	17.8%	29	38	47	53	17	184	62.0%
Community College Total	353	1,819	2,172	24.9%	409	548	730	309	169	2165	77.7%
Bridgewater State College	16	121	137	9.4%	16	16	17	54	31	134	35.8%
Fitchburg State College	11	43	54	6.9%	8	8	7	22	9	54	42.6%
Framingham State College	15	50	65	7.0%	2	11	12	24	16	65	38.5%
Massachusetts College of Art	7	12	19	6.7%	1	2	0	10	6	19	15.8%
Massachusetts Maritime Academy	1	3	4	3.1%	0	0	2	1	1	4	50.0%
Massachusetts College of Liberal Arts	10	14	24	7.5%	2	2	2	4	14	24	25.0%
Salem State College	11	87	98	7.9%	10	23	6	42	17	98	39.8%
Westfield State College	18	71	89	9.4%	14	11	13	30	21	89	42.7%
Worcester State College	6	71	77	10.3%	6	9	11	40	9	75	33.8%
State College Total	95	472	567	8.3%	59	82	70	227	124	562	37.2%

Source: MISER calculations from DET and NSC data

Student Tracking: State Colleges 1996 Cohort

Type	# in Cohort	Graduation Rate within 6 Years					% Students Receiving an Award Less than 4 Years (i.e., Certificate or Associate's)	% Students Still Enrolled Pursuing a Degree	% Untrackable Students *
		% Students Receiving Degree at Same Institution	% Students Receiving Degree at Another MA Public 4-yr. Insitution	% Students Receiving Degree at MA Private 4-yr. Institution	% Students Receiving Degree at Out of State 4-yr. Institution	% Total Students Receiving Degree at 4-yr. Institution			
Bridgewater State College	First-time, Full-time Degree Seeking Freshman Transfer								
Fitchburg State College	First-time, Full-time Degree Seeking Freshman Transfer								
Framingham State College	First-time, Full-time Degree Seeking Freshman Transfer								
Massachusetts College of Art	First-time, Full-time Degree Seeking Freshman Transfer								
Massachusetts Maritime Academy	First-time, Full-time Degree Seeking Freshman Transfer								
Massachusetts College of Liberal Arts	First-time, Full-time Degree Seeking Freshman Transfer								
Salem State College	First-time, Full-time Degree Seeking Freshman Transfer								
Westfield State College	First-time, Full-time Degree Seeking Freshman Transfer								
Worcester State College	First-time, Full-time Degree Seeking Freshman Transfer								
State College Total	First-time, Full-time Degree Seeking Freshman Transfer								

Source: HEIRS and NSC data

*Note: Untrackable students were not found to have completed or to be still enrolled in MA public institutions (2 or 4-year) or found in the NSC database as completing or still enrolled (NSC captures 90% of enrollment in the United States) by Fall 2002.