



 Salem | STATE COLLEGE

Educating you for life

2008

SALEM STATE COLLEGE FACT BOOK

TABLE OF CONTENTS

INTRODUCTION	02
GLOSSARY AND DATA DEFINITIONS	03
SECTION I - ADMISSIONS DATA	
Fall Admissions At a Glance	06
Freshmen Applications, Admissions, Enrollment	14
By Gender	15
By Race	16
Freshmen Top Fifteen Feeder High Schools	17
Freshmen Majors	18
Transfer Applications, Admissions, Enrollment	19
By Gender	20
By Race	21
Transfer Top Ten Feeder Colleges	22
Transfer Majors	23
Graduate Applications, Admissions, Enrollment	24
By Gender	24
By Race	25
Graduate Programs	26
SECTION II - ENROLLMENT DATA	
Enrollment At a Glance	28
Fall Headcount 2004 – 2008	32
Undergraduate Enrollment	
Fall Undergraduate Headcount 2004 – 2008	33
Fall Degree Seeking Undergraduate Headcount 2004 – 2008	34
Fall Degree Seeking Full Time Undergraduate Headcount 2004 – 2008	35
Fall Degree Seeking Part Time Undergraduate Headcount 2004 – 2008	36
Fall Non-Degree Seeking Undergraduate Headcount 2004 – 2008	37
Graduate Enrollment	
Fall Graduate Headcount 2004 – 2008	38
Fall Degree Seeking Graduate Headcount 2004 – 2008	39
Fall Degree Seeking Full Time Graduate Headcount 2004 – 2008	40
Fall Degree Seeking Part Time Graduate Headcount 2004 – 2008	41
Fall Non-Degree Seeking Graduate Headcount 2004 – 2008	42
Annual Enrollment Headcount and FTE 2004 – 2008	43
Enrollment by Major/Program	
Undergraduate Headcount by Major 2004 – 2008	44
Graduate Headcount by Program 2004 – 2008	45
SECTION III - RETENTION AND COMPLETION	
Outcomes At a Glance	48
Retention and Continuation, Total and by Gender	52
Retention and Continuation, by Race	53
Graduation Rates, Total and by Gender	54
Graduation Rates, by Race	55
Degrees Conferred by Gender and Race	56
Degrees Conferred by Degree and Gender	57
Degrees Conferred by Level and Race	58
Undergraduate Degrees Conferred by Major	59
Graduate Degrees Conferred by Program	60
SECTION IV - COLLEGE RESOURCES	
College Resources At a Glance	62
Revenues and Expenses	68
Full Time Employees by Race and Gender	69
Part Time Employees by Race and Gender	70
Full Time Faculty by Race and Gender	71
Full Time Faculty by Academic Rank	72
Part Time Faculty by Race and Gender	73
ENDNOTES AND SOURCES	74

INTRODUCTION

The following is the *2008 Salem State College Fact Book*. Most of this Fact Book is derived from and aligns with data reported to external organizations like the National Center for Education Statistics (NCES) through the Integrated Postsecondary Education Data System (IPEDS) and the Massachusetts Board of Higher Education through the Higher Education Information Resource System (HEIRS). It provides a single source summary of most of the information in those individual reports.

Fall enrollments by major for undergraduate students and by program for graduate students do not align to externally reported data for several reasons. These counts exclude non-degree seeking students. Students matriculated in more than one major or program are counted in all of their matriculated programs. Therefore, some students are omitted entirely and others are counted twice.

Institutions have a wide variety of data and information needs. This Fact Book reflects data from comparable points in time, over time. The data can inform decision makers by delineating trends as well as providing context and perspective. Today's data collection and retrieval systems provide far more immediate information for operational decisions and the Fact Book should be used to supplement that data and for providing general information about the college.

Theresa Jenkins took a leadership role and assembled most of the Fact Book this year. My sincere appreciation and thanks to Theresa, it would not have been created without her effort. Thanks to Steve Jervey, Budget Director, who prepares the revenue and expense report that is the basis of the Resource section of the book.

Karen Sayles
Director, Institutional Research and Assessment
June, 2009

GLOSSARY AND DATA DEFINITIONS

This glossary is organized by the order in which a term first appears in the Fact Book. Many of these terms have more than one meaning. The definition reflects how the term is used in the section. If a term is defined only once, the term should be interpreted in the same manner in all sections of the Fact Book.

Admissions Data:

Freshman – An applicant who has not attended a college other than Salem State College since high school

SAT – Refers to the SAT Reasoning Test. The Salem State Admissions Office utilizes the Critical Reading/Verbal and Mathematics/Math components to assist in making admissions decisions. The component parts scores, maximum 800, can be combined into a single score totaling up to 1600.

Transfer – An applicant who attended a postsecondary institution other than Salem State College prior to application to Salem State College

Applied – Counts only complete and actionable applications for the Fall Term

Acceptance Rate – The proportion of applicants accepted

Yield – The proportion of accepted applicants who are enrolled in classes on the enrollment freeze date

Non Resident Alien – Individuals who are not United States citizens and who are not entitled to legally reside indefinitely in the United States. Under federal reporting guidelines Non Resident Alien is a separate racial reporting classification. Non resident alien students who might designate a racial identity for themselves cannot be reported under that racial identity.

Unknown – Includes unknown and other

Enrollment Data:

All College – Includes all students enrolled in credit courses both graduate and undergraduate, day or evening

Undergraduate – Includes students enrolled in undergraduate credit courses

Graduate – Includes students enrolled in graduate credit courses

To ensure an unduplicated headcount, the few students enrolled in both graduate and undergraduate courses are counted as one or the other based on the majority of the enrolled credits. If a student is enrolled in an equal number of graduate and undergraduate credits, the student is assigned to the category of any matriculated program. If such a student is not matriculated, the student is counted as graduate.

Degree Seeking – A student who has been admitted to a course of study intended to result in a degree or certificate

Full Time – An undergraduate student enrolled in 12 or more credits or a graduate student enrolled in 9 or more credits in the given semester

Retention and Completion:

Cohort – Defined each fall including only new, degree seeking students who have not attended any other postsecondary institution since high school and who attended college on a full time basis in their first semester

Retention Rate – Proportion of the cohort for a given year who are enrolled in the following fall

Graduation Rate – Proportion of the cohort for a given year who have graduated within a given period of time

LEFT BLANK INTENTIONALLY

admissions

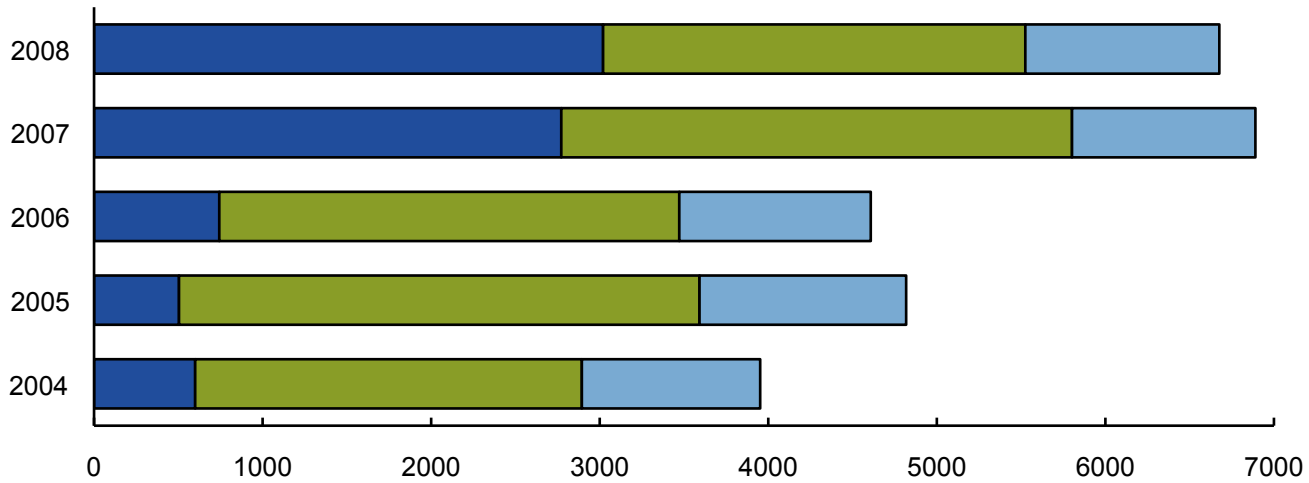
**Fall Admissions
At a Glance
2004 – 2008**



FRESHMAN ADMISSIONS: FALL 2004 – 2008

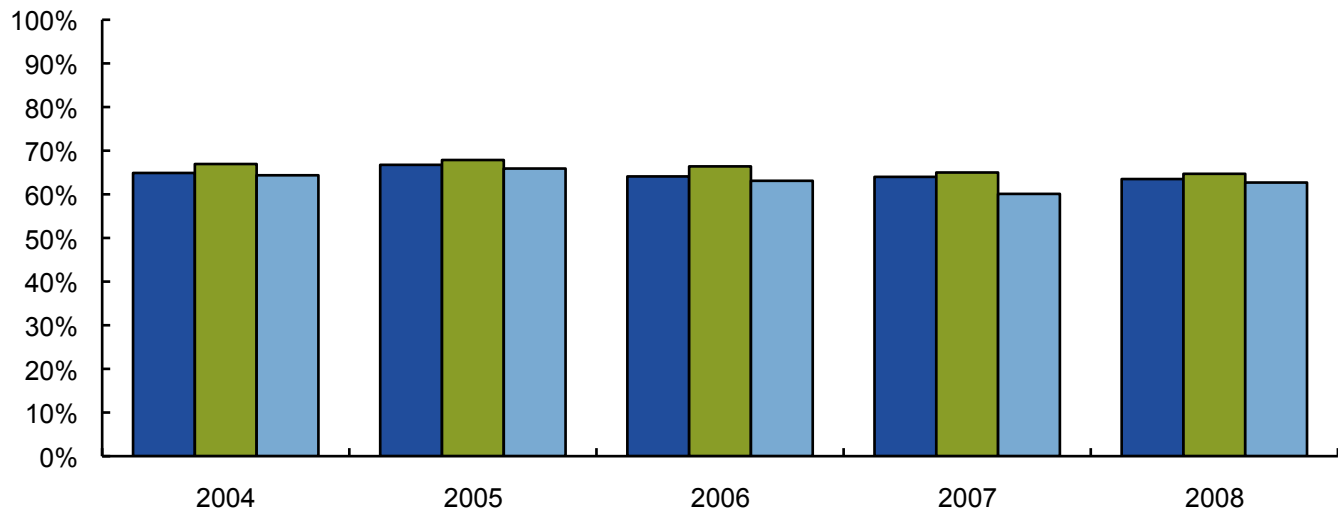
Freshman Applications Fall

■ Not Accepted ■ Accepted ■ Accepted Enrolled



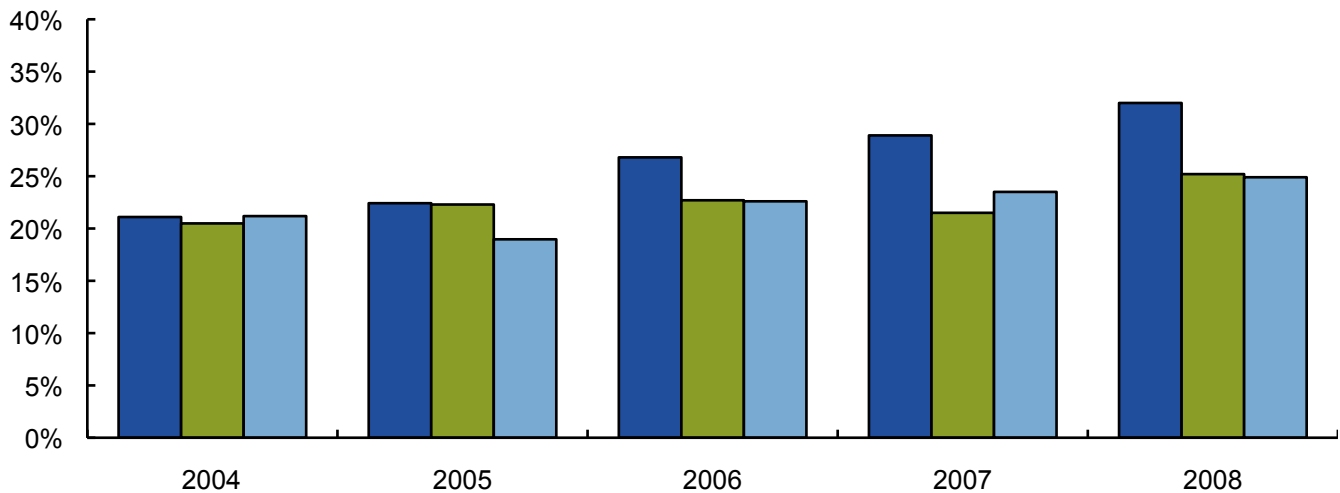
Females as a Percent of Freshman Applicants, Accepted, and Enrolled

■ Applied ■ Accepted ■ Enrolled



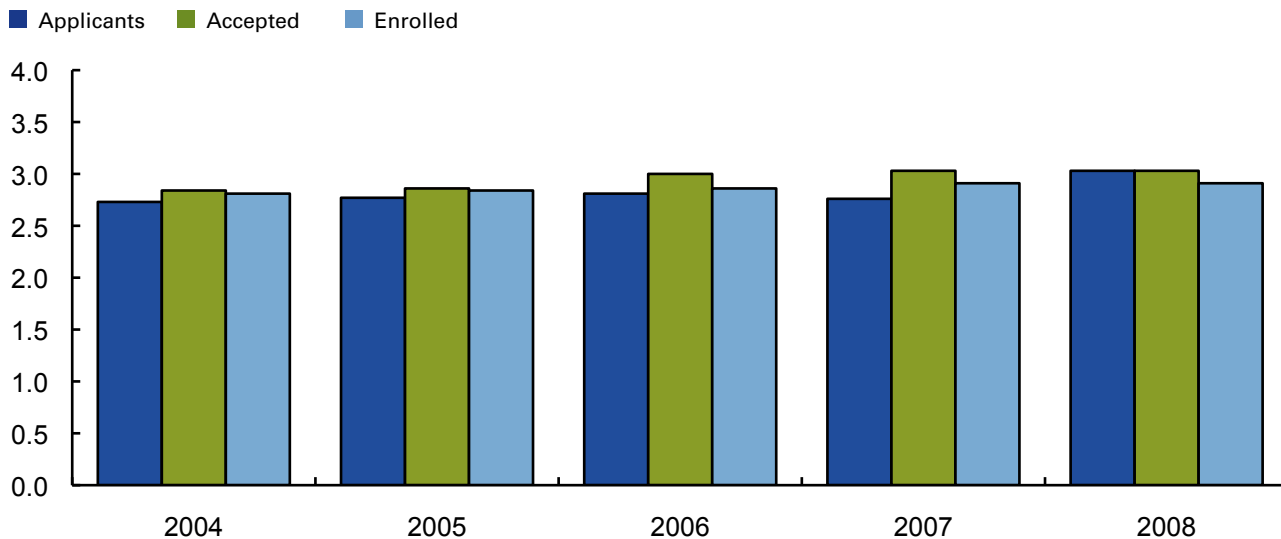
Percent of Freshman Applicants, Accepted, and Enrolled Who are Not White

■ Applied ■ Accepted ■ Enrolled

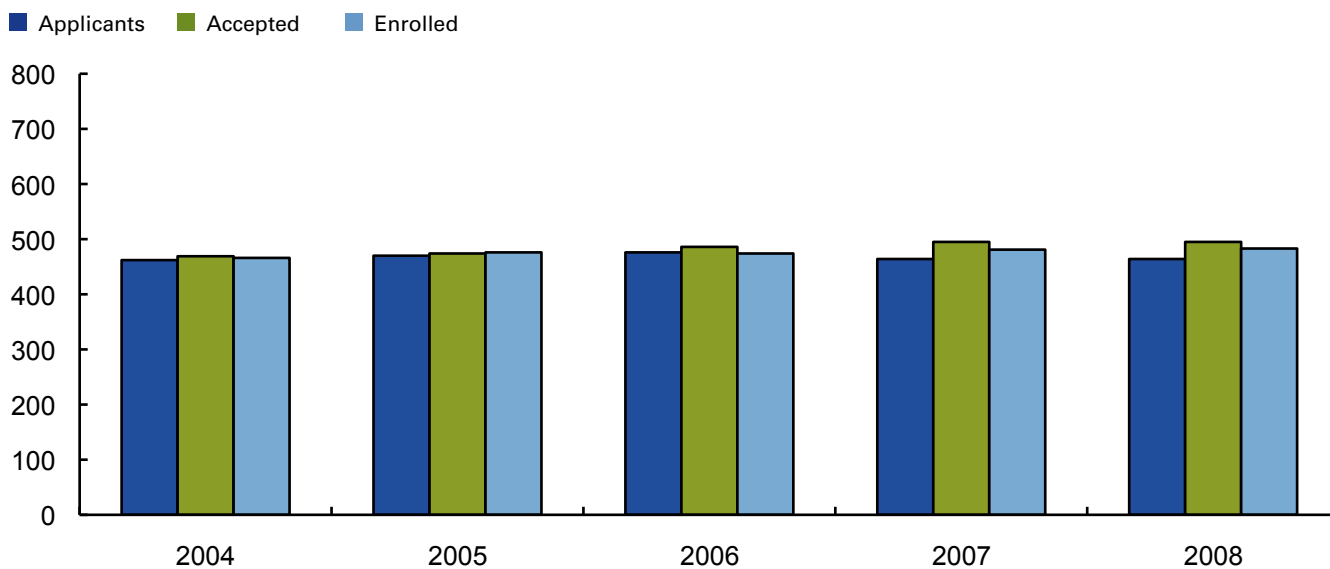


FRESHMAN ADMISSIONS: FALL 2004 – 2008

Average High School GPA of Applicants, Accepted, and Enrolled Freshmen

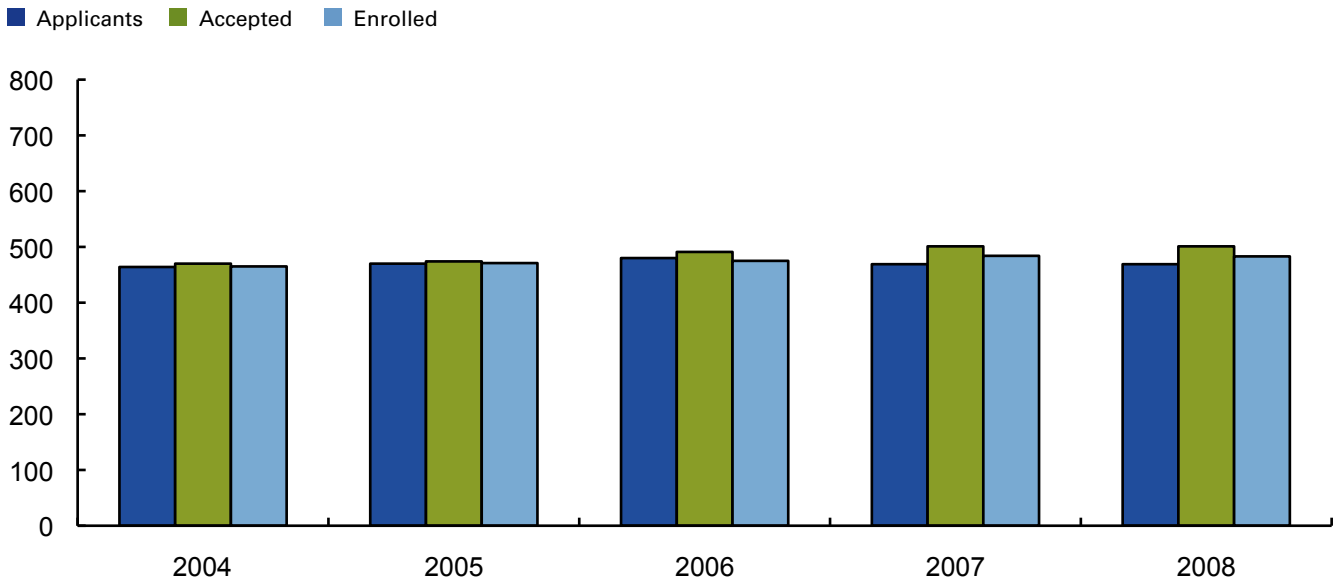


Average Verbal SAT of Applicants, Accepted, and Enrolled Freshmen

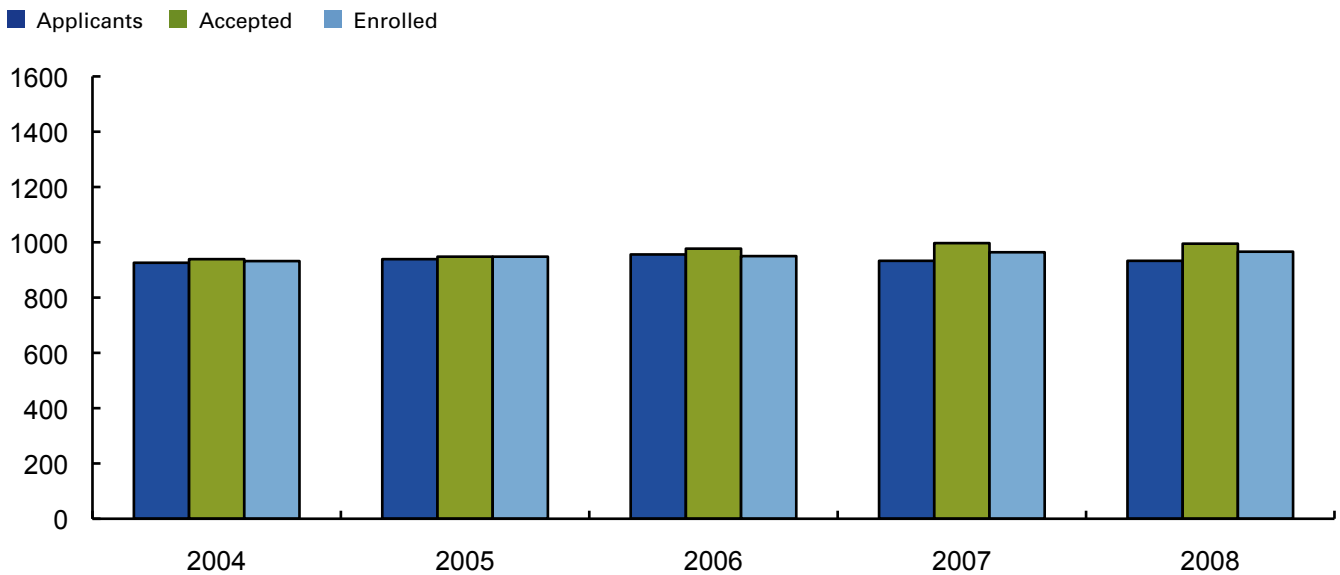


FRESHMAN ADMISSIONS: FALL 2004 – 2008

Average Math SAT of Applicants, Accepted, and Enrolled Freshmen



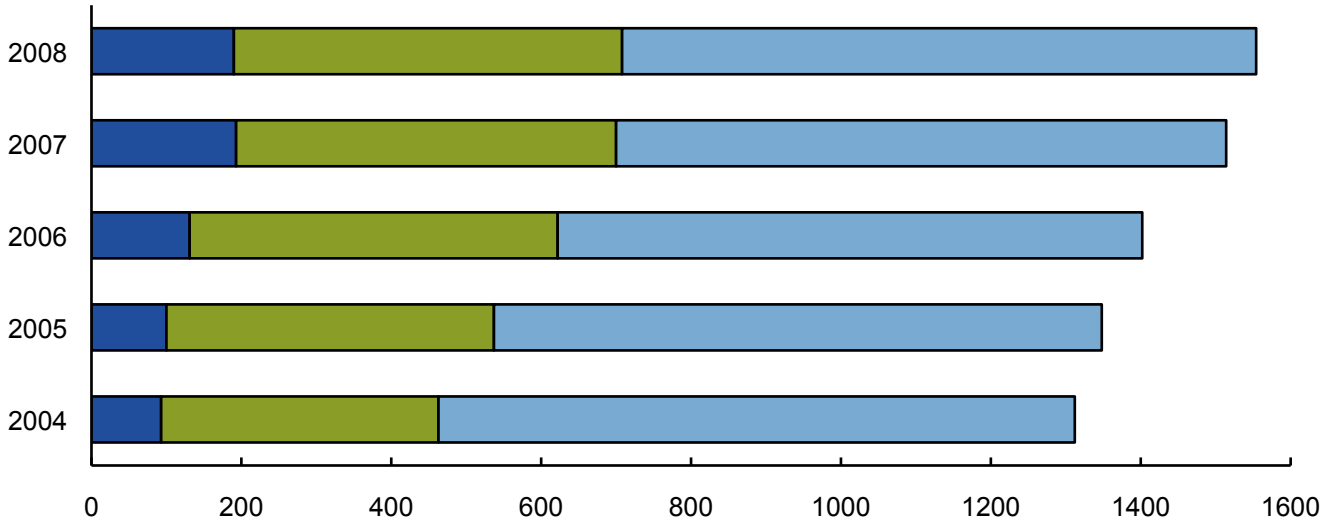
Average Combined SAT of Applicants, Accepted, and Enrolled Freshmen



TRANSFER ADMISSIONS: FALL 2004 – 2008

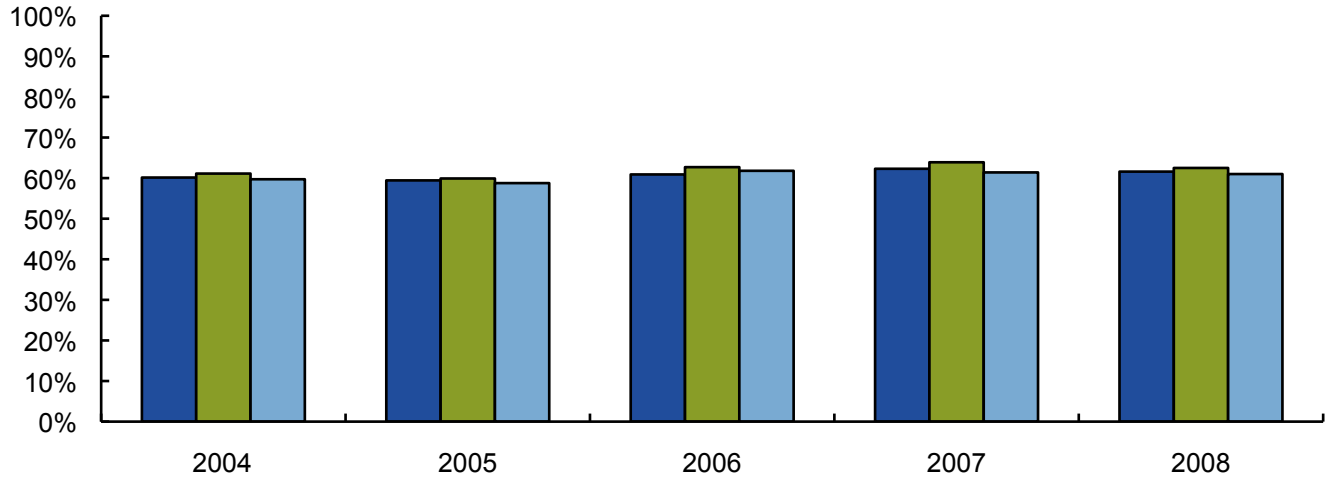
Transfer Applications Fall

■ Not Accepted ■ Accepted ■ Accepted Enrolled



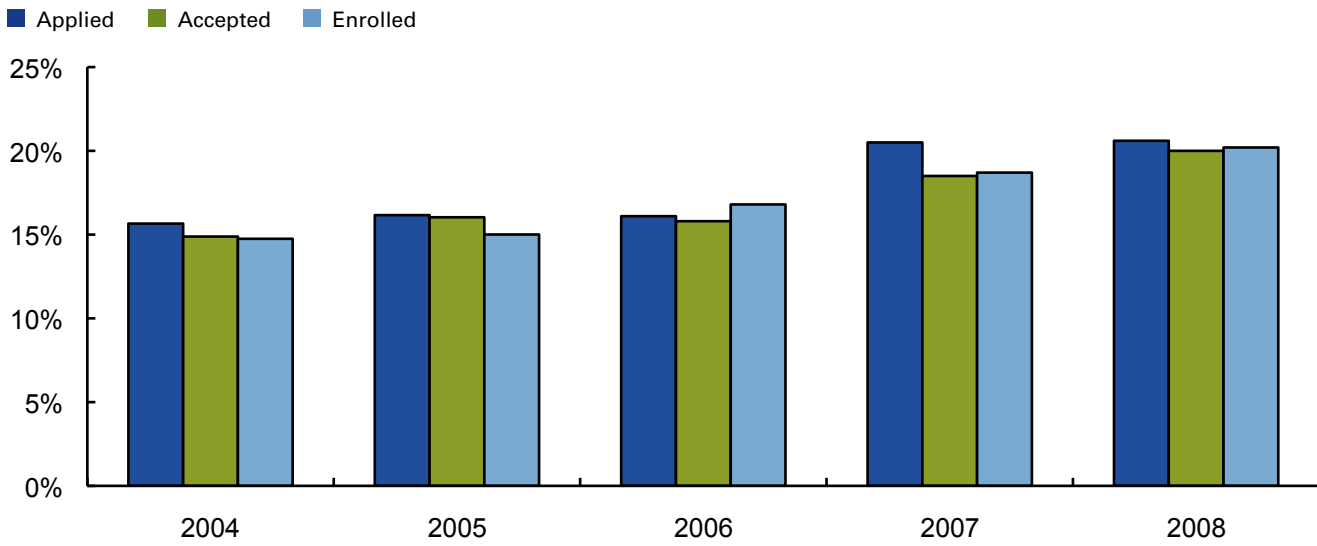
Female as a Percent of Transfer Applicants, Accepted, and Enrolled

■ Applied ■ Accepted ■ Enrolled

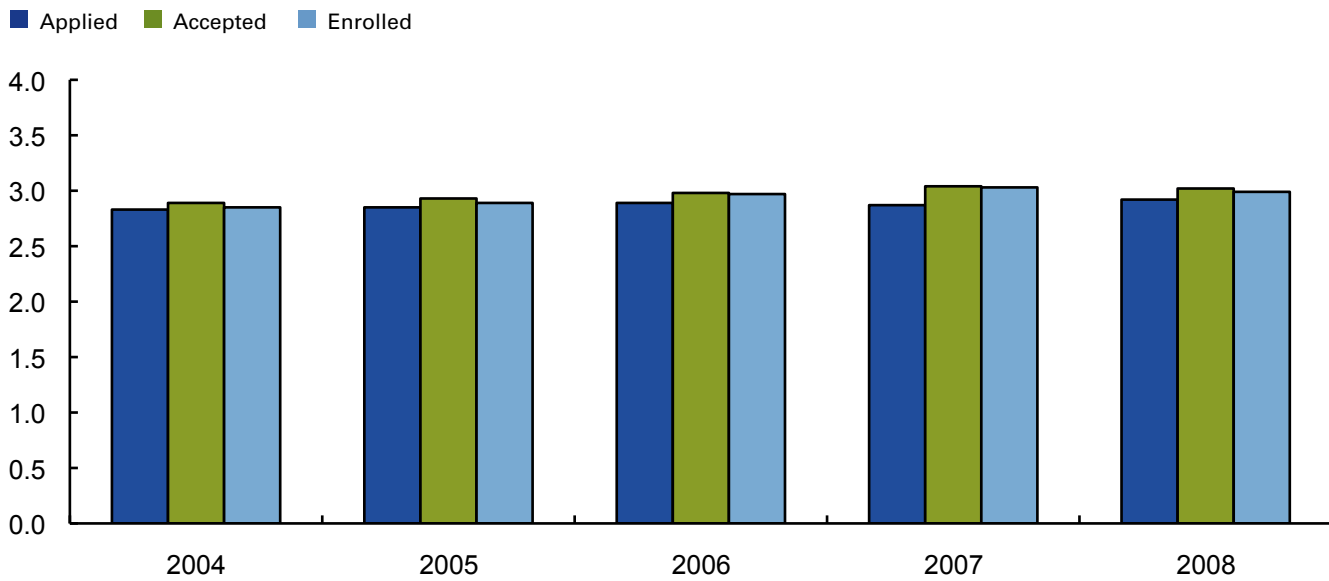


TRANSFER ADMISSIONS: FALL 2004 – 2008

Percent of Transfer Applicants, Accepted, and Enrolled who are Not White

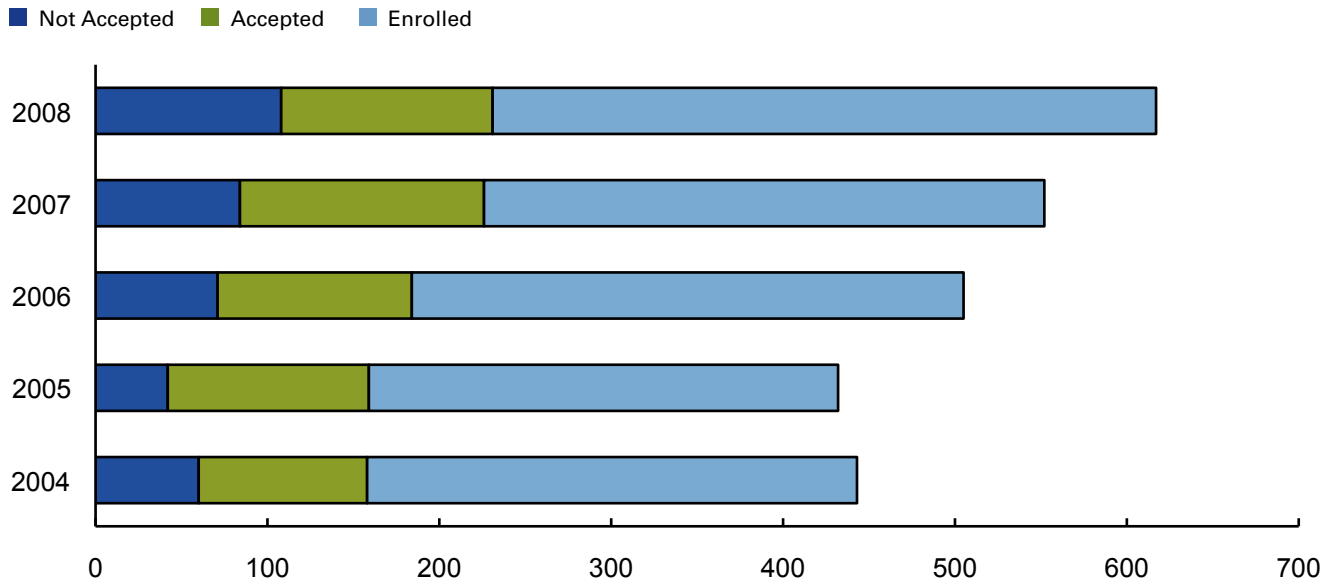


Average Transfer GPA of Applicants, Accepted, and Enrolled

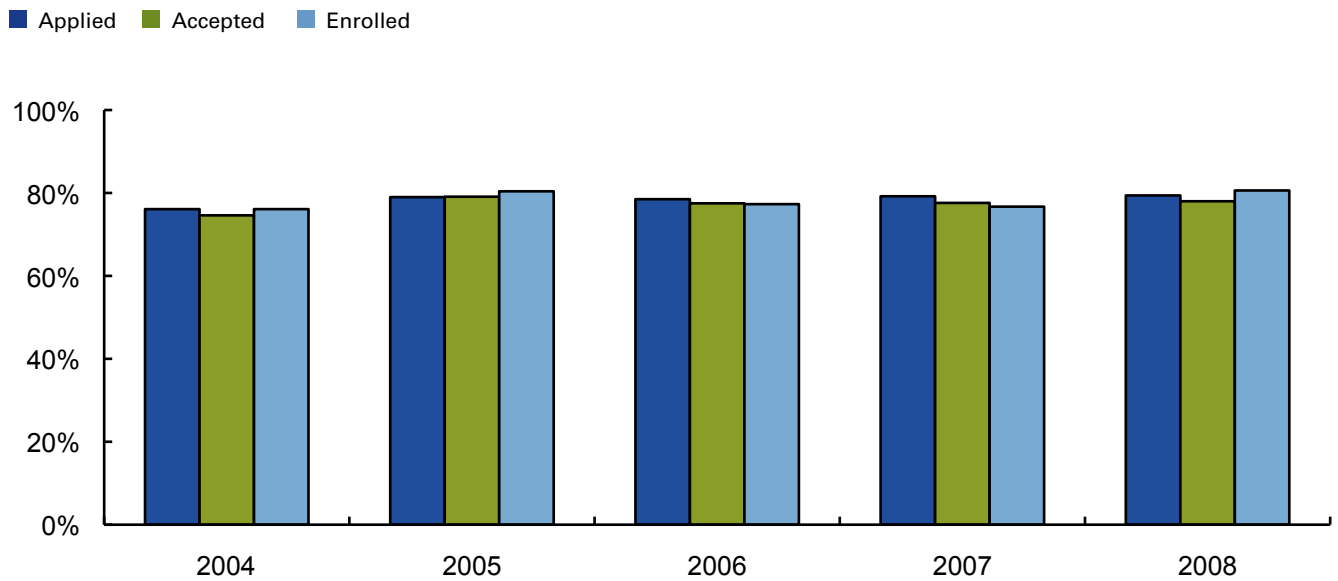


GRADUATE ADMISSIONS: FALL 2004 – 2008

Graduate Applications Fall



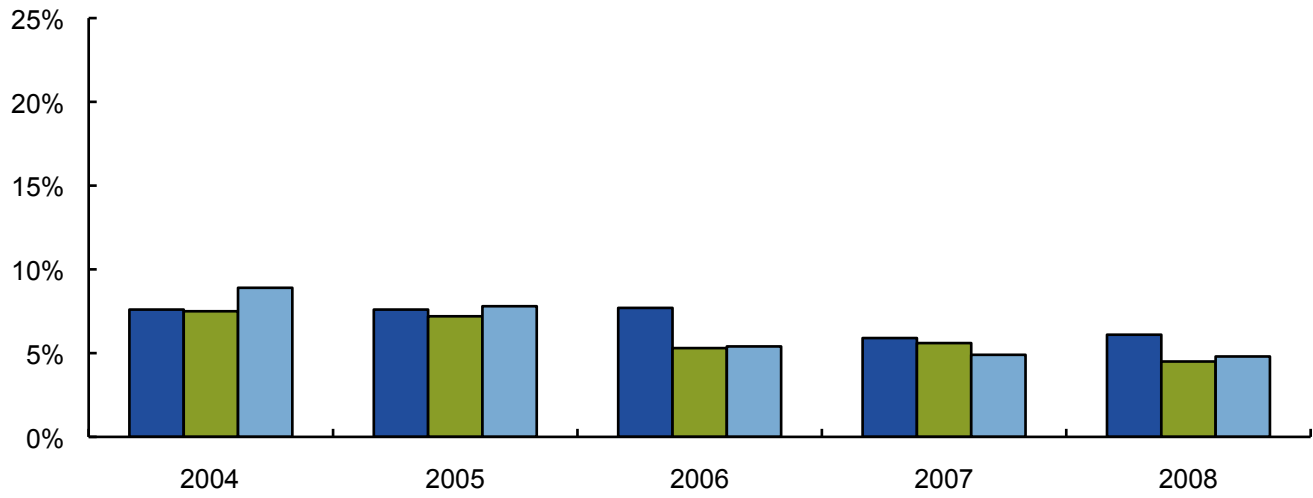
Female as a Percent of Graduate Applicants, Accepted, and Enrolled



GRADUATE ADMISSIONS: FALL 2004 – 2008

Percent of Graduate Applicants, Accepted, and Enrolled who are Not White

■ Applied ■ Accepted ■ Enrolled



admissions

**Fall Admissions
2004 – 2008
Tables**



FRESHMAN ADMISSIONS: FALL 2004 – 2008

	2004	2005	2006	2007	2008
Applied	3952	4818	4608	6890	6676
Accepted	3352	4314	3865	4118	3656
Enrolled	1058	1226	1136	1088	1151
Acceptance Rate	84.8%	89.5%	83.9%	59.8%	54.8%
Yield	31.6%	28.4%	29.4%	26.4%	31.5%

APPLIED	2004	2005	2006	2007	2008
Average HS GPA	2.73	2.77	2.81	2.76	3.03
Average SAT					
Math	464	470	480	469	469
Verbal	462	470	476	464	464
Combined	926	939	956	933	933

ACCEPTED	2004	2005	2006	2007	2008
Average HS GPA	2.84	2.86	3.00	3.03	3.03
Average SAT					
Math	470	474	491	501	501
Verbal	469	474	486	495	495
Combined	939	948	977	997	995

ENROLLED	2004	2005	2006	2007	2008
Average HS GPA	2.81	2.84	2.86	2.91	2.91
Average SAT					
Math	465	471	475	484	483
Verbal	466	476	474	481	483
Combined	932	948	950	964	966

FRESHMAN ADMISSIONS : FALL 2004 – 2008
GENDER

FEMALE	2004	2005	2006	2007	2008
Applied	2564	3215	2952	4410	4237
Accepted	2244	2927	2568	2675	2366
Enrolled	681	808	717	654	722
Acceptance Rate	87.5%	91.0%	87.0%	60.7%	55.8%
Yield	30.3%	27.6%	27.9%	24.4%	30.5%

MALE	2004	2005	2006	2007	2008
Applied	1387	1601	1656	2480	2439
Accepted	1108	1386	1297	1443	1290
Enrolled	377	418	419	434	429
Acceptance Rate	79.9%	86.6%	78.3%	58.2%	52.9%
Yield	34.0%	30.2%	32.3%	30.1%	33.3%

% FEMALE	2004	2005	2006	2007	2008
Applied	64.9%	66.8%	64.1%	64.0%	63.5%
Accepted	66.9%	67.9%	66.4%	65.0%	64.7%
Enrolled	64.4%	65.9%	63.1%	60.1%	62.7%

Gender counts may not add to totals on previous page due to students who did not identify gender.

FRESHMAN ADMISSIONS: FALL 2004 – 2008
RACE

	2004	2005	2006	2007	2008
Applied					
Non Resident Alien	57	72	60	73	56
Black	330	447	519	846	971
American Indian	9	14	10	32	28
Asian Pacific Islander	158	190	220	291	281
Hispanic	317	400	446	736	788
White	3044	3637	3262	4698	4391
Unknown	37	58	91	214	161
% Non-White*	21.1%	22.4%	26.8%	28.9%	32.0%
Accepted					
Non Resident Alien	48	62	43	56	40
Black	263	388	308	314	377
American Indian	8	13	6	19	11
Asian Pacific Islander	136	172	192	163	166
Hispanic	265	364	345	356	334
White	2608	3266	2895	3103	2634
Unknown	24	49	76	107	94
% Non-White*	20.5%	22.3%	22.7%	21.5%	25.2%
Enrolled					
Non Resident Alien	26	28	22	19	12
Black	93	85	105	110	112
American Indian	4	2	1	3	2
Asian Pacific Islander	35	43	39	27	51
Hispanic	86	94	102	104	110
White	811	957	845	793	829
Unknown	3	17	22	32	35
% Non-White*	21.2%	19.0%	22.6%	23.5%	24.9%

* % Non-White excludes Non-resident Alien Students and students with unknown race.

NEW FRESHMEN ENROLLED FALL 2004 – 2008
TOP FIFTEEN FEEDER HIGH SCHOOLS AND NUMBER OF STUDENTS ENROLLED

	2004	2005	2006	2007	2008
LYNN CLASSICAL HIGH SCHOOL	26	32	37	38	44
PEABODY HIGH SCHOOL	45	50	48	51	43
SALEM HIGH SCHOOL	36	32	44	36	36
MALDEN HIGH SCHOOL		23	23	21	34
DANVERS HIGH SCHOOL	22	14	15	15	28
LYNN ENGLISH HIGH SCHOOL	41	44	27	37	27
GLOUCESTER HIGH SCHOOL	30	17	18	26	25
EVERETT HIGH SCHOOL		23	27	30	24
BEVERLY HIGH SCHOOL	14	19	18	16	23
SAINT MARY REGIONAL HIGH SCHOOL				14	21
SAUGUS HIGH SCHOOL	33	29	18	23	18
REVERE HIGH SCHOOL	22	18	16	23	16
LOWELL HIGH SCHOOL	18			14	14
MELROSE HIGH SCHOOL			15		14
CHELMSFORD HIGH SCHOOL					13
SWAMPSCOTT HIGH SCHOOL					13
NORTHEAST METROTECH HIGH SCHOOL					12
BISHOP FENWICK HIGH SCHOOL	26	22	17	22	
TRITON REGIONAL HIGH SCHOOL	13	17		17	
MEDFORD HIGH SCHOOL	16	27	17		
WAKEFIELD HIGH SCHOOL		26		14	
LAWRENCE HIGH SCHOOL		24			
POPE JOHN XXIII CENTRAL HIGH SCHOOL		21			
MALDEN CATHOLIC HIGH SCHOOL	13				
METHUEN HIGH SCHOOL			15		
READING MEMORIAL HIGH SCHOOL			15		
CENTRAL CATHOLIC HIGH SCHOOL	14				
EAST BOSTON HIGH SCHOOL	13				

**NEW FRESHMEN ENROLLED FALL 2004 – 2008
MAJORS**

	2004	2005	2006	2007	2008
ART	14	16	18	32	17
ATHLETIC TRAINING	NA	NA	NA	NA	7
BIOLOGY	56	76	60	68	64
BUSINESS ADMINISTRATION	170	181	167	170	171
CARTOGRAPHY	4	4	3	1	1
CHEMISTRY	7	6	9	9	15
COMMUNICATIONS	34	50	45	38	44
COMPUTER SCIENCE	23	13	24	21	21
CRIMINAL JUSTICE	78	98	79	67	90
ECONOMICS	2		2	5	1
EDUCATION	99	120	116	93	87
ENGLISH	22	27	21	17	35
GEOGRAPHY	3	6		1	4
GEOLOGICAL SCIENCES		1	3	3	7
HISTORY	17	19	26	11	31
LIBERAL STUDIES	19	15	15	15	9
MATH	4	5	14	8	9
MUSIC		15	16	16	15
NURSING	85	92	98	110	91
POLITICAL SCIENCE	12	8	8	7	10
PSYCHOLOGY	54	67	55	56	69
SOCIAL WORK	17	19	21	18	24
SOCIOLOGY	4	11	10	10	5
SPANISH	1	4	4	2	2
SPORT, FITNESS & LEISURE STUDIES	32	43	59	40	65
THEATRE	34	50	34	35	42
UNDECLARED	267	280	229	235	215

TRANSFER ADMISSIONS: FALL 2004 – 2008

	2004	2005	2006	2007	2008
Applied	1312	1348	1402	1514	1554
Accepted	1219	1248	1271	1321	1364
Enrolled	849	811	780	814	846
Acceptance Rate	92.9%	92.6%	90.7%	87.3%	87.8%
Yield	69.6%	65.0%	61.4%	61.6%	62.0%

APPLIED	2004	2005	2006	2007	2008
Avg Transfer GPA	2.83	2.85	2.89	2.87	2.88

ACCEPTED	2004	2005	2006	2007	2008
Avg Transfer GPA	2.89	2.93	2.98	3.04	3.02

ENROLLED	2004	2005	2006	2007	2008
Avg Transfer GPA	2.85	2.89	2.97	3.03	2.99

TRANSFER ADMISSIONS: FALL 2004 – 2008
GENDER

FEMALE	2004	2005	2006	2007	2008
Applied	789	800	854	943	957
Accepted	745	747	797	844	852
Enrolled	507	476	482	500	516
Acceptance Rate	94.4%	93.4%	93.3%	89.5%	89.0%
Yield	68.1%	63.7%	60.5%	59.2%	60.6%

MALE	2004	2005	2006	2007	2008
Applied	523	546	548	571	597
Accepted	474	500	474	477	512
Enrolled	342	334	298	314	330
Acceptance Rate	90.6%	91.6%	86.5%	83.5%	85.8%
Yield	72.2%	66.8%	62.9%	65.8%	64.5%

% FEMALE	2004	2005	2006	2007	2008
Applied	60.1%	59.4%	60.9%	62.3%	61.6%
Accepted	61.1%	59.9%	62.7%	63.9%	62.5%
Enrolled	59.7%	58.8%	61.8%	61.4%	61.0%

Gender counts may not add to totals on previous page due to students who did not identify gender.

TRANSFER ADMISSIONS: FALL 2004 – 2008
RACE

	2004	2005	2006	2007	2008
Applied					
Non Resident Alien	54	53	55	54	46
Black	96	104	92	139	144
American Indian	7	4	6	5	5
Asian Pacific Islander	33	37	36	39	56
Hispanic	58	58	76	102	95
White	1045	1053	1093	1104	1158
Unknown	19	39	44	71	50
% Non-White*	15.7%	16.2%	16.1%	20.5%	20.6%
Accepted					
Non Resident Alien	51	51	50	47	43
Black	79	95	76	109	115
American Indian	7	4	6	4	5
Asian Pacific Islander	29	36	35	28	50
Hispanic	56	51	69	82	86
White	978	974	993	985	1019
Unknown	19	37	42	66	46
% Non-White*	14.9%	16.0%	15.8%	18.5%	20.1%
Enrolled					
Non Resident Alien	37	30	37	35	34
Black	55	59	43	66	71
American Indian	4	3	4	3	4
Asian Pacific Islander	20	23	25	15	30
Hispanic	39	28	48	55	55
White	682	640	596	603	632
Unknown	12	28	27	37	20
% Non-White*	14.8%	15.0%	16.8%	18.7%	20.2%

* % Non-White excludes Non-resident Alien Students and students with unknown race.

NEW TRANSFERS ENROLLED FALL 2004 – 2008
TOP TEN FEEDER COLLEGES AND # OF STUDENTS ENROLLED

	2004	2005	2006	2007	2008
NORTH SHORE CMTY COLLEGE	154	201	179	189	228
MIDDLESEX CMTY COLLEGE	61	34	53	56	60
BUNKER HILL CMTY COLLEGE	35	37	30	33	46
NORTHERN ESSEX CMTY COLLEGE	54	35	45	43	39
MARIAN COURT COLLEGE	17	21	16	18	17
UNIV MASS BOSTON	15	13	11		14
UNIV MASS LOWELL	12	10	15	15	13
SUFFOLK UNIVERSITY				12	12
MASS BAY CMTY COLLEGE		11	11	14	12
QUINCY COLLEGE	11	10	16	15	12
WESTFIELD STATE COLLEGE	10				11
BRIDGEWATER STATE COLLEGE		10			9
UNIV MASS AMHERST	10	19	16	15	
MERRIMACK COLLEGE			11		
UNIV MASS DARTMOUTH			13		
NORTHEASTERN UNIVERSITY	12	13			
# of Enrolling Transfers from Top Ten	391	414	416	410	473
% of Total Enrolled Transfers from Top Ten	46%	51%	53%	50%	56%
Total Count of Feeder Colleges	164	151	161	170	181

**NEW TRANSFERS ENROLLED FALL 2004 – 2008
MAJORS**

	2004	2005	2006	2007	2008
ART	17	19	19	22	20
ATHLETIC TRAINING	NA	NA	NA	NA	5
BIOLOGY	30	49	44	47	43
BUSINESS ADMINISTRATION	178	168	156	142	187
CARTOGRAPHY	1			1	
CHEMISTRY	8	5	5	9	11
COMMUNICATIONS	32	43	33	27	34
COMPUTER SCIENCE	21	12	10	8	15
CRIMINAL JUSTICE	85	72	70	74	71
ECONOMICS	4	2	5	4	3
EDUCATION	92	78	95	77	87
ENGLISH	25	14	22	28	21
FIRE SCIENCE	8	9	6	6	3
GEOGRAPHY	16	7	4	5	2
GEOLOGICAL SCIENCES	4	4	1	3	5
HISTORY	23	18	26	21	23
LIBERAL STUDIES	9	6	7	25	23
MATH	9	11	5	6	4
MUSIC	1	4	4	6	2
NURSING	58	84	65	70	75
OCCUPATIONAL THERAPY	8	5	4	11	12
POLITICAL SCIENCE	11	7	11	7	13
PSYCHOLOGY	48	52	44	41	40
SOCIAL WORK	19	23	26	31	29
SOCIOLOGY	13	15	19	13	9
SPANISH	5	5	6	3	4
SPORT, FITNESS & LEISURE STUDIES	37	28	29	35	38
THEATRE	10	8	11	18	10
UNDECLARED	77	63	53	74	57

GRADUATE ADMISSIONS: FALL 2004 – 2008

	2004	2005	2006	2007	2008
Applied	443	432	505	552	617
Accepted	383	390	434	468	509
Enrolled	285	273	321	326	386
Acceptance Rate	86.5%	90.3%	85.9%	84.8%	82.5%
Yield	74.4%	70.7%	74.0%	69.7%	75.8%

GRADUATE ADMISSIONS: FALL 2004 – 2008

GENDER

FEMALE	2004	2005	2006	2007	2008
Applied	350	336	383	437	490
Accepted	303	299	334	363	397
Enrolled	229	208	250	250	311
Acceptance Rate	86.6%	89.0%	87.2%	83.1%	81.0%
Yield	75.6%	69.6%	74.9%	68.9%	78.3%

MALE	2004	2005	2006	2007	2008
Applied	93	92	122	115	127
Accepted	80	87	100	105	112
Enrolled	56	61	71	76	75
Acceptance Rate	86.0%	94.6%	82.0%	91.3%	88.2%
Yield	70.0%	70.1%	71.0%	72.4%	67.0%

% FEMALE	2004	2005	2006	2007	2008
Applied	79.0%	78.5%	75.8%	79.2%	79.4%
Accepted	79.1%	77.5%	77.0%	77.6%	78.0%
Enrolled	80.4%	77.3%	77.9%	76.7%	80.6%

Gender counts may not add to totals on previous page due to students who did not identify gender.

GRADUATE ADMISSIONS: FALL 2004 – 2008
RACE

	2004	2005	2006	2007	2008
Applied					
Non Resident Alien	9	10	21	13	20
Black	13	11	10	10	13
American Indian			1	1	
Asian Pacific Islander	7	4	6	3	3
Hispanic	12	14	17	15	17
White	387	355	410	462	506
Unknown	15	38	40	48	58
% Non-White*	7.6%	7.6%	7.7%	5.9%	6.1%
Accepted					
Non Resident Alien	9	9	17	13	16
Black	13	8	6	5	9
American Indian			1	1	
Asian Pacific Islander	6	4	4	3	2
Hispanic	8	13	9	14	9
White	335	320	357	389	422
Unknown	12	36	40	43	51
% Non-White*	7.5%	7.2%	5.3%	5.6%	4.5%
Enrolled					
Non Resident Alien	7	5	12	9	15
Black	11	6	4		7
American Indian			1	1	
Asian Pacific Islander	5	2	4	3	1
Hispanic	8	11	6	10	8
White	245	225	261	271	314
Unknown	9	24	33	32	41
% Non-White*	8.9%	7.8%	5.4%	4.9%	4.8%

* % Non-White excludes Non-resident Alien Students and students with unknown race.

NEW GRADUATE STUDENTS ENROLLED: FALL 2004 – 2008
GRADUATE PROGRAMS

	2004	2005	2006	2007	2008
ART - MAT	1	2	2	1	5
BIOLOGY - MAT		1	1		
BUSINESS - MBA	20	12	11	11	20
CHEMISTRY - MAT		1			1
COUNSELING & PSYCHOLOGICAL SERVICES - MS	11	13	17	12	21
CRIMINAL JUSTICE - MS				6	3
EARLY CHILDHOOD EDUCATION - MED	5	8	3	4	11
EDUCATIONAL LEADERSHIP - MED	2	3	2	1	2
ELEMENTARY EDUCATION - MED	32	25	15	20	18
ENGLISH - MA	7	4	5	11	8
ENGLISH - MA/MAT		2	2	1	2
ENGLISH - MAT	2	5	4	2	10
ENGLISH AS A SECOND LANGUAGE - MAT		1	2	5	12
FIELD BASED - MED			33		1
GENERAL SCIENCE - MAT			2		
GEO-INFORMATION SCIENCE - MS	1	1	2	1	4
HIGHER EDUCATION IN STUDENT AFFAIRS - MED	17	3	15	15	10
HISTORY - MA	6	11	4	9	10
HISTORY - MAT				6	8
INDUSTRIAL/ORGANIZATIONAL PSYCHOLOGY - MS	NA	NA	NA	NA	3
LIBRARY MEDIA STUDIES - MED	2	6	3	22	10
MATHEMATICS - MAT	2	4	3	2	8
MATHEMATICS - MS	1		2	3	3
MIDDLE SCHOOL - MED	9	6	6	7	8
MSN/MBA		1			
NURSING - MSN	2	11	8	5	8
OCCUPATIONAL THERAPY - BS/MS			4	11	5
PHYSICAL EDUCATION - MED	2	6	4	4	3
READING - MED	11	13	9	7	24
SCHOOL COUNSELING -MED	16	12	6	6	9
SECONDARY EDUCATION - MED	19	8	10	3	2
SOCIAL WORK - MSW	84	65	83	77	74
SPANISH - MAT	6	2	3	8	4
SPECIAL EDUCATION - MED	22	20	25	31	33
TECHNOLOGY IN EDUCATION - MED	1	2	2	3	2
CAGS - EDUCATION	3	10	4	10	19
ADVANCED PROFESSIONAL STUDIES - COUNSELING	1	1	1	2	4
CERTIFICATES/LICENSURE PROGRAMS		14	28	20	21

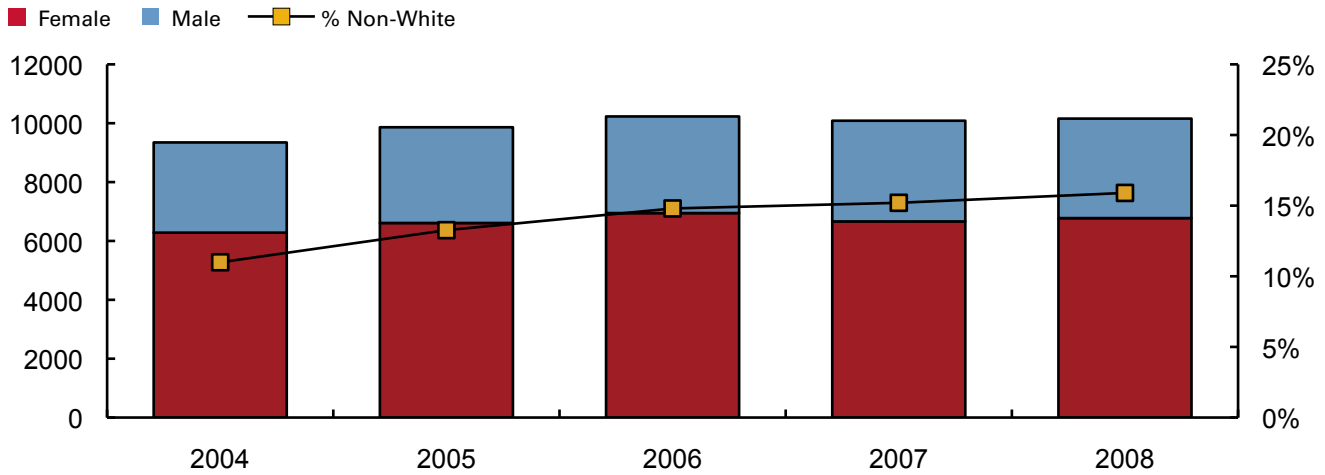
enrollment

**Enrollment
At a Glance
2004 – 2008**

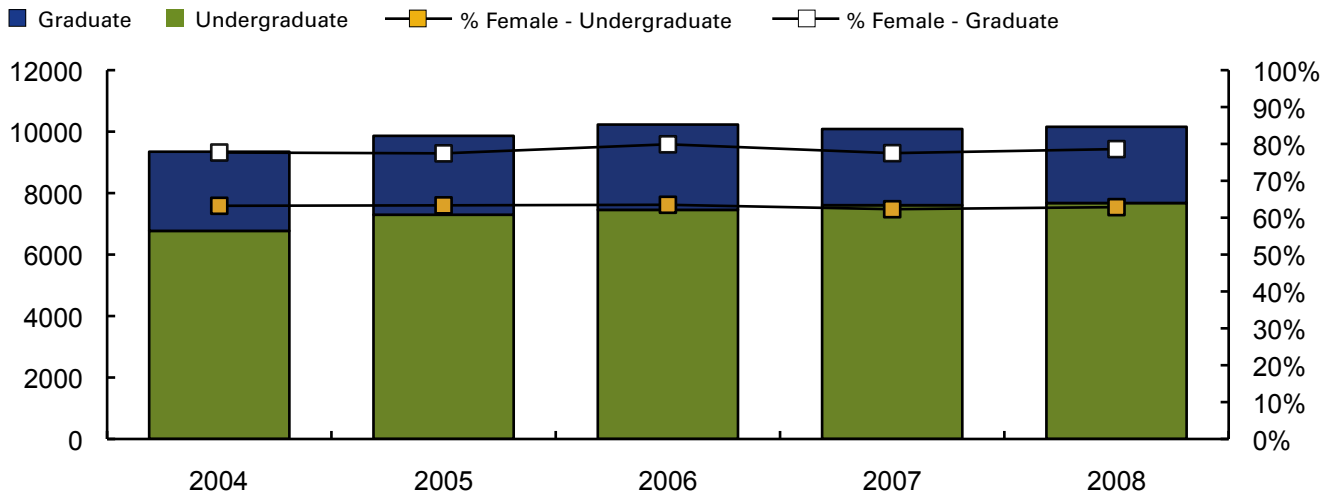


ENROLLMENT: FALL 2004 – 2008

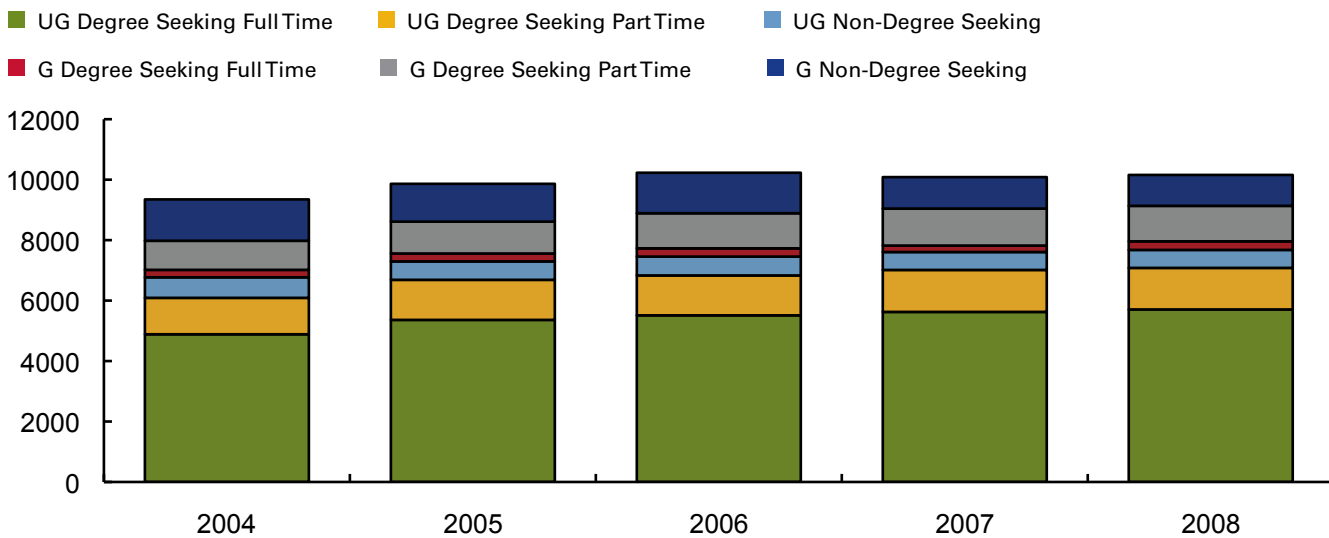
All College Headcount Fall Enrollment Demographics



All College Headcount with Percent Female by Undergraduate/Graduate

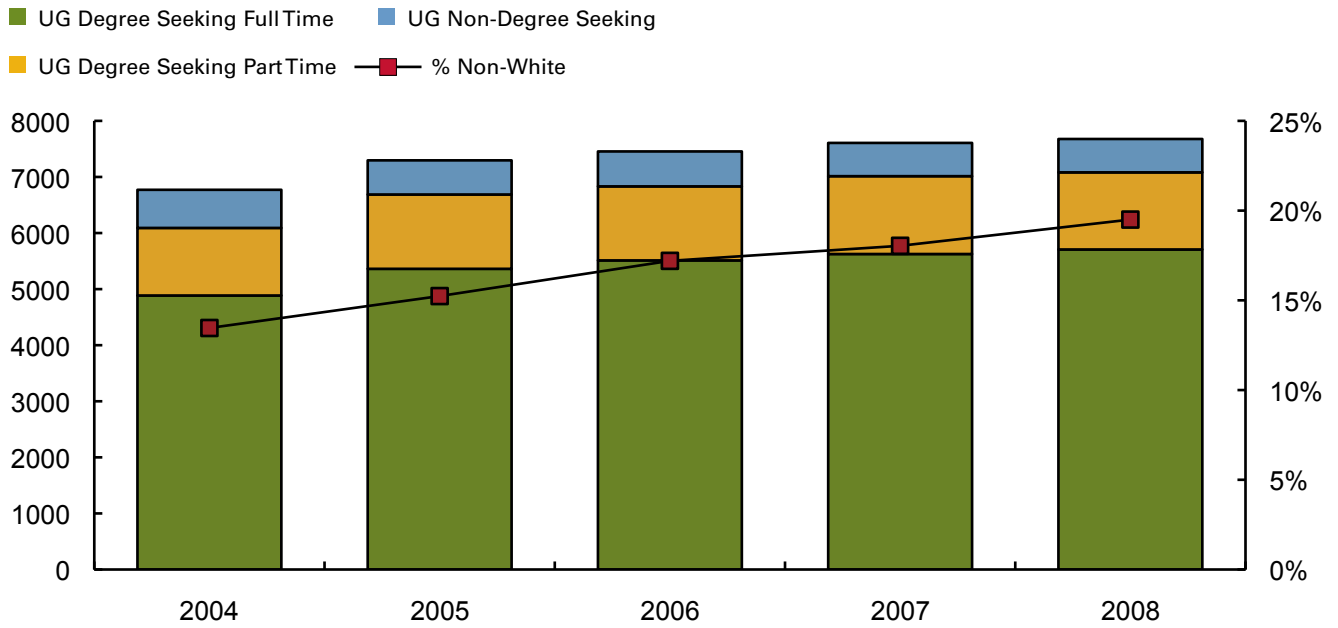


All College Headcount by Level and Attendance Status

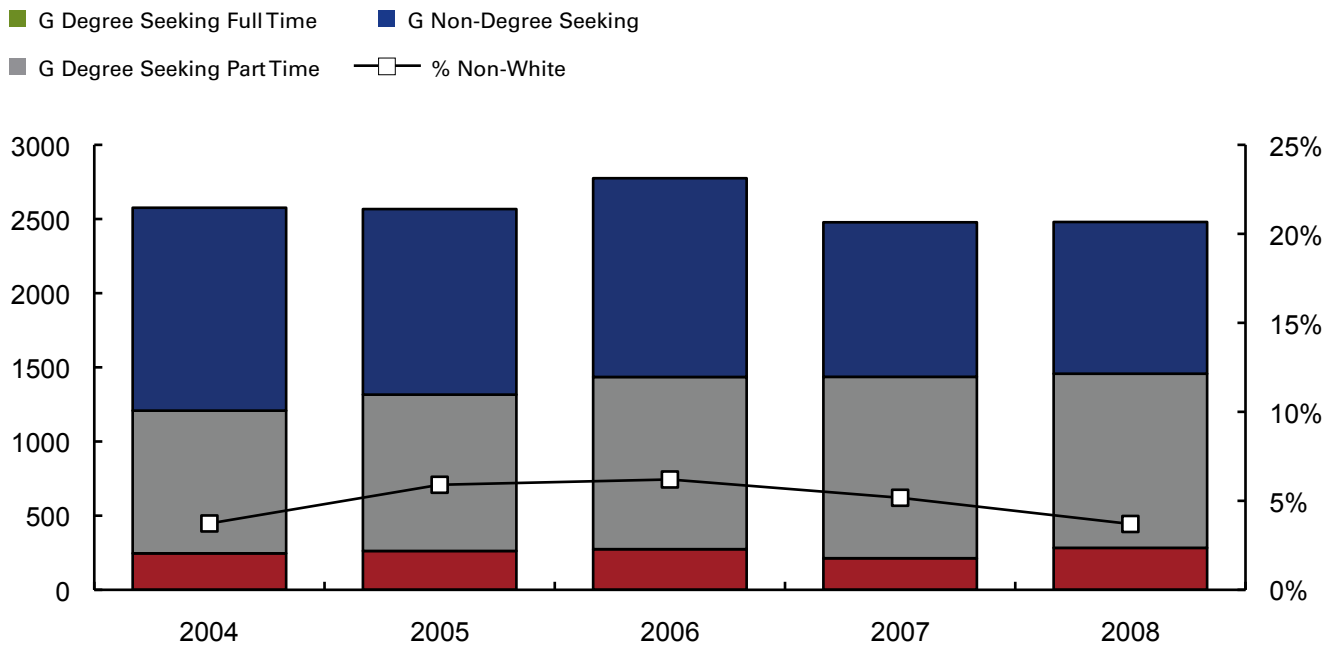


ENROLLMENT: FALL 2004 – 2008

Undergraduate Headcount by Attendance Status and Percent Non-White



Graduate Headcount by Attendance Status and Percent Non-White



LEFT BLANK INTENTIONALLY

enrollment

**Enrollment
2004 – 2008
Tables**



**ALL COLLEGE FALL HEADCOUNT 2004 – 2008
BY GENDER AND RACE**

	2004	2005	2006	2007	2008
Female					
Non Resident Alien	212	214	214	191	196
Black	222	282	353	381	417
American Indian	18	16	23	22	15
Asian Pacific Islander	116	150	167	139	154
Hispanic	246	306	348	351	384
White	4944	4839	4917	5002	5156
Unknown	524	803	925	577	454
Female Total	6282	6610	6947	6663	6776
% Non-White*	10.9%	13.5%	15.3%	15.1%	15.8%
% Female	67.2%	67.0%	67.9%	66.1%	66.7%
Male					
Non Resident Alien	172	166	175	175	174
Black	147	171	185	215	225
American Indian	12	13	11	8	9
Asian Pacific Islander	36	52	54	69	80
Hispanic	109	126	140	175	173
White	2394	2459	2468	2584	2548
Unknown	195	266	250	196	172
Male Total	3065	3253	3283	3422	3381
% Non-White*	11.3%	12.8%	13.6%	15.3%	16.0%
% Male	32.8%	33.0%	32.1%	33.9%	33.3%
Total					
Non Resident Alien	384	380	389	366	370
Black	369	453	538	596	642
American Indian	30	29	34	30	24
Asian Pacific Islander	152	202	221	208	234
Hispanic	355	432	488	526	557
White	7338	7298	7385	7586	7704
Unknown	719	1069	1175	773	626
Total	9347	9863	10230	10085	10157
% Non-White*	11.0%	13.3%	14.8%	15.2%	15.9%

* % Non-White excludes Non-resident Alien Students and students with unknown race.

FALL UNDERGRADUATE HEADCOUNT 2004 – 2008 BY GENDER AND RACE

	2004	2005	2006	2007	2008
Female					
Non Resident Alien	184	178	177	160	154
Black	200	254	320	354	397
American Indian	15	14	18	18	13
Asian Pacific Islander	106	137	153	125	146
Hispanic	217	262	303	314	354
White	3380	3558	3506	3568	3594
Unknown	179	219	254	203	168
Female Total	4281	4622	4731	4742	4826
% Non-White*	13.7%	15.8%	18.5%	18.5%	20.2%
% Female	63.2%	63.3%	63.5%	62.3%	62.9%
Male					
Non Resident Alien	152	150	159	159	155
Black	137	164	177	210	213
American Indian	12	13	9	8	9
Asian Pacific Islander	34	46	49	62	77
Hispanic	107	121	133	167	171
White	1944	2066	2077	2148	2118
Unknown	104	114	120	111	108
Male Total	2490	2674	2724	2865	2851
% Non-White*	13.0%	14.3%	15.1%	17.2%	18.2%
% Male	36.8%	36.7%	36.5%	37.7%	37.1%
Total					
Non Resident Alien	336	328	336	319	309
Black	337	418	497	564	610
American Indian	27	27	27	26	22
Asian Pacific Islander	140	183	202	187	223
Hispanic	324	383	436	481	525
White	5324	5624	5583	5716	5712
Unknown	283	333	374	314	276
Total	6771	7296	7455	7607	7677
% Non-White*	13.5%	15.2%	17.2%	18.0%	19.5%

* % Non-White excludes Non-resident Alien Students and students with unknown race.

FALL UNDERGRADUATE HEADCOUNT 2004 – 2008
TOTAL DEGREE SEEKING

	2004	2005	2006	2007	2008
Female					
Non Resident Alien	139	148	147	142	126
Black	192	250	311	343	389
American Indian	15	14	17	18	13
Asian Pacific Islander	102	132	151	122	141
Hispanic	202	252	296	307	346
White	3112	3342	3287	3328	3335
Unknown	131	136	162	148	131
Female Total	3893	4274	4371	4408	4481
% Non-White*	14.1%	16.2%	19.1%	19.2%	21.0%
% Female	63.9%	63.9%	64.0%	62.8%	63.3%
% of Female Undergraduates	90.9%	92.5%	92.4%	93.0%	92.9%
Male					
Non Resident Alien	119	126	131	134	127
Black	127	159	169	199	202
American Indian	12	13	8	7	8
Asian Pacific Islander	33	45	48	61	75
Hispanic	103	114	128	159	165
White	1740	1897	1909	1960	1939
Unknown	64	59	68	86	85
Male Total	2198	2413	2461	2606	2601
% Non-White*	13.6%	14.9%	15.6%	17.9%	18.8%
% Male	36.1%	36.1%	36.0%	37.2%	36.7%
% of Male Undergraduates	88.3%	90.2%	90.3%	91.0%	91.2%
Total					
Non Resident Alien	258	274	278	276	253
Black	319	409	480	542	591
American Indian	27	27	25	25	21
Asian Pacific Islander	135	177	199	183	216
Hispanic	305	366	424	466	511
White	4852	5239	5196	5288	5274
Unknown	195	195	230	234	216
Total	6091	6687	6832	7014	7082
% Non-White*	13.9%	15.7%	17.8%	18.7%	20.2%
% of Undergraduate Headcount	90.0%	91.7%	91.6%	92.2%	92.2%

* % Non-White excludes Non-resident Alien Students and students with unknown race.

FALL UNDERGRADUATE HEADCOUNT 2004 – 2008
FULL TIME DEGREE SEEKING

	2004	2005	2006	2007	2008
Female					
Non Resident Alien	110	117	122	107	93
Black	159	206	248	253	287
American Indian	11	12	9	8	8
Asian Pacific Islander	89	109	118	96	106
Hispanic	166	201	237	247	283
White	2439	2658	2615	2667	2657
Unknown	83	78	103	102	95
Female Total	3057	3381	3452	3480	3529
% Non-White*	14.8%	16.6%	19.0%	18.5%	20.5%
% Female	62.6%	63.1%	62.6%	61.9%	61.8%
% of Female Degree Seeking Undergraduates	78.5%	79.1%	79.0%	78.9%	78.8%
% of Female Undergraduates	71.4%	73.2%	73.0%	73.4%	73.1%
Male					
Non Resident Alien	107	111	116	113	107
Black	107	128	143	154	155
American Indian	10	8	5	4	6
Asian Pacific Islander	30	39	39	50	62
Hispanic	84	94	120	135	144
White	1450	1557	1590	1627	1632
Unknown	41	44	47	63	72
Male Total	1829	1981	2060	2146	2178
% Non-White*	13.7%	14.7%	16.2%	17.4%	18.4%
% Male	37.4%	36.9%	37.4%	38.1%	38.2%
% of Male Degree Seeking Undergraduates	83.2%	82.1%	83.7%	82.3%	83.7%
% of Male Undergraduates	73.5%	74.1%	75.6%	74.9%	76.4%
Total					
Non Resident Alien	217	228	238	220	200
Black	266	334	391	407	442
American Indian	21	20	14	12	14
Asian Pacific Islander	119	148	157	146	168
Hispanic	250	295	357	382	427
White	3889	4215	4205	4294	4289
Unknown	124	122	150	165	167
Total	4886	5362	5512	5626	5707
% Non-White*	14.4%	15.9%	17.9%	18.1%	19.7%
% of Degree Seeking Undergraduates	80.2%	80.2%	80.7%	80.2%	80.6%
% of Undergraduate Headcount	72.2%	73.5%	73.9%	74.0%	74.3%

* % Non-White excludes Non-resident Alien Students and students with unknown race.

FALL UNDERGRADUATE HEADCOUNT 2004 – 2008
PART TIME DEGREE SEEKING

	2004	2005	2006	2007	2008
Female					
Non Resident Alien	29	31	25	35	33
Black	33	44	63	90	102
American Indian	4	2	8	10	5
Asian Pacific Islander	13	23	33	26	35
Hispanic	36	51	59	60	63
White	673	684	672	661	678
Unknown	48	58	59	46	36
Female Total	836	893	919	928	952
% Non-White*	11.3%	14.9%	19.5%	22.0%	23.2%
% Female	69.4%	67.4%	69.6%	66.9%	69.2%
% of Female Degree Seeking Undergraduates	21.5%	20.9%	21.0%	21.1%	21.2%
% of Female Undergraduates	19.5%	19.3%	19.4%	19.6%	19.7%
Male					
Non Resident Alien	12	15	15	21	20
Black	20	31	26	45	47
American Indian	2	5	3	3	2
Asian Pacific Islander	3	6	9	11	13
Hispanic	19	20	8	24	21
White	290	340	319	333	307
Unknown	23	15	21	23	13
Male Total	369	432	401	460	423
% Non-White*	13.2%	15.4%	12.6%	20.0%	21.3%
% Male	30.6%	32.6%	30.4%	33.1%	30.8%
% of Male Degree Seeking Undergraduates	16.8%	17.9%	16.3%	17.7%	16.3%
% of Male Undergraduates	14.8%	16.2%	14.7%	16.1%	14.8%
Total					
Non Resident Alien	41	46	40	56	53
Black	53	75	89	135	149
American Indian	6	7	11	13	7
Asian Pacific Islander	16	29	42	37	48
Hispanic	55	71	67	84	84
White	963	1024	991	994	985
Unknown	71	73	80	69	49
Total	1205	1325	1320	1388	1375
% Non-White*	11.9%	15.1%	17.4%	21.3%	22.6%
% of Degree Seeking Undergraduates	19.8%	19.8%	19.3%	19.8%	19.4%
% of Undergraduate Headcount	17.8%	18.2%	17.7%	18.2%	17.9%

* % Non-White excludes Non-resident Alien Students and students with unknown race.

FALL UNDERGRADUATE HEADCOUNT 2004 – 2008
NON-DEGREE SEEKING

	2004	2005	2006	2007	2008
Female					
Non Resident Alien	45	30	30	18	28
Black	8	4	9	11	8
American Indian	0	0	1	0	0
Asian Pacific Islander	4	5	2	3	5
Hispanic	15	10	7	7	8
White	268	216	219	240	259
Unknown	48	83	92	55	37
Female Total	388	348	360	334	345
% Non-White*	9.2%	8.1%	8.0%	8.0%	7.5%
% Female	57.1%	57.1%	57.8%	56.3%	58.0%
% of Female Undergraduates	9.1%	7.5%	7.6%	7.0%	7.1%
Male					
Non Resident Alien	33	24	28	25	28
Black	10	5	8	11	11
American Indian	0	0	1	1	1
Asian Pacific Islander	1	1	1	1	2
Hispanic	4	7	5	8	6
White	204	169	168	188	179
Unknown	40	55	52	25	23
Male Total	292	261	263	259	250
% Non-White*	6.8%	7.1%	8.2%	10.0%	10.1%
% Male	42.9%	42.9%	42.2%	43.7%	42.0%
% of Male Undergraduates	11.7%	9.8%	9.7%	9.0%	8.8%
Total					
Non Resident Alien	78	54	58	43	56
Black	18	9	17	22	19
American Indian	0	0	2	1	1
Asian Pacific Islander	5	6	3	4	7
Hispanic	19	17	12	15	14
White	472	385	387	428	438
Unknown	88	138	144	80	60
Total	680	609	623	593	595
% Non-White*	8.2%	7.7%	8.1%	8.9%	8.6%
% of Undergraduate Headcount	10.0%	8.3%	8.4%	7.8%	7.8%

* % Non-White excludes Non-resident Alien Students and students with unknown race.

**FALL GRADUATE HEADCOUNT 2004 – 2008
BY GENDER AND RACE**

	2004	2005	2006	2007	2008
Female					
Non Resident Alien	28	36	37	31	42
Black	22	28	33	27	20
American Indian	3	2	5	4	2
Asian Pacific Islander	10	13	14	14	8
Hispanic	29	44	45	37	30
White	1564	1281	1411	1434	1562
Unknown	345	584	671	374	286
Female Total	2001	1988	2216	1921	1950
% Non-White*	3.9%	6.4%	6.4%	5.4%	3.7%
% Female	77.7%	77.4%	79.9%	77.5%	78.6%
Male					
Non Resident Alien	20	16	16	16	19
Black	10	7	8	5	12
American Indian	0	0	2	0	0
Asian Pacific Islander	2	6	5	7	3
Hispanic	2	5	7	8	2
White	450	393	391	436	430
Unknown	91	152	130	85	64
Male Total	575	579	559	557	530
% Non-White*	3.0%	4.4%	5.3%	4.4%	3.8%
% Male	22.3%	22.6%	20.1%	22.5%	21.4%
Total					
Non Resident Alien	48	52	53	47	61
Black	32	35	41	32	32
American Indian	3	2	7	4	2
Asian Pacific Islander	12	19	19	21	11
Hispanic	31	49	52	45	32
White	2014	1674	1802	1870	1992
Unknown	436	736	801	459	350
Total	2576	2567	2775	2478	2480
% Non-White*	3.7%	5.9%	6.2%	5.2%	3.7%

* % Non-White excludes Non-resident Alien Students and students with unknown race.

FALL GRADUATE HEADCOUNT 2004 – 2008
TOTAL DEGREE SEEKING

	2004	2005	2006	2007	2008
Female					
Non Resident Alien	16	23	26	22	29
Black	20	20	23	19	18
American Indian	2	2	3	2	1
Asian Pacific Islander	9	9	12	10	6
Hispanic	18	28	28	29	26
White	786	807	899	941	965
Unknown	72	122	142	85	93
Female Total	923	1011	1133	1108	1138
% Non-White*	5.9%	6.8%	6.8%	6.0%	5.0%
% Female	76.4%	76.8%	79.0%	77.2%	78.1%
% of Female Graduate Students	46.1%	50.9%	51.1%	57.7%	58.4%
Male					
Non Resident Alien	13	10	12	9	11
Black	8	6	3	3	4
American Indian	0	0	0	0	0
Asian Pacific Islander	2	4	4	4	2
Hispanic	2	3	5	5	2
White	229	236	236	278	271
Unknown	31	46	42	29	29
Male Total	285	305	302	328	319
% Non-White*	5.0%	5.2%	4.8%	4.1%	2.9%
% Male	23.6%	23.2%	21.0%	22.8%	21.9%
% of Male Graduate Students	49.6%	52.7%	54.0%	58.9%	60.2%
Total					
Non Resident Alien	29	33	38	31	40
Black	28	26	26	22	22
American Indian	2	2	3	2	1
Asian Pacific Islander	11	13	16	14	8
Hispanic	20	31	33	34	28
White	1015	1043	1135	1219	1236
Unknown	103	168	184	114	122
Total	1208	1316	1435	1436	1457
% Non-White*	5.7%	6.5%	6.4%	5.6%	4.6%
% of Graduate Headcount	46.9%	51.3%	51.7%	57.9%	58.8%

* % Non-White excludes Non-resident Alien Students and students with unknown race.

FALL GRADUATE HEADCOUNT 2004 – 2008
FULL TIME DEGREE SEEKING

	2004	2005	2006	2007	2008
Female					
Non Resident Alien	10	18	18	12	17
Black	7	5	12	4	5
American Indian	1	0	1	1	1
Asian Pacific Islander	4	4	2	2	1
Hispanic	3	8	4	6	4
White	155	151	160	134	173
Unknown	9	18	28	7	15
Female Total	189	204	225	166	216
% Non-White*	8.8%	10.1%	10.6%	8.8%	6.0%
% Female	76.8%	77.9%	82.1%	77.9%	76.3%
% of Female Degree Seeking Graduate Students	20.5%	20.2%	19.9%	15.0%	19.0%
% of Female Graduate Students	9.4%	10.3%	10.2%	8.6%	11.1%
Male					
Non Resident Alien	10	5	8	4	5
Black	4	3	2	1	1
American Indian	0	0	0	0	0
Asian Pacific Islander	0	2	2	0	1
Hispanic	1	0	0	0	1
White	39	39	32	39	51
Unknown	3	9	5	3	8
Male Total	57	58	49	47	67
% Non-White*	11.4%	11.4%	11.1%	2.5%	5.6%
% Male	23.2%	22.1%	17.9%	22.1%	23.7%
% of Male Degree Seeking Graduate Students	20.0%	19.0%	16.2%	14.3%	21.0%
% of Male Graduate Students	9.9%	10.0%	8.8%	8.4%	12.6%
Total					
Non Resident Alien	20	23	26	16	22
Black	11	8	14	5	6
American Indian	1	0	1	1	1
Asian Pacific Islander	4	6	4	2	2
Hispanic	4	8	4	6	5
White	194	190	192	173	224
Unknown	12	27	33	10	23
Total	246	262	274	213	283
% Non-White*	9.3%	10.4%	10.7%	7.5%	5.9%
% of Degree Seeking Graduate Students	20.4%	19.9%	19.1%	14.8%	19.4%
% of Graduate Headcount	9.5%	10.2%	9.9%	8.6%	11.4%

* % Non-White excludes Non-resident Alien Students and students with unknown race.

FALL GRADUATE HEADCOUNT 2004 – 2008
PART TIME DEGREE SEEKING

	2004	2005	2006	2007	2008
Female					
Non Resident Alien	6	5	8	10	12
Black	13	15	11	15	13
American Indian	1	2	2	1	0
Asian Pacific Islander	5	5	10	8	5
Hispanic	15	20	24	23	22
White	631	656	739	807	792
Unknown	63	104	114	78	78
Female Total	734	807	908	942	922
% Non-White*	5.1%	6.0%	6.0%	5.5%	4.8%
% Female	76.3%	76.6%	78.2%	77.0%	78.5%
% of Female Degree Seeking Graduate Students	79.5%	79.8%	80.1%	85.0%	81.0%
% of Female Graduate Students	36.7%	40.6%	41.0%	49.0%	47.3%
Male					
Non Resident Alien	3	5	4	5	6
Black	4	3	1	2	3
American Indian	0	0	0	0	0
Asian Pacific Islander	2	2	2	4	1
Hispanic	1	3	5	5	1
White	190	197	204	239	220
Unknown	28	37	37	26	21
Male Total	228	247	253	281	252
% Non-White*	3.6%	3.9%	3.8%	4.4%	2.2%
% Male	23.7%	23.4%	21.8%	23.0%	21.5%
% of Male Degree Seeking Graduate Students	80.0%	81.0%	83.8%	85.7%	79.0%
% of Male Graduate Students	39.7%	42.7%	45.3%	50.4%	47.5%
Total					
Non Resident Alien	9	10	12	15	18
Black	17	18	12	17	16
American Indian	1	2	2	1	0
Asian Pacific Islander	7	7	12	12	6
Hispanic	16	23	29	28	23
White	821	853	943	1046	1012
Unknown	91	141	151	104	99
Total	962	1054	1161	1223	1174
% Non-White*	4.8%	5.5%	5.5%	5.3%	4.3%
% of Degree Seeking Graduate Students	79.6%	80.1%	80.9%	85.2%	80.6%
% of Graduate Headcount	37.3%	41.1%	41.8%	49.4%	47.3%

* % Non-White excludes Non-resident Alien Students and students with unknown race.

FALL GRADUATE HEADCOUNT 2004 – 2008
NON-DEGREE SEEKING

	2004	2005	2006	2007	2008
Female					
Non Resident Alien	12	13	11	9	13
Black	2	8	10	8	2
American Indian	1	0	2	2	1
Asian Pacific Islander	1	4	2	4	2
Hispanic	11	16	17	8	4
White	778	474	512	493	597
Unknown	273	462	529	289	193
Female Total	1078	977	1083	813	812
% Non-White*	1.9%	5.6%	5.7%	4.3%	1.5%
% Female	78.8%	78.1%	80.8%	78.0%	79.4%
% of Female Graduate Students	53.9%	49.1%	48.9%	42.3%	41.6
Male					
Non Resident Alien	7	6	4	7	8
Black	2	1	5	2	8
American Indian	0	0	2	0	0
Asian Pacific Islander	0	2	1	3	1
Hispanic	0	2	2	3	0
White	221	157	155	158	159
Unknown	60	106	88	56	35
Male Total	290	274	257	229	211
% Non-White*	0.9%	3.1%	6.1%	4.8%	5.4%
% Male	21.2%	21.9%	19.2%	22.0%	20.6%
% of Male Graduate Students	50.4%	47.3%	46.0%	41.1%	39.8%
Total					
Non Resident Alien	19	19	15	16	21
Black	4	9	15	10	10
American Indian	1	0	4	2	1
Asian Pacific Islander	1	6	3	7	3
Hispanic	11	18	19	11	4
White	999	631	667	651	756
Unknown	333	568	617	345	228
Total	1368	1251	1340	1042	1023
% Non-White*	1.7%	5.0%	5.8%	4.4%	2.3%
% of Graduate Headcount	53.1%	48.7%	48.3%	42.1%	41.3%

* % Non-White excludes Non-resident Alien Students and students with unknown race.

ANNUAL ENROLLMENT FY2004 – 2008

	FY2004	FY2005	FY2006	FY2007	FY2008
Headcount					
Undergraduate	8679	8723	9073	9250	9321
Graduate	7014	6658	6934	6498	6424
Both*	77	41	46	75	81
Headcount Total	15770	15422	16053	15823	15826
FTE					
Undergraduate	5567	5887	6286	6544	6561
Graduate	1773	1786	1909	1919	1931
FTE Total	7340	7673	8195	8463	8492

**FALL UNDERGRADUATE HEADCOUNT 2004 – 2008
BY MAJOR**

	2004	2005	2006	2007	2008
ART	201	191	180	192	188
ATHLETIC TRAINING	NA	NA	NA	NA	56
BIOLOGY	275	317	325	353	368
BUSINESS ADMINISTRATION	1149	1249	1282	1301	1338
CARTOGRAPHY	22	18	20	18	12
CHEMISTRY	45	48	57	57	62
COMMUNICATIONS	292	310	320	322	348
COMPUTER SCIENCE	122	99	94	89	94
CRIMINAL JUSTICE	457	492	509	529	540
ECONOMICS	19	16	21	33	32
EDUCATION	761	791	752	749	676
ENGLISH	223	217	213	242	271
FIRE SCIENCE	36	31	37	37	28
GENERAL/LIBERAL STUDIES	48	59	85	112	124
GEOGRAPHY	98	93	82	78	88
GEOLOGICAL SCIENCES	22	24	34	49	69
HISTORY	185	217	255	235	253
MATH	71	73	69	56	63
MUSIC	13	49	66	77	75
NURSING	576	714	808	881	898
OCCUPATIONAL THERAPY	34	29	22	28	38
POLITICAL SCIENCE	74	73	73	74	84
PSYCHOLOGY	434	484	453	468	458
SOCIAL WORK	124	143	174	170	203
SOCIOLOGY	158	183	179	185	170
SPANISH	33	36	46	45	49
SPORT, FITNESS & LEISURE STUDIES	225	272	299	317	276
THEATRE	165	178	172	173	159
UNDECLARED	590	646	576	594	492

**FALL GRADUATE HEADCOUNT 2004 – 2008
BY PROGRAM**

	2004	2005	2006	2007	2008
ART - MAT	9	15	18	14	7
BILINGUAL EDUCATION - MED	3	1		1	
BIOLOGY - MAT		2	8	7	4
BUSINESS - MBA	65	74	78	59	59
CHEMISTRY - MAT	2	1	1	1	4
COUNSELING & PSYCHOLOGICAL SERVICES - MS	48	61	58	57	67
CRIMINAL JUSTICE - MS	NA	NA	6	14	11
EARLY CHILDHOOD EDUCATION - MED	31	34	28	38	41
EDUCATIONAL LEADERSHIP - MED	21	17	15	8	15
ELEMENTARY EDUCATION - MED	138	148	137	115	101
ENGLISH - MA	32	24	25	38	38
ENGLISH - MA/MAT	8	9	17	21	14
ENGLISH - MAT	19	18	19	25	29
ENGLISH AS A SECOND LANGUAGE - MAT	26	19	20	18	25
FIELD BASED - MED	4	1	9	14	30
GENERAL SCIENCE - MAT	NA	NA	2	3	1
GEO-INFORMATION SCIENCE - MS	8	7	6	8	10
HIGHER EDUCATION IN STUDENT AFFAIRS - MED	17	26	26	32	34
HISTORY - MA	29	38	36	47	36
HISTORY - MAT	11	7	8	18	23
INDUSTRIAL/ORGANIZATIONAL PSYCHOLOGY - MS	NA	NA	NA	NA	4
LIBRARY MEDIA STUDIES - MED	16	19	19	32	33
MATHEMATICS - MAT	4	5	10	12	13
MATHEMATICS - MS	7	6	16	12	11
MIDDLE SCHOOL MATH - MAT	NA	9	10	10	8
MIDDLE SCHOOL - MED	41	37	25	34	28
MSN/MBA	1	2	1	2	1
NURSING - MSN	24	44	67	67	82
NURSING - RN/MSN	1		1	2	4
OCCUPATIONAL THERAPY - MS			5	16	17
PHYSICAL EDUCATION - MED	12	19	24	24	30
READING - MED	65	80	104	64	74
SCHOOL BUSINESS OFFICER		1	2	1	
SCHOOL COUNSELING - MED	57	55	53	46	34
SECONDARY EDUCATION - MED	84	57	42	40	22
SOCIAL WORK - MSW	234	217	229	217	211
SPANISH - MAT	8	11	20	27	29
SPECIAL EDUCATION - MED	139	145	138	145	161
TECHNOLOGY IN EDUCATION - MED	15	18	11	13	11
CAGS - EDUCATION	66	89	84	73	91
ADVANCED PROFESSIONAL STUDIES - COUNSELING	2	5	4	6	5
CERTIFICATES/LICENSURE PROGRAMS	18	33	53	52	53

LEFT BLANK INTENTIONALLY

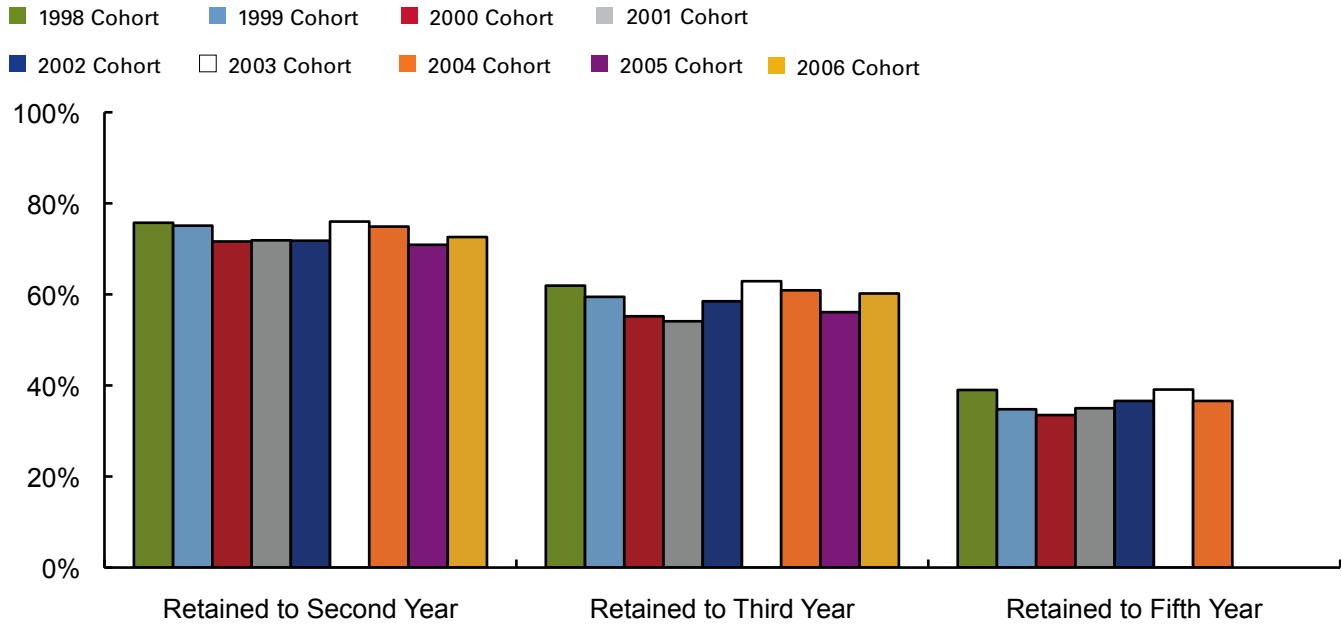
outcomes

**Retention and
Completion
At a Glance
2004 – 2008**



RETENTION AND COMPLETION

Undergraduate Cohort Retention

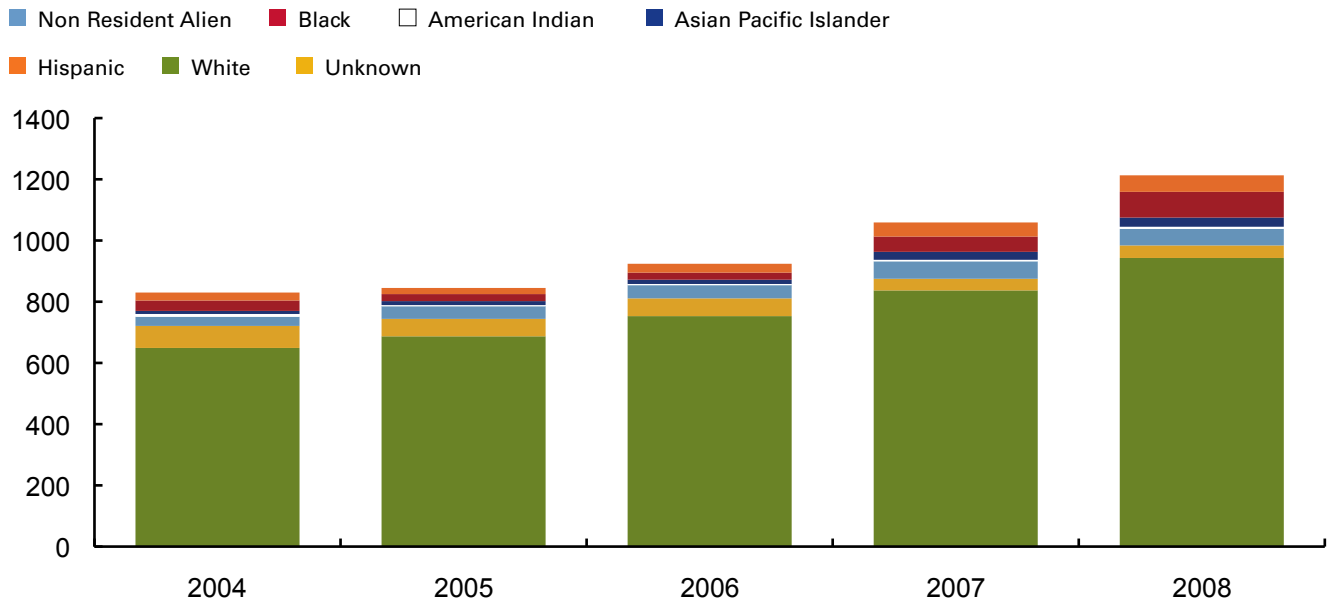


First Year Retention and 4-6 year Graduation Rates Cohorts 1998 – 2004

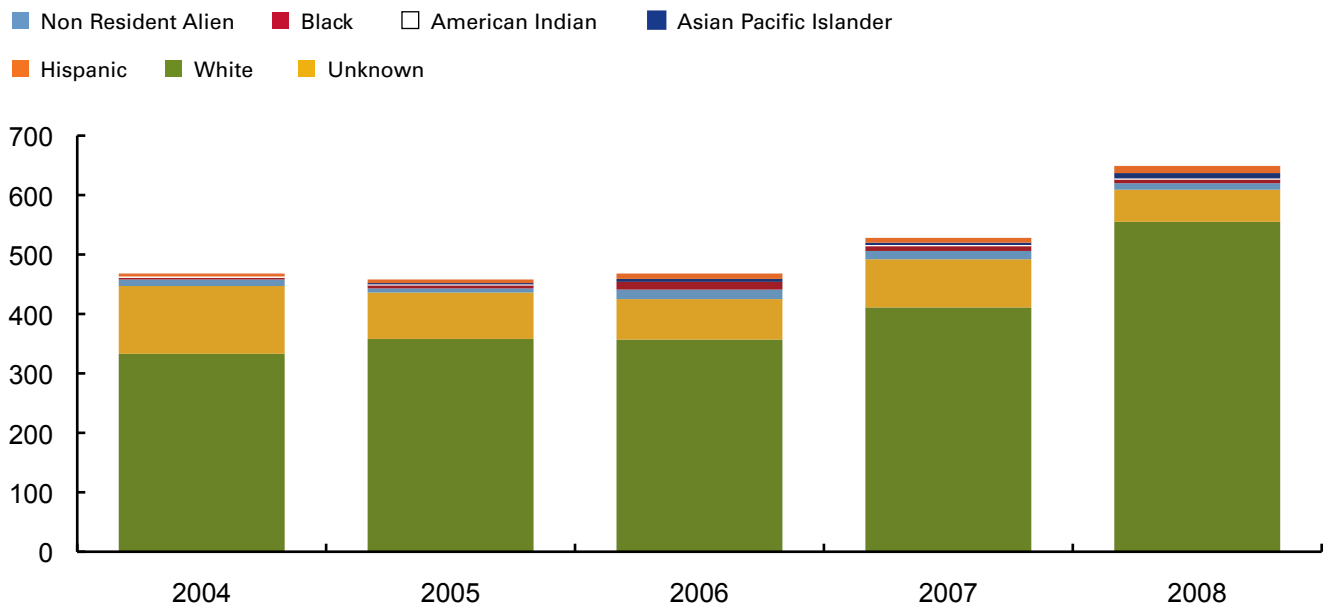


RETENTION AND COMPLETION

Undergraduate Degrees Conferred, by Race, 2004 – 2008



Graduate Degrees Conferred, by Race, 2004 – 2008



LEFT BLANK INTENTIONALLY

outcomes

**Retention and
Completion
2004 – 2008
Tables**



RETENTION AND CONTINUATION TOTAL AND BY GENDER

Cohort Type	Cohort Year	Headcount	Retention Rate	% Continued			
				to 3rd Year	to 5th Year	to 6th Year	to 7th Year
Total Cohort	1998	746	75.7%	61.9%	39.0%	11.5%	4.2%
	1999	486	75.1%	59.5%	34.8%	10.5%	5.8%
	2000	585	71.6%	55.2%	33.5%	10.8%	4.8%
	2001	825	71.9%	54.1%	35.0%	12.2%	4.5%
	2002	837	71.8%	58.5%	36.6%	13.7%	4.8%
	2003	994	76.0%	62.9%	39.1%	12.9%	
	2004	1022	74.9%	60.9%	36.6%		
	2005	1208	70.9%	56.1%			
	2006	1129	72.6%	60.2%			
2007	1064	70.9%					
Female	1998	468	76.7%	63.2%	39.1%	9.8%	3.8%
	1999	310	78.1%	62.3%	35.8%	11.3%	6.1%
	2000	376	74.7%	57.7%	35.6%	9.6%	3.5%
	2001	522	71.1%	55.2%	37.0%	11.3%	4.4%
	2002	562	73.7%	61.4%	37.7%	13.0%	4.4%
	2003	624	75.2%	62.0%	37.7%	12.3%	
	2004	654	78.0%	64.5%	38.5%		
	2005	803	71.7%	57.7%			
	2006	712	73.6%	61.8%			
2007	644	72.4%					
Male	1998	278	74.1%	59.7%	38.8%	14.4%	4.7%
	1999	176	69.9%	54.5%	33.0%	10.2%	5.1%
	2000	206	66.0%	51.0%	30.1%	13.1%	7.3%
	2001	303	73.3%	52.2%	31.7%	13.9%	4.6%
	2002	275	68.0%	52.7%	34.2%	15.3%	5.5%
	2003	370	77.3%	64.3%	41.6%	13.8%	
	2004	368	69.3%	54.4%	33.2%		
	2005	405	69.1%	53.1%			
	2006	417	71.0%	57.6%			
2007	420	68.6%					

RETENTION AND CONTINUATION BY RACE

Cohort Type	Cohort Year	Headcount	Retention Rate	% Continued			
				to 3rd Year	to 5th Year	to 6th Year	to 7th Year
Black	1998	44	86.4%	79.5%	43.2%	18.2%	8.7%
	1999	24	70.8%	62.5%	45.8%	20.8%	0.0%
	2000	27	66.7%	37.0%	25.9%	11.1%	7.4%
	2001	12	58.3%	33.3%	41.7%	25.0%	8.3%
	2002	23	78.3%	60.9%	43.5%	30.4%	4.3%
	2003	61	80.3%	63.9%	45.9%	9.8%	
	2004	89	84.3%	61.8%	36.0%		
	2005	83	71.1%	53.0%			
	2006	105	76.2%	58.1%			
2007	108	76.9%					
American Indian	1998	6	33.3%	33.3%	16.7%	16.7%	0.0%
Alaskan Native*	2000	14	71.4%	57.1%	28.6%	14.3%	7.1%
	2003	6	66.7%	66.7%	33.3%	0.0%	
	2004	4	75.0%	25.0%			
Asian Pacific Islander	1998	21	71.4%	61.9%	42.9%	14.3%	4.8%
	1999	18	66.7%	50.0%	16.7%	5.6%	0.0%
	2000	4	100.0%	75.0%	75.0%	25.0%	25.0%
	2001	7	100.0%	100.0%	42.9%	0.0%	14.3%
	2002	35	77.1%	65.7%	45.7%	25.7%	14.3%
	2003	23	82.6%	69.6%	43.5%	30.4%	
	2004	35	68.6%	62.9%	48.6%		
	2005	43	69.8%	48.8%			
	2006	38	52.6%	52.6%			
2007	27	63.0%					
Hispanic	1998	39	76.9%	59.0%	38.5%	20.5%	5.1%
	1999	19	78.9%	52.6%	31.6%	21.1%	10.5%
	2000	5	80.0%	60.0%	0.0%	20.0%	0.0%
	2001	19	79.0%	47.4%	15.8%	10.5%	5.2%
	2002	41	68.3%	56.1%	36.6%	14.6%	4.9%
	2003	70	74.3%	57.1%	41.4%	17.1%	
	2004	83	74.7%	55.4%	33.7%		
	2005	92	67.4%	56.5%			
	2006	102	71.6%	59.8%			
2007	99	74.7%					
White	1998	566	76.0%	61.1%	39.2%	9.9%	3.2%
	1999	363	74.1%	59.5%	36.4%	10.5%	6.1%
	2000	442	72.4%	55.4%	33.5%	10.0%	4.3%
	2001	740	71.8%	53.2%	34.9%	12.2%	4.1%
	2002	695	71.2%	58.0%	35.8%	11.7%	4.8%
	2003	802	75.6%	63.3%	38.4%	12.3%	
	2004	782	73.9%	60.7%	36.3%		
	2005	943	70.6%	55.7%			
	2006	839	73.1%	60.3%			
2007	779	69.8%					
Non-Resident Alien	1998	35	68.6%	60.0%	20.0%	5.7%	7.1%
	1999	27	88.9%	66.7%	14.8%	0.0%	0.0%
	2000	31	64.5%	58.1%	29.0%	9.7%	3.2%
	2001	40	75.0%	70.0%	45.0%	12.5%	10.0%
	2002	22	77.3%	63.6%	45.5%	27.3%	13.6%
	2003	18	66.7%	50.0%	22.2%	11.1%	
	2004	26	76.9%	76.9%	38.5%		
	2005	28	89.3%	64.3%			
	2006	22	72.7%	72.7%			
2007	18	83.3%					

To protect the privacy of individuals, rates for cohorts of 3 or less are not reported.

**GRADUATION RATES
TOTAL AND BY GENDER**

Cohort Type	Cohort Year	Headcount	Retention Rate	Cumulative % Graduated		
				in 4 Years	in 5 Years	in 6 Years
Total	1998	746	75.7%	11.3%	35.9%	42.4%
	1999	486	75.1%	14.6%	34.6%	39.9%
	2000	585	71.6%	14.0%	34.4%	40.0%
	2001	825	71.9%	11.3%	29.2%	37.0%
	2002	837	71.8%	14.3%	35.9%	43.5%
	2003	994	76.0%	13.4%	36.9%	
	2004	1022	74.9	14.9%		
Female	1998	468	76.7%	13.9%	41.2%	47.6%
	1999	310	78.1%	16.5%	39.0%	43.9%
	2000	376	74.7%	15.7%	38.6%	44.7%
	2001	522	71.1%	12.6%	32.8%	40.3%
	2002	562	73.7%	16.9%	39.5%	46.8%
	2003	624	75.2%	15.5%	38.5%	
	2004	654	78.0%	16.1%		
Male	1998	278	74.1%	6.8%	27.0%	33.5%
	1999	176	69.9%	11.4%	26.7%	33.0%
	2000	206	66.0%	10.7%	26.7%	31.6%
	2001	303	73.3%	8.9%	23.1%	30.1%
	2002	275	68.0%	9.1%	28.7%	36.7%
	2003	370	77.3%	9.7%	34.3%	
	2004	368	69.3%	12.8%		

GRADUATION RATES BY RACE

Cohort Type	Cohort Year	Headcount	Retention Rate	Cumulative % Graduated		
				in 4 Years	in 5 Years	in 6 Years
Black	1998	44	86.4%	6.8%	27.3%	34.8%
	1999	24	70.8%	8.3%	25.0%	37.5%
	2000	27	66.7%	0.0%	7.4%	11.1%
	2001	12	58.3%	0.0%	0.0%	16.7%
	2002	23	78.3%	4.4%	26.1%	43.5%
	2003	61	80.3%	13.1%	37.7%	
	2004	89	84.3%	12.4%		
American Indian	1998	6	33.3%	0.0%	0.0%	16.7%
Alaskan Native	2000	14	71.4%	21.4%	28.6%	35.7%
	2003	6	66.7%	0.0%	16.7%	
	2004	4	75.0%	25.0%		
Asian Pacific Islander	1998	21	71.4%	14.3%	38.1%	42.9%
	1999	18	66.7%	27.8%	33.3%	44.4%
	2000	4	100.0%	25.0%	50.0%	50.0%
	2001	7	100.0%	28.6%	57.1%	57.1%
	2002	35	77.1%	8.6%	34.3%	40.0%
	2003	23	82.6%	13.0%	26.1%	
	2004	35	68.6%	11.4%		
Hispanic	1998	39	76.9%	2.6%	12.8%	23.1%
	1999	19	78.9%	10.5%	21.1%	26.3%
	2000	5	80.0%	0.0%	0.0%	20.0%
	2001	19	79.0%	10.5%	26.3%	31.6%
	2002	41	68.3%	7.3%	26.8%	36.6%
	2003	70	74.3%	5.7%	24.3%	
	2004	83	74.7%	13.3%		
White	1998	566	76.0%	10.8%	37.6%	43.8%
	1999	363	74.1%	12.7%	34.4%	39.9%
	2000	442	72.4%	14.5%	36.2%	41.6%
	2001	740	71.8%	11.0%	28.9%	36.2%
	2002	695	71.2%	15.3%	37.6%	44.3%
	2003	802	75.6%	14.2%	38.7%	
	2004	782	73.9%	15.1%		
Non-Resident Alien	1998	35	68.6%	40.0%	57.1%	71.4%
	1999	27	88.9%	48.1%	55.6%	55.6%
	2000	31	64.5%	25.8%	41.9%	45.2%
	2001	40	75.0%	20.0%	45.0%	55.0%
	2002	22	77.3%	13.6%	27.3%	40.9%
	2003	18	66.7%	11.1%	38.9%	
	2004	26	76.9%	26.9%		

To protect the privacy of individuals, rates for cohorts of 3 or less are not reported.

**DEGREES CONFERRED 2004 – 2008
BY GENDER AND RACE**

	2004	2005	2006	2007	2008
Female					
Non Resident Alien	26	27	36	38	44
Black	23	26	23	37	59
American Indian	4	3		5	6
Asian Pacific Islander	6	10	16	26	27
Hispanic	23	14	28	40	48
White	688	744	814	914	1073
Unknown	144	99	113	103	78
Female Total	914	923	1030	1163	1335
% Non-White*	7.5%	6.6%	7.6%	10.6%	11.6%
% Female	69.1%	69.8%	71.5%	70.8%	69.6%
Male					
Non Resident Alien	15	22	23	34	22
Black	14	3	16	22	34
American Indian	7	1	2	1	2
Asian Pacific Islander	5	5	3	5	12
Hispanic	8	12	11	14	18
White	311	317	323	370	468
Unknown	48	40	32	33	27
Male Total	408	400	410	479	583
% Non-White*	9.9%	6.2%	9.0%	10.2%	12.4%
% Male	30.9%	30.2%	28.5%	29.2%	30.4%
Total					
Non Resident Alien	41	49	59	72	66
Black	37	29	39	59	93
American Indian	11	4	2	6	8
Asian Pacific Islander	11	15	19	31	39
Hispanic	31	26	39	54	66
White	999	1061	1137	1284	1541
Unknown	192	139	145	136	105
Total	1322	1323	1440	1642	1918
% Non-White*	8.3%	6.5%	8.0%	10.5%	11.8%

* % Non-White excludes Non-resident Alien Students and students with unknown race.

**DEGREES CONFERRED 2004 – 2008
BY GENDER AND DEGREE**

	2004	2005	2006	2007	2008
Female					
Bachelor of Arts	63	86	100	69	104
Bachelor of Science	342	351	401	477	491
Bachelor of Science Business Administration	100	100	88	114	140
Bachelor of Fine Arts	6	4	5	5	6
Bachelor of General/Liberal Studies	8	1	6	4	13
Bachelor of Social Work	18	18	28	22	30
Master of Arts	8	6	7	8	18
Master of Occupational Therapy					3
Master of Science	17	12	29	32	32
Master of Social Work	70	72	67	62	62
Master of Business Administration	11	11	11	14	15
Master of Education	235	227	226	288	337
Master of Arts in Teaching	18	23	24	24	45
MSN/MBA			1		
Master of Arts/Master of Arts in Teaching			1	1	1
Certificate - Advanced Graduate Study	17	12	32	37	32
Other Graduate Certificates			4	4	4
Teacher Certification/Licensure	1			2	2
Female Total	914	923	1030	1163	1335
Male					
Bachelor of Arts	34	42	46	52	47
Bachelor of Science	159	149	160	181	222
Bachelor of Science Business Administration	89	85	74	128	144
Bachelor of Fine Arts	4	5	7	3	3
Bachelor of General/Liberal Studies	5	4	8	3	8
Bachelor of Social Work	2		1	1	5
Master of Arts	2	9	7	13	10
Master of Science	7	10	12	10	17
Master of Social Work	8	12	7	8	11
Master of Business Administration	16	7	9	15	13
Master of Education	68	64	56	45	74
Master of Arts in Teaching	8	5	11	7	11
Master of Arts/Master of Arts in Teaching				1	
MSN/MBA					
Certificate - Advanced Graduate Study	6	8	10	12	14
Other Graduate Certificates			2		3
Teacher Certification/Licensure					1
Male Total	408	400	410	479	583

Female and Male may not equal total degrees due to unknown gender.

**DEGREES CONFERRED 2004 – 2008
BY LEVEL AND RACE**

	2004	2005	2006	2007	2008
Bachelors					
Non Resident Alien	30	42	45	57	54
Black	34	23	23	50	84
American Indian	9	3	2	5	7
Asian Pacific Islander	10	13	14	26	30
Hispanic	26	20	29	46	54
White	649	687	753	837	943
Unknown	72	57	58	38	41
Bachelors Total	830	845	924	1059	1213
% Non-White*	10.9%	7.9%	8.3%	13.2%	15.7%
% Female	64.7%	66.3%	68.0%	65.3%	64.6%
Masters					
Non Resident Alien	11	7	16	14	11
Black	3	6	13	9	7
American Indian	2	1		1	1
Asian Pacific Islander		2	5	4	9
Hispanic	5	6	9	8	12
White	333	358	357	411	555
Unknown	114	78	68	81	54
Masters Total	468	458	468	528	649
% Non-White*	2.9%	4.0%	7.0%	5.1%	5.0%
% Female	76.7%	76.6%	78.2%	81.3%	79.0%
Certificates					
Non Resident Alien			1	1	1
Black					2
American Indian					
Asian Pacific Islander	1			1	
Hispanic			1		
White	17	16	27	36	43
Unknown	6	4	19	17	10
Certificate Total	24	20	48	55	56
% Non-White*	5.6%	0.0%	3.6%	2.7%	4.4%
% Female	75.0%	60.0%	75.0%	78.2%	67.9%

* % Non-White excludes Non-resident Alien Students and students with unknown race.

**UNDERGRADUATE DEGREES CONFERRED 2004 – 2008
BY MAJOR**

	2004	2005	2006	2007	2008
ART	26	36	41	40	38
BIOLOGY	25	27	25	36	29
BUSINESS ADMINISTRATION	189	185	162	242	284
CARTOGRAPHY	5	5	6	4	2
CHEMISTRY	5	4	10	10	16
COMMUNICATIONS	59	59	59	71	58
COMPUTER SCIENCE	16	21	15	11	8
CRIMINAL JUSTICE	73	61	73	82	91
ECONOMICS	3	4	4	3	4
EDUCATION	93	106	112	129	127
ENGLISH	22	41	37	26	35
FIRE SCIENCE	8	8	11	9	8
GENERAL/LIBERAL STUDIES	13	5	14	7	21
GEOGRAPHY	29	27	14	19	17
GEOLOGICAL SCIENCE	15	5	4	7	6
HISTORY	20	23	27	27	36
MATHEMATICS	5	11	9	18	9
MUSIC			2	3	6
NURSING	61	63	81	125	162
OCCUPATIONAL THERAPY	7	9	8	5	16
OFFICE MANAGEMENT	3		1		
POLITICAL SCIENCE	11	14	15	11	13
PSYCHOLOGY	50	55	65	61	78
SOCIAL WORK	20	18	29	23	35
SOCIOLOGY	21	13	23	24	27
SPANISH	8	4	6	3	3
SPORT, FITNESS & LEISURE STUDIES	21	27	46	44	58
THEATER	22	14	25	19	26
Total	830	845	924	1059	1213

To provide an unduplicated headcount, double majors are counted under only one major. Therefore, the counts for individual majors are not complete. This is particularly important since students pursuing teaching with an education major are also required to complete a major in an Arts and Science discipline.

**GRADUATE DEGREES CONFERRED 2004 – 2008
BY PROGRAM**

BUSINESS ADMINISTRATION	27	18	20	29	28
COUNSELING	17	12	24	15	11
CRIMINAL JUSTICE					5
EDUCATION	329	319	309	364	468
ENGLISH	8	10	18	9	11
GEO-INFORMATION	3	4	4	5	2
HISTORY	2	5	5	14	17
MATHEMATICS	2	3		5	12
NURSING	2	3	13	17	19
NURSING/MBA			1		
OCCUPATIONAL THERAPY					3
SOCIAL WORK	78	84	74	70	73
Total	468	458	468	528	649

CAGS - EDUCATION	23	20	42	47	46
CAGS - COUNSELING			1	2	
CERTIFIED FINANCIAL PLANNER			4	2	1
CERTIFICATE NURSE EDUCATION			1	2	1
CERTIFICATE GEO-INFORMATION SCIENCE					5
TEACHER CERTIFICATION/LICENSURE	1			2	3
Total	24	20	48	55	56

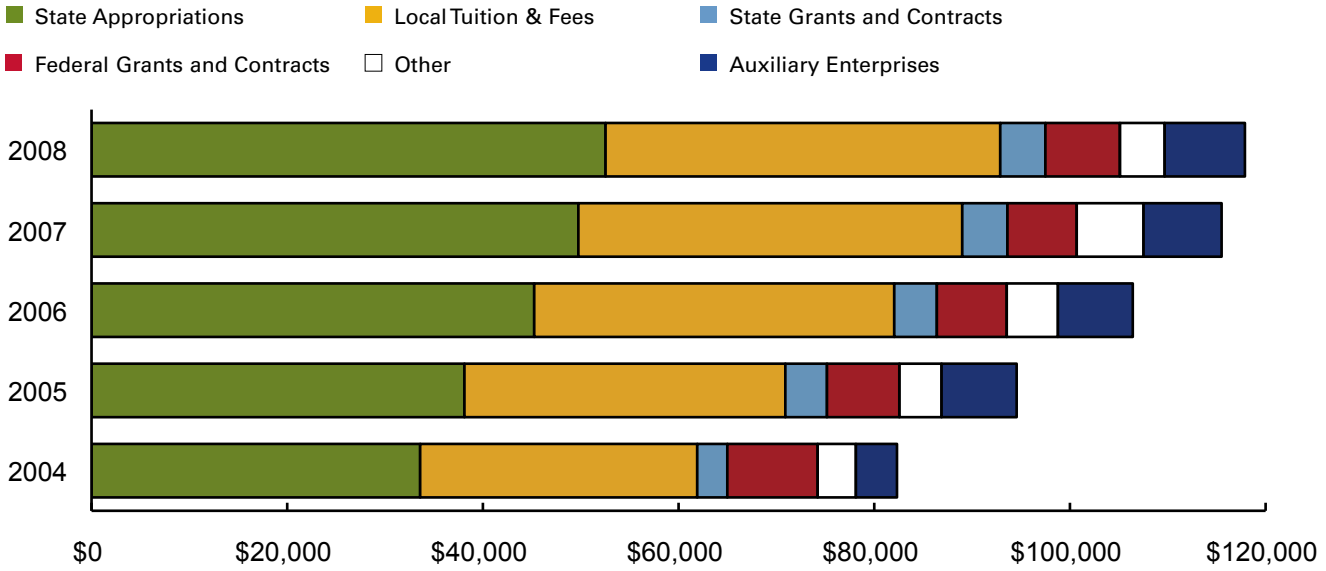
resources

**College Resources
At a Glance
2004 – 2008**

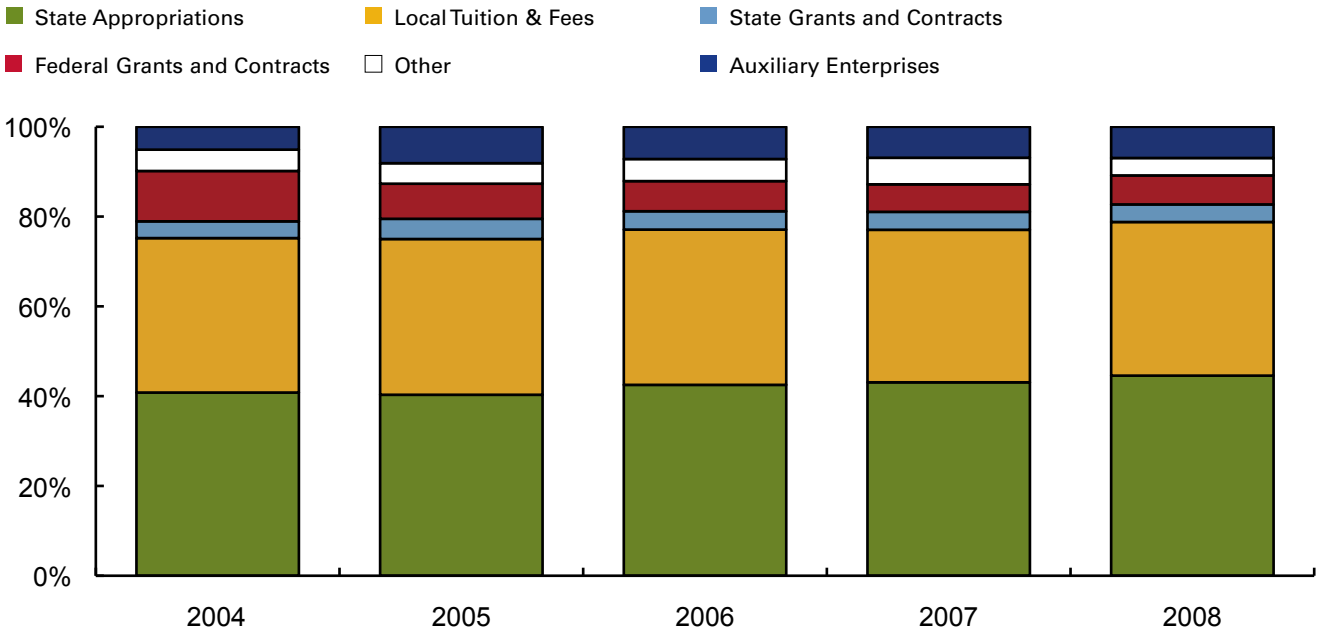


COLLEGE RESOURCES: REVENUES

Revenues FY2004 – FY2008 (in Thousands)

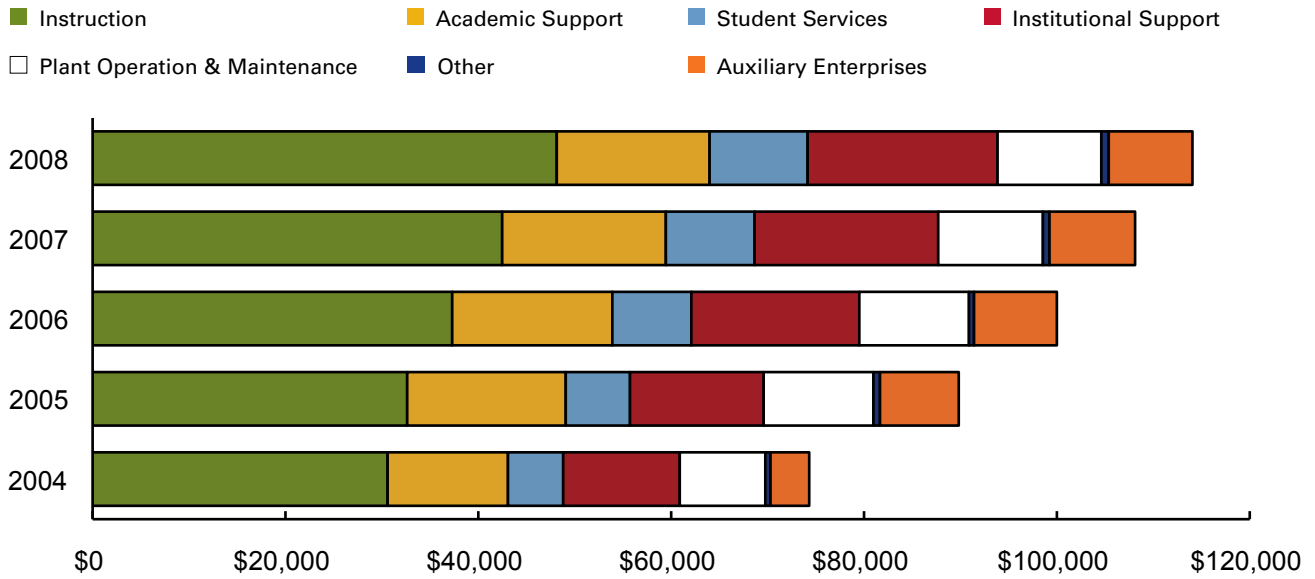


Revenues FY2004 – FY2008 (Revenue Category as % of Total Revenues)

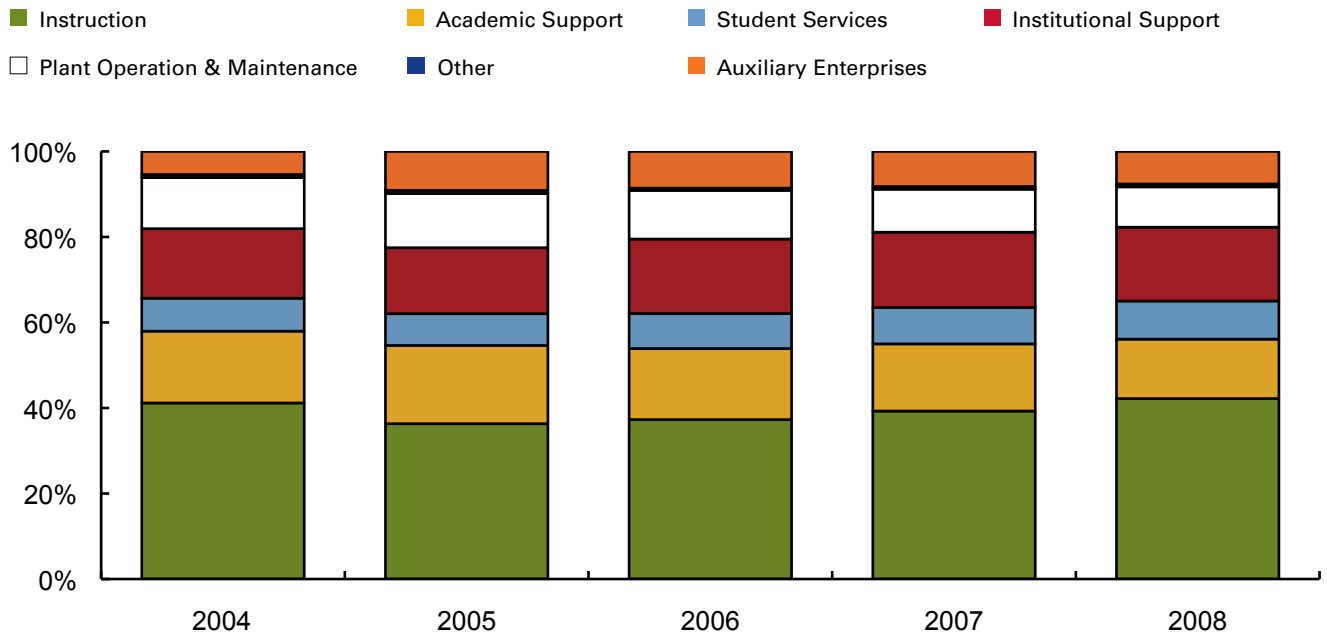


COLLEGE RESOURCES: OPERATING EXPENSES

Operating Expenses FY2004 – FY2008 (in Thousands)

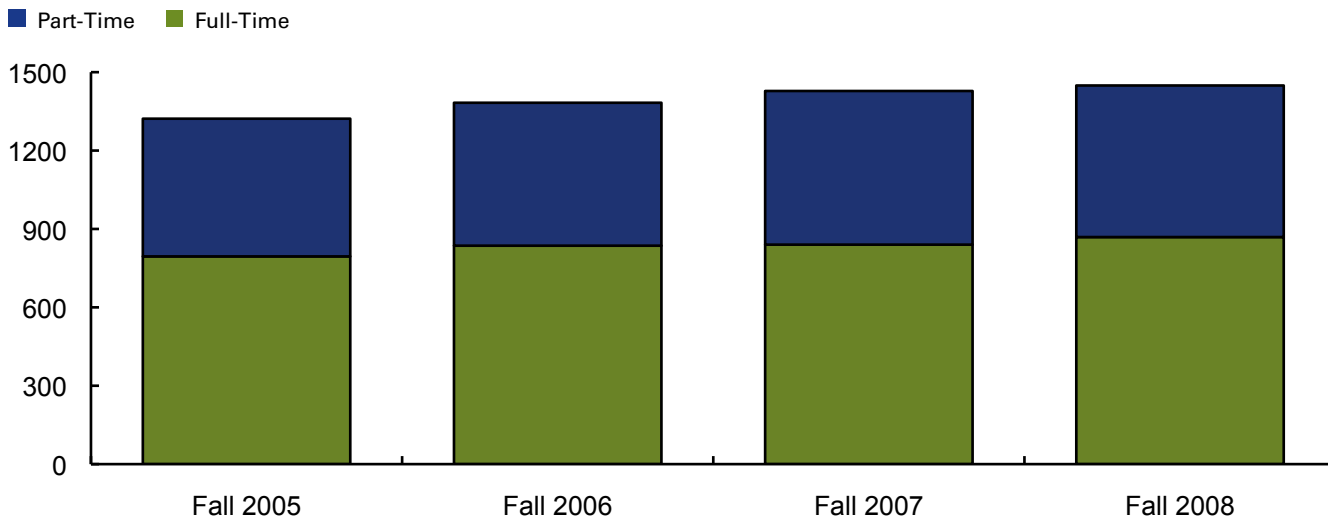


Operating Expenses FY2004 – FY2008 (Expense Categories as % of Total Expenditures)



COLLEGE RESOURCES: EMPLOYEES

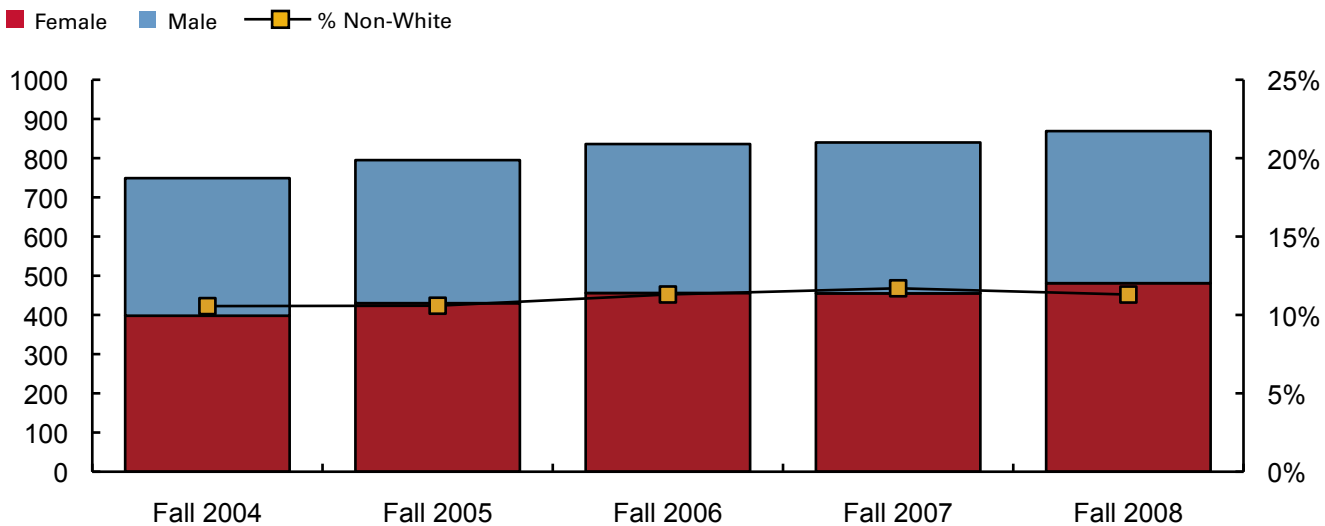
Employee Headcount: Full-time/Part-time



Proportion Full-time/Part-time: All Employees

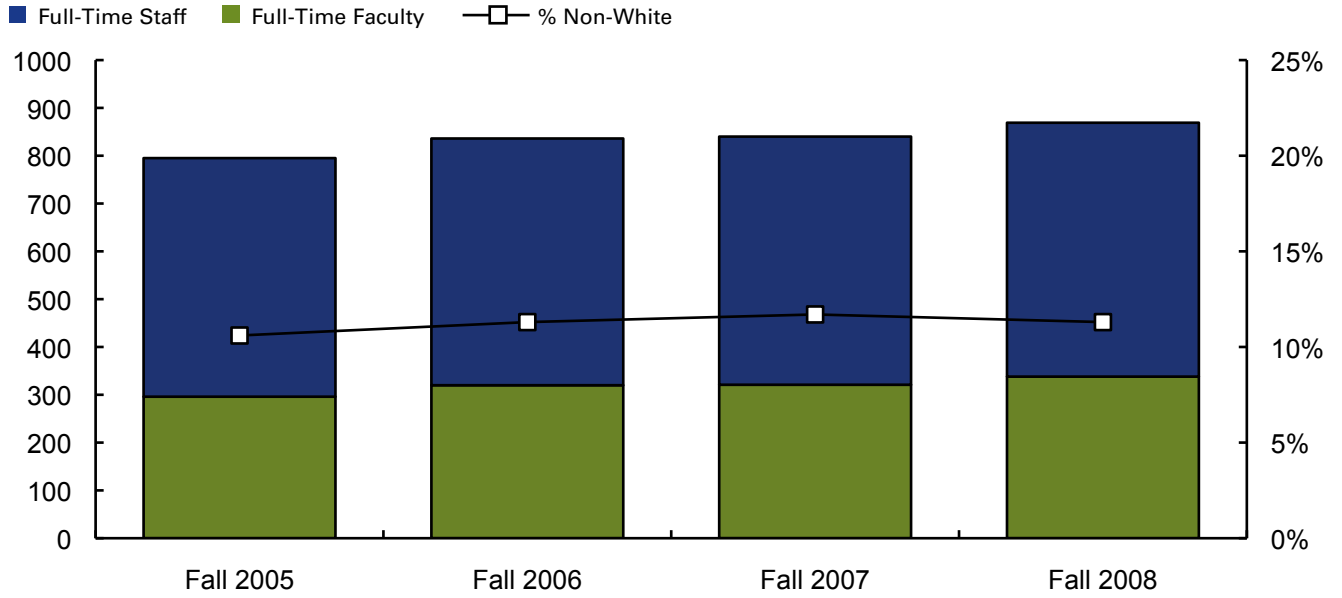


All Full Time Employees by Gender

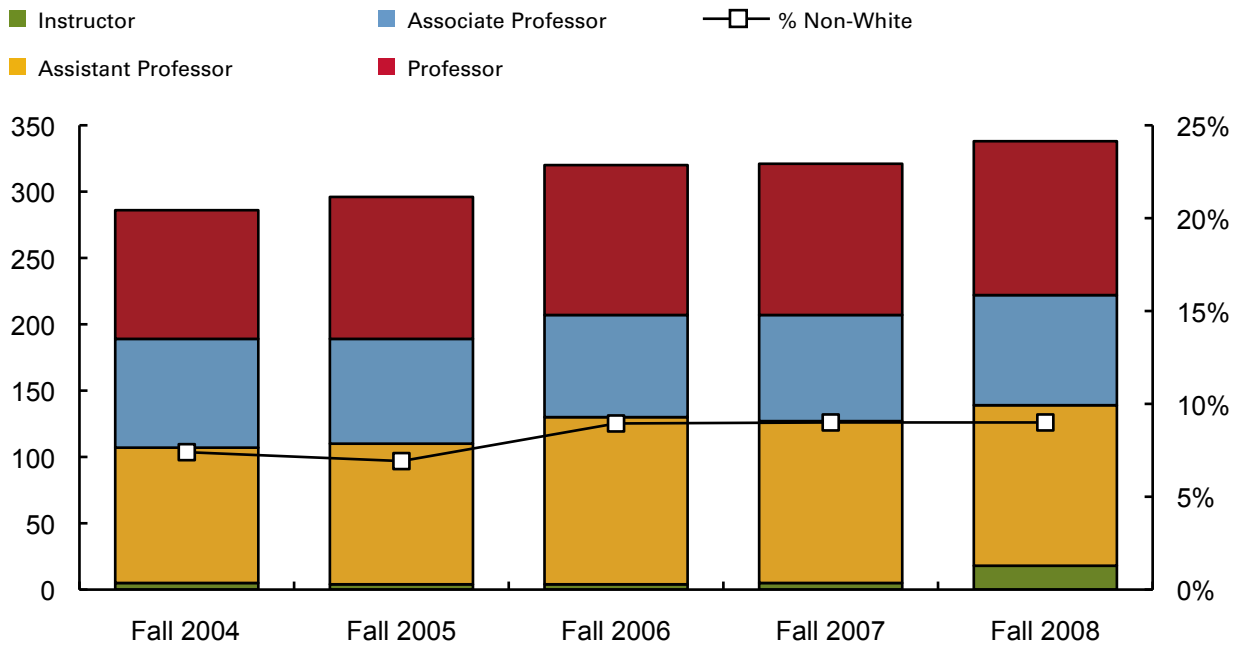


COLLEGE RESOURCES: EMPLOYEES

All Full-Time Employees: Faculty or Staff



Full-Time Faculty by Rank



LEFT BLANK INTENTIONALLY

resources

**College Resources
2004 – 2008
Tables**



REVENUES 2004 – 2008 (IN THOUSANDS)

	2004	2005	2006	2007	2008
LOCAL TUITION & FEES	\$28,319	\$32,799	\$36,798	\$39,235	\$40,341
STATE APPROPRIATIONS	\$33,589	\$38,113	\$45,246	\$49,759	\$52,537
FEDERAL GRANTS and CONTRACTS	\$9,233	\$7,394	\$7,140	\$7,078	\$7,613
STATE GRANTS and CONTRACTS	\$3,074	\$4,256	\$4,354	\$4,619	\$4,614
PRIVATE GRANTS & GIFTS	\$700	\$926	\$1,110	\$1,362	\$1,152
INDEPENDENT OPERATIONS	\$-	\$-	\$-	\$-	\$-
OTHER	\$3,208	\$3,392	\$4,125	\$5,470	\$3,425
AUXILIARY ENTERPRISES	\$4,200	\$7,674	\$7,649	\$7,978	\$8,202
TOTAL	\$82,323	\$94,554	\$106,422	\$115,501	\$117,884

OPERATING EXPENSES 2004 – 2008 (IN THOUSANDS)

	2004	2005	2006	2007	2008
INSTRUCTION	\$30,593	\$32,625	\$37,292	\$42,475	\$48,136
PUBLIC SERVICE	\$395	\$403	\$339	\$385	\$396
ACADEMIC SUPPORT	\$12,483	\$16,441	\$16,605	\$16,973	\$15,849
STUDENT SERVICES	\$5,726	\$6,665	\$8,193	\$9,203	\$10,168
INSTITUTIONAL SUPPORT	\$12,088	\$13,861	\$17,420	\$19,042	\$19,694
PLANT OPERATION & MAINTENANCE	\$8,872	\$11,387	\$11,373	\$10,858	\$10,759
SCHOLARSHIPS & FELLOWSHIPS	\$143	\$273	\$186	\$298	\$376
AUXILIARY ENTERPRISES	\$4,014	\$8,167	\$8,590	\$8,875	\$8,679
TOTAL	\$74,314	\$89,822	\$99,998	\$108,109	\$114,057

Revenues exclude capital and additions to endowment
 Operating expenses exclude depreciation

FULL TIME EMPLOYEES BY RACE AND GENDER

	2004	2005	2006	2007	2008
Female					
Non Resident Alien	3	3	3	3	4
Black	12	9	8	12	14
American Indian	0	1	1	3	3
Asian Pacific Islander	7	9	10	9	8
Hispanic	8	11	15	15	16
White	359	387	407	399	419
Unknown	9	10	12	14	17
Female Total	398	430	456	455	481
% Non-White*	7.0%	7.2%	7.7%	8.9%	8.9%
% Female	53.1%	54.1%	54.5%	54.2%	55.4%
Male					
Non Resident Alien	1	1	1	1	2
Black	20	22	23	20	18
American Indian	0	0	0	0	0
Asian Pacific Islander	11	12	13	14	15
Hispanic	17	17	21	21	20
White	276	297	307	312	316
Unknown	26	16	15	17	17
Male Total	351	365	380	385	388
% Non-White*	14.8%	14.7%	15.7%	15.0%	14.4%
% Male	46.9%	45.9%	45.5%	45.8%	44.6%
Total					
Non Resident Alien	4	4	4	4	6
Black	32	31	31	32	32
American Indian	0	1	1	3	3
Asian Pacific Islander	18	21	23	23	23
Hispanic	25	28	36	36	36
White	635	684	714	711	735
Unknown	35	26	27	31	34
Total	749	795	836	840	869
% Non-White*	10.6%	10.6%	11.3%	11.7%	11.3%

* % Non-White excludes Non-resident Alien and Unknown.

PART TIME EMPLOYEES BY RACE AND GENDER

	2004	2005	2006	2007	2008
Female					
Non Resident Alien		2	4	4	5
Black		9	8	6	5
American Indian		0	0	0	0
Asian Pacific Islander		5	8	6	2
Hispanic		8	15	17	8
White		267	271	291	286
Unknown		32	29	39	40
Female Total	N/A	323	335	363	346
% Non-White*		7.6%	10.3%	9.1%	5.0%
% Female		61.3%	61.2%	61.7%	59.7%
Male					
Non Resident Alien		1	0	2	1
Black		1	2	4	4
American Indian		0	0	1	1
Asian Pacific Islander		1	2	1	1
Hispanic		1	2	1	2
White		170	181	189	199
Unknown		30	25	27	26
Male Total	N/A	204	212	225	234
% Non-White*		1.7%	3.2%	3.6%	3.9%
% Male		38.7%	38.8%	38.3%	40.3%
Total					
Non Resident Alien		3	4	6	6
Black		10	10	10	9
American Indian		0	0	1	1
Asian Pacific Islander		6	10	7	3
Hispanic		9	17	18	10
White		437	452	480	485
Unknown		62	54	66	66
Total	N/A	527	547	588	580
% Non-White*		5.4%	7.6%	7.0%	4.5%

* % Non-White excludes Non-resident Alien and Unknown.
Race and Gender information for part-time employees was not reported in 2004.

FULL TIME FACULTY BY RACE AND GENDER

	2004	2005	2006	2007	2008
Female					
Non Resident Alien	0	0	0	0	0
Black	3	1	1	2	4
American Indian	0	0	0	1	1
Asian Pacific Islander	4	4	6	6	5
Hispanic	2	3	3	2	2
White	126	135	146	144	154
Unknown	5	4	4	5	7
Female Total	140	147	160	160	173
% Non-White*	6.7%	5.6%	6.4%	7.1%	7.2%
% Female	49.0%	49.7%	50.0%	49.8%	51.2%
Male					
Non Resident Alien	0	0	0	0	1
Black	3	5	5	4	3
American Indian	0	0	0	0	0
Asian Pacific Islander	7	7	10	11	11
Hispanic	1	0	3	2	3
White	125	134	139	139	142
Unknown	10	3	3	5	5
Male Total	146	149	160	161	165
% Non-White*	8.1%	8.2%	11.5%	10.9%	10.7%
% Male	51.0%	50.3%	50.0%	50.2%	48.8%
Total					
Non Resident Alien	0	0	0	0	1
Black	6	6	6	6	7
American Indian	0	0	0	1	1
Asian Pacific Islander	11	11	16	17	16
Hispanic	3	3	6	4	5
White	251	269	285	283	296
Unknown	15	7	7	10	12
Total	286	296	320	321	338
% Non-White*	7.4%	6.9%	8.9%	9.0%	8.9%

* % Non-White excludes Non-resident Alien and Unknown.

**FULL TIME FACULTY
BY ACADEMIC RANK**

	2004	2005	2006	2007	2008
Professor	97	107	113	114	116
Associate Professor	82	79	77	80	83
Assistant Professor	102	106	126	122	121
Instructor	5	4	4	5	18

**PART TIME FACULTY
BY RACE AND GENDER**

	2004	2005	2006	2007	2008
Female					
Non Resident Alien		1	1	1	2
Black		3	4	4	3
American Indian		0	0	0	0
Asian Pacific Islander		5	4	2	2
Hispanic		4	5	5	6
White		177	188	197	196
Unknown		24	26	31	33
Female Total	N/A	214	228	240	242
% Non-White*		6.3%	6.5%	5.3%	5.3%
% Female		57.5%	57.4%	57.7%	55.9%
Male					
Non Resident Alien		1	0	1	1
Black		1	2	3	3
American Indian		0	0	1	1
Asian Pacific Islander		1	2	1	1
Hispanic		1	1	1	2
White		130	143	146	160
Unknown		24	21	23	23
Male Total	N/A	158	169	176	191
% Non-White*		2.3%	3.4%	3.9%	4.2%
% Male		42.5%	42.6%	42.3%	44.1%
Total					
Non Resident Alien		2	1	2	3
Black		4	6	7	6
American Indian		0	0	1	1
Asian Pacific Islander		6	6	3	3
Hispanic		5	6	6	8
White		307	331	343	356
Unknown		48	47	54	56
Total	N/A	372	397	416	433
% Non-White*		4.7%	5.2%	4.7%	4.8%

* % Non-White excludes Non-resident Alien and Unknown.
Race and Gender information for part-time employees was not reported in 2004.

ENDNOTES AND SOURCES

Admissions Data: HEIRS Submissions Fall 2004 – Fall 2008

Enrollment Data: HEIRS Submissions for Fall 2004 – Fall 2008

Enrollment by Program Data: Final Fall End of Term Census Data Fall 2004 - Fall 2006;
Census Date Data Fall 2007 – Fall 2008

Retention and Completion Data: Submissions to the Center for Student Retention Data Exchange (CSRDE)

Degrees Conferred Data: HEIRS Submissions for FY2004 – 2008

Resources Data: IPEDS Human Resources and Finance Surveys

