



INTRODUCTION

Welcome to the 2010 Salem State University Fact Book. The Fact Book is derived from and aligns with data reported to external organizations like the National Center for Education Statistics and the Massachusetts Department of Higher Education.

The Fact Book contains data from comparable points in time, over time. The data can help inform decision makers by delineating trends as well as providing context and perspective. However, in reality institutions have a tremendous variety of data and analysis needs, and far more data exists in our systems than can be summarized in a single document. Thus the Fact Book should be viewed as a supplement to the wealth of institutional data and as an annual document providing general information about the university.

Questions concerning information in the Fact Book or requests for additional information can be sent to iep@salemstate.edu.

Dr. W. Neal Fogg, Director

Office of Institutional Effectiveness and Planning

July 2011

TABLE OF CONTENTS

SSU at a Glance	2
Mission and Strategic Plan	3
President’s Leadership	4
I. Admissions	5
New student summary	
Freshman admissions	
Transfer admissions	
Graduate admissions	
II. Tuition and Financial Aid	19
III. Enrollment	21
All college, summary	
Undergraduate degree-seeking	
Graduate degree-seeking	
Non-degree-seeking, undergraduate and graduate	
Undergraduate major	
Graduate program	
IV. Retention and Completion	29
Retention summary	
Retention by gender	
Retention by race/ethnic origin	
Degrees conferred, summary	
Degrees conferred by gender and race/ethnic origin	
Degrees conferred by gender and degree	
Degrees conferred by level and race/ethnic origin	
Undergraduate degrees by major	
Graduate degrees by program	
V. Faculty and Staff	39
Summary	
Full-time faculty by race/ethnic origin and gender	
Full-time non-faculty by race/ethnic origin and gender	
Part-time faculty by race/ethnic origin and gender	
Part-time non-faculty by race/ethnic origin and gender	
VI. Finance	45
Revenues and operating expenses (\$ millions)	
Sources of revenue and types of expenditures (%)	
Glossary	48

SALEM STATE UNIVERSITY AT A GLANCE

FALL 2010

Undergraduate Admissions (Freshman)

Applicants	5,697
Accepted	3,268
Enrolled	998
Men	429
Women	569

Enrollment (Full- and Part-Time)

Undergraduate	7,839
Graduate	2,154
Total Enrollment	9,993

Degrees and Certificates Awarded (Academic Year 2009 - 2010)

Bachelor's	1,246
Post-Bachelor's certificates	27
Master's	556
Post-Master's certificates/CAGS	55
Total Degrees Awarded	1,802
Total Certificates Awarded	82

Faculty

Full-Time Faculty	333
Part-Time Faculty	446
Total Faculty	779

Professional, Administrative and Support Staff

Full-Time	834
Part-Time	595
Total	1,429

Cost of Attendance (2010-2011)

In-State Undergraduate	
Tuition	\$910
Fees	\$7,230
Room and Board (Mean Double Occupancy)	\$7,495
Out-of-State Undergraduate	
Tuition	\$7,050
Fees	\$7,230
Room and Board (Mean Double Occupancy)	\$7,495

Finance (Fiscal July 1, 2010 - June 30, 2011)

Total Operating Revenues and Other Support	\$115.5 Million
Total Expenditures	\$118.1 Million

MISSION STATEMENT

Salem State's mission is to provide a high quality, student-centered education that prepares a diverse community of learners to contribute responsibly and creatively to a global society, and serve as a resource to advance the region's cultural, social and economic development.

VISION

To be a premier teaching university dedicated to excellence in education, service and scholarship.

STRATEGIC PLAN: 2009-2014

- Goal 1: Academic Programs** — Advance the intellectual and personal growth of all students through a wide spectrum of learning opportunities and high-quality academic programs.
- Goal 2: Student Success and Support** — Ensure student success by providing the highest-quality support services and co-curricular opportunities.
- Goal 3: Sufficient Resources and Facilities** — Identify, develop, maintain, and manage resources and facilities sufficient to fulfill Salem State's mission.
- Goal 4: Community involvement and civic engagement** — Be a principal partner in the cultural, economic and social development of the North Shore.
- Goal 5: Positioning of the University and External Communication** — Develop a comprehensive communications plan that brands Salem State University.

BOARD OF TRUSTEES

Jacob S. Segal, Chairperson

Regina M. Villa, Vice Chairperson

David C. Abdoo '97

James S. Ansara '10H

Roger S. Berkowitz '07H

Wayne Gates '76

Lawrence McCully '80

Angel Donahue-Rodriguez, Student Trustee

Pamela C. Scott

PRESIDENT'S LEADERSHIP

2010-2011

President

Executive Assistant to the President/Secretary to the Board of Trustees
Special Assistant to the President for External Affairs

Dr. Patricia Maguire Meservey
Ms. Jean E. Fleischman
Ms. Beth Ann Bower

Executive Vice President of Student Life

Associate Vice President and Dean of Students
Chief Information Officer

Dr. Stanley Cahill
Dr. James G. Stoll
Ms. Patricia Ainsworth

Provost and Vice President Academic Affairs

Dean of Bertolon School of Business
Dean of School of Continuing and Professional Studies
Dean of Library, Instructional and Learning Support
Dean of College of Arts and Sciences
Dean of School of Graduate Studies
Dean of College of Health and Human Services

Dr. Kristin Esterberg
Dr. K. Brewer Doran
Dr. Arlene T. Greenstein
Dr. Susan E. Cirillo
Dr. Jude Nixon
Dr. Carol Glod
Dr. Neal DeChillo

Vice President of Finance and Facilities

Associate Vice President of Finance

Mr. Andrew Soll
Mr. Joseph F.X. Donovan

Vice President of Institutional Advancement

Associate Vice President of Development
Assistant Vice President of Alumni Affairs and Annual Giving

Ms. Cynthia McGurren
Vacant
Ms. Eileen O'Brien

Associate Vice President of Enrollment Management

Dr. Scott James

Associate Vice President of Marketing and Communications

Ms. Karen Murray Cady

admissions

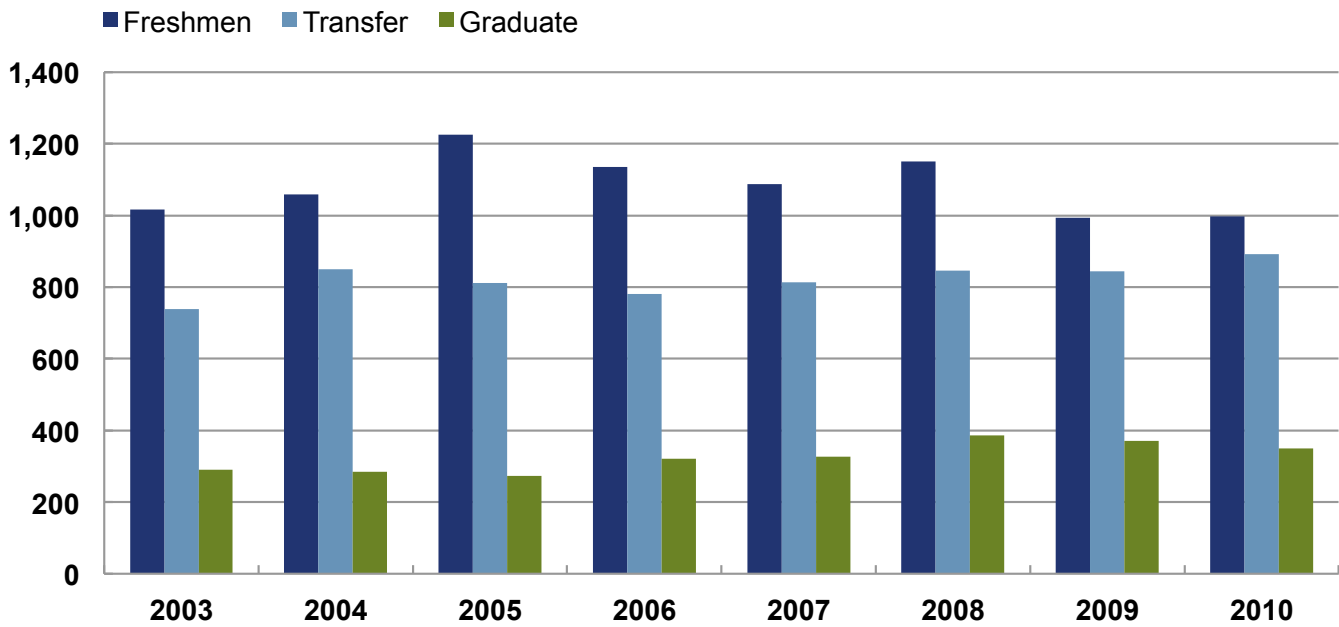
**Admissions
2003 – 2010**



NEW STUDENTS ENTERING IN FALL TERM

2003 - 2010

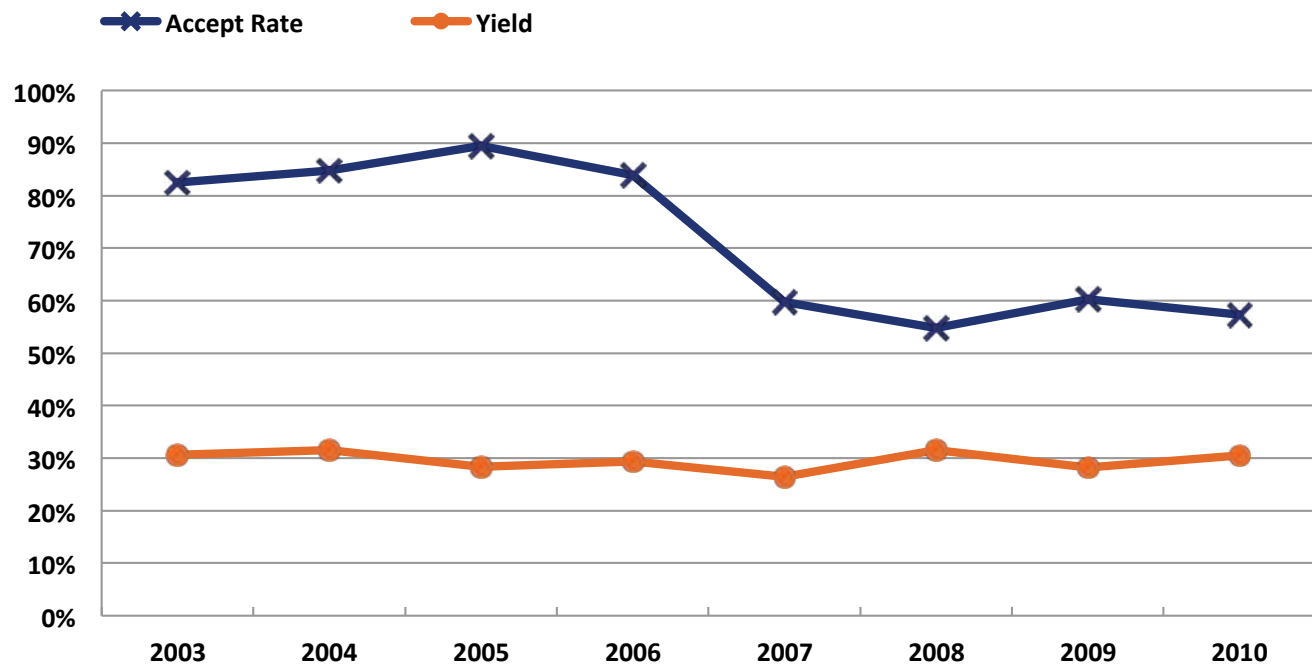
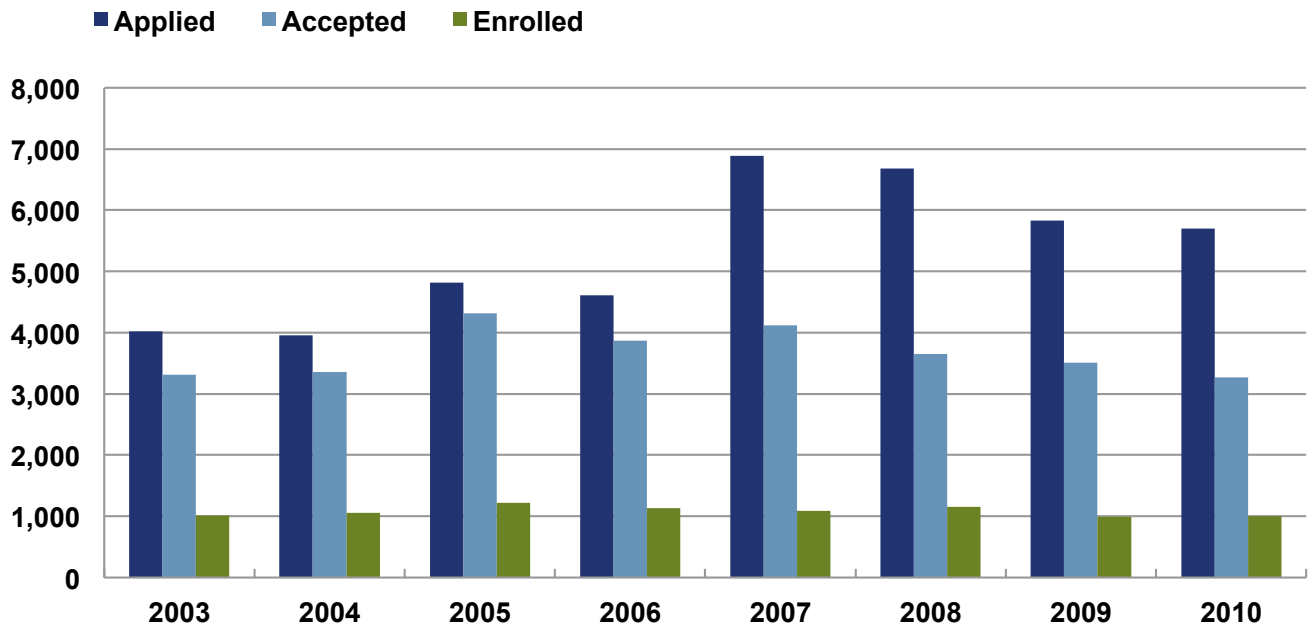
	2003	2004	2005	2006	2007	2008	2009	2010
Freshmen	1016	1058	1226	1136	1088	1151	994	998
Transfer	739	849	811	780	814	846	852	892
Graduate	290	285	273	321	326	386	371	349



FRESHMAN ADMISSIONS

2003 - 2010

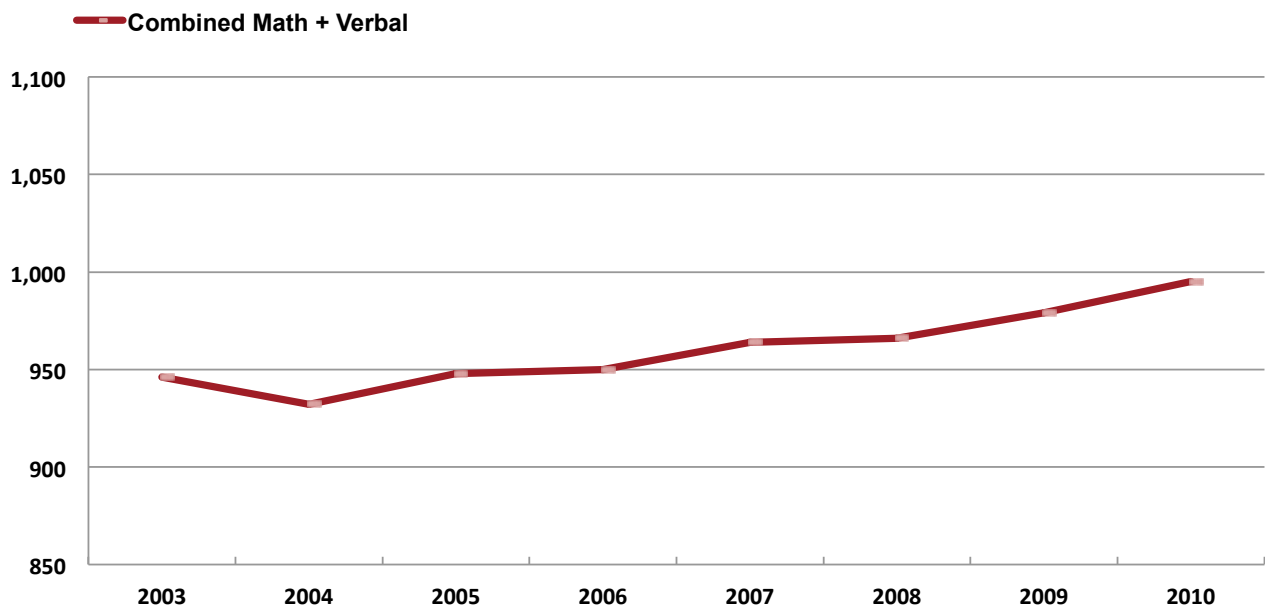
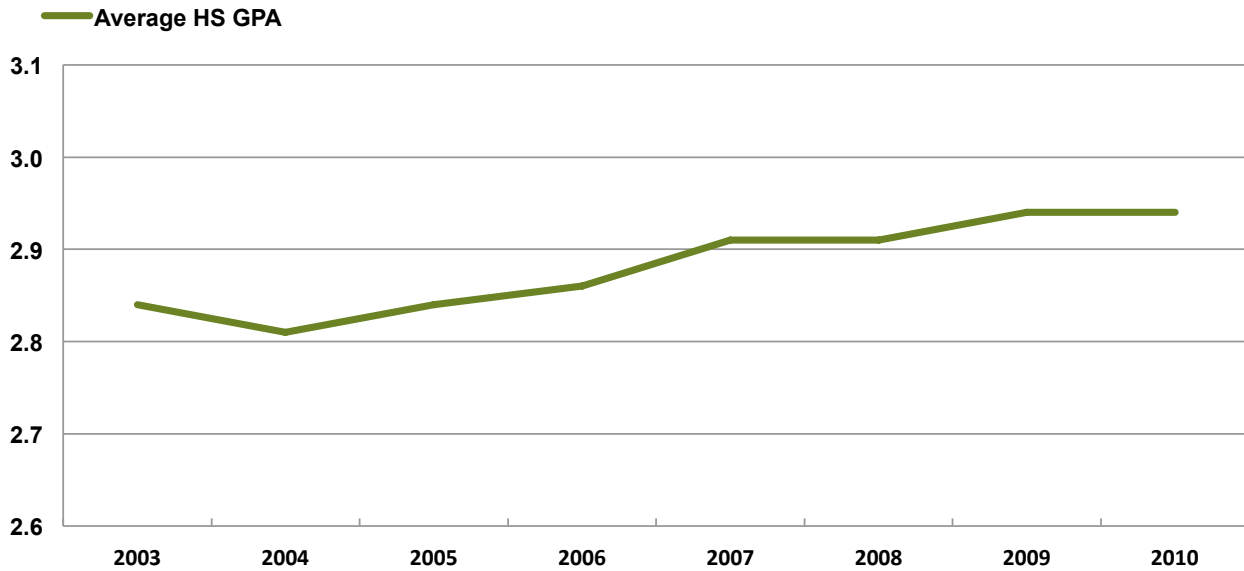
	2003	2004	2005	2006	2007	2008	2009	2010
Applied	4,018	3,952	4,818	4,608	6,890	6,676	5,835	5,697
Accepted	3,313	3,352	4,314	3,865	4,118	3,656	3,514	3,268
Enrolled	1,016	1,058	1,226	1,136	1,088	1,151	994	998
Accept Rate	82%	85%	90%	84%	60%	55%	60%	57%
Yield	31%	32%	28%	29%	26%	31%	28%	31%



FRESHMAN ENROLLED

ACADEMIC PROFILE: 2003 - 2010

	2003	2004	2005	2006	2007	2008	2009	2010
Enrolled	1,016	1,058	1,226	1,136	1,088	1,151	994	998
Average HS GPA	2.84	2.81	2.84	2.86	2.91	2.91	2.94	2.94
Average SAT								
Math	471	465	471	475	484	483	491	497
Verbal	475	466	476	474	481	483	488	497
Combined Math + Verbal	946	932	948	950	964	966	979	995



FRESHMAN ENROLLED

GENDER AND RACE/ETHNICITY: 2003 - 2010

	2003	2004	2005	2006	2007	2008	2009	2010
Total	1,016	1,058	1,226	1,136	1,088	1,151	994	998
Female	636	681	808	717	654	722	611	569
Male	380	377	418	419	434	429	383	429
% Female	62.6%	64.4%	65.9%	63.1%	60.1%	62.7%	61.5%	57.0%
Non-Resident Alien	18	26	28	22	19	12	6	7
Hispanic/Latino	71	86	94	102	104	110	82	98
American Indian	6	4	2	1	3	2	3	3
Black or African American	65	93	85	105	110	112	88	53
White	819	811	957	845	793	829	771	786
Asian Pacific Islander	23	35	43	39	27	51	35	
Asian								23
Hawaiian/Pacific Islander								0
Two or more races								24
Unknown	14	3	17	22	32	35	9	4
% Non-White*	16.8%	21.2%	19.0%	22.6%	23.5%	24.9%	21.2%	20.4%
Beginning fall 2010, race/ethnic data is not comparable to prior years.								
% Non-White excludes Non-Resident Alien students and students with unknown race.								

FRESHMAN ENROLLED

MAJOR: 2003 - 2010

	2003	2004	2005	2006	2007	2008	2009	2010
Undeclared	216	267	280	229	235	215	175	212
Business Administration	143	170	181	167	170	171	126	121
Criminal Justice	89	78	98	79	67	90	79	77
Education	115	99	120	116	93	87	100	68
Biology	52	56	76	60	68	64	71	67
Psychology	35	54	67	55	56	69	45	60
Nursing	112	85	92	98	110	91	58	56
English	24	22	27	21	17	35	33	45
Communications	46	34	50	45	38	44	44	39
History	17	17	19	26	11	31	25	29
Art	28	14	16	18	32	17	26	28
Sport and Movement Science	36	32	43	59	40	65	33	28
Theatre	37	34	50	34	35	42	42	28
Computer Science	12	23	13	24	21	21	23	21
Liberal Studies	1	19	15	15	15	9	7	21
Social Work	17	17	19	21	18	24	24	18
Athletic Training						7	26	17
Chemistry	4	7	6	9	9	15	8	13
Music			15	16	16	15	7	10
Sociology	3	4	11	10	10	5	4	9
Spanish	2	1	4	4	2	2	3	9
Economics		2		2	5	1	1	6
Math	12	4	5	14	8	9	14	6
Political Science	9	12	8	8	7	10	11	5
Geography	1	3	6		1	4	4	4
Geological Sciences	3		1	3	3	7	4	1
Cartography	2	4	4	3	1	1	1	0

Top 5 (In 2010) Percent:

	2003	2004	2005	2006	2007	2008	2009	2010
Undeclared	21%	25%	23%	20%	22%	19%	18%	21%
Business Administration	14%	16%	15%	15%	16%	15%	13%	12%
Criminal Justice	9%	7%	8%	7%	6%	8%	8%	8%
Education	11%	9%	11%	10%	9%	8%	10%	7%
Biology	5%	5%	6%	5%	6%	6%	7%	7%

FRESHMAN ENROLLED

TOP FEEDER HIGH SCHOOLS: 2004 - 2010

	2004	2005	2006	2007	2008	2009	2010
Peabody HS	45	50	48	51	43	46	46
Salem HS	36	32	44	36	36	32	42
Beverly HS	14	19	18	16	23	14	29
Danvers HS	22	14	15	15	28	15	28
Gloucester HS	30	17	18	26	25	14	28
Lynn Classical HS	26	32	37	38	44	36	22
Saugus HS	33	29	18	23	18	19	20
Lynn English HS	41	44	27	37	27	20	19
Haverhill HS							17
Everett HS		23	27	30	24	14	17
Saint Mary Reg. HS				14	21	21	15
Wakefield HS							14
Bishop Fenwick HS	26	22	17	22		17	13
Revere HS	22	18	16	23	16	16	13
Medford HS	16	27	17			16	13
Swampscott HS					13		13
Northeast Metro Tech HS					12	11	13
North Andover HS							13
Grt Lawrence Regl V-Tech							10
Attleboro HS							9
Billerica Memorial HS						9	9
Woburn HS						15	8
Lawrence HS		24				19	8
North Shore Technical HS						8	8
Burlington HS						8	8
Saint Johns Prep. School							8
Winthrop HS						8	8
Masconomet Regional HS							7
Leominster HS							7
Shawsheen Valley Voc Tec							7
Melrose HS			15		14	17	7
Milford HS							7

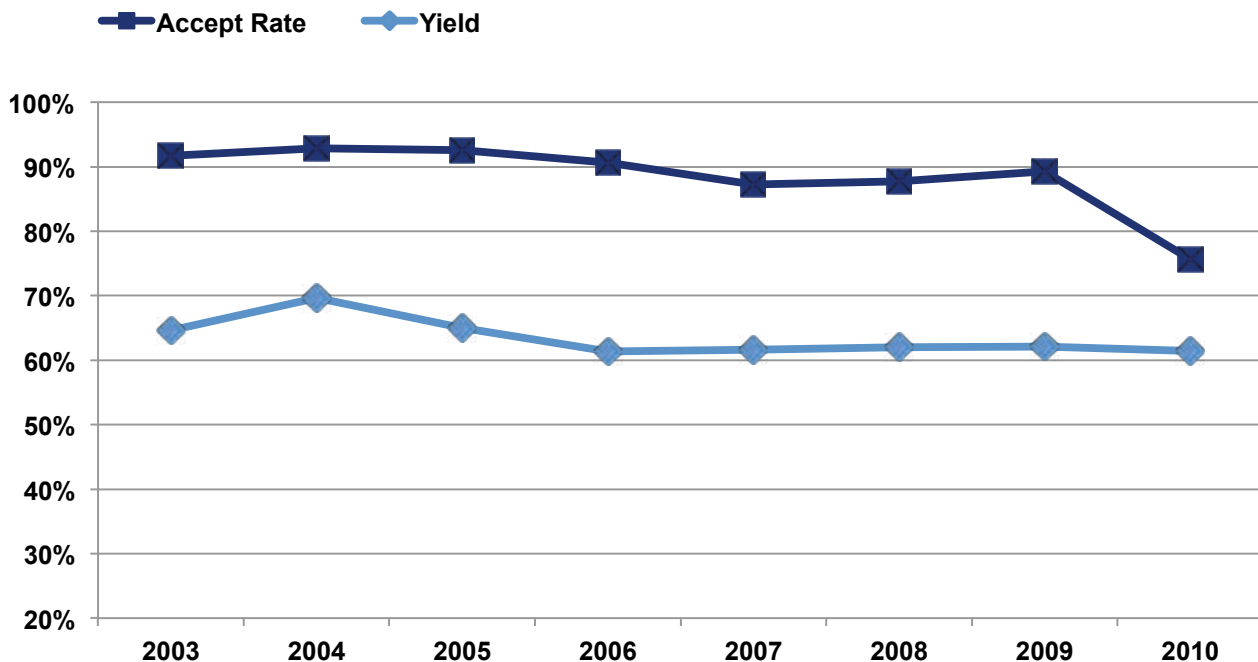
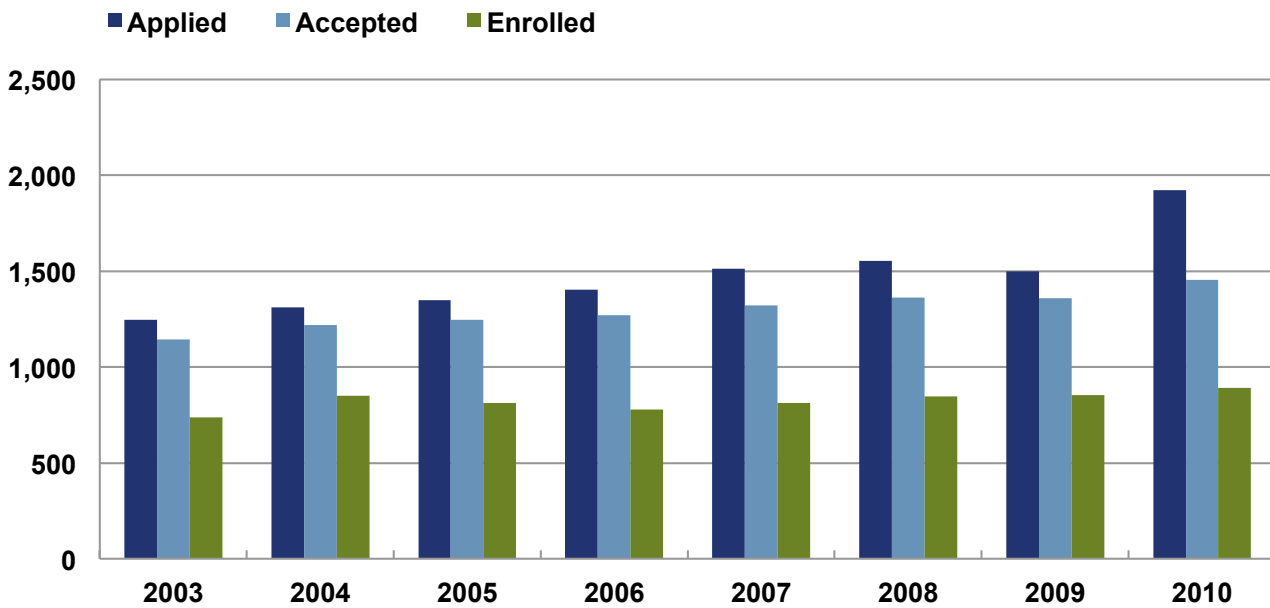
Top 5 (In 2010) Percent:

	2004	2005	2006	2007	2008	2009	2010
Peabody HS	4%	4%	4%	5%	4%	5%	5%
Salem HS	3%	3%	4%	3%	3%	3%	4%
Beverly HS	1%	2%	2%	1%	2%	1%	3%
Danvers HS	2%	1%	1%	1%	2%	2%	3%
Gloucester HS	3%	1%	2%	2%	2%	1%	3%

TRANSFER ADMISSIONS

2003 - 2010

	2003	2004	2005	2006	2007	2008	2009	2010
Applied	1,248	1,312	1,348	1,402	1,514	1,554	1,499	1,921
Accepted	1,144	1,219	1,248	1,271	1,321	1,364	1,358	1,453
Enrolled	739	849	811	780	814	846	852	892
Accept Rate	92%	93%	93%	91%	87%	88%	91%	76%
Yield	65%	70%	65%	61%	62%	62%	63%	61%



TRANSFER ENROLLED

GENDER AND RACE/ETHNICITY: 2003 - 2010

	2003	2004	2005	2006	2007	2008	2009	2010
Total	739	849	811	780	814	846	852	892
Female	478	507	476	482	500	516	495	534
Male	271	342	334	298	314	330	357	358
% Female	63.8%	59.7%	58.8%	61.8%	61.4%	61.0%	58.1%	59.9%
Non-Resident Alien	31	37	30	37	35	34	33	42
Hispanic/Latino	46	39	28	48	55	55	38	63
American Indian	2	4	3	4	3	4	7	2
Black or African American	37	55	59	43	66	71	80	78
White	585	682	640	596	603	632	651	648
Asian Pacific Islander	16	20	23	25	15	30	27	
Asian								23
Hawaiian/Pacific Islander								1
Two or more races								18
Unknown	22	12	28	27	37	20	16	17
% Non-White*	15%	15%	15%	17%	19%	20%	19%	22%
Beginning fall 2010, race/ethnic data is not comparable to prior years.								
% Non-White excludes Non-Resident Alien students and students with unknown race.								

TRANSFER ENROLLED

MAJOR: 2003 - 2010

	2003	2004	2005	2006	2007	2008	2009	2010
Business Administration	137	178	168	156	142	187	178	181
Undeclared	68	77	63	53	74	57	62	83
Psychology	42	48	52	44	41	40	39	75
Criminal Justice	60	85	72	70	74	71	85	65
Education	88	92	78	95	77	87	76	64
Biology	55	30	49	44	47	43	50	55
Nursing	52	58	84	65	70	75	76	53
Social Work	14	19	23	26	31	29	26	37
Sport and Movement Science	29	37	28	29	35	38	30	31
English	16	25	14	22	28	21	20	28
History	15	23	18	26	21	23	22	28
Communications	42	32	43	33	27	34	33	26
Liberal Studies	0	9	6	7	25	23	19	24
Computer Science	22	21	12	10	8	15	10	18
Art	20	17	19	19	22	20	14	16
Sociology	19	13	15	19	13	9	11	15
Geography	3	16	7	4	5	2	9	14
Math	9	9	11	5	6	4	12	10
Theater	12	10	8	11	18	10	15	10
Athletic Training	0	NA	NA	NA	NA	5	10	9
Fire Science	2	8	9	6	6	3	6	9
Political Science	10	11	7	11	7	13	6	9
Economics	3	4	2	5	4	3	7	8
Occupational Therapy	7	8	5	4	11	12	9	8
Chemistry	8	8	5	5	9	11	8	6
Geological Sciences	1	4	4	1	3	5	7	4
Cartography	3	1	0	0	1	0	0	2
Music	0	1	4	4	6	2	5	2
Spanish	2	5	5	6	3	4	7	2
Top 5 (In 2010) Percent:								
	2003	2004	2005	2006	2007	2008	2009	2010
Business Administration	19%	21%	21%	20%	17%	22%	21%	20%
Undeclared	9%	9%	8%	7%	9%	7%	7%	8%
Psychology	6%	6%	6%	6%	5%	5%	5%	8%
Criminal Justice	8%	10%	9%	9%	9%	8%	10%	7%
Education	12%	11%	10%	12%	9%	10%	9%	7%

TRANSFER ENROLLED TOP FEEDER COLLEGES AND UNIVERSITIES: 2003 - 2010

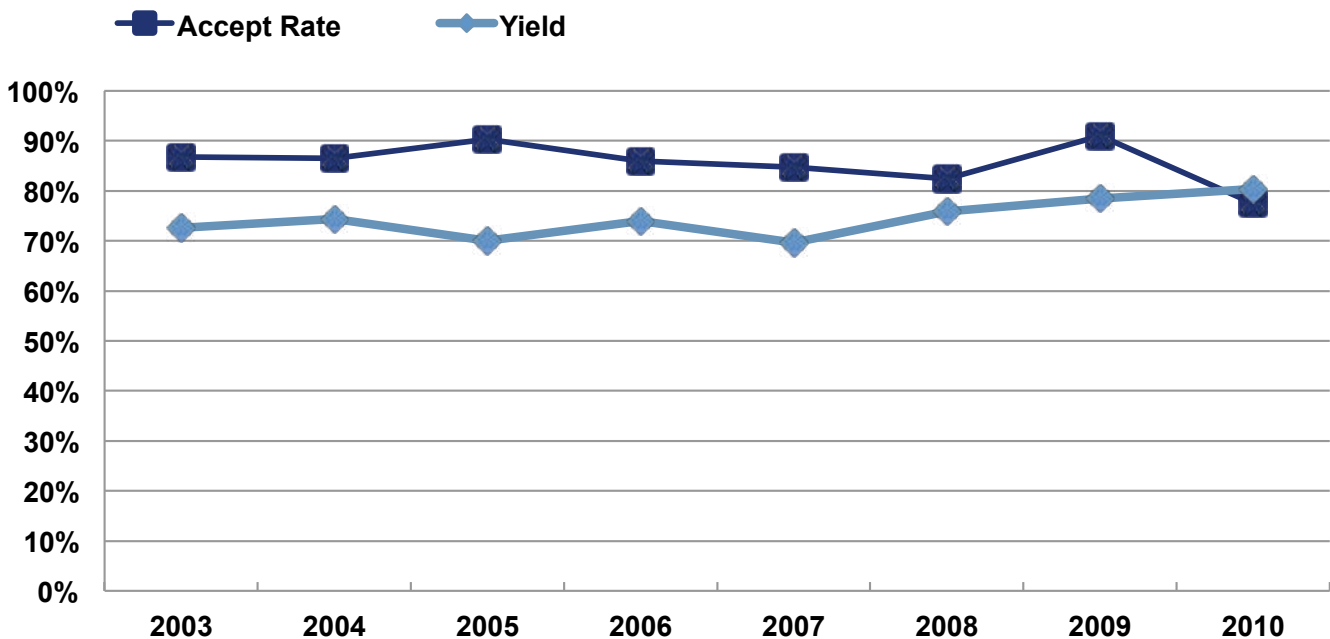
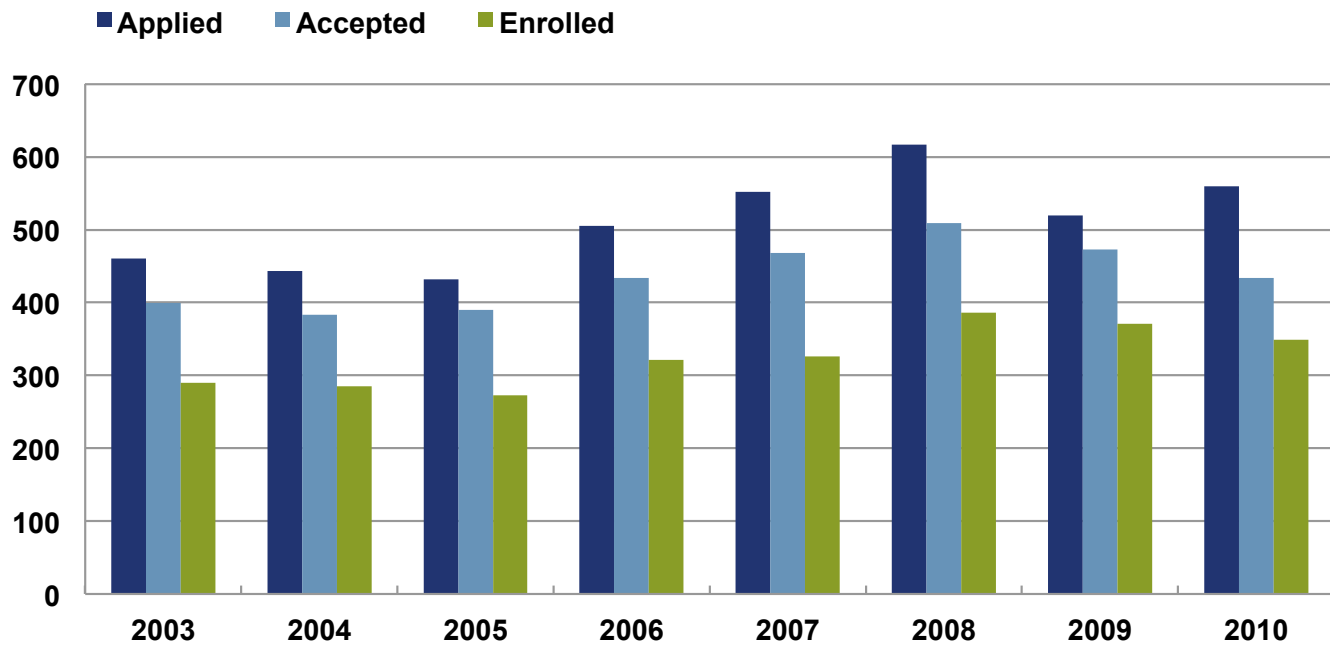
	2003	2004	2005	2006	2007	2008	2009	2010
North Shore Community College	157	154	201	179	189	228	192	240
Middlesex Community College	64	61	34	53	56	60	58	74
Northern Essex Cmty College	35	54	35	45	43	39	38	47
Bunker Hill Community College	35	35	37	30	33	46	41	35
Quincy College	11	11	10	16	15	12	10	20
Marian Court College	0	17	21	16	18	17	31	16
Univ Mass Amherst	19	10	19	16	15	0	14	15
Univ Mass Boston	0	15	13	11	0	14	13	13
Univ Mass Lowell	12	12	10	15	15	13	19	12
Dean College	0	0	0	0	0	0	0	9
Bridgewater State University	0	0	10	0	0	9	8	8
Mass Bay Community College	0	0	11	11	14	12	8	8
Northeastern University	12	12	13	0	0	0	7	8
Univ Mass Dartmouth	0	0	0	13	0	0	22	8
Roxbury Community College	0	0	0	0	0	0	6	7
Quinsigamond Cmty College	0	0	0	0	0	0	0	7
Curry College	0	0	0	0	0	0	6	7
St Josephs College MA	0	0	0	0	0	0	0	7
Bristol Community College	0	0	0	0	0	0	0	7
Regis College MA	0	0	0	0	0	0	0	7
Massasoit Community College	0	0	0	0	0	0	12	7
Framingham State University	0	0	0	0	0	0	0	7
Mass Coll Pharm Alli	0	0	0	0	0	0	0	6
Merrimack College	0	0	0	11	0	0	0	6
Lasell College	0	0	0	0	0	0	0	6
Suffolk University	0	0	0	0	12	12	8	5
Cape Cod Community College	0	0	0	0	0	0	9	5
Holyoke Community College	0	0	0	0	0	0	0	5
Johnson & Wales University	0	0	0	0	0	0	0	5
Berkshire Community College	0	0	0	0	0	0	0	5
Fitchburg State University	0	0	0	0	0	0	0	5
Mount Ida College	0	0	0	0	0	0	0	5
# of Enrolling - Top Ten	345	381	414	416	410	462	502	622
% of Total Enrolled - Top Ten	48%	46%	51%	53%	50%	56%	64%	69%
Total Count of Feeder Colleges	162	164	151	161	170	181	174	183

Top 15 based on number of admitted, enrolled students. Colleges and universities that sent the same numbers of students are counted at the same rank which is why the top 15 may include more than 15 colleges and universities.

GRADUATE ADMISSIONS

2003 - 2010

	2003	2004	2005	2006	2007	2008	2009	2010
Applied	460	443	432	505	552	617	520	560
Accepted	399	383	390	434	468	509	473	434
Enrolled	290	285	273	321	326	386	371	349
Accept Rate	87%	86%	90%	86%	85%	82%	91%	78%
Yield	73%	74%	70%	74%	70%	76%	78%	80%



GRADUATE ENROLLED

GENDER AND RACE/ETHNICITY: 2003 - 2010

	2003	2004	2005	2006	2007	2008	2009	2010
Total	290	285	273	321	326	386	371	349
Female	220	229	208	250	250	311	283	257
Male	69	56	61	71	76	75	88	92
% Female	75.9%	80.4%	76.2%	77.9%	76.7%	80.6%	76.3%	73.6%
Non-Resident Alien	5	7	5	12	9	15	11	8
Hispanic/Latino	6	8	11	6	10	8	5	9
American Indian	1	0	0	1	1	0	0	0
Black or African American	7	11	6	4	0	7	10	11
White	238	245	225	261	271	314	294	292
Asian Pacific Islander	5	5	2	4	3	1	5	
Asian								8
Hawaiian/Pacific Islander								0
Two or more races								6
Unknown	28	9	24	33	32	41	46	15
% Non-White*	7.4%	8.9%	7.8%	5.4%	4.9%	4.8%	6.4%	10.4%
Beginning fall 2010, race/ethnic data is not comparable to prior years.								
% Non-White excludes Non-Resident Alien students and students with unknown race.								

NEW GRADUATE STUDENTS ENROLLED

FALL 2003 - 2010

GRADUATE PROGRAMS	2003	2004	2005	2006	2007	2008	2009	2010
Social Work – MSW	76	84	65	83	77	74	88	105
Special Education – MEd	42	22	20	25	31	33	11	22
Higher Education in Student Affairs – MEd		17	3	15	15	10	12	16
Elementary Education – MEd	27	32	25	15	20	18	26	12
School Counseling – MEd	13	16	12	6	6	9	15	10
Early Childhood Education – MEd	4	5	8	3	4	11	9	6
Library Media Studies – MEd	3	2	6	3	22	10	10	6
Reading v MEd	11	11	13	9	7	24	1	6
Physical Education – MEd	2	2	6	4	4	3	4	2
Secondary Education – MEd	19	19	8	10	3	2	5	1
Technology in Education – MEd	6	1	2	2	3	2	1	1
Educational Leadership – MEd	8	2	3	2	1	2	1	
Field Based – MEd	6			33		1		
Middle School – MEd	19	9	6	6	7	8	8	1
History – MAT					6	8	9	7
English as a Second Language – MAT	7		1	2	5	12	15	6
Art – MAT	2	1	2	2	1	5	7	9
Biology – MAT			1	1				
Spanish – MAT		6	2	3	8	4	3	5
English – MAT	6	2	5	4	2	10	2	3
Mathematics – MAT		2	4	3	2	8	10	3
Chemistry – MAT			1			1		1
English – MA/MAT			2	2	1	2	1	
General Science – MAT				2				
CAGS – Education	3	3	10	4	10	19	12	15
Advanced Professional Studies – Counseling	1	1	1	1	2	4	2	3
Counseling and Psychological Services – MS	5	11	13	17	12	21	18	20
Nursing – MSN	5	2	11	8	5	8	19	12
Occupational Therapy – BS/MS				4	11	5	9	5
MSN/MBA	1		1					
History – MA	3	6	11	4	9	10	8	12
English – MA	8	7	4	5	11	8	10	6
Criminal Justice – MS					6	3	10	6
Industrial/Organizational Psychology – MS						3	3	6
Geo-Information Science – MS	1	1	1	2	1	4	4	2
Business – MBA	10	20	12	11	11	20	11	8
Mathematics – MS	1	1		2	3	3	6	
Certificate, Licensure, No Award Tracks			14	28	20	21	21	32

tuition and financial aid

**Tuition and Financial Aid
2006 – 2010**



TUITION AND FINANCIAL AID

FULL TIME FRESHMEN

Cost of Attendance	2006-07	2007-08	2008-09	2009-10	2010-11
In-State					
Tuition	\$910	\$910	\$910	\$910	\$910
Fees	\$5,120	\$5,274	\$5,432	\$5,940	\$6,238
Books	\$800	\$900	\$900	\$900	\$900
Room	\$5,370	\$5,538	\$6,048	\$7,217	\$7,440
Board	\$2,590	\$2,590	\$2,668	\$2,814	\$2,955
Personal and Misc. (incl. laptop)	\$2,100	\$2,100	\$2,010	\$2,012	\$1,938
Travel	\$650	\$650	\$650	\$650	\$650
TOTAL	\$17,540	\$17,962	\$18,618	\$20,443	\$21,031
Out-of-State					
Tuition	\$7,050	\$7,050	\$7,050	\$7,050	\$7,050
Fees	\$5,120	\$5,274	\$5,432	\$5,940	\$6,238
Books	\$800	\$900	\$900	\$900	\$900
Room	\$5,370	\$5,538	\$6,048	\$7,217	\$7,440
Board	\$2,590	\$2,590	\$2,668	\$2,814	\$2,955
Personal & Misc. (incl laptop)	\$2,100	\$2,100	\$2,010	\$2,012	\$1,938
Travel	\$650	\$650	\$650	\$650	\$650
TOTAL	\$23,680	\$24,102	\$24,758	\$26,583	\$27,171
Financial Aid					
	2006-07	2007-08	2008-09	2009-10	2010-11
Percent receiving					
Federal Grant/Scholarship	30%	32%	33%	37%	37%
State Grant/Scholarship	51%	53%	53%	53%	52%
Institutional Grant/Scholarship	19%	19%	33%	44%	40%
Other Grant/Scholarship	17%	17%	11%	13%	13%
Any Grant/Scholarship	58%	60%	59%	66%	63%
Mean Amount (among recipients)					
Federal Grant/Scholarship	\$3,545	\$3,822	\$4,013	\$5,002	\$4,830
State Grant/Scholarship	\$2,298	\$2,243	\$2,233	\$2,272	\$1,864
Institutional Grant/Scholarship	\$1,177	\$1,291	\$828	\$1,320	\$1,485
Other Grant/Scholarship	\$1,490	\$1,546	\$1,403	\$1,625	\$1,420
All Grant/Scholarship	\$4,638	\$4,856	\$4,988	\$5,800	\$5,621
Percent receiving Federal Student Loan					
	55%	60%	66%	66%	67%
Mean amount (among borrowers)					
	\$4,214	\$4,675	\$5,702	\$6,497	\$6,595

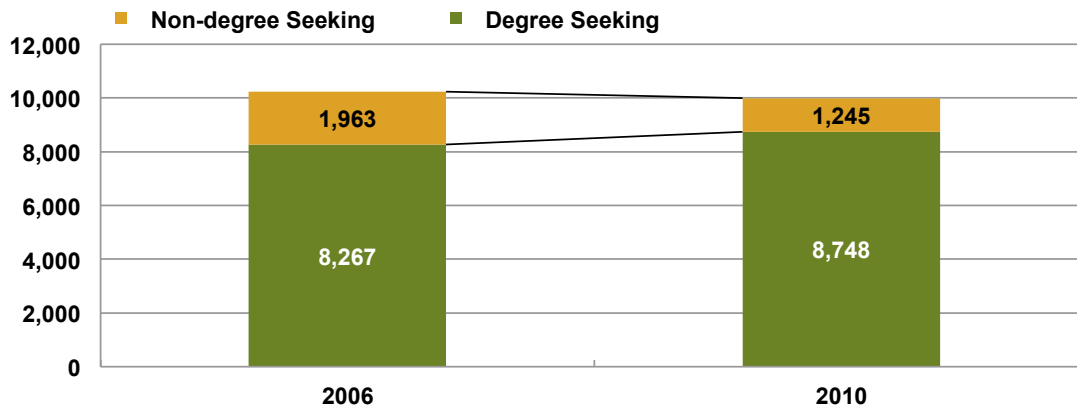
enrollment

**Enrollment
2006 – 2010**

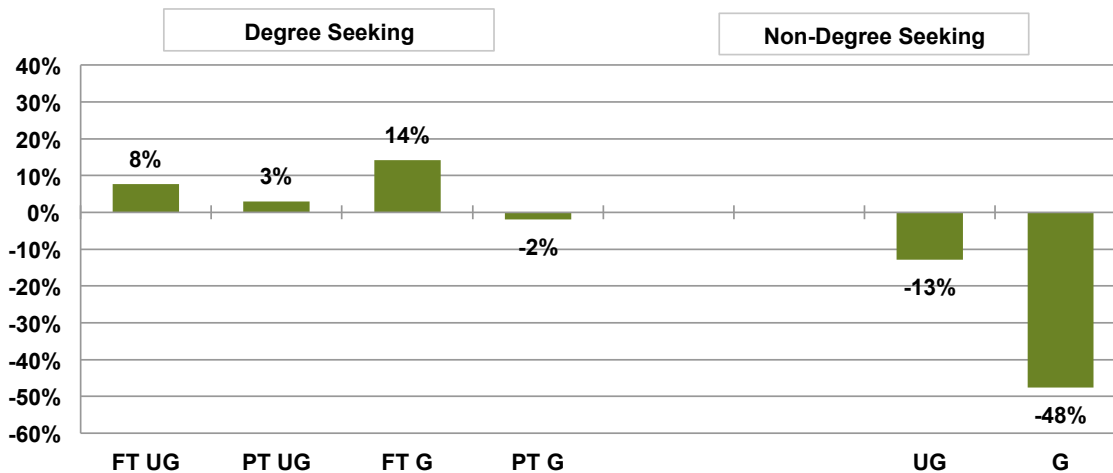


COUNT	2006	2007	2008	2009	2010
Total	10,230	10,085	10,157	10,125	9,993
Full-time	6,013	5,965	6,106	6,237	6,355
Part-time	4,217	4,120	4,051	3,888	3,638
Degree Seeking	8,267	8,450	8,539	8,452	8,748
Non-degree Seeking	1,963	1,635	1,618	1,673	1,245
Degree Seeking					
Full-time Undergraduate	5,512	5,626	5,707	5,806	5,936
Part-time Undergraduate	1,320	1,388	1,375	1,279	1,360
Full-time Graduate	274	213	283	303	313
Part-time Graduate	1,161	1,223	1,174	1,064	1,139
Non-Degree Seeking					
Undergraduate	623	593	595	678	543
Graduate	1,340	1,042	1,023	995	702

Degree Seeking Status



Change in Enrollments, 2006 - 2010, by Degree Seeking Status and Level



UNDERGRADUATE HEADCOUNT

FALL 2006 - 2010 DEGREE SEEKING

	2006	2007	2008	2009	2010
Full-time total	5,512	5,626	5,707	5,806	5,936
Female	3,452	3,480	3,529	3,548	3,579
Male	2,060	2,146	2,178	2,258	2,357
% Female	63%	62%	62%	61%	60%
Non-Resident Alien					
	238	220	200	175	184
Hispanic/Latino					
	357	382	427	431	506
American Indian					
	14	12	14	18	18
Black or African American					
	391	407	442	487	450
White					
	4,205	4,294	4,289	4,377	4,431
Asian Pacific Islander					
	157	146	168	187	
Asian					
					174
Hawaiian/Pacific Islander					
					6
Two or more races					
					72
Unknown					
	150	165	167	131	95
% Non-White	18%	18%	20%	20%	22%
Part-time total					
	1320	1388	1375	1279	1360
Female	919	928	952	853	899
Male	401	460	423	426	461
% Female	70%	67%	69%	67%	66%
Non-Resident Alien					
	40	56	53	38	38
Hispanic/Latino					
	67	84	84	83	115
American Indian					
	11	13	7	9	6
Black or African American					
	89	135	149	146	174
White					
	991	994	985	936	932
Asian Pacific Islander					
	42	37	48	31	
Asian					
					39
Hawaiian/Pacific Islander					
					0
Two or more races					
					14
Unknown					
	80	69	49	36	42
% Non-White	17%	21%	23%	22%	27%

GRADUATE HEADCOUNT

ALL 2006 - 2010 DEGREE SEEKING

	2006	2007	2008	2009	2010
Full-time total	274	213	283	303	313
Female	225	166	216	239	245
Male	49	47	67	64	68
% Female	82%	78%	76%	79%	78%
Non-Resident Alien					
	26	16	22	19	25
Hispanic/Latino					
	4	6	5	6	10
American Indian					
	1	1	1	0	0
Black or African American					
	14	5	6	6	14
White					
	192	173	224	241	234
Asian Pacific Islander					
	4	2	2	5	
Asian					
					10
Hawaiian/Pacific Islander					
					0
Two or more races					
					3
Unknown					
	33	10	23	26	17
% Non-White	11%	7%	6%	7%	14%
Part-time total					
	1161	1223	1174	1064	1139
Female	908	942	922	831	845
Male	253	281	252	233	294
% Female	78%	77%	79%	78%	74%
Non-Resident Alien					
	12	15	18	14	12
Hispanic/Latino					
	29	28	23	20	23
American Indian					
	2	1	0	1	1
Black or African American					
	12	17	16	17	19
White					
	943	1046	1012	911	972
Asian Pacific Islander					
	12	12	6	4	
Asian					
					13
Hawaiian/Pacific Islander					
					0
Two or more races					
					7
Unknown					
	151	104	99	97	92
% Non-White	6%	5%	4%	4%	6%

UNDERGRADUATE AND GRADUATE HEADCOUNT

**FALL 2006 - 2010
NON-DEGREE SEEKING**

	2006	2007	2008	2009	2010
Undergraduate total	623	593	595	678	543
Female	360	334	345	393	324
Male	263	259	250	285	219
% Female	58%	56%	58%	58%	60%
Non-Resident Alien					
	58	43	56	63	57
Hispanic/Latino					
	12	15	14	20	22
American Indian					
	2	1	1	0	1
Black or African American					
	17	22	19	24	17
White					
	387	428	438	401	335
Asian Pacific Islander					
	3	4	7	13	
Asian					
					11
Hawaiian/Pacific Islander					
					0
Two or more races					
					2
Unknown					
	144	80	60	157	98
% Non-White	8%	9%	9%	12%	14%
Graduate total					
	1340	1042	1023	995	702
Female	1083	813	812	761	506
Male	257	229	211	234	196
% Female	81%	78%	79%	76%	72%
Non-Resident Alien					
	15	16	21	30	24
Hispanic/Latino					
	19	11	4	9	9
American Indian					
	4	2	1	1	1
Black or African American					
	15	10	10	9	6
White					
	667	651	756	509	445
Asian Pacific Islander					
	3	7	3	11	
Asian					
					2
Hawaiian/Pacific Islander					
					0
Two or more races					
					0
Unknown					
	617	345	228	426	215
% Non-White	6%	4%	2%	6%	4%

UNDERGRADUATE HEADCOUNT

FALL 2006 - 2010 BY MAJOR

	2006	2007	2008	2009	2010
College of Arts and Sciences					
Undeclared	576	594	492	445	509
Psychology	453	468	458	447	465
Biology	325	353	368	388	424
Communications	320	322	348	311	309
Sport and Movement Science	299	317	276	280	269
English	213	242	271	282	258
History	255	235	253	276	245
Art + Design	180	192	188	187	193
Theatre	172	173	159	171	152
Computer Science	94	89	94	107	125
Liberal Studies	85	112	124	80	104
Sociology	179	185	170	124	97
Athletic Training	NA	NA	56	93	79
Political Science	73	74	84	80	75
Chemistry	57	57	62	66	71
Geological Sciences	34	49	69	73	71
Geography	82	78	88	87	68
Math	69	56	63	72	67
Music	66	77	75	65	58
Economics	21	33	32	43	46
Spanish	46	45	49	49	45
Cartography	20	18	12	8	7
College of Health and Human Services					
Nursing	808	881	898	866	813
Education	752	749	676	676	594
Criminal Justice	509	529	540	554	556
Social Work	174	170	203	197	202
Occupational Therapy	22	28	38	29	34
Bertolon School of Business					
Business	1282	1301	1338	1358	1336
Fire Science	37	37	28	27	24

GRADUATE HEADCOUNT
FALL 2006 - 2010 BY PROGRAM

	2006	2007	2008	2009	2010
Social Work – MSW	229	217	211	222	262
Special Education – MEd	138	145	161	159	115
Elementary Education – MEd	137	115	101	102	90
School Counseling – MEd	53	46	34	54	57
Higher Education in Student Affairs – MEd	26	32	34	42	43
Early Childhood Education – MEd	28	38	41	52	42
Reading – MEd	104	64	74	58	39
Library Media Studies – MEd	19	32	33	37	32
Middle School – MEd	25	34	28	26	31
Physical Education – MEd	24	24	30	25	18
Secondary Education – MEd	42	40	22	3	11
Technology in Education – MEd	11	13	11	13	11
Educational Leadership – MEd	15	8	15	11	5
Bilingual Education – MEd	0	1	0	0	0
Field Based – MEd	9	14	30	0	0
History – MAT	8	18	23	27	30
English as a Second Language – MAT	20	18	25	38	28
Spanish – MAT	20	27	29	27	27
Art – MAT	18	14	7	16	24
English – MAT	19	25	29	25	18
Middle School Math – MAT	10	10	8	10	13
English – MA/MAT	17	21	14	9	12
Mathematics – MAT	10	12	13	12	7
Biology – MAT	8	7	4	3	5
General Science – MAT	2	3	1	3	4
Chemistry – MAT	1	1	4	4	2
CAGS – Education	84	73	91	63	44
Advanced Professional Studies – Counseling	4	6	5	7	6
Counseling and Psychological Services – MS	58	57	67	68	78
Nursing – MSN	67	67	82	88	90
Nursing – RN/MSN	1	2	4	1	2
Occupational Therapy – MS	5	16	17	18	13
MSN/MBA	1	2	1	3	0
English – MA	25	38	38	38	43
History – MA	36	47	36	39	43
Criminal Justice – MS	6	14	11	17	17
Industrial/Organizational Psychology – MS			4	10	16
Geo-Information Science – MS	6	8	10	11	13
Business – MBA	78	59	59	64	61
Mathematics – MS	16	12	11	6	9
School Business Officer	2	1	0	0	1
Certificates/Licensure Programs	53	52	53	65	90

LEFT BLANK INTENTIONALLY

retention and completion

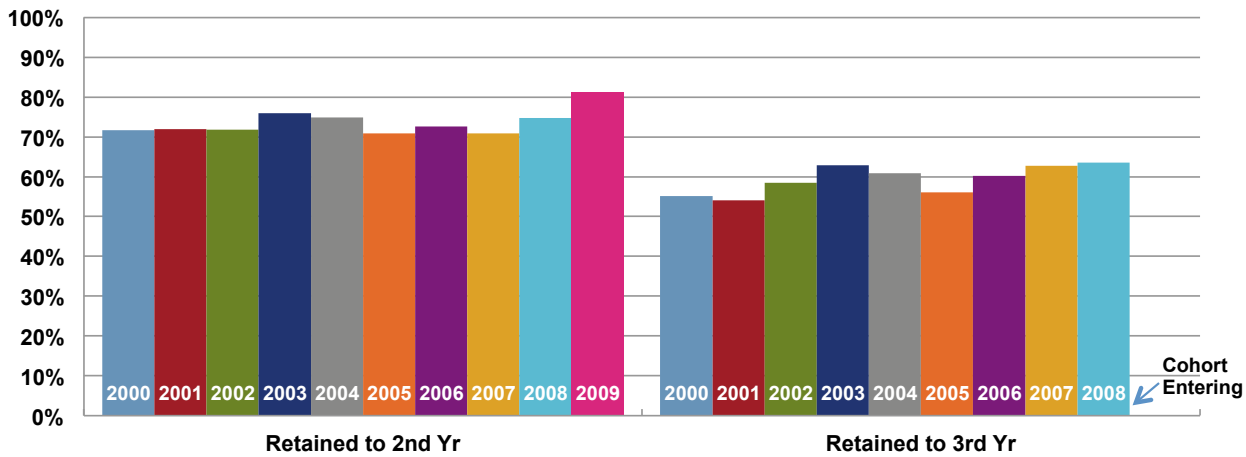
**Retention and Completion
2006 – 2010**



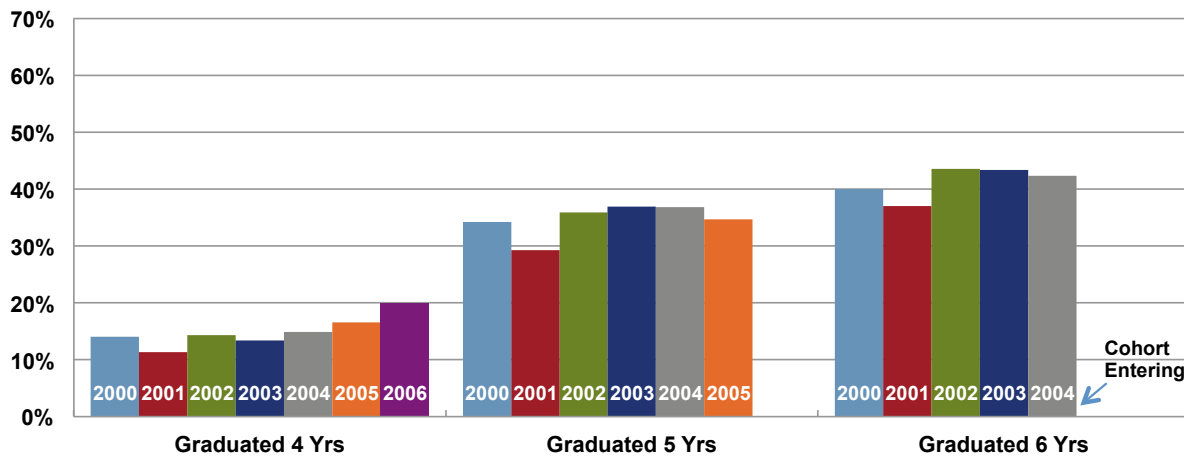
FRESHMAN RETENTION AND GRADUATION

Cohort Year	Cohort Size	Continued		Graduated			Still Enrolled
		to 2nd Year	to 3rd Year	in 4 Years	in 5 Years	in 6 Years	7th Year
2000	585	71.6%	55.2%	14.0%	34.2%	40.0%	4.8%
2001	825	71.9%	54.1%	11.3%	29.3%	37.0%	4.5%
2002	837	71.8%	58.5%	14.3%	35.9%	43.5%	4.8%
2003	994	76.0%	62.9%	13.4%	36.9%	43.4%	5.2%
2004	1022	74.9%	60.9%	14.9%	36.8%	42.3%	
2005	1208	70.9%	56.1%	16.6%	34.7%		
2006	1129	72.6%	60.2%	19.9%			
2007	1064	70.9%	62.7%				
2008	1134	74.8%	63.5%				
2009	974	81.3%					

One- and Two-Year Retention, Cohorts Entering 2000-2009



Graduation Rates, Cohorts Entering 2000-2006



RETENTION AND GRADUATION

TOTAL AND BY GENDER

			Retention		Graduation		
			% Continued		% Graduated		
Cohort Type	Cohort Year	Cohort Size	to 2nd Year	to 3rd Year	4 Years	5 Years	6 Years
Total Cohort	2000	585	71.6%	55.2%	14.0%	34.2%	40.0%
	2001	825	71.9%	54.1%	11.3%	29.3%	37.0%
	2002	837	71.8%	58.5%	14.3%	35.9%	43.5%
	2003	994	76.0%	62.9%	13.4%	36.9%	43.4%
	2004	1022	74.9%	60.9%	14.9%	36.8%	42.3%
	2005	1208	70.9%	56.1%	16.6%	34.7%	
	2006	1129	72.6%	60.2%	19.9%		
	2007	1064	70.9%	62.7%			
	2008	1134	74.8%	63.5%			
	2009	974	81.3%				
Female	2000	376	74.7%	57.7%	15.7%	38.3%	44.4%
	2001	522	71.1%	55.2%	12.6%	32.8%	40.3%
	2002	562	73.7%	61.4%	16.9%	39.5%	47.0%
	2003	624	75.2%	62.0%	15.5%	38.5%	44.9%
	2004	654	78.0%	64.5%	16.2%	38.8%	44.7%
	2005	803	71.7%	57.7%	18.9%	37.1%	
	2006	712	73.6%	61.8%	21.7%		
	2007	644	72.4%	65.2%			
	2008	708	76.6%	65.0%			
	2009	600	82.5%				
Male	2000	206	66.0%	51.0%	10.7%	26.7%	31.6%
	2001	303	73.3%	52.2%	8.9%	23.2%	30.1%
	2002	275	68.0%	52.7%	9.1%	28.7%	36.7%
	2003	370	77.3%	64.3%	9.7%	34.3%	40.8%
	2004	368	69.3%	54.4%	12.8%	33.2%	38.0%
	2005	405	69.1%	53.1%	11.9%	29.9%	
	2006	417	71.0%	57.6%	16.8%		
	2007	420	68.6%	58.8%			
	2008	426	71.8%	61.0%			
	2009	374	79.4%				

RETENTION AND GRADUATION

BY RACE/ETHNICITY

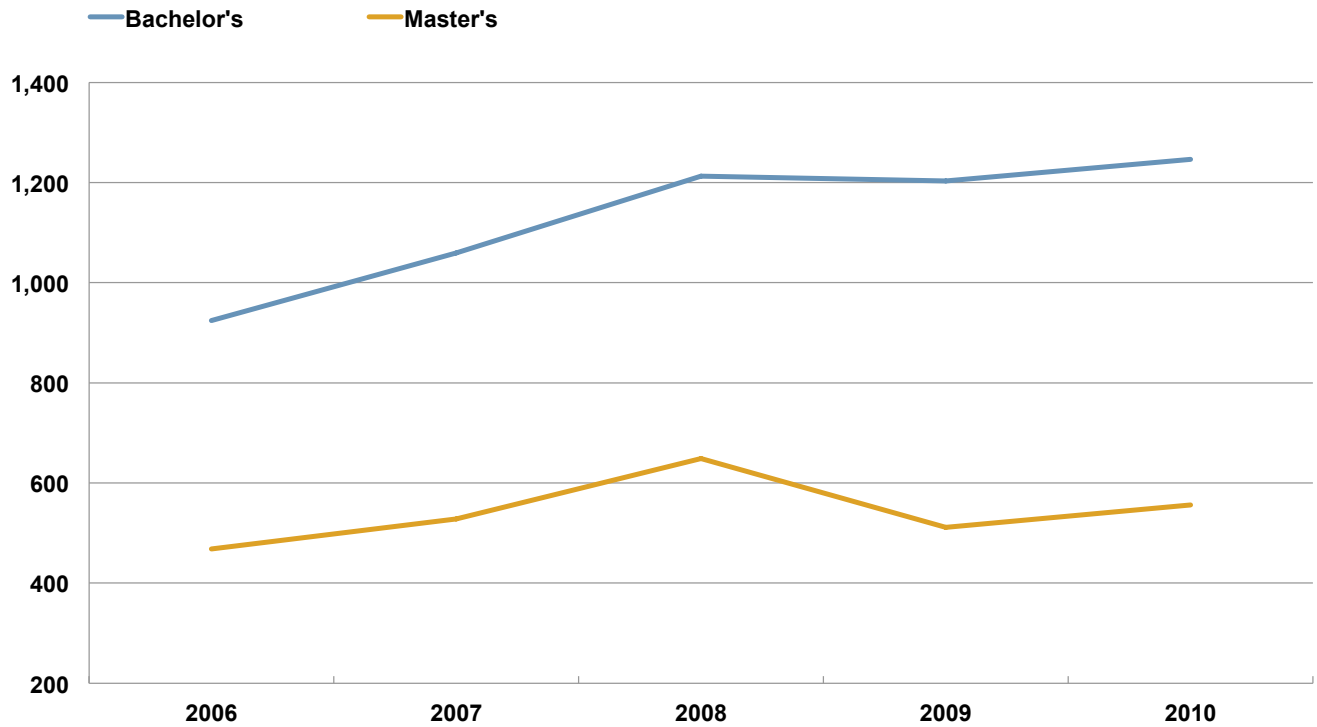
			Retention		Graduation		
			% Continued		% Graduated		
Cohort Type	Cohort Year	Cohort Size	to 2nd Year	to 3rd Year	4 Years	5 Years	6 Years
Black	2000	27	66.7%	37.0%	0.0%	7.4%	11.1%
	2001	12	58.3%	33.3%	0.0%	0.0%	16.7%
	2002	23	78.3%	60.9%	4.4%	26.1%	43.5%
	2003	61	80.3%	63.9%	13.1%	37.7%	41.0%
	2004	89	84.3%	61.8%	12.4%	28.1%	36.0%
	2005	83	71.1%	53.0%	9.6%	22.9%	
	2006	105	76.2%	58.1%	10.5%		
	2007	108	76.9%	63.9%			
	2008	111	79.3%	69.4%			
	2009	88	85.2%				
Asian Pacific Islander	2000	4	---	---	---	---	---
	2001	7	---	---	---	---	---
	2002	35	77.1%	65.7%	8.6%	34.3%	40.0%
	2003	23	82.6%	69.6%	13.0%	26.1%	34.8%
	2004	35	68.6%	62.9%	11.4%	34.3%	45.7%
	2005	43	69.8%	48.8%	14.0%	27.9%	
	2006	38	52.6%	52.6%	13.2%		
	2007	27	63.0%	48.1%			
	2008	51	66.6%	54.9%			
	2009	35	77.1%				
Hispanic	2000	5	---	---	---	---	---
	2001	19	79.0%	47.4%	10.5%	26.3%	31.6%
	2002	41	68.3%	56.1%	7.3%	26.8%	36.6%
	2003	70	74.3%	57.1%	5.7%	24.3%	35.7%
	2004	83	74.7%	55.4%	13.3%	32.5%	34.9%
	2005	92	67.4%	56.5%	14.1%	26.1%	
	2006	102	71.6%	59.8%	14.7%		
	2007	99	74.7%	65.7%			
	2008	108	74.1%	65.7%			
	2009	81	79.0%				
White	2000	442	72.4%	55.4%	14.5%	36.0%	41.4%
	2001	740	71.8%	53.2%	11.0%	29.0%	36.2%
	2002	695	71.2%	58.0%	15.3%	37.6%	44.5%
	2003	802	75.6%	63.3%	14.2%	38.7%	44.9%
	2004	782	73.9%	60.7%	15.2%	37.6%	43.1%
	2005	943	70.6%	55.7%	17.6%	36.9%	
	2006	839	73.1%	60.3%	21.7%		
	2007	779	69.8%	62.6%			
	2008	815	75.3%	51.8%			
	2009	754	81.1%				
Non-Resident Alien	2000	31	64.5%	58.1%	25.8%	41.9%	45.2%
	2001	40	75.0%	70.0%	20.0%	45.0%	55.0%
	2002	22	77.3%	63.6%	13.6%	27.3%	40.9%
	2003	18	66.7%	50.0%	11.1%	38.9%	38.9%
	2004	26	76.9%	76.9%	26.9%	57.7%	57.7%
	2005	28	89.3%	64.3%	21.4%	39.3%	
	2006	22	72.7%	72.7%	31.8%		
	2007	18	83.3%	72.2%			
	2008	12	58.3%	41.7%			
	2009	9	---				

Due to small cohort size, data is not shown for American Indian/Alaskan Native

DEGREES CONFERRED

2006 - 2010

	2006	2007	2008	2009	2010
Bachelor's	924	1059	1213	1203	1246
Master's	468	528	649	511	556



DEGREES CONFERRED

2006 - 2010 (ALL LEVELS) BY GENDER AND RACE

	2006	2007	2008	2009	2010
Female					
Non-Resident Alien	36	38	44	52	39
Black	23	37	59	43	68
American Indian	0	5	6	1	1
Asian Pacific Islander	16	26	27	26	17
Hispanic	28	40	48	56	50
White	814	914	1073	962	1056
Unknown	113	103	78	63	58
Female Total	1030	1163	1335	1203	1289
% Non-White*	8%	11%	12%	12%	11%
% Female	72%	71%	70%	68%	68%
Male					
Non-Resident Alien	23	34	22	40	23
Black	16	22	34	23	27
American Indian	2	1	2	0	2
Asian Pacific Islander	3	5	12	10	12
Hispanic	11	14	18	17	25
White	323	370	468	449	471
Unknown	32	33	27	27	35
Male Total	410	479	583	566	595
% Non-White*	9.0%	10.2%	12.4%	10.0%	12.3%
% Male	28.5%	29.2%	30.4%	32.0%	31.6%
Total					
Non-Resident Alien	59	72	66	92	62
Black	39	59	93	66	95
American Indian	2	6	8	1	3
Asian Pacific Islander	19	31	39	36	29
Hispanic	39	54	66	73	75
White	1137	1284	1541	1411	1527
Unknown	145	136	105	90	93
Total	1440	1642	1918	1769	1884
% Non-White*	8.0%	10.5%	11.8%	11.1%	11.7%
% Non-White excludes Non-Resident Alien students and students with unknown race.					

DEGREES CONFERRED

2006 - 2010 BY GENDER AND DEGREE

	2006	2007	2008	2009	2010
Female					
Bachelor of Arts	100	69	104	96	82
Bachelor of Science	401	477	491	519	515
Bachelor of Science Business Administration	88	114	140	120	139
Bachelor of Fine Arts	5	5	6	8	3
Bachelor of Liberal Studies	6	4	13	11	19
Bachelor of Social Work	28	22	30	31	30
Master of Arts	7	8	18	21	18
Master of Occupational Therapy	0	0	3	11	8
Master of Science	29	32	32	40	42
Master of Social Work	67	62	62	60	59
Master of Business Administration	11	14	15	10	12
Master of Education	226	288	337	208	252
Master of Arts in Teaching	24	24	45	40	46
MSN/MBA	1	0	0	0	0
Master of Arts/Master of Arts in Teaching	1	1	1	0	3
Certificate - Advanced Graduate Study	32	37	32	21	47
Other Graduate Certificates	4	4	4	1	7
Certificate - Teaching	0	2	2	6	7
Female Total	1030	1163	1335	1203	1289
Male					
Bachelor of Arts	46	52	47	63	73
Bachelor of Science	160	181	222	225	218
Bachelor of Science Business Administration	74	128	144	113	155
Bachelor of Fine Arts	7	3	3	6	4
Bachelor of Liberal Studies	8	3	8	3	6
Bachelor of Social Work	1	1	5	8	2
Master of Arts	7	13	10	13	8
Master of Occupational Therapy	0	0	0	1	0
Master of Science	12	10	17	15	11
Master of Social Work	7	8	11	5	9
Master of Business Administration	9	15	13	9	9
Master of Education	56	45	74	58	51
Master of Arts in Teaching	11	7	11	19	24
Master of Arts/Master of Arts in Teaching	0	1	0	1	3
MSN/MBA	0	0	0	0	1
Certificate - Advanced Graduate Study	10	12	14	18	8
Other Graduate Certificates	2	0	3	8	11
Certificate - Teaching	0	0	1	1	2
Male Total	410	479	583	566	595
Female and Male may not equal total degrees due to unknown gender.					

DEGREES CONFERRED

2006 - 2010 BY LEVEL AND RACE/ETHNICITY

	2006	2007	2008	2009	2010
Bachelors					
Non-Resident Alien	45	57	54	78	43
Black	23	50	84	61	90
American Indian	2	5	7	1	3
Asian Pacific Islander	14	26	30	33	26
Hispanic	29	46	54	66	69
White	753	837	943	910	979
Unknown	58	38	41	54	36
Bachelors Total	924	1059	1213	1203	1246
% Non-White*	8%	13%	16%	15%	16%
% Female	68%	65%	65%	65%	63%
Masters					
Non-Resident Alien	16	14	11	10	19
Black	13	9	7	5	5
American Indian	0	1	1	0	0
Asian Pacific Islander	5	4	9	3	3
Hispanic	9	8	12	7	6
White	357	411	555	455	480
Unknown	68	81	54	31	43
Masters Total	468	528	649	511	556
% Non-White*	7%	5%	5%	3%	3%
% Female	78%	81%	79%	76%	79%
Certificates					
Non-Resident Alien	1	1	1	4	0
Black	0	0	2	0	0
American Indian	0	0	0	0	0
Asian Pacific Islander	0	1	0	0	0
Hispanic	1	0	0	0	0
White	27	36	43	46	68
Unknown	19	17	10	5	14
CertificateTotal	48	55	56	55	82
% Non-White*	4%	3%	4%	0%	0%
% Female	75%	78%	68%	69%	74%
% Non-White excludes Non-Resident Alien students and students with unknown race.					

UNDERGRADUATE DEGREES CONFERRED

2006 - 2010 BY MAJOR

	2006	2007	2008	2009	2010
Business Administration	162	242	284	233	294
Nursing	81	125	162	165	146
Education	112	129	127	100	116
Criminal Justice	73	82	91	86	108
Psychology	65	61	78	89	97
Communications	59	71	58	105	68
English	37	26	35	39	46
History	27	27	36	30	46
Sport Movement and Science	46	44	58	46	41
Biology	25	36	29	36	38
Social Work	29	23	35	39	32
Art	41	40	38	42	29
Liberal Studies	14	7	21	14	25
Sociology	23	24	27	41	19
Geography	14	19	17	20	18
Theater	25	19	26	25	18
Athletic Training				7	14
Political Science	15	11	13	10	14
Fire Science	11	9	8	13	13
Occupational Therapy	8	5	16	6	11
Chemistry	10	10	16	5	9
Mathematics	9	18	9	6	9
Computer Science	15	11	8	5	8
Geological Science	4	7	6	5	8
Economics	4	3	4	8	5
Music	2	3	6	11	5
Spanish	6	3	3	11	5
Cartography	6	4	2	6	4
Office Management	1				
Total	924	1059	1213	1203	1246

To provide an unduplicated headcount, double majors are counted under only one major. Therefore, the counts for individual majors are not complete. This is particularly important since 2003 when students pursuing teaching with an education major were required to also complete a major in an arts and science discipline.

GRADUATE DEGREES CONFERRED

2006 - 2010 BY PROGRAM

	2006	2007	2008	2009	2010
Education	309	364	468	325	359
Social Work	74	70	73	65	68
Counseling	24	15	11	19	22
Business Administration	20	29	28	19	21
Nursing	13	17	19	20	19
English	18	9	11	16	18
History	5	14	17	19	14
Spanish	0	0	0	0	14
Occupational Therapy	0	0	3	12	8
Geo-Information	4	5	2	6	5
Criminal Justice	0	0	5	4	3
Mathematics	0	5	12	6	3
Industrial Organizational Psychology					2
Nursing/MBA	1	0	0	0	0
Total	468	528	649	511	556
	2006	2007	2008	2009	2010
CAGS - Education	42	47	46	38	51
Certified Financial Planner	4	2	1	8	14
Teacher Preparation	0	2	3	4	9
CAPS - Counseling	1	2	0	1	4
Certificate Education	0	0	0	3	3
Certificate Geo-Information Science	0	0	5	1	1
Certificate Nurse Education	1	2	1	0	0
Total	48	55	56	55	82

faculty and staff

**Faculty and Staff
2006 – 2010**



EMPLOYEES**TOTAL EMPLOYMENT AND FACULTY**

	2006	2007	2008	2009	2010
Total Employment	1,383	1,428	1,449	1,365	1,429
Full Time	836	840	869	829	834
Part Time	547	588	580	536	595
Part Time %	40%	41%	40%	39%	42%
Faculty					
FT Faculty	320	321	338	331	333
PT Faculty	397	416	433	428	446
Part Time %	55%	56%	56%	56%	57%
Full-Time Faculty					
Professor	113	114	116	117	126
Associate Professor	77	80	83	90	93
Assistant Professor	126	122	121	109	104
Instructor	4	5	18	15	10
Total faculty as a % of total employment	52%	52%	53%	56%	55%

FULL TIME FACULTY

BY RACE AND GENDER

	2006	2007	2008	2009	2010
Female					
Non-Resident Alien	0	0	0	1	3
Black	1	2	4	4	4
American Indian	0	1	1	0	0
Asian Pacific Islander	6	6	5	5	7
Hispanic	3	2	2	5	5
White	146	144	154	152	154
Unknown	4	5	7	7	6
Female Total	160	160	173	174	179
% Non-White*	6%	7%	7%	8%	9%
% Female	50%	50%	51%	53%	54%
Male					
Non-Resident Alien	0	0	1	2	2
Black	5	4	3	4	4
American Indian	0	0	0	0	0
Asian Pacific Islander	10	11	11	10	11
Hispanic	3	2	3	3	3
White	139	139	142	134	131
Unknown	3	5	5	4	3
Male Total	160	161	165	157	154
% Non-White*	11%	11%	11%	11%	12%
% Male	50%	50%	49%	47%	46%
Total					
Non-Resident Alien	0	0	1	3	5
Black	6	6	7	8	8
American Indian	0	1	1	0	0
Asian Pacific Islander	16	17	16	15	18
Hispanic	6	4	5	8	8
White	285	283	296	286	285
Unknown	7	10	12	11	9
Total	320	321	338	331	333
% Non-White*	9%	9%	9%	10%	11%
% Non-White excludes Non-Resident Alien and Unknown					

FULL TIME NON-FACULTY

BY RACE AND GENDER

	2006	2007	2008	2009	2010
Female					
Non-Resident Alien	3	3	4	3	3
Black	7	10	10	10	10
American Indian	1	2	2	2	2
Asian Pacific Islander	4	3	3	3	2
Hispanic	12	13	14	14	14
White	261	255	265	246	245
Unknown	8	9	10	9	10
Female Total	296	295	308	287	286
% Non-White*	8%	10%	10%	11%	10%
% Female	57%	57%	58%	58%	57%
Male					
Non-Resident Alien	1	1	1	1	0
Black	18	16	15	15	14
American Indian	0	0	0	0	0
Asian Pacific Islander	3	3	4	4	4
Hispanic	18	19	17	17	16
White	168	173	174	162	167
Unknown	12	12	12	12	14
Male Total	220	224	223	211	215
% Non-White*	19%	18%	17%	18%	17%
% Male	43%	43%	42%	42%	43%
Total					
Non-Resident Alien	4	4	5	4	3
Black	25	26	25	25	24
American Indian	1	2	2	2	2
Asian Pacific Islander	7	6	7	7	6
Hispanic	30	32	31	31	30
White	429	428	439	408	412
Unknown	20	21	22	21	24
Total	516	519	531	498	501
% Non-White*	13%	13%	13%	14%	13%
% Non-White excludes Non-Resident Alien and Unknown					

PART TIME FACULTY

BY RACE AND GENDER

	2006	2007	2008	2009	2010
Female					
Non-Resident Alien	1	1	2	0	4
Black	4	4	3	5	7
American Indian	0	0	0	0	0
Asian Pacific Islander	4	2	2	5	8
Hispanic	5	5	6	3	4
White	188	197	196	216	216
Unknown	26	31	33	27	23
Female Total	228	240	242	256	262
% Non-White*	6%	5%	5%	6%	8%
% Female	57%	58%	56%	60%	59%
Male					
Non-Resident Alien	0	1	1	1	3
Black	2	3	3	1	1
American Indian	0	1	1	1	1
Asian Pacific Islander	2	1	1	0	1
Hispanic	1	1	2	1	2
White	143	146	160	149	159
Unknown	21	23	23	19	17
Male Total	169	176	191	172	184
% Non-White*	3%	4%	4%	2%	3%
% Male	43%	42%	44%	40%	41%
Total					
Non-Resident Alien	1	2	3	1	7
Black	6	7	6	6	8
American Indian	0	1	1	1	1
Asian Pacific Islander	6	3	3	5	9
Hispanic	6	6	8	4	6
White	331	343	356	365	375
Unknown	47	54	56	46	40
Total	397	416	433	428	446
% Non-White*	5%	5%	5%	4%	6%
* Non-White excludes Non-Resident Alien and Unknown					
Race and gender information for part-time employees was not reported in 2004.					

PART TIME NON-FACULTY

BY RACE AND GENDER

	2006	2007	2008	2009	2010
Female					
Non Resident Alien	3	3	3	2	1
Black	4	2	2	0	2
American Indian	0	0	0	1	1
Asian Pacific Islander	4	4	0	1	0
Hispanic	10	12	2	2	8
White	83	94	90	63	88
Unknown	3	8	7	4	5
Female Total	107	123	104	73	105
% Non-White*	18%	16%	4%	6%	11%
% Female	71%	72%	71%	68%	70%
Male					
Non Resident Alien	0	1	0	0	0
Black	0	1	1	0	1
American Indian	0	0	0	0	0
Asian Pacific Islander	0	0	0	0	1
Hispanic	1	0	0	2	5
White	38	43	39	31	33
Unknown	4	4	3	2	4
Male Total	43	49	43	35	44
% Non-White*	3%	2%	3%	6%	18%
% Male	29%	28%	29%	32%	30%
Total					
Non Resident Alien	3	4	3	2	1
Black	4	3	3	0	3
American Indian	0	0	0	1	1
Asian Pacific Islander	4	4	0	1	1
Hispanic	11	12	2	4	13
White	121	137	129	94	121
Unknown	7	12	10	6	9
Total	150	172	147	108	149
% Non-White*	14%	12%	4%	6%	13%
% Non-White excludes Non-resident Alien and Unknown.					

finance

Finance
2006 – 2010



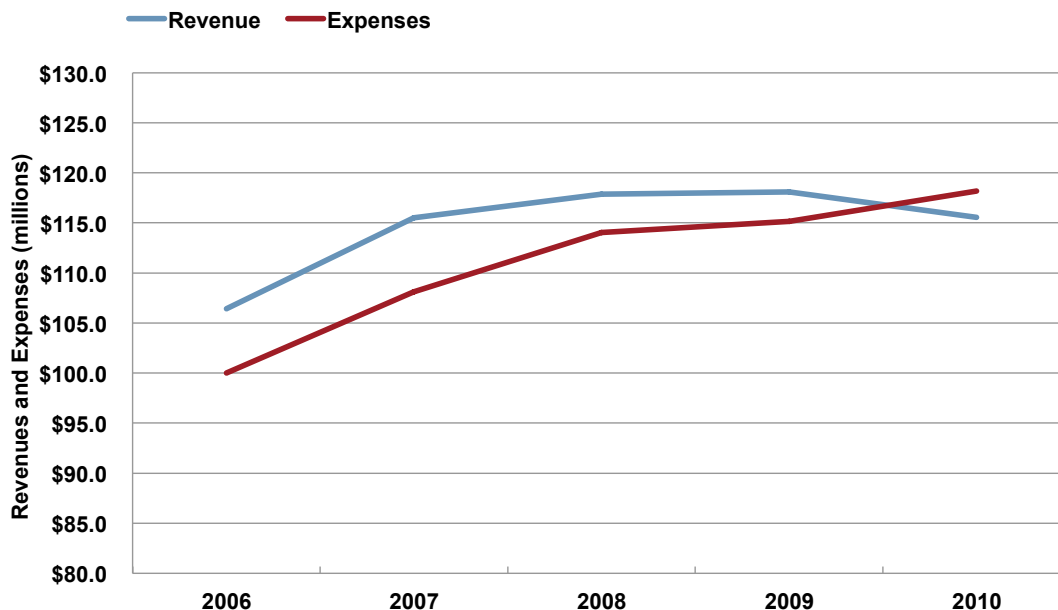
REVENUES AND OPERATING EXPENSES (IN MILLIONS)

REVENUES	2006	2007	2008	2009	2010
Local Tuition and Fees	\$36.8	\$39.2	\$40.3	\$47.0	\$47.7
State Appropriations	\$45.2	\$49.8	\$52.5	\$46.6	\$37.6
Federal Grants and Contracts	\$7.1	\$7.1	\$7.6	\$8.4	\$12.6
State Grants and Contracts	\$4.4	\$4.6	\$4.6	\$4.5	\$4.1
Private Grants and Gifts	\$1.1	\$1.4	\$1.2	\$1.3	\$1.3
Independent Operations	\$0.0	\$0.0	\$0.0	\$0.0	\$0.0
Other	\$4.1	\$5.5	\$3.4	\$2.1	\$2.4
Auxiliary Enterprises	\$7.6	\$8.0	\$8.2	\$8.2	\$10.0
Total	\$106.4	\$115.5	\$117.9	\$118.1	\$115.6

OPERATING EXPENSES	2006	2007	2008	2009	2010
Instruction	\$37.3	\$42.5	\$48.1	\$45.4	\$54.7
Public Service	\$0.3	\$0.4	\$0.4	\$0.4	\$0.5
Academic Support	\$16.6	\$17.0	\$15.8	\$14.1	\$13.7
Student Services	\$8.2	\$9.2	\$10.2	\$11.1	\$13.2
Institution Support	\$17.4	\$19.0	\$19.7	\$20.1	\$21.2
Plant Operation and Maintenance	\$11.4	\$10.9	\$10.8	\$11.4	-----
Scholarships and Fellowships	\$0.2	\$0.3	\$0.4	\$4.6	\$5.7
Auxiliary Enterprises	\$8.6	\$8.9	\$8.7	\$7.9	\$9.1
Total	\$100.0	\$108.1	\$114.1	\$115.1	\$118.2

Revenues exclude capital and additions to endowment. Operating expenses exclude depreciation.

Beginning with FY10 data, NCES is requiring that expenses for operations and maintenance, depreciation and interest be allocated across all other IPEDS categories except scholarships. Institutions are allowed to distribute these expenses based on any of three parameters or a combination of the three: total salary expenses; total payroll expenses including fringe benefits; or total expenses. SSU has chosen to distribute on the basis of total salaries. The amounts distributed in FY10 were: O&M, \$11.0M; depreciation, \$3.7M; and interest, \$0.4M.



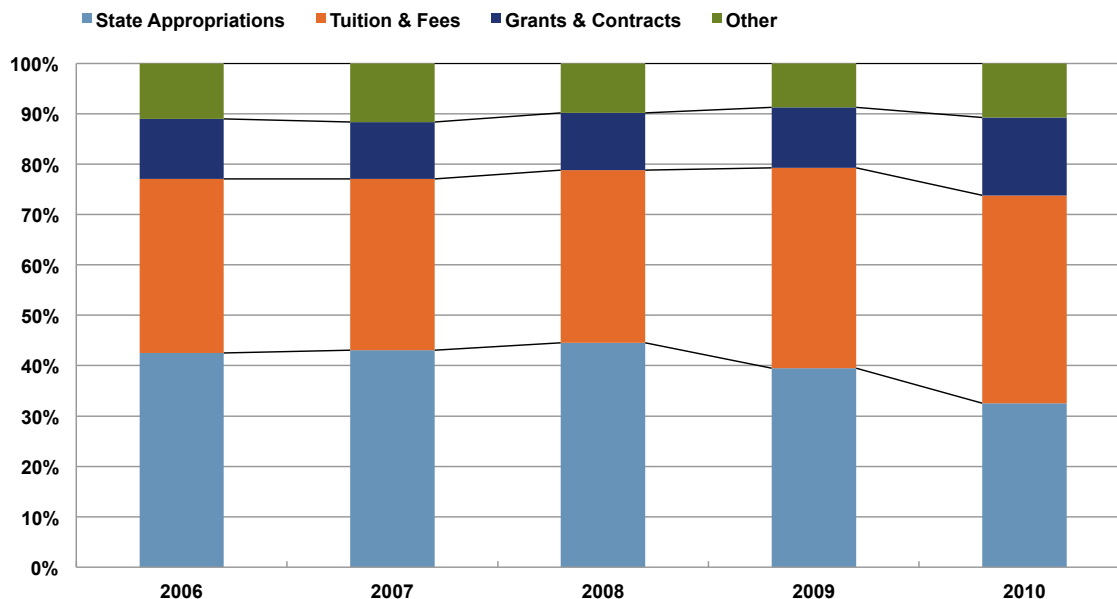
SOURCES OF REVENUES AND TYPES OF EXPENDITURES (IN PERCENT)

REVENUES	2006	2007	2008	2009	2010
Local Tuition and Fees	35%	34%	34%	40%	41%
State Appropriations	43%	43%	45%	39%	33%
Federal Grants and Contracts	7%	6%	6%	7%	11%
State Grants and Contracts	4%	4%	4%	4%	4%
Private Grants and Gifts	1%	1%	1%	1%	1%
Independent Operations	0%	0%	0%	0%	0%
Other	4%	5%	3%	2%	2%
Auxiliary Enterprises	7%	7%	7%	7%	9%
Total	100%	100%	100%	100%	100%

Operating Expenses	2006	2007	2008	2009	2010
Instruction	37%	39%	42%	39%	46%
Public Service	0%	0%	0%	0%	0%
Academic Support	17%	16%	14%	12%	12%
Student Services	8%	9%	9%	10%	11%
Institution Support	17%	18%	17%	17%	18%
Plant Operation and Maintenance	11%	10%	9%	10%	-----
Scholarships and Fellowships	0%	0%	0%	4%	5%
Auxiliary Enterprises	9%	8%	8%	7%	8%
Total	100%	100%	100%	100%	100%

Revenues exclude capital and additions to endowment. Operating expenses exclude depreciation.

Beginning with FY10 data, NCES is requiring that expenses for operations and maintenance, depreciation and interest be allocated across all other IPEDS categories except scholarships. Institutions are allowed to distribute these expenses based on any of three parameters or a combination of the three: total salary expenses; total payroll expenses including fringe benefits; or total expenses. SSU has chosen to distribute on the basis of total salaries. The amounts distributed in FY10 were: O&M, \$10,986,231; depreciation, \$3,661,176; and interest, \$381,091.



GLOSSARY AND DATA DEFINITIONS

This glossary is organized by the order in which a term first appears in the Fact Book. Many of these terms have more than one meaning. The definition reflects how the term is used in the section. If a term is defined only once, the term should be interpreted in the same manner in all sections of the Fact Book.

Admissions Data:

Freshman – An applicant who has not attended a college other than Salem State University since high school

SAT – Refers to the SAT Reasoning Test. The Salem State Admissions Office utilizes the Critical Reading/Verbal and Mathematics/Math components to assist in making admissions decisions. The component parts scores, maximum 800, can be combined into a single score totaling up to 1600.

Transfer – An applicant who attended a postsecondary institution other than Salem State University prior to application to Salem State University

Applied – Counts only complete and actionable applications for the Fall Term

Acceptance Rate – The proportion of applicants accepted

Yield – The proportion of accepted applicants who are enrolled in classes on the enrollment freeze date

Non Resident Alien – Individuals who are not citizens, native or naturalized, of the United States. Under federal reporting guidelines Non-Resident Alien is a separate racial reporting classification. Non-resident alien students who might designate a racial identity for themselves cannot be reported under that racial identity.

Unknown – Includes unknown and other

Enrollment Data:

All College – Includes all students enrolled in credit courses both graduate and undergraduate, day or evening

Undergraduate – Includes students enrolled in undergraduate credit courses

Graduate – Includes students enrolled in graduate credit courses

To ensure an unduplicated headcount, the few students enrolled in both graduate and undergraduate courses are counted as one or the other based on the majority of the enrolled credits. If a student is enrolled in an equal number of graduate and undergraduate credits, the student is assigned to the category of any matriculated program. If such a student is not matriculated, the student is counted as graduate.

Degree Seeking – A student who has been admitted to a course of study intended to result in a degree or certificate

Full Time – An undergraduate student enrolled in 12 or more credits or a graduate student enrolled in 9 or more credits in the given semester

Retention and Completion:

Cohort – Defined each fall including only new, degree seeking students who have not attended any other postsecondary institution since high school and who attended college on a full time basis in their first semester

Retention Rate – Proportion of the cohort for a given year who are enrolled in the following fall

Graduation Rate – Proportion of the cohort for a given year who have graduated within a given period of time

