



Educating you for life

2009

SALEM STATE COLLEGE FACT BOOK

TABLE OF CONTENTS

INTRODUCTION	02
GLOSSARY AND DATA DEFINITIONS	03
SECTION I – COLLEGE PROFILE	
Salem State Undergraduate Programs	06
Salem State Graduate Programs	08
SECTION II – ADMISSIONS DATA	
Fall Admissions at a Glance	12
Freshmen Applications, Admissions, Enrollment	20
By Gender	21
By Race	22
Freshmen Top Fifteen Feeder High Schools	23
Freshmen Majors	24
Transfer Applications, Admissions, Enrollment	25
By Gender	26
By Race	27
Transfer Top Fifteen Feeder Colleges	28
Transfer Majors	29
Graduate Applications, Admissions, Enrollment	30
By Gender	30
By Race	31
Graduate Programs	32
SECTION III – ENROLLMENT DATA	
Enrollment at a Glance	34
Fall Headcount 2005 – 2009	38
Undergraduate Enrollment	
Fall Undergraduate Headcount 2005 – 2009	39
Fall Degree Seeking Undergraduate Headcount 2005 – 2009	40
Fall Degree Seeking Full Time Undergraduate Headcount 2005 – 2009	41
Fall Degree Seeking Part Time Undergraduate Headcount 2005 – 2009	42
Fall Non-Degree Seeking Undergraduate Headcount 2005 – 2009	43
Graduate Enrollment	
Fall Graduate Headcount 2005 – 2009	44
Fall Degree Seeking Graduate Headcount 2005 – 2009	45
Fall Degree Seeking Full Time Graduate Headcount 2005 – 2009	46
Fall Degree Seeking Part Time Graduate Headcount 2005 – 2009	47
Fall Non-Degree Seeking Graduate Headcount 2005 – 2009	48
Annual Enrollment Headcount and FTE 2005 – 2009	49
Enrollment by Major/Program	
Undergraduate Headcount by Major 2005 – 2009	50
Graduate Headcount by Program 2005 – 2009	51
SECTION IV – RETENTION AND COMPLETION	
Outcomes at a Glance	54
Retention and Continuation, Total and by Gender	58
Retention and Continuation, by Race	59
Graduation Rates, Total and by Gender	60
Graduation Rates, by Race	61
Degrees Conferred by Gender and Race	62
Degrees Conferred by Degree and Gender	63
Degrees Conferred by Level and Race	64
Undergraduate Degrees Conferred by Major	65
Graduate Degrees Conferred by Program	66
SECTION V – COLLEGE RESOURCES	
College Resources at a Glance	68
Revenues and Expenses	74
Full Time Employees by Race and Gender	75
Part Time Employees by Race and Gender	76
Full Time Faculty by Race and Gender	77
Full Time Faculty by Academic Rank	78
Part Time Faculty by Race and Gender	79
ENDNOTES AND SOURCES	80

INTRODUCTION

The following is the *2009 Salem State College Fact Book*. The Fact Book is derived from and aligns with data reported to external organizations like the National Center for Education Statistics (NCES) through the Integrated Postsecondary Education Data System (IPEDS) and the Massachusetts Department of Higher Education through the Higher Education Information Resource System (HEIRS). It provides a single source summary of most of the information in those individual reports and provides a convenient source of trending and general analysis.

Fall enrollments by major for undergraduate students and by program for graduate students do not align with externally reported data for several reasons. These counts exclude non-degree seeking students. Students matriculated in more than one major or program are counted in all of their matriculated programs. Therefore, some students are omitted entirely and others are counted twice.

This Fact Book adds a new section for the College Profile. This year it includes the college's majors and minors by department and a roster of graduate programs. This section will be expanded in future editions.

Institutions have a wide variety of data and information needs. This Fact Book reflects data from comparable points in time, over time. The data can inform decision makers by delineating trends as well as providing context and perspective. Today's data collection and retrieval systems provide far more immediate information for operational decisions and the Fact Book should be used to supplement that data and for providing general information about the college.

Theresa Jenkins took a leadership role creating the new section and assembling the Fact Book this year.

My sincere appreciation and thanks to Theresa, it would not have been created without her effort. Thanks to Steve Jervey, Budget Director, who prepares the revenue and expense report that is the basis of the Resource section of the book.

Karen Sayles

Director, Institutional Research and Assessment

May, 2010

GLOSSARY AND DATA DEFINITIONS

This glossary is organized by the order in which a term first appears in the Fact Book. Many of these terms have more than one meaning. The definition reflects how the term is used in the section. If a term is defined only once, the term should be interpreted in the same manner in all sections of the Fact Book.

Admissions Data:

Freshman – An applicant who has not attended a college other than Salem State College since high school

SAT – Refers to the SAT Reasoning Test. The Salem State Admissions Office utilizes the Critical Reading/Verbal and Mathematics/Math components to assist in making admissions decisions. The component parts scores, maximum 800, can be combined into a single score totaling up to 1600.

Transfer – An applicant who attended a postsecondary institution other than Salem State College prior to application to Salem State College

Applied – Counts only complete and actionable applications for the Fall Term

Acceptance Rate – The proportion of applicants accepted

Yield – The proportion of accepted applicants who are enrolled in classes on the enrollment freeze date

Non Resident Alien – Individuals who are not citizens, native or naturalized, of the United States. Under federal reporting guidelines Non Resident Alien is a separate racial reporting classification. Non resident alien students who might designate a racial identity for themselves cannot be reported under that racial identity.

Unknown – Includes unknown and other

Enrollment Data:

All College – Includes all students enrolled in credit courses both graduate and undergraduate, day or evening

Undergraduate – Includes students enrolled in undergraduate credit courses

Graduate – Includes students enrolled in graduate credit courses

To ensure an unduplicated headcount, the few students enrolled in both graduate and undergraduate courses are counted as one or the other based on the majority of the enrolled credits. If a student is enrolled in an equal number of graduate and undergraduate credits, the student is assigned to the category of any matriculated program. If such a student is not matriculated, the student is counted as graduate.

Degree Seeking – A student who has been admitted to a course of study intended to result in a degree or certificate

Full Time – An undergraduate student enrolled in 12 or more credits or a graduate student enrolled in 9 or more credits in the given semester

Retention and Completion:

Cohort – Defined each fall including only new, degree seeking students who have not attended any other postsecondary institution since high school and who attended college on a full time basis in their first semester

Retention Rate – Proportion of the cohort for a given year who are enrolled in the following fall

Graduation Rate – Proportion of the cohort for a given year who have graduated within a given period of time

college profile



SALEM STATE UNDERGRADUATE PROGRAMS

School of Arts & Sciences

Department of:	Major	Concentrations	Minors
Art + Design	Art	Art Education Art History Graphic Design Interactive Multimedia Photography Painting Printmaking 3-D Studio	2-Dimensional 3-Dimensional Art History Graphic Design Interactive Multimedia Photography
Biology	Biology	Aquaculture Cell and Molecular Biology Environmental Biology Marine Biology Medical Technology Nuclear Medicine Technology	
Chemistry/Physics	Chemistry	Biochemistry	Chemistry Physics
Communications	Communications	Advertising Journalism Public Relations	Communications
Computer Science	Computer and Information Studies		Computer Studies
Economics	Economics		Economics
English	English	Creative Writing Dramatic Literature Literature Professional Writing Writing	
Foreign Languages	Spanish		French Italian Spanish Foreign Languages
Geography	Geography Cartography and Geographic Information Systems	Environment Regional Planning and Development Travel and Tourism	
Geological Sciences	Geological Science	Geology Earth Policy Earth Resources Environmental Geology Earth Science Geoarcheology Geotechnology Marine Geology	Geology Science Earth Science
History	History	Applied History Africa, Asia and Latin American History European History United States History	History
Interdisciplinary Studies	Liberal Studies	American Studies Peace and Intercultural Relations Applied Ethics Philosophy of Art and Culture Interdisciplinary Studies	African-American Studies Asian Studies Eastern European and Russian Studies Information Technology in the Arts and Sciences Latin American & Latino Studies Marine Studies Peace Studies Pre-Law Studies Religious Studies Urban Studies Women's Studies

Department of:	Major	Concentrations	Minors
Mathematics	Mathematics	Computer Science	Mathematics
Music	Music		Music
Philosophy			Philosophy
Political Science	Political Science	American Politics Comparative Politics International Politics	Political Science
Psychology	Psychology		Psychology
Sociology	Sociology	Child Studies Criminal Justice Computer Science and Research Cultural Diversity Gerontology Human Behavior and Organization	Sociology
Sport and Movement Science	Sport and Movement Science Athletic Training	Aquatic Management Sport Management Dance Fitness/Wellness Health and Consumer Science Leisure Studies Physical Education	Coaching Dance Health and Consumer Science Sport Management
Theatre and Speech Communication	Theatre Arts		Speech Communication

Bertolon School of Business

Department of:	Major	Concentrations	Minors
Accounting and Finance	Business Administration	Accounting Accounting and Finance Finance	Accounting
Management		Management Entrepreneurship Human Resources Management Hospitality Management International Business	Management Entrepreneurship
Marketing and Decision Sciences		Management Information Systems Marketing Operations and Decision Sciences	Marketing
		BS Fire Science Administration	

Schools of Human Services

School of Nursing	Major	Concentrations	Minors
	Nursing (BSN) LPN to BSN RN to BSN		
School of Education	Major	Concentrations	Minors
	Education	Early Childhood Education Elementary Education Middle School Subject Matter	Secondary Education
School of Social Work	Major	Concentrations	Minors
	Social Work		
Department of:	Major	Concentrations	Minors
Criminal Justice	Criminal Justice	Administration Forensics Policy and Management Research Technology and Research	Criminal Justice
Occupational Therapy	Occupational Health Studies		

SALEM STATE GRADUATE PROGRAMS

School of Arts and Sciences

Department of:	Degree	Concentrations	Certificates and Professional Development
Art + Design	Master of Art in Teaching Art		
Biology	Master of Art in Teaching Biology		
Chemistry/Physics	Master of Art in Teaching Chemistry		
English	Master of Art English Master of Art in Teaching English Master of Art in Teaching English as a Second Language Master of Art / Master of Art in Teaching English		Certificate in Teaching English as a Second Language
Foreign Languages	Master of Art in Teaching Spanish		
Geography	Master of Science Geo-Information Science		Certificate in Geo-Information Science Certificate in Travel and Tourism
Geological Sciences	Master of Art in Teaching in Middle School General Science		
History	Master of Art History Master of Art in Teaching History		
Mathematics	Master of Art in Teaching Mathematics Master of Art in Teaching Middle School Mathematics Master of Science Mathematics		
Psychology	Master of Science Industrial / Organizational Psychology Master of Science Counseling and Psychological Services	Mental Health Counseling Marriage and Family Therapy Industrial/Organizational Counseling	Advanced Professional Studies in Counseling
Criminal Justice	Master of Criminal Justice		
Occupational Therapy	Bachelor of Science / Master of Science Occupational Therapy		

Bertolon School of Business

Program	Concentrations	Certificates and Professional Development
Master of Business Administration (MBA)		Certificate in Business Certificate in Financial Planning

School of Nursing

Program	Concentrations	Certificates and Professional Development
Master of Science in Nursing RN/MSN MSN/MBA Direct Entry/MSN		Certificate in Nursing Education

School of Education

Program	Concentrations	Certificates and Professional Development
Master of Education	Bilingual Education Early Childhood Education Educational Leadership Elementary Education Higher Education in Student Affairs Library Media Studies Middle School Education Physical Education Reading School Business Officer School Counseling Secondary Education Special Education Technology in Education	CAGS in Education Certificate in School Adjustment Counseling Licensure in Early Childhood Education Licensure in Elementary Education Licensure in Fast Track Mathematics Licensure in Fast Track Science Licensure in Middle School Education Licensure in Reading Licensure in School Counseling Licensure in Secondary Education Licensure in Special Education

School of Social Work

Major	Concentrations	Certificates and Professional Development
Master of Social Work	Child and Family Services Health/Mental Health Services Older Adult End-of-Life Care Services	

LEFT BLANK INTENTIONALLY

admissions

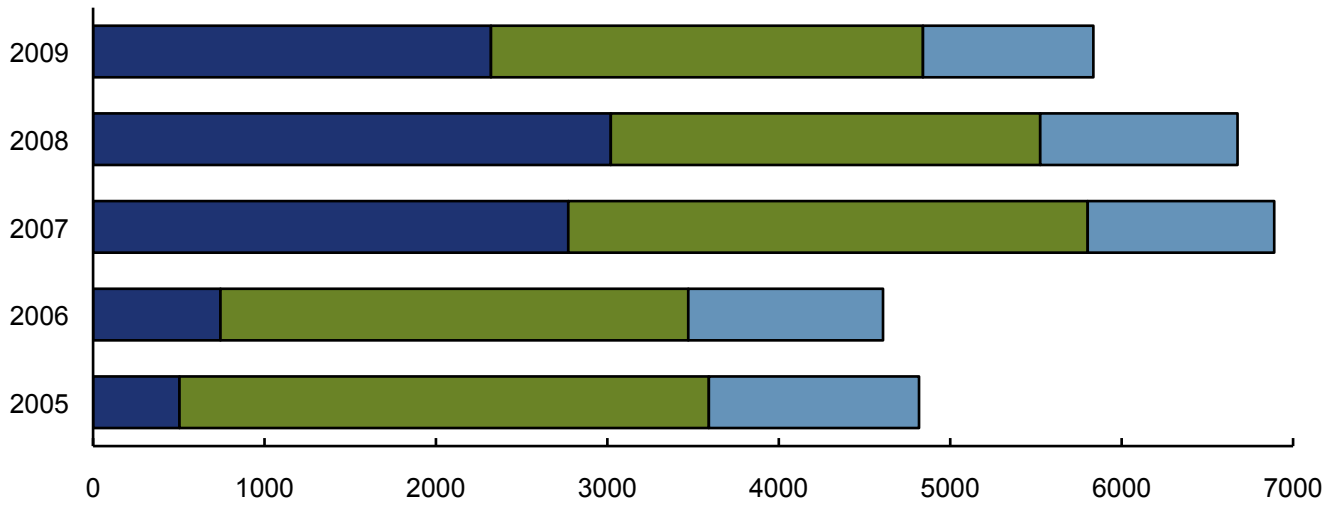
**Fall Admissions
at a Glance
2005 – 2009**



FRESHMAN ADMISSIONS: FALL 2005 – 2009

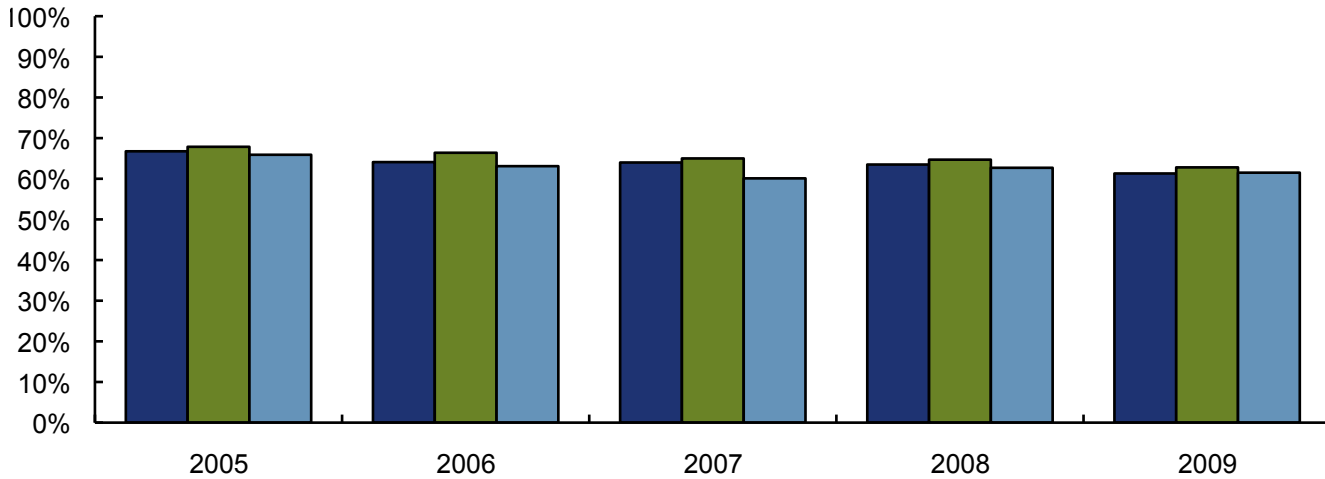
Freshman Applications Fall

■ Not Accepted ■ Accepted ■ Accepted Enrolled



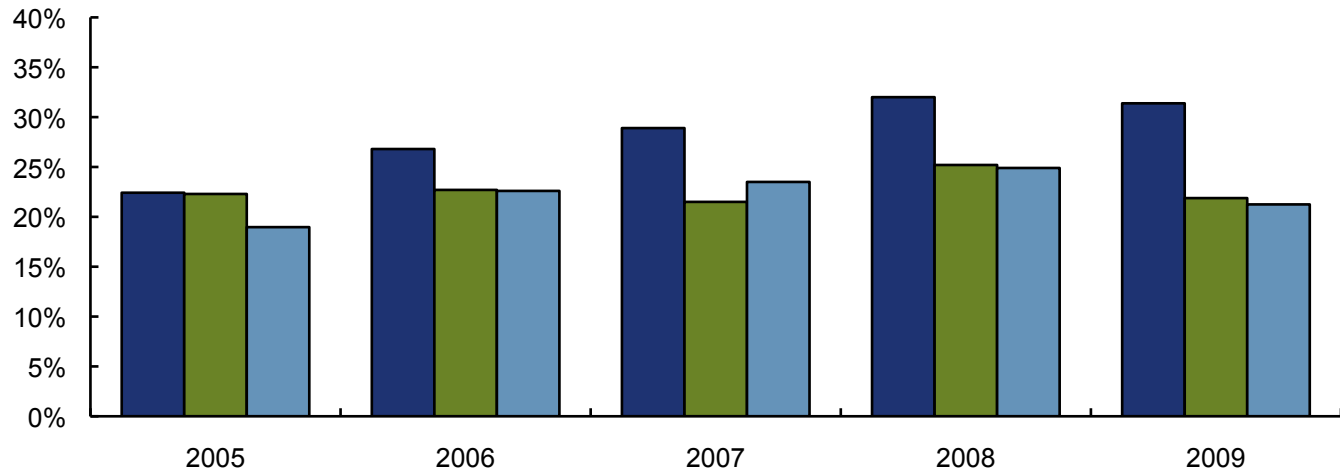
Females as a Percent of Freshman Applicants, Accepted, and Enrolled

■ Applied ■ Accepted ■ Enrolled



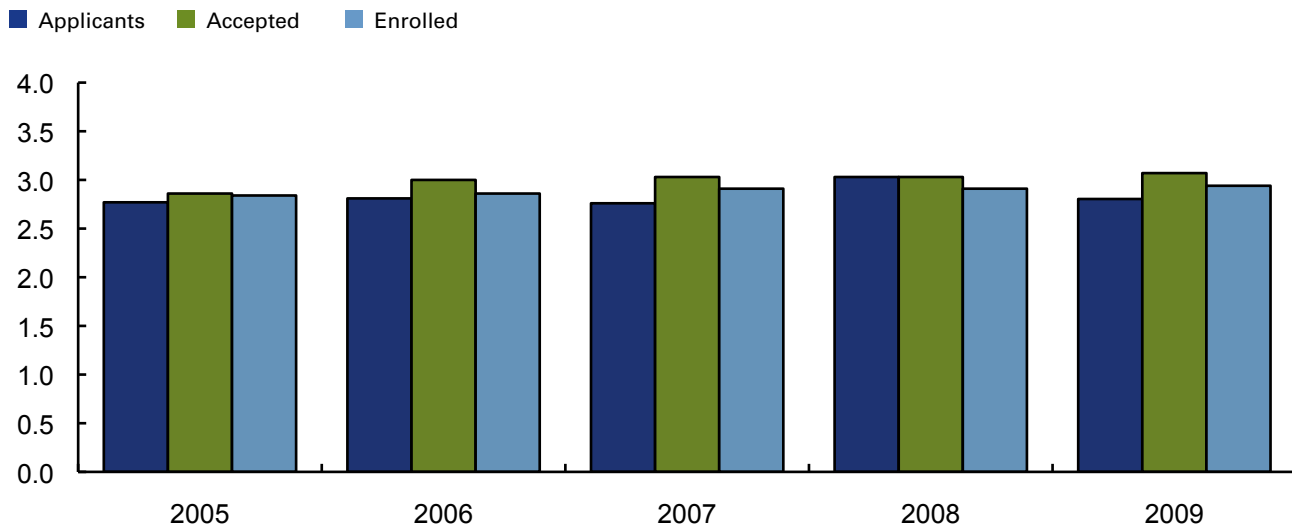
Percent of Freshman Applicants, Accepted, and Enrolled Who are Not White

■ Applied ■ Accepted ■ Enrolled

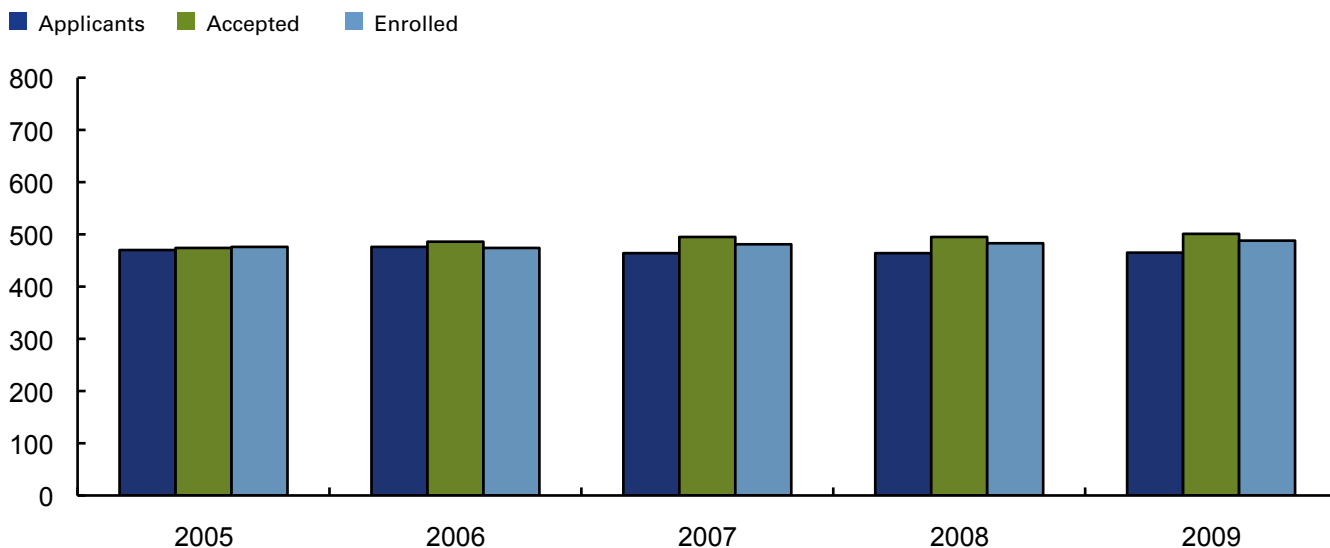


FRESHMAN ADMISSIONS: FALL 2005 – 2009

Average High School GPA of Applicants, Accepted, and Enrolled Freshmen



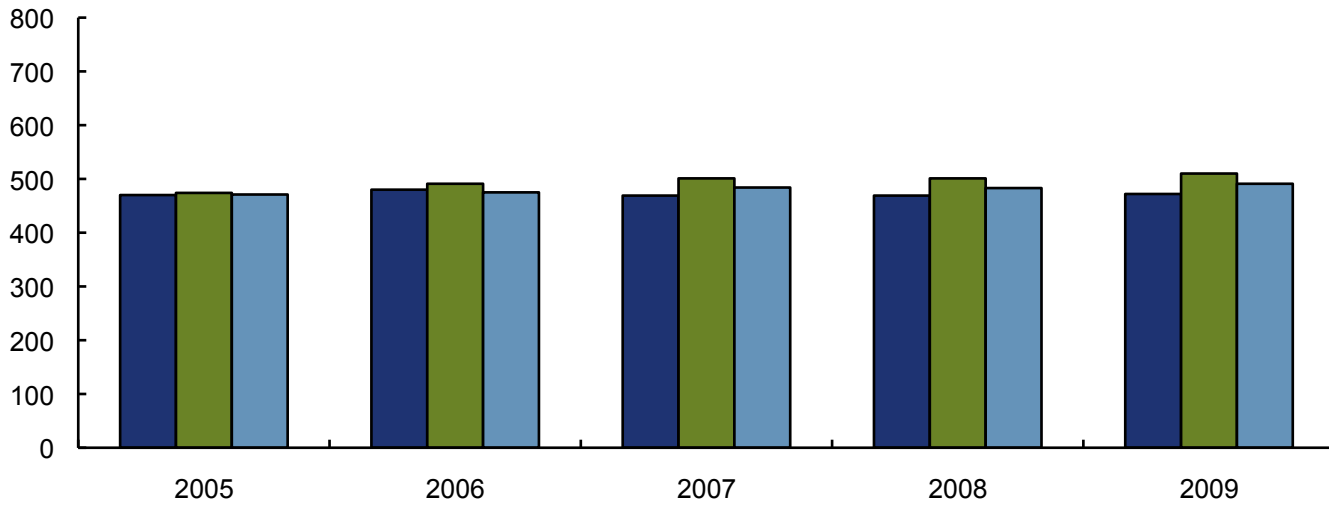
Average Verbal SAT of Applicants, Accepted, and Enrolled Freshmen



FRESHMAN ADMISSIONS: FALL 2005 – 2009

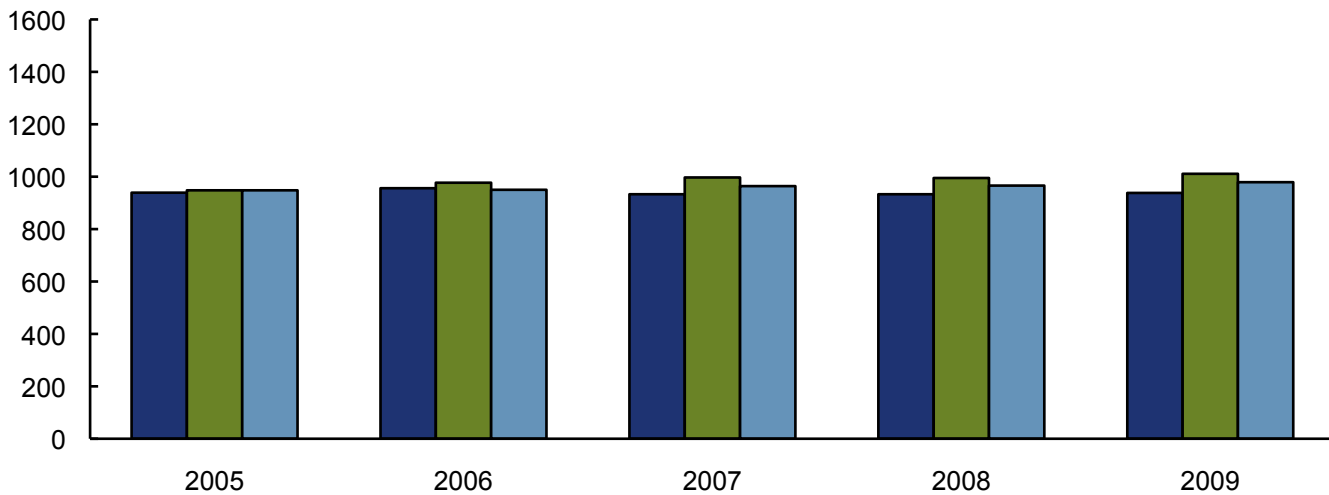
Average Math SAT of Applicants, Accepted, and Enrolled Freshmen

■ Applicants ■ Accepted ■ Enrolled



Average Combined SAT of Applicants, Accepted, and Enrolled Freshmen

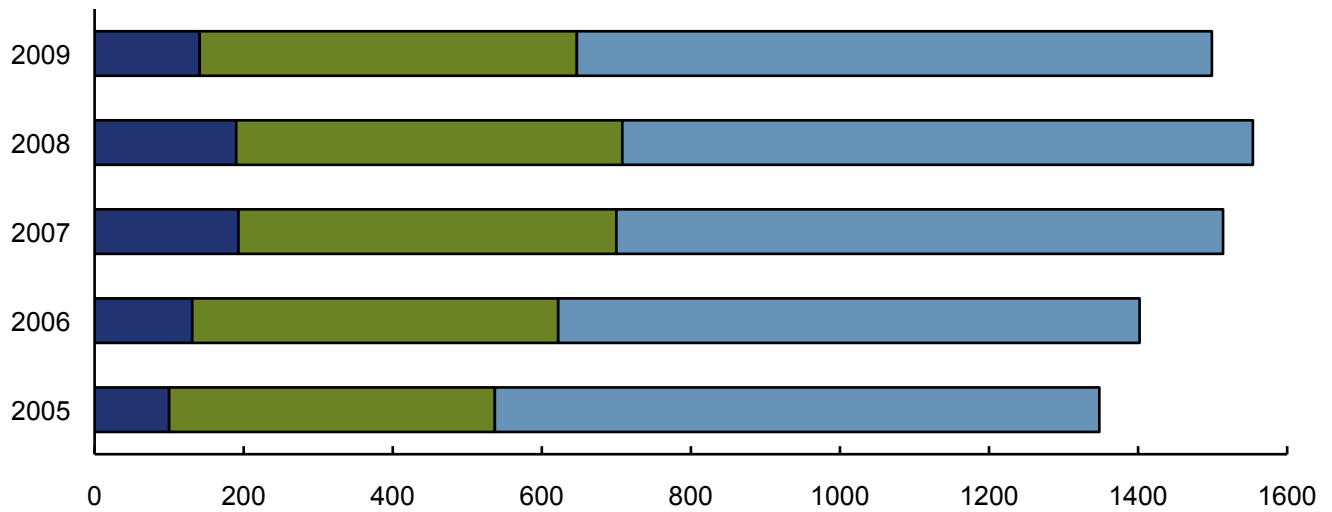
■ Applicants ■ Accepted ■ Enrolled



TRANSFER ADMISSIONS: FALL 2005 – 2009

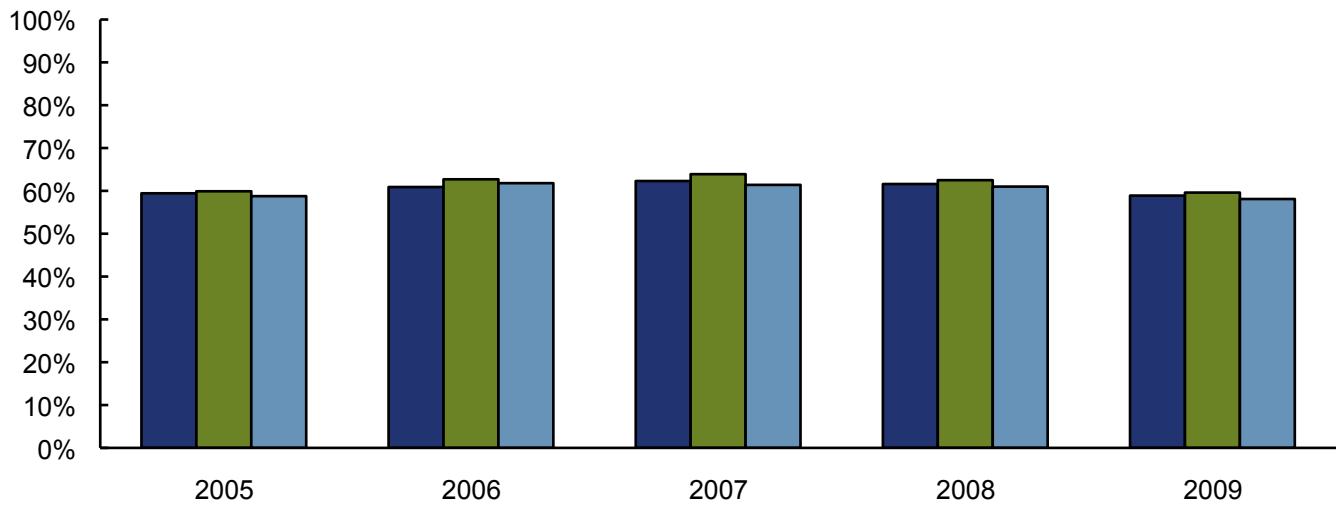
Transfer Applications Fall

■ Not Accepted ■ Accepted ■ Accepted Enrolled



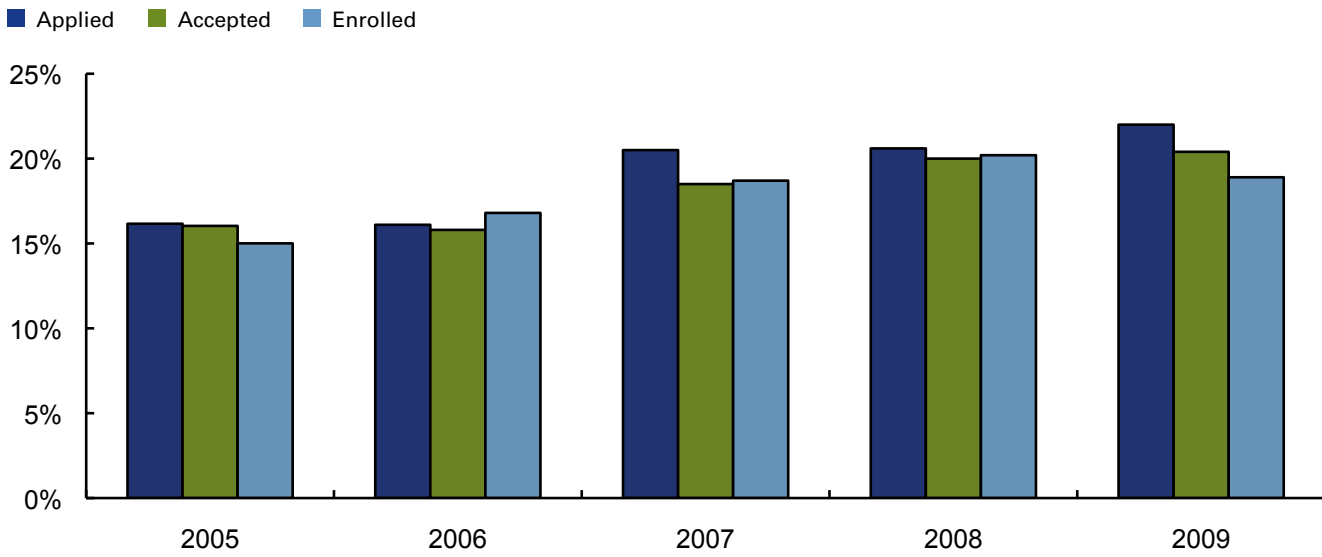
Female as a Percent of Transfer Applicants, Accepted, and Enrolled

■ Applied ■ Accepted ■ Enrolled

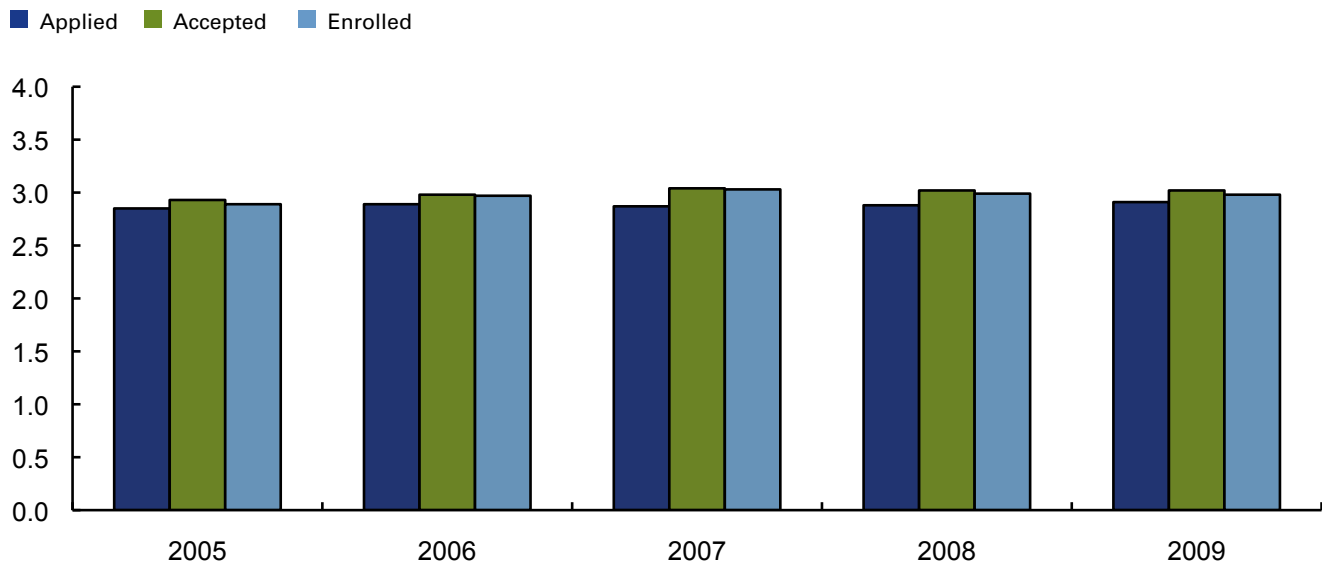


TRANSFER ADMISSIONS: FALL 2005 – 2009

Percent of Transfer Applicants, Accepted, and Enrolled who are Not White



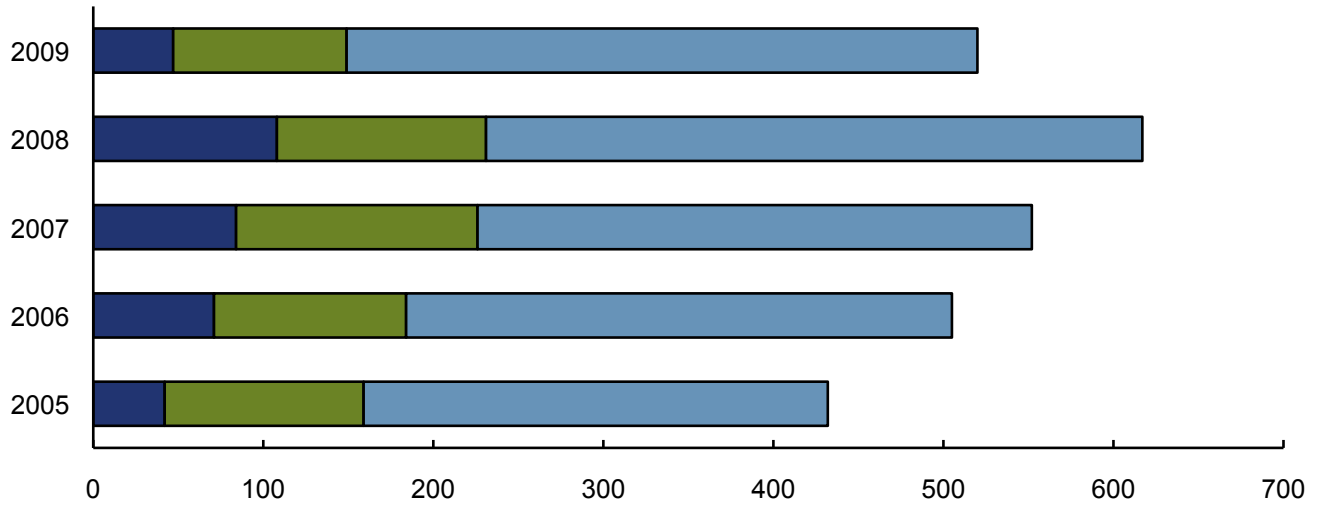
Average Transfer GPA of Applicants, Accepted, and Enrolled



GRADUATE ADMISSIONS: FALL 2005 – 2009

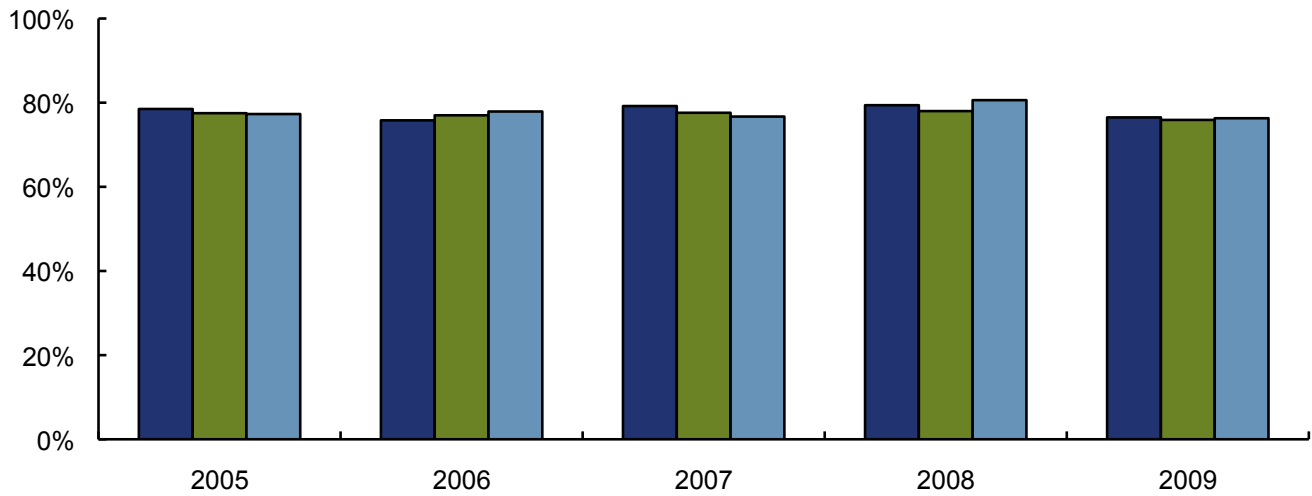
Graduate Applications Fall

■ Not Accepted ■ Accepted ■ Enrolled



Female as a Percent of Graduate Applicants, Accepted, and Enrolled

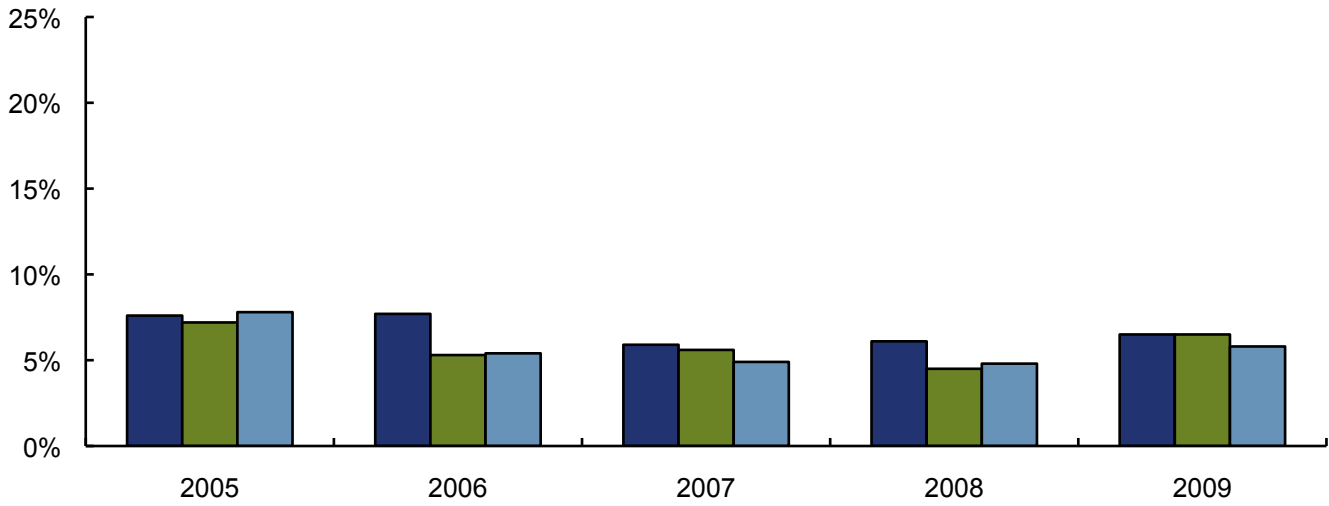
■ Applied ■ Accepted ■ Enrolled



GRADUATE ADMISSIONS: FALL 2005 – 2009

Percent of Graduate Applicants, Accepted, and Enrolled who are Not White

■ Applied ■ Accepted ■ Enrolled



admissions

**Fall Admissions
2005 – 2009
Tables**



FRESHMAN ADMISSIONS: FALL 2005 – 2009

	2005	2006	2007	2008	2009
Applied	4818	4608	6890	6676	5835
Accepted	4314	3865	4118	3656	3514
Enrolled	1226	1136	1088	1151	994
Acceptance Rate	89.5%	83.9%	59.8%	54.8%	60.2%
Yield	28.4%	29.4%	26.4%	31.5%	28.3%

APPLIED	2005	2006	2007	2008	2009
Average HS GPA	2.77	2.81	2.76	2.99	2.80
Average SAT					
Math	470	480	469	469	472
Verbal	470	476	464	464	465
Combined	939	956	933	933	938

ACCEPTED	2005	2006	2007	2008	2009
Average HS GPA	2.86	3.00	3.03	3.03	3.07
Average SAT					
Math	474	491	501	501	510
Verbal	474	486	495	495	501
Combined	948	977	997	995	1011

ENROLLED	2005	2006	2007	2008	2009
Average HS GPA	2.84	2.86	2.91	2.91	2.94
Average SAT					
Math	471	475	484	483	491
Verbal	476	474	481	483	488
Combined	948	950	964	966	979

FRESHMAN ADMISSIONS: FALL 2005 – 2009
GENDER

FEMALE	2005	2006	2007	2008	2009
Applied	3215	2952	4410	4237	3577
Accepted	2927	2568	2675	2366	2206
Enrolled	808	717	654	722	611
Acceptance Rate	91.0%	87.0%	60.7%	55.8%	61.7%
Yield	27.6%	27.9%	24.4%	30.5%	27.7%

MALE	2005	2006	2007	2008	2009
Applied	1601	1656	2480	2439	2258
Accepted	1386	1297	1443	1290	1308
Enrolled	418	419	434	429	383
Acceptance Rate	86.6%	78.3%	58.2%	52.9%	57.9%
Yield	30.2%	32.3%	30.1%	33.3%	29.3%

% FEMALE	2005	2006	2007	2008	2009
Applied	66.8%	64.1%	64.0%	63.5%	61.3%
Accepted	67.9%	66.4%	65.0%	64.7%	62.8%
Enrolled	65.9%	63.1%	60.1%	62.7%	61.5%

Gender counts may not add to totals on previous page due to students who did not identify gender.

FRESHMAN ADMISSIONS: FALL 2005 – 2009
RACE

	2005	2006	2007	2008	2009
Applied					
Non Resident Alien	72	60	73	56	37
Black	447	519	846	971	816
American Indian	14	10	32	28	28
Asian Pacific Islander	190	220	291	281	244
Hispanic	400	446	736	788	704
White	3637	3262	4698	4391	3918
Unknown	58	91	214	161	88
% Non-White*	22.4%	26.8%	28.9%	32.0%	31.4%
Accepted					
Non Resident Alien	62	43	56	40	14
Black	388	308	314	377	288
American Indian	13	6	19	11	15
Asian Pacific Islander	172	192	163	166	142
Hispanic	364	345	356	334	312
White	3266	2895	3103	2634	2703
Unknown	49	76	107	94	40
% Non-White*	22.3%	22.7%	21.5%	25.2%	21.9%
Enrolled					
Non Resident Alien	28	22	19	12	6
Black	85	105	110	112	88
American Indian	2	1	3	2	3
Asian Pacific Islander	43	39	27	51	35
Hispanic	94	102	104	110	82
White	957	845	793	829	771
Unknown	17	22	32	35	9
% Non-White*	19.0%	22.6%	23.5%	24.9%	21.2%

* % Non-White excludes Non-resident Alien Students and students with unknown race.

**NEW FRESHMEN ENROLLED FALL 2005 – 2009
TOP FIFTEEN FEEDER HIGH SCHOOLS AND NUMBER OF STUDENTS ENROLLED**

	2005	2006	2007	2008	2009
PEABODY HIGH SCHOOL	50	48	51	43	46
LYNN CLASSICAL HIGH SCHOOL	32	37	38	44	36
SALEM HIGH SCHOOL	32	44	36	36	32
MALDEN HIGH SCHOOL	23	23	21	34	22
SAINT MARY REGIONAL HIGH SCHOOL			14	21	21
LYNN ENGLISH HIGH SCHOOL	44	27	37	27	20
SAUGUS HIGH SCHOOL	29	18	23	18	19
LAWRENCE HIGH SCHOOL	24				19
MELROSE HIGH SCHOOL		15		14	17
BISHOP FENWICK HIGH SCHOOL	22	17	22		17
REVERE HIGH SCHOOL	18	16	23	16	16
MEDFORD HIGH SCHOOL	27	17			16
WAKEFIELD HIGH SCHOOL	26		14		15
DANVERS HIGH SCHOOL	14	15	15	28	15
WOBURN HIGH SCHOOL					15
GLOUCESTER HIGH SCHOOL	17	18	26	25	14
EVERETT HIGH SCHOOL	23	27	30	24	14
BEVERLY HIGH SCHOOL	19	18	16	23	14
LOWELL HIGH SCHOOL			14	14	14
NORTHEAST METRO TECH HIGH SCHOOL				12	11
METHUEN HIGH SCHOOL		15			11
READING MEMORIAL HIGH SCHOOL		15			11
HAMILTON-WENHAM REGIONAL HIGH SCHOOL					10
POPE JOHN XXIII CENTRAL HIGH SCHOOL	21				9
SOMERVILLE HIGH SCHOOL					9
WHITTIER REGIONAL VOC-TECH HIGH SCHOOL					9
BILLERICA MEMORIAL HIGH SCHOOL					9
JOHN D. O'BRYANT SCHOOL					8
QUINCY HIGH SCHOOL					8
WINTHROP HIGH SCHOOL					8
BURLINGTON HIGH SCHOOL					8
CENTRAL CATHOLIC HIGH SCHOOL					8
NORTH SHORE TECHNICAL HIGH SCHOOL					8
CHELMSFORD HIGH SCHOOL				13	
SWAMPSCOTT HIGH SCHOOL				13	
TRITON REGIONAL HIGH SCHOOL	17		17		

Top 15 Based on number of admitted, enrolled students. High Schools that sent the same numbers of students are counted at the same rank which is why the top 15 may include more than 15 High Schools.

**NEW FRESHMEN ENROLLED FALL 2005 – 2009
MAJORS**

	2005	2006	2007	2008	2009
ART	16	18	32	17	26
ATHLETIC TRAINING	NA	NA	NA	7	26
BIOLOGY	76	60	68	64	71
BUSINESS ADMINISTRATION	181	167	170	171	126
CARTOGRAPHY	4	3	1	1	1
CHEMISTRY	6	9	9	15	8
COMMUNICATIONS	50	45	38	44	44
COMPUTER SCIENCE	13	24	21	21	23
CRIMINAL JUSTICE	98	79	67	90	79
ECONOMICS		2	5	1	1
EDUCATION	120	116	93	87	100
ENGLISH	27	21	17	35	33
GEOGRAPHY	6		1	4	4
GEOLOGICAL SCIENCES	1	3	3	7	4
HISTORY	19	26	11	31	25
LIBERAL STUDIES	15	15	15	9	7
MATH	5	14	8	9	14
MUSIC	15	16	16	15	7
NURSING	92	98	110	91	58
POLITICAL SCIENCE	8	8	7	10	11
PSYCHOLOGY	67	55	56	69	45
SOCIAL WORK	19	21	18	24	24
SOCIOLOGY	11	10	10	5	4
SPANISH	4	4	2	2	3
SPORT AND MOVEMENT SCIENCE	43	59	40	65	33
THEATRE	50	34	35	42	42
UNDECLARED	280	229	235	215	175

TRANSFER ADMISSIONS: FALL 2005 – 2009

	2005	2006	2007	2008	2009
Applied	1348	1402	1514	1554	1499
Accepted	1248	1271	1321	1364	1358
Enrolled	811	780	814	846	852
Acceptance Rate	92.6%	90.7%	87.3%	87.8%	90.6%
Yield	65.0%	61.4%	61.6%	62.0%	62.7%

APPLIED	2005	2006	2007	2008	2009
Avg Transfer GPA	2.85	2.89	2.87	2.88	2.91

ACCEPTED	2005	2006	2007	2008	2009
Avg Transfer GPA	2.93	2.98	3.04	3.02	3.02

ENROLLED	2005	2006	2007	2008	2009
Avg Transfer GPA	2.89	2.97	3.03	2.99	2.98

TRANSFER ADMISSIONS: FALL 2005 – 2009
GENDER

FEMALE	2005	2006	2007	2008	2009
Applied	800	854	943	957	883
Accepted	747	797	844	852	809
Enrolled	476	482	500	516	495
Acceptance Rate	93.4%	93.3%	89.5%	89.0%	91.6%
Yield	63.7%	60.5%	59.2%	60.6%	61.2%

MALE	2005	2006	2007	2008	2009
Applied	546	548	571	597	616
Accepted	500	474	477	512	549
Enrolled	334	298	314	330	357
Acceptance Rate	91.6%	86.5%	83.5%	85.8%	89.1%
Yield	66.8%	62.9%	65.8%	64.5%	65.0%

% FEMALE	2005	2006	2007	2008	2009
Applied	59.4%	60.9%	62.3%	61.6%	58.9%
Accepted	59.9%	62.7%	63.9%	62.5%	59.6%
Enrolled	58.8%	61.8%	61.4%	61.0%	58.1%

Gender counts may not add to totals on previous page due to students who did not identify gender.

TRANSFER ADMISSIONS: FALL 2005 – 2009
RACE

	2005	2006	2007	2008	2009
Applied					
Non Resident Alien	53	55	54	46	43
Black	104	92	139	144	179
American Indian	4	6	5	5	10
Asian Pacific Islander	37	36	39	56	44
Hispanic	58	76	102	95	81
White	1053	1093	1104	1158	1111
Unknown	39	44	71	50	31
% Non-White*	16.2%	16.1%	20.5%	20.6%	22.0%
Accepted					
Non Resident Alien	51	50	47	43	38
Black	95	76	109	115	146
American Indian	4	6	4	5	8
Asian Pacific Islander	36	35	28	50	42
Hispanic	51	69	82	86	67
White	974	993	985	1019	1029
Unknown	37	42	66	46	28
% Non-White*	16.0%	15.8%	18.5%	20.1%	20.4%
Enrolled					
Non Resident Alien	30	37	35	34	33
Black	59	43	66	71	80
American Indian	3	4	3	4	7
Asian Pacific Islander	23	25	15	30	27
Hispanic	28	48	55	55	38
White	640	596	603	632	651
Unknown	28	27	37	20	16
% Non-White*	15.0%	16.8%	18.7%	20.2%	18.9%

* % Non-White excludes Non-resident Alien Students and students with unknown race.

NEW TRANSFERS ENROLLED FALL 2005 – 2009
TOP FIFTEEN FEEDER COLLEGES AND # OF STUDENTS ENROLLED

	2005	2006	2007	2008	2009
NORTH SHORE CMTY COLLEGE	201	179	189	228	192
MIDDLESEX CMTY COLLEGE	34	53	56	60	58
BUNKER HILL CMTY COLLEGE	37	30	33	46	41
NORTHERN ESSEX CMTY COLLEGE	35	45	43	39	38
MARIAN COURT COLLEGE	21	16	18	17	31
UNIV MASS DARTMOUTH		13			22
UNIV MASS LOWELL	10	15	15	13	19
UNIV MASS AMHERST	19	16	15		14
UNIV MASS BOSTON	13	11		14	13
MASSASOIT CMTY COLLEGE					12
UNIVERSITY OF NEW HAMPSHIRE					12
QUINCY COLLEGE	10	16	15	12	10
CAPE COD CMTY COLLEGE					9
WESTFIELD STATE COLLEGE				11	9
MASS COLLEGE OF LIBERAL ARTS					8
SUFFOLK UNIVERSITY			12	12	8
MASS BAY CMTY COLLEGE	11	11	14	12	8
BRIDGEWATER STATE COLLEGE	10			9	8
NORTHEASTERN UNIVERSITY	13				7
ENDICOTT COLLEGE					7
CURRY COLLEGE					6
GORDON COLLEGE					6
ROXBURY COMMUNITY COLLEGE					6
MERRIMACK COLLEGE		11			
# of Enrolling Transfers from Top Fifteen	414	416	410	473	544
% of Total Enrolled Transfers from Top Fifteen	51%	53%	50%	56%	64%
Total Count of Feeder Colleges	151	161	170	181	174

Top 15 based on number of admitted, enrolled students. Colleges that sent the same numbers of students are counted at the same rank which is why the top 15 may include more than 15 colleges.

**NEW TRANSFERS ENROLLED FALL 2005 – 2009
MAJORS**

	2005	2006	2007	2008	2009
ART	19	19	22	20	14
ATHLETIC TRAINING	NA	NA	NA	5	10
BIOLOGY	49	44	47	43	50
BUSINESS ADMINISTRATION	168	156	142	187	178
CARTOGRAPHY			1		
CHEMISTRY	5	5	9	11	8
COMMUNICATIONS	43	33	27	34	33
COMPUTER SCIENCE	12	10	8	15	10
CRIMINAL JUSTICE	72	70	74	71	85
ECONOMICS	2	5	4	3	7
EDUCATION	78	95	77	87	76
ENGLISH	14	22	28	21	20
FIRE SCIENCE	9	6	6	3	6
GEOGRAPHY	7	4	5	2	9
GEOLOGICAL SCIENCES	4	1	3	5	7
HISTORY	18	26	21	23	22
LIBERAL STUDIES	6	7	25	23	19
MATH	11	5	6	4	12
MUSIC	4	4	6	2	5
NURSING	84	65	70	75	76
OCCUPATIONAL THERAPY	5	4	11	12	9
POLITICAL SCIENCE	7	11	7	13	6
PSYCHOLOGY	52	44	41	40	39
SOCIAL WORK	23	26	31	29	26
SOCIOLOGY	15	19	13	9	11
SPANISH	5	6	3	4	7
SPORT AND MOVEMENT SCIENCE	28	29	35	38	30
THEATRE	8	11	18	10	15
UNDECLARED	63	53	74	57	62

GRADUATE ADMISSIONS: FALL 2005 – 2009

	2005	2006	2007	2008	2009
Applied	432	505	552	617	520
Accepted	390	434	468	509	473
Enrolled	273	321	326	386	371
Acceptance Rate	90.3%	85.9%	84.8%	82.5%	91.0%
Yield	70.7%	74.0%	69.7%	75.8%	78.4%

GRADUATE ADMISSIONS: FALL 2005 – 2009 GENDER

FEMALE	2005	2006	2007	2008	2009
Applied	336	383	437	490	398
Accepted	299	334	363	397	359
Enrolled	208	250	250	311	283
Acceptance Rate	89.0%	87.2%	83.1%	81.0%	90.2%
Yield	69.6%	74.9%	68.9%	78.3%	78.8%

MALE	2005	2006	2007	2008	2009
Applied	92	122	115	127	122
Accepted	87	100	105	112	114
Enrolled	61	71	76	75	88
Acceptance Rate	94.6%	82.0%	91.3%	88.2%	93.4%
Yield	70.1%	71.0%	72.4%	67.0%	77.2%

% FEMALE	2005	2006	2007	2008	2009
Applied	78.5%	75.8%	79.2%	79.4%	76.5%
Accepted	77.5%	77.0%	77.6%	78.0%	75.9%
Enrolled	77.3%	77.9%	76.7%	80.6%	76.3%

Gender counts may not add to totals on previous page due to students who did not identify gender.

GRADUATE ADMISSIONS: FALL 2005 – 2009
RACE

	2005	2006	2007	2008	2009
Applied					
Non Resident Alien	10	21	13	20	12
Black	11	10	10	13	12
American Indian		1	1		1
Asian Pacific Islander	4	6	3	3	9
Hispanic	14	17	15	17	11
White	355	410	462	506	403
Unknown	38	40	48	58	72
% Non-White*	7.6%	7.7%	5.9%	6.1%	7.6%
Accepted					
Non Resident Alien	9	17	13	16	12
Black	8	6	5	9	10
American Indian		1	1		
Asian Pacific Islander	4	4	3	2	7
Hispanic	13	9	14	9	11
White	320	357	389	422	367
Unknown	36	40	43	51	66
% Non-White*	7.2%	5.3%	5.6%	4.5%	7.1%
Enrolled					
Non Resident Alien	5	12	9	15	11
Black	6	4		7	10
American Indian		1	1		
Asian Pacific Islander	2	4	3	1	5
Hispanic	11	6	10	8	5
White	225	261	271	314	294
Unknown	24	33	32	41	46
% Non-White*	7.8%	5.4%	4.9%	4.8%	6.4%

* % Non-White excludes Non-resident Alien Students and students with unknown race.

NEW GRADUATE STUDENTS ENROLLED: FALL 2005 – 2009
GRADUATE PROGRAMS

	2005	2006	2007	2008	2009
ART - MAT	2	2	1	5	7
BIOLOGY - MAT	1	1			
BUSINESS - MBA	12	11	11	20	11
CHEMISTRY - MAT	1			1	
COUNSELING & PSYCHOLOGICAL SERVICES - MS	13	17	12	21	18
CRIMINAL JUSTICE - MS			6	3	10
EARLY CHILDHOOD EDUCATION - MED	8	3	4	11	9
EDUCATIONAL LEADERSHIP - MED	3	2	1	2	1
ELEMENTARY EDUCATION - MED	25	15	20	18	26
ENGLISH - MA	4	5	11	8	10
ENGLISH - MA/MAT	2	2	1	2	1
ENGLISH - MAT	5	4	2	10	2
ENGLISH AS A SECOND LANGUAGE - MAT	1	2	5	12	15
FIELD BASED - MED		33		1	
GENERAL SCIENCE - MAT		2			
GEO-INFORMATION SCIENCE - MS	1	2	1	4	4
HIGHER EDUCATION IN STUDENT AFFAIRS - MED	3	15	15	10	12
HISTORY - MA	11	4	9	10	8
HISTORY - MAT			6	8	9
INDUSTRIAL/ORGANIZATIONAL PSYCHOLOGY - MS	NA	NA	NA	3	3
LIBRARY MEDIA STUDIES - MED	6	3	22	10	10
MATHEMATICS - MAT	4	3	2	8	10
MATHEMATICS - MS		2	3	3	6
MIDDLE SCHOOL - MED	6	6	7	8	8
MSN/MBA	1				
NURSING - MSN	11	8	5	8	19
OCCUPATIONAL THERAPY - BS/MS		4	11	5	9
PHYSICAL EDUCATION - MED	6	4	4	3	4
READING - MED	13	9	7	24	1
SCHOOL COUNSELING -MED	12	6	6	9	15
SECONDARY EDUCATION - MED	8	10	3	2	5
SOCIAL WORK - MSW	65	83	77	74	88
SPANISH - MAT	2	3	8	4	3
SPECIAL EDUCATION - MED	20	25	31	33	11
TECHNOLOGY IN EDUCATION - MED	2	2	3	2	1
CAGS - EDUCATION	10	4	10	19	12
ADVANCED PROFESSIONAL STUDIES - COUNSELING	1	1	2	4	2
CERTIFICATES/LICENSURE PROGRAMS	14	28	20	21	21

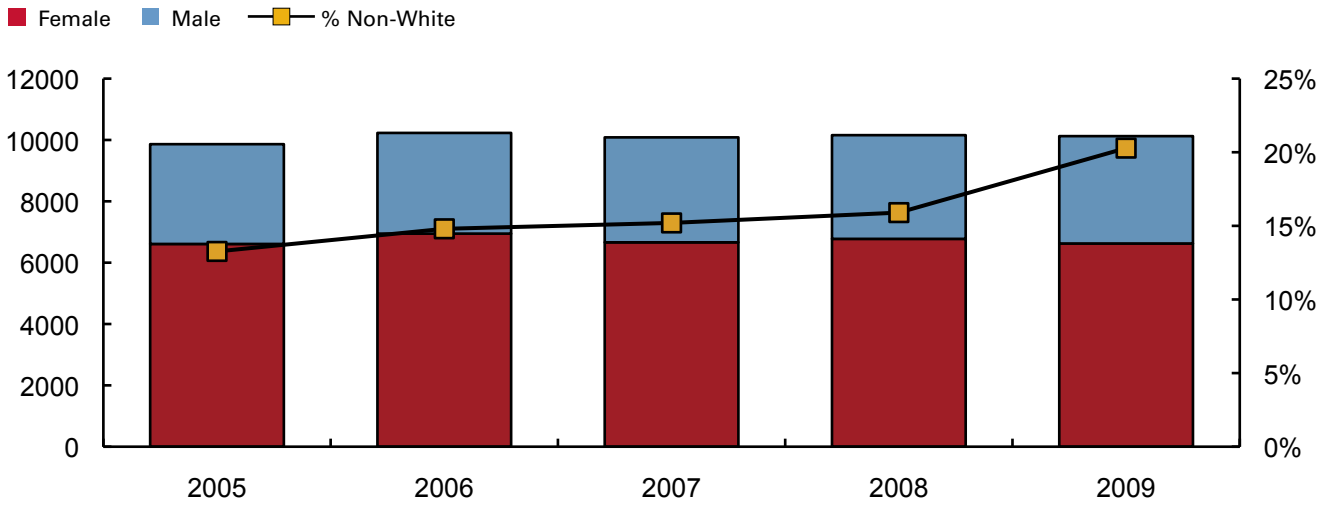
enrollment

**Enrollment
at a Glance
2005 – 2009**

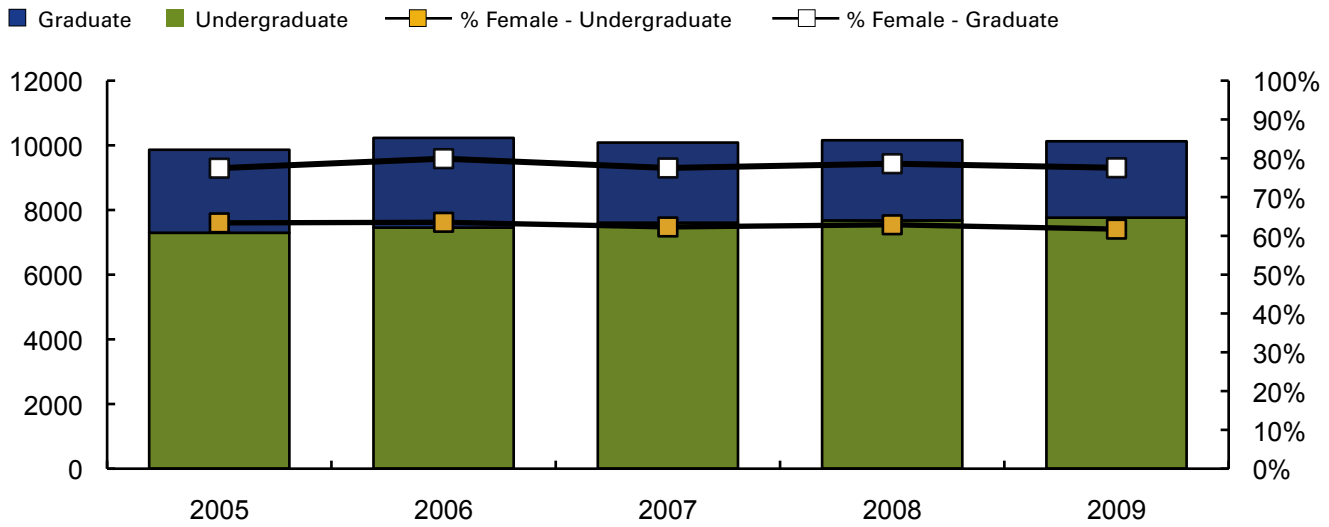


ENROLLMENT: FALL 2005 – 2009

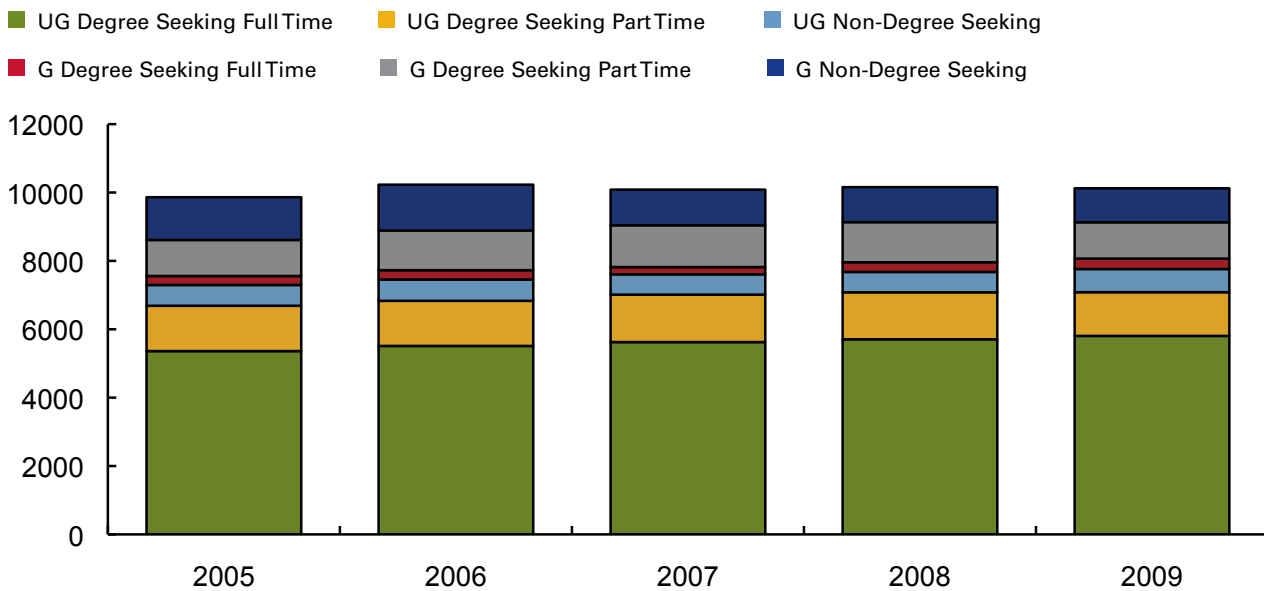
All College Headcount Fall Enrollment Demographics



All College Headcount with Percent Female by Undergraduate/Graduate

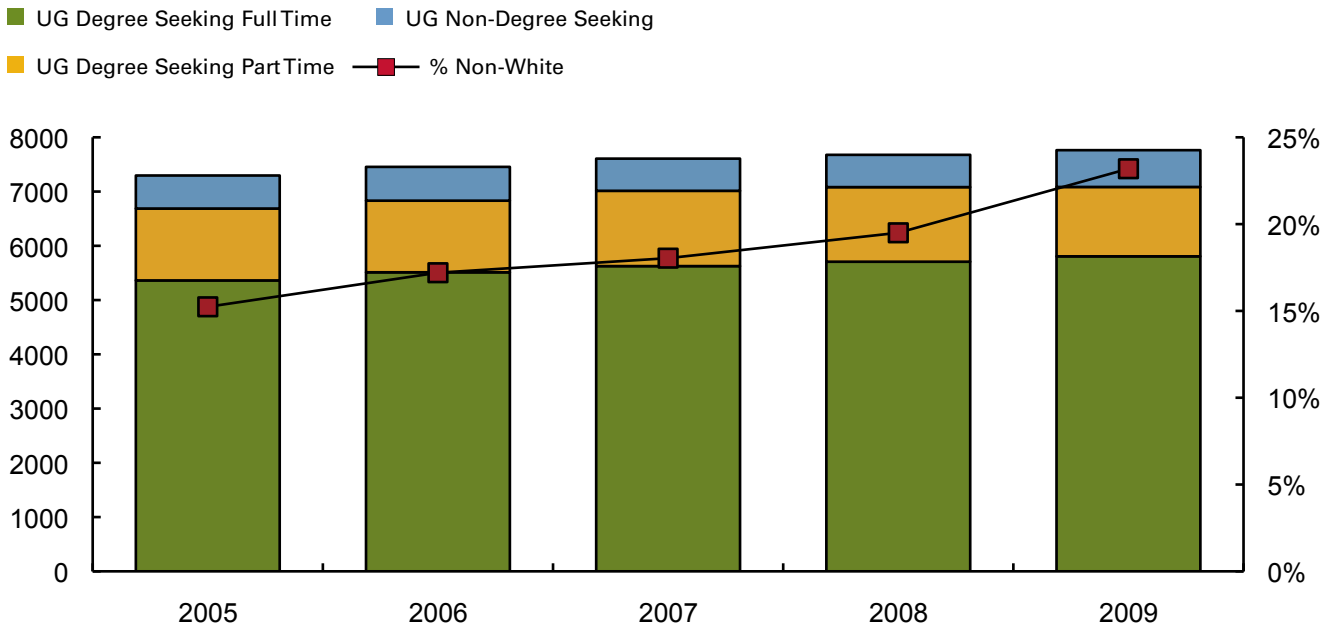


All College Headcount by Level and Attendance Status

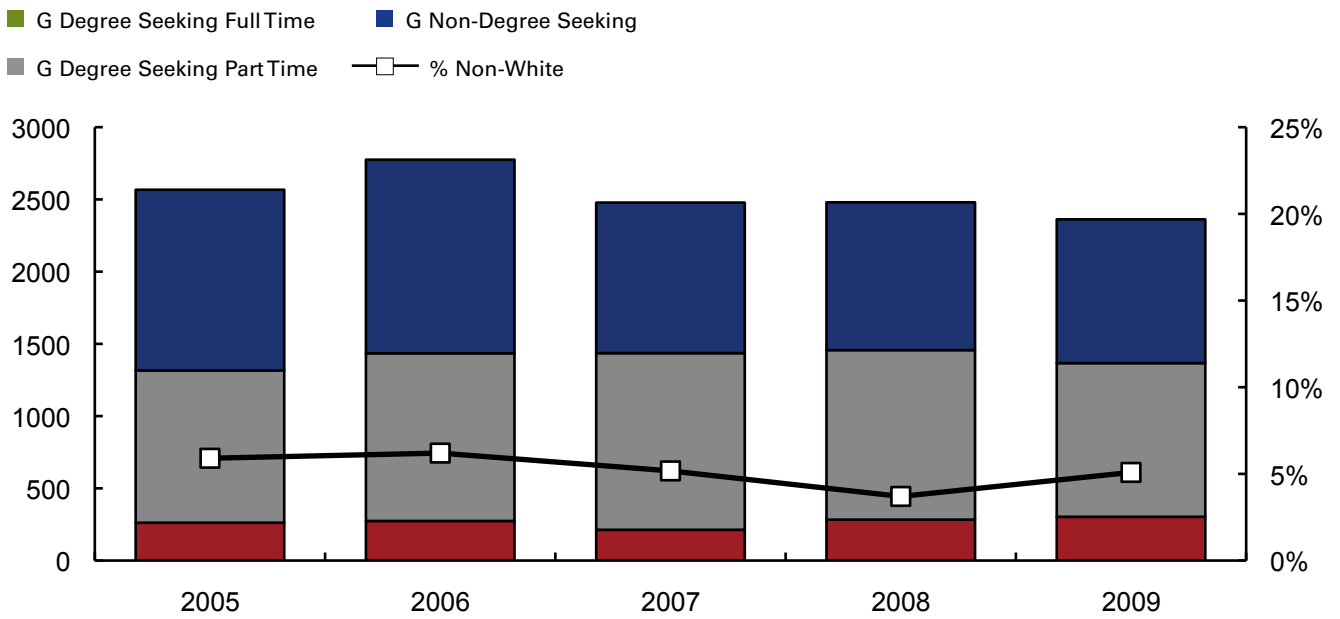


ENROLLMENT: FALL 2005 — 2009

Undergraduate Headcount by Attendance Status and Percent Non-White



Graduate Headcount by Attendance Status and Percent Non-White



LEFT BLANK INTENTIONALLY

enrollment

**Enrollment
2005 – 2009
Tables**



**ALL COLLEGE FALL HEADCOUNT 2005 – 2009
BY GENDER AND RACE**

	2005	2006	2007	2008	2009
Female					
Non Resident Alien	214	214	191	196	176
Black	282	353	381	417	451
American Indian	16	23	22	15	19
Asian Pacific Islander	150	167	139	154	161
Hispanic	306	348	351	384	388
White	4839	4917	5002	5156	4815
Unknown	803	925	577	454	615
Female Total	6610	6947	6663	6776	6625
% Non-White*	13.5%	15.3%	15.1%	15.8%	17.5%
% Female	67.0%	67.9%	66.1%	66.7%	65.4%
Male					
Non Resident Alien	166	175	175	174	163
Black	171	185	215	225	238
American Indian	13	11	8	9	10
Asian Pacific Islander	52	54	69	80	89
Hispanic	126	140	175	173	182
White	2459	2468	2584	2548	2560
Unknown	266	250	196	172	258
Male Total	3253	3283	3422	3381	3500
% Non-White*	12.8%	13.6%	15.3%	16.0%	16.9%
% Male	32.8%	32.1%	33.9%	33.3%	34.6%
Total					
Non Resident Alien	380	389	366	370	339
Black	453	538	596	642	689
American Indian	29	34	30	24	29
Asian Pacific Islander	202	221	208	234	250
Hispanic	432	488	526	557	570
White	7298	7385	7586	7704	7375
Unknown	1069	1175	773	626	873
Total	9863	10230	10085	10157	10125
% Non-White*	13.3%	14.8%	15.2%	15.9%	17.3%

* % Non-White excludes Non-resident Alien Students and students with unknown race.

**FALL UNDERGRADUATE HEADCOUNT 2005 – 2009
BY GENDER AND RACE**

	2005	2006	2007	2008	2009
Female					
Non Resident Alien	178	177	160	154	131
Black	254	320	354	397	431
American Indian	14	18	18	13	17
Asian Pacific Islander	137	153	125	146	147
Hispanic	262	303	314	354	358
White	3558	3506	3568	3594	3521
Unknown	219	254	203	168	189
Female Total	4622	4731	4742	4826	4794
% Non-White*	15.8%	18.5%	18.5%	20.2%	21.3%
% Female	63.3%	63.5%	62.3%	62.9%	61.8%
Male					
Non Resident Alien	150	159	159	155	145
Black	164	177	210	213	226
American Indian	13	9	8	9	10
Asian Pacific Islander	46	49	62	77	84
Hispanic	121	133	167	171	176
White	2066	2077	2148	2118	2193
Unknown	114	120	111	108	135
Male Total	2674	2724	2865	2851	2969
% Non-White*	14.3%	15.1%	17.2%	18.2%	18.4%
% Male	36.7%	36.5%	37.7%	37.1%	38.2%
Total					
Non Resident Alien	328	336	319	309	276
Black	418	497	564	610	657
American Indian	27	27	26	22	27
Asian Pacific Islander	183	202	187	223	231
Hispanic	383	436	481	525	534
White	5624	5583	5716	5712	5714
Unknown	333	374	314	276	324
Total	7296	7455	7607	7677	7763
% Non-White*	15.2%	17.2%	18.0%	19.5%	20.2%

* % Non-White excludes Non-resident Alien Students and students with unknown race.

FALL UNDERGRADUATE HEADCOUNT 2005 – 2009
TOTAL DEGREE SEEKING

	2005	2006	2007	2008	2009
Female					
Non Resident Alien	148	147	142	126	100
Black	250	311	343	389	417
American Indian	14	17	18	13	17
Asian Pacific Islander	132	151	122	141	140
Hispanic	252	296	307	346	343
White	3342	3287	3328	3335	3284
Unknown	136	162	148	131	100
Female Total	4274	4371	4408	4481	4401
% Non-White*	16.2%	19.1%	19.2%	21.0%	21.8%
% Female	63.9%	64.0%	62.8%	63.3%	62.1%
% of Female Undergraduates	92.5%	92.4%	93.0%	92.9%	91.8%
Male					
Non Resident Alien	126	131	134	127	113
Black	159	169	199	202	216
American Indian	13	8	7	8	10
Asian Pacific Islander	45	48	61	75	78
Hispanic	114	128	159	165	171
White	1897	1909	1960	1939	2029
Unknown	59	68	86	85	67
Male Total	2413	2461	2606	2601	2684
% Non-White*	14.9%	15.6%	17.9%	18.8%	19.0%
% Male	36.1%	36.0%	37.2%	36.7%	37.9%
% of Male Undergraduates	90.2%	90.3%	91.0%	91.2%	90.4%
Total					
Non Resident Alien	274	278	276	253	213
Black	409	480	542	591	633
American Indian	27	25	25	21	27
Asian Pacific Islander	177	199	183	216	218
Hispanic	366	424	466	511	514
White	5239	5196	5288	5274	5313
Unknown	195	230	234	216	167
Total	6687	6832	7014	7082	7085
% Non-White*	15.7%	17.8%	18.7%	20.2%	20.8%
% of Undergraduate Headcount	91.7%	91.6%	92.2%	92.2%	91.3%

* % Non-White excludes Non-resident Alien Students and students with unknown race.

FALL UNDERGRADUATE HEADCOUNT 2005 – 2009
FULL TIME DEGREE SEEKING

	2005	2006	2007	2008	2009
Female					
Non Resident Alien	117	122	107	93	77
Black	206	248	253	287	317
American Indian	12	9	8	8	9
Asian Pacific Islander	109	118	96	106	115
Hispanic	201	237	247	283	281
White	2658	2615	2667	2657	2672
Unknown	78	103	102	95	77
Female Total	3381	3452	3480	3529	3548
% Non-White*	16.6%	19.0%	18.5%	20.5%	21.3%
% Female	63.1%	62.6%	61.9%	61.8%	61.1%
% of Female Degree Seeking Undergraduates	79.1%	79.0%	78.9%	78.8%	80.6%
% of Female Undergraduates	73.2%	73.0%	73.4%	73.1%	74.0%
Male					
Non Resident Alien	111	116	113	107	98
Black	128	143	154	155	170
American Indian	8	5	4	6	9
Asian Pacific Islander	39	39	50	62	72
Hispanic	94	120	135	144	150
White	1557	1590	1627	1632	1705
Unknown	44	47	63	72	54
Male Total	1981	2060	2146	2178	2258
% Non-White*	14.7%	16.2%	17.4%	18.4%	19.0%
% Male	36.9%	37.4%	38.1%	38.2%	38.9%
% of Male Degree Seeking Undergraduates	82.1%	83.7%	82.3%	83.7%	84.1%
% of Male Undergraduates	74.1%	75.6%	74.9%	76.4%	76.1%
Total					
Non Resident Alien	228	238	220	200	175
Black	334	391	407	442	487
American Indian	20	14	12	14	18
Asian Pacific Islander	148	157	146	168	187
Hispanic	295	357	382	427	431
White	4215	4205	4294	4289	4377
Unknown	122	150	165	167	131
Total	5362	5512	5626	5707	5806
% Non-White*	15.9%	17.9%	18.1%	19.7%	20.4%
% of Degree Seeking Undergraduates	80.2%	80.7%	80.2%	80.6%	81.9%
% of Undergraduate Headcount	73.5%	73.9%	74.0%	74.3%	74.8%

* % Non-White excludes Non-resident Alien Students and students with unknown race.

FALL UNDERGRADUATE HEADCOUNT 2005 – 2009
PART TIME DEGREE SEEKING

	2005	2006	2007	2008	2009
Female					
Non Resident Alien	31	25	35	33	23
Black	44	63	90	102	100
American Indian	2	8	10	5	8
Asian Pacific Islander	23	33	26	35	25
Hispanic	51	59	60	63	62
White	684	672	661	678	612
Unknown	58	59	46	36	23
Female Total	893	919	928	952	853
% Non-White*	14.9%	19.5%	22.0%	23.2%	24.2%
% Female	67.4%	69.6%	66.9%	69.2%	66.7%
% of Female Degree Seeking Undergraduates	20.9%	21.0%	21.1%	21.2%	19.4%
% of Female Undergraduates	19.3%	19.4%	19.6%	19.7%	17.8%
Male					
Non Resident Alien	15	15	21	20	15
Black	31	26	45	47	46
American Indian	5	3	3	2	1
Asian Pacific Islander	6	9	11	13	6
Hispanic	20	8	24	21	21
White	340	319	333	307	324
Unknown	15	21	23	13	13
Male Total	432	401	460	423	426
% Non-White*	15.4%	12.6%	20.0%	21.3%	18.6%
% Male	32.6%	30.4%	33.1%	30.8%	33.3%
% of Male Degree Seeking Undergraduates	17.9%	16.3%	17.7%	16.3%	15.9%
% of Male Undergraduates	16.2%	14.7%	16.1%	14.8%	14.3%
Total					
Non Resident Alien	46	40	56	53	38
Black	75	89	135	149	146
American Indian	7	11	13	7	9
Asian Pacific Islander	29	42	37	48	31
Hispanic	71	67	84	84	83
White	1024	991	994	985	936
Unknown	73	80	69	49	36
Total	1325	1320	1388	1375	1279
% Non-White*	15.1%	17.4%	21.3%	22.6%	22.3%
% of Degree Seeking Undergraduates	19.8%	19.3%	19.8%	19.4%	18.1%
% of Undergraduate Headcount	18.2%	17.7%	18.2%	17.9%	16.5%

* % Non-White excludes Non-resident Alien Students and students with unknown race.

FALL UNDERGRADUATE HEADCOUNT 2005 – 2009
NON-DEGREE SEEKING

	2005	2006	2007	2008	2009
Female					
Non Resident Alien	30	30	18	28	31
Black	4	9	11	8	14
American Indian	0	1	0	0	0
Asian Pacific Islander	5	2	3	5	7
Hispanic	10	7	7	8	15
White	216	219	240	259	237
Unknown	83	92	55	37	89
Female Total	348	360	334	345	393
% Non-White*	8.1%	8.0%	8.0%	7.5%	13.2%
% Female	57.1%	57.8%	56.3%	58.0%	58.0%
% of Female Undergraduates	7.5%	7.6%	7.0%	7.1%	8.2%
Male					
Non Resident Alien	24	28	25	28	32
Black	5	8	11	11	10
American Indian	0	1	1	1	0
Asian Pacific Islander	1	1	1	2	6
Hispanic	7	5	8	6	5
White	169	168	188	179	164
Unknown	55	52	25	23	68
Male Total	261	263	259	250	285
% Non-White*	7.1%	8.2%	10.0%	10.1%	11.4%
% Male	42.9%	42.2%	43.7%	42.0%	42.0%
% of Male Undergraduates	9.8%	9.7%	9.0%	8.8%	9.6%
Total					
Non Resident Alien	54	58	43	56	63
Black	9	17	22	19	24
American Indian	0	2	1	1	0
Asian Pacific Islander	6	3	4	7	13
Hispanic	17	12	15	14	20
White	385	387	428	438	401
Unknown	138	144	80	60	157
Total	609	623	593	595	678
% Non-White*	7.7%	8.1%	8.9%	8.6%	12.4%
% of Undergraduate Headcount	8.3%	8.4%	7.8%	7.8%	8.7%

* % Non-White excludes Non-resident Alien Students and students with unknown race.

**FALL GRADUATE HEADCOUNT 2005 – 2009
BY GENDER AND RACE**

	2005	2006	2007	2008	2009
Female					
Non Resident Alien	36	37	31	42	45
Black	28	33	27	20	20
American Indian	2	5	4	2	2
Asian Pacific Islander	13	14	14	8	15
Hispanic	44	45	37	30	29
White	1281	1411	1434	1562	1294
Unknown	584	671	374	286	426
Female Total	1988	2216	1921	1950	1831
% Non-White*	6.4%	6.4%	5.4%	3.7%	4.9%
% Female	77.4%	79.9%	77.5%	78.6%	77.5%
Male					
Non Resident Alien	16	16	16	19	18
Black	7	8	5	12	12
American Indian	0	2	0	0	0
Asian Pacific Islander	6	5	7	3	5
Hispanic	5	7	8	2	6
White	393	391	436	430	367
Unknown	152	130	85	64	123
Male Total	579	559	557	530	531
% Non-White*	4.4%	5.3%	4.4%	3.8%	5.9%
% Male	22.6%	20.1%	22.5%	21.4%	22.5%
Total					
Non Resident Alien	52	53	47	61	63
Black	35	41	32	32	32
American Indian	2	7	4	2	2
Asian Pacific Islander	19	19	21	11	20
Hispanic	49	52	45	32	35
White	1674	1802	1870	1992	1661
Unknown	736	801	459	350	549
Total	2567	2775	2478	2480	2362
% Non-White*	5.9%	6.2%	5.2%	3.7%	5.1%

* % Non-White excludes Non-resident Alien Students and students with unknown race.

FALL GRADUATE HEADCOUNT 2005 – 2009
TOTAL DEGREE SEEKING

	2005	2006	2007	2008	2009
Female					
Non Resident Alien	23	26	22	29	24
Black	20	23	19	18	15
American Indian	2	3	2	1	1
Asian Pacific Islander	9	12	10	6	8
Hispanic	28	28	29	26	25
White	807	899	941	965	908
Unknown	122	142	85	93	89
Female Total	1011	1133	1108	1138	1070
% Non-White*	6.8%	6.8%	6.0%	5.0%	5.1%
% Female	76.8%	79.0%	77.2%	78.1%	78.3%
% of Female Graduate Students	50.9%	51.1%	57.7%	58.4%	58.4%
Male					
Non Resident Alien	10	12	9	11	9
Black	6	3	3	4	8
American Indian	0	0	0	0	0
Asian Pacific Islander	4	4	4	2	1
Hispanic	3	5	5	2	1
White	236	236	278	271	244
Unknown	46	42	29	29	34
Male Total	305	302	328	319	297
% Non-White*	5.2%	4.8%	4.1%	2.9%	3.9%
% Male	23.2%	21.0%	22.8%	21.9%	21.7%
% of Male Graduate Students	52.7%	54.0%	58.9%	60.2%	55.9%
Total					
Non Resident Alien	33	38	31	40	33
Black	26	26	22	22	23
American Indian	2	3	2	1	1
Asian Pacific Islander	13	16	14	8	9
Hispanic	31	33	34	28	26
White	1043	1135	1219	1236	1152
Unknown	168	184	114	122	123
Total	1316	1435	1436	1457	1367
% Non-White*	6.5%	6.4%	5.6%	4.6%	4.9%
% of Graduate Headcount	51.3%	51.7%	57.9%	58.8%	57.9%

* % Non-White excludes Non-resident Alien Students and students with unknown race.

FALL GRADUATE HEADCOUNT 2005 – 2009
FULL TIME DEGREE SEEKING

	2005	2006	2007	2008	2009
Female					
Non Resident Alien	18	18	12	17	14
Black	5	12	4	5	4
American Indian	0	1	1	1	0
Asian Pacific Islander	4	2	2	1	4
Hispanic	8	4	6	4	5
White	151	160	134	173	193
Unknown	18	28	7	15	19
Female Total	204	225	166	216	239
% Non-White*	10.1%	10.6%	8.8%	6.0%	6.3%
% Female	77.9%	82.1%	77.9%	76.3%	78.9%
% of Female Degree Seeking					
Graduate Students	20.2%	19.9%	15.0%	19.0%	22.3%
% of Female Graduate Students	10.3%	10.2%	8.6%	11.1%	13.1%
Male					
Non Resident Alien	5	8	4	5	5
Black	3	2	1	1	2
American Indian	0	0	0	0	0
Asian Pacific Islander	2	2	0	1	1
Hispanic	0	0	0	1	1
White	39	32	39	51	48
Unknown	9	5	3	8	7
Male Total	58	49	47	67	64
% Non-White*	11.4%	11.1%	2.5%	5.6%	7.7%
% Male	22.1%	17.9%	22.1%	23.7%	21.1%
% of Male Degree Seeking					
Graduate Students	19.0%	16.2%	14.3%	21.0%	21.5%
% of Male Graduate Students	10.0%	8.8%	8.4%	12.6%	12.1%
Total					
Non Resident Alien	23	26	16	22	19
Black	8	14	5	6	6
American Indian	0	1	1	1	0
Asian Pacific Islander	6	4	2	2	5
Hispanic	8	4	6	5	6
White	190	192	173	224	241
Unknown	27	33	10	23	26
Total	262	274	213	283	303
% Non-White*	10.4%	10.7%	7.5%	5.9%	6.6%
% of Degree Seeking					
Graduate Students	19.9%	19.1%	14.8%	19.4%	22.2%
% of Graduate Headcount	10.2%	9.9%	8.6%	11.4%	12.8%

* % Non-White excludes Non-resident Alien Students and students with unknown race.

FALL GRADUATE HEADCOUNT 2005 – 2009
PART TIME DEGREE SEEKING

	2005	2006	2007	2008	2009
Female					
Non Resident Alien	5	8	10	12	10
Black	15	11	15	13	11
American Indian	2	2	1	0	1
Asian Pacific Islander	5	10	8	5	4
Hispanic	20	24	23	22	20
White	656	739	807	792	715
Unknown	104	114	78	78	70
Female Total	807	908	942	922	831
% Non-White*	6.0%	6.0%	5.5%	4.8%	4.8%
% Female	76.6%	78.2%	77.0%	78.5%	78.1%
% of Female Degree Seeking Graduate Students	79.8%	80.1%	85.0%	81.0%	77.7%
% of Female Graduate Students	40.6%	41.0%	49.0%	47.3%	45.5%
Male					
Non Resident Alien	5	4	5	6	4
Black	3	1	2	3	6
American Indian	0	0	0	0	0
Asian Pacific Islander	2	2	4	1	0
Hispanic	3	5	5	1	0
White	197	204	239	220	196
Unknown	37	37	26	21	27
Male Total	247	253	281	252	233
% Non-White*	3.9%	3.8%	4.4%	2.2%	3.0%
% Male	23.4%	21.8%	23.0%	21.5%	21.9%
% of Male Degree Seeking Graduate Students	81.0%	83.8%	85.7%	79.0%	78.5%
% of Male Graduate Students	42.7%	45.3%	50.4%	47.5%	43.9%
Total					
Non Resident Alien	10	12	15	18	14
Black	18	12	17	16	17
American Indian	2	2	1	0	1
Asian Pacific Islander	7	12	12	6	4
Hispanic	23	29	28	23	20
White	853	943	1046	1012	911
Unknown	141	151	104	99	97
Total	1054	1161	1223	1174	1064
% Non-White*	5.5%	5.5%	5.3%	4.3%	4.4%
% of Degree Seeking Graduate Students	80.1%	80.9%	85.2%	80.6%	77.8%
% of Graduate Headcount	41.1%	41.8%	49.4%	47.3%	45.0%

* % Non-White excludes Non-resident Alien Students and students with unknown race.

FALL GRADUATE HEADCOUNT 2005 – 2009
NON-DEGREE SEEKING

	2005	2006	2007	2008	2009
Female					
Non Resident Alien	3	11	9	13	21
Black	8	10	8	2	5
American Indian	0	2	2	1	1
Asian Pacific Islander	4	2	4	2	7
Hispanic	16	17	8	4	4
White	474	512	493	597	386
Unknown	462	529	289	193	337
Female Total	977	1083	813	812	761
% Non-White*	5.6%	5.7%	4.3%	1.5%	4.2%
% Female	78.1%	80.8%	78.0%	79.4%	76.5%
% of Female Graduate Students	49.1%	48.9%	42.3%	41.6%	41.6%
Male					
Non Resident Alien	6	4	7	8	9
Black	1	5	2	8	4
American Indian	0	2	0	0	0
Asian Pacific Islander	2	1	3	1	4
Hispanic	2	2	3	0	5
White	157	155	158	159	123
Unknown	106	88	56	35	89
Male Total	274	257	229	211	234
% Non-White*	3.1%	6.1%	4.8%	5.4%	9.6%
% Male	21.9%	19.2%	22.0%	20.6%	23.5%
% of Male Graduate Students	47.3%	46.0%	41.1%	39.8%	44.1%
Total					
Non Resident Alien	19	15	16	21	30
Black	9	15	10	10	9
American Indian	0	4	2	1	1
Asian Pacific Islander	6	3	7	3	11
Hispanic	18	19	11	4	9
White	631	667	651	756	509
Unknown	568	617	345	228	426
Total	1251	1340	1042	1023	995
% Non-White*	5.0%	5.8%	4.4%	2.3%	5.6%
% of Graduate Headcount	48.7%	48.3%	42.1%	41.3%	42.1%

* % Non-White excludes Non-resident Alien Students and students with unknown race.

ANNUAL ENROLLMENT FY2005 – 2009

	FY2005	FY2006	FY2007	FY2008	FY2009
Headcount					
Undergraduate	8723	9073	9250	9321	9620
Graduate	6658	6934	6498	6424	6141
Both*	41	46	75	81	69
Headcount Total	15422	16053	15823	15826	15830
FTE					
Undergraduate	5887	6286	6544	6561	6783
Graduate	1786	1909	1919	1931	1782
FTE Total	7673	8195	8463	8492	8565

**FALL UNDERGRADUATE HEADCOUNT 2005 – 2009
BY MAJOR**

	2005	2006	2007	2008	2009
ART	191	180	192	188	187
ATHLETIC TRAINING	NA	NA	NA	56	93
BIOLOGY	317	325	353	368	388
BUSINESS ADMINISTRATION	1249	1282	1301	1338	1358
CARTOGRAPHY	18	20	18	12	8
CHEMISTRY	48	57	57	62	66
COMMUNICATIONS	310	320	322	348	311
COMPUTER SCIENCE	99	94	89	94	107
CRIMINAL JUSTICE	492	509	529	540	554
ECONOMICS	16	21	33	32	43
EDUCATION	791	752	749	676	676
ENGLISH	217	213	242	271	282
FIRE SCIENCE	31	37	37	28	27
GENERAL/LIBERAL STUDIES	59	85	112	124	80
GEOGRAPHY	93	82	78	88	87
GEOLOGICAL SCIENCES	24	34	49	69	73
HISTORY	217	255	235	253	276
MATH	73	69	56	63	72
MUSIC	49	66	77	75	65
NURSING	714	808	881	898	866
OCCUPATIONAL THERAPY	29	22	28	38	29
POLITICAL SCIENCE	73	73	74	84	80
PSYCHOLOGY	484	453	468	458	447
SOCIAL WORK	143	174	170	203	197
SOCIOLOGY	183	179	185	170	124
SPANISH	36	46	45	49	49
SPORT AND MOVEMENT SCIENCE	272	299	317	276	280
THEATRE	178	172	173	159	171
UNDECLARED	646	576	594	492	445

**FALL GRADUATE HEADCOUNT 2005 – 2009
BY PROGRAM**

	2005	2006	2007	2008	2009
ART - MAT	15	18	14	7	16
BILINGUAL EDUCATION - MED	1		1		
BIOLOGY - MAT	2	8	7	4	3
BUSINESS - MBA	74	78	59	59	64
CHEMISTRY - MAT	1	1	1	4	4
COUNSELING & PSYCHOLOGICAL SERVICES - MS	61	58	57	67	68
CRIMINAL JUSTICE - MS	NA	6	14	11	17
EARLY CHILDHOOD EDUCATION - MED	34	28	38	41	52
EDUCATIONAL LEADERSHIP - MED	17	15	8	15	11
ELEMENTARY EDUCATION - MED	148	137	115	101	102
ENGLISH - MA	24	25	38	38	38
ENGLISH - MA/MAT	9	17	21	14	9
ENGLISH - MAT	18	19	25	29	25
ENGLISH AS A SECOND LANGUAGE - MAT	19	20	18	25	38
FIELD BASED - MED	1	9	14	30	
GENERAL SCIENCE - MAT	NA	2	3	1	3
GEO-INFORMATION SCIENCE - MS	7	6	8	10	11
HIGHER EDUCATION IN STUDENT AFFAIRS - MED	26	26	32	34	42
HISTORY - MA	38	36	47	36	39
HISTORY - MAT	7	8	18	23	27
INDUSTRIAL/ORGANIZATIONAL PSYCHOLOGY - MS	NA	NA	NA	4	10
LIBRARY MEDIA STUDIES - MED	19	19	32	33	37
MATHEMATICS - MAT	5	10	12	13	12
MATHEMATICS - MS	6	16	12	11	6
MIDDLE SCHOOL MATH - MAT	9	10	10	8	10
MIDDLE SCHOOL - MED	37	25	34	28	26
MSN/MBA	2	1	2	1	3
NURSING - MSN	44	67	67	82	88
NURSING - RN/MSN		1	2	4	1
OCCUPATIONAL THERAPY - MS		5	16	17	18
PHYSICAL EDUCATION - MED	19	24	24	30	25
READING - MED	80	104	64	74	58
SCHOOL BUSINESS OFFICER	1	2	1		
SCHOOL COUNSELING - MED	55	53	46	34	54
SECONDARY EDUCATION - MED	57	42	40	22	3
SOCIAL WORK - MSW	217	229	217	211	222
SPANISH - MAT	11	20	27	29	27
SPECIAL EDUCATION - MED	145	138	145	161	159
TECHNOLOGY IN EDUCATION - MED	18	11	13	11	13
CAGS - EDUCATION	89	84	73	91	63
ADVANCED PROFESSIONAL STUDIES - COUNSELING	5	4	6	5	7
CERTIFICATES/LICENSURE PROGRAMS	33	53	52	53	65

LEFT BLANK INTENTIONALLY

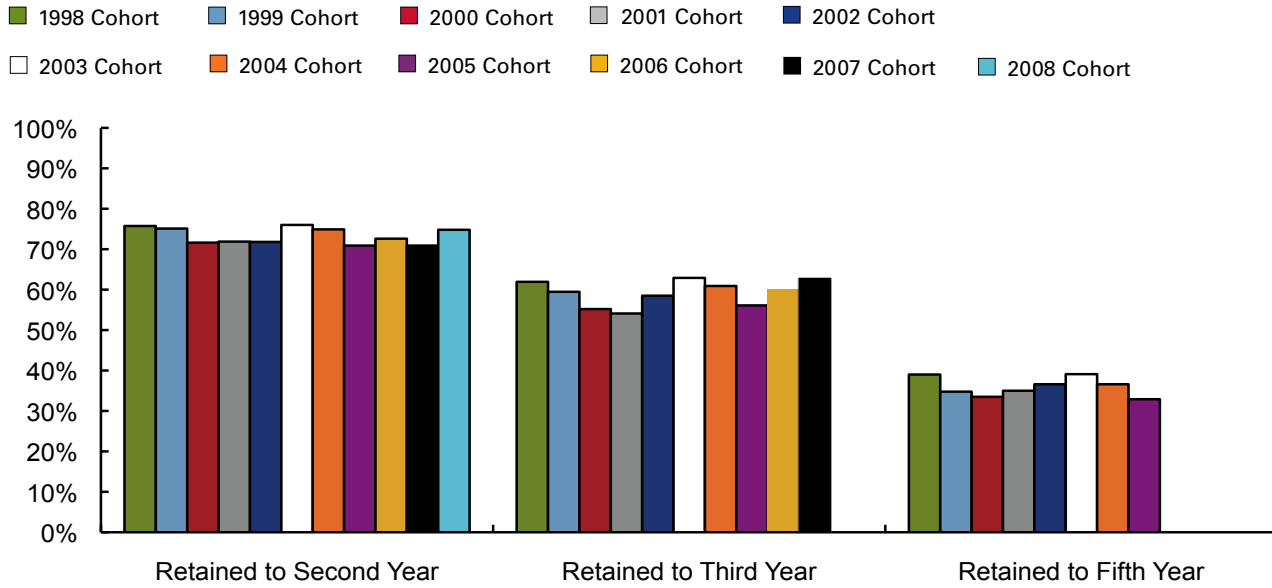
outcomes

**Retention and
Completion
at a Glance
2005 – 2009**

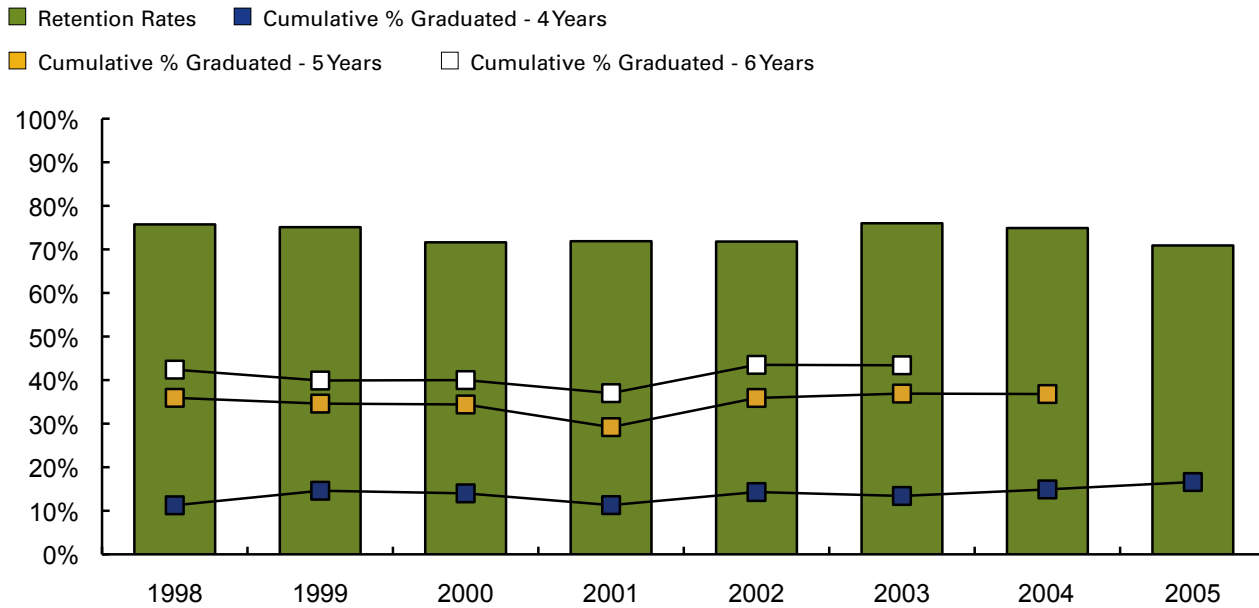


RETENTION AND COMPLETION

Undergraduate Cohort Retention



First Year Retention and 4-6 year Graduation Rates Cohorts 1998-2005

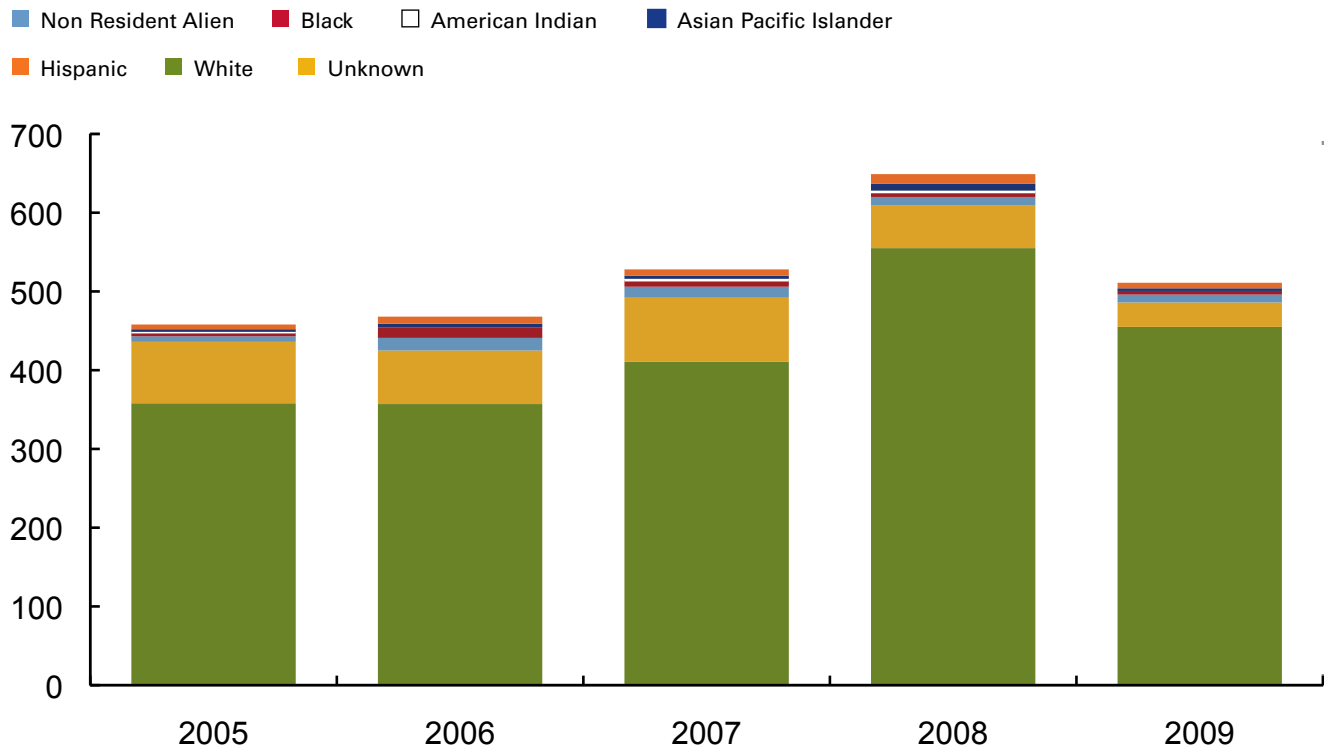


RETENTION AND COMPLETION

Undergraduate Degrees Conferred, by Race, 2005 – 2009



Graduate Degrees Conferred, by Race, 2005 – 2009



LEFT BLANK INTENTIONALLY

outcomes

**Retention and
Completion
2005 – 2009
Tables**



RETENTION AND CONTINUATION TOTAL AND BY GENDER

Cohort Type	Cohort Year	Headcount	Retention Rate	% Continued			
				to 3rd Year	to 5th Year	to 6th Year	to 7th Year
Total Cohort	1999	486	75.1%	59.5%	34.8%	10.5%	5.8%
	2000	585	71.6%	55.2%	33.5%	10.8%	4.8%
	2001	825	71.9%	54.1%	35.0%	12.2%	4.5%
	2002	837	71.8%	58.5%	36.6%	13.7%	4.8%
	2003	994	76.0%	62.9%	39.1%	12.9%	5.2%
	2004	1022	74.9%	60.9%	36.6%	12.2%	
	2005	1208	70.9%	56.1%	32.9%		
	2006	1129	72.6%	60.2%			
	2007	1064	70.9%	62.7%			
2008	1134	74.8%					
Female	1999	310	78.1%	62.3%	35.8%	11.3%	6.1%
	2000	376	74.7%	57.7%	35.6%	9.6%	3.5%
	2001	522	71.1%	55.2%	37.0%	11.3%	4.4%
	2002	562	73.7%	61.4%	37.7%	13.0%	4.4%
	2003	624	75.2%	62.0%	37.7%	12.3%	4.2%
	2004	654	78.0%	64.5%	38.5%	11.9%	
	2005	803	71.7%	57.7%	33.0%		
	2006	712	73.6%	61.8%			
	2007	644	72.4%	65.2%			
2008	708	76.6%					
Male	1999	176	69.9%	54.5%	33.0%	10.2%	5.1%
	2000	206	66.0%	51.0%	30.1%	13.1%	7.3%
	2001	303	73.3%	52.2%	31.7%	13.9%	4.6%
	2002	275	68.0%	52.7%	34.2%	15.3%	5.5%
	2003	370	77.3%	64.3%	41.6%	13.8%	7.0%
	2004	368	69.3%	54.4%	33.2%	12.8%	
	2005	405	69.1%	53.1%	32.8%		
	2006	417	71.0%	57.6%			
	2007	420	68.6%	58.8%			
2008	426	71.8%					

RETENTION AND CONTINUATION BY RACE

Cohort Type	Cohort Year	Headcount	Retention Rate	% Continued			
				to 3rd Year	to 5th Year	to 6th Year	to 7th Year
Black	1999	24	70.8%	62.5%	45.8%	20.8%	0.0%
	2000	27	66.7%	37.0%	25.9%	11.1%	7.4%
	2001	12	58.3%	33.3%	41.7%	25.0%	8.3%
	2002	23	78.3%	60.9%	43.5%	30.4%	4.3%
	2003	61	80.3%	63.9%	45.9%	9.8%	4.9%
	2004	89	84.3%	61.8%	36.0%	14.6%	
	2005	83	71.1%	53.0%	32.5%		
	2006	105	76.2%	58.1%			
	2007	108	76.9%	63.9%			
2008	111	79.3%					
American Indian Alaskan Native*	2000	14	71.4%	57.1%	28.6%	14.3%	7.1%
	2003	6	66.7%	66.7%	33.3%	0.0%	
	2004	4	75.0%	25.0%	0.0%	0.0%	
Asian Pacific Islander	1999	18	66.7%	50.0%	16.7%	5.6%	0.0%
	2000	4	100.0%	75.0%	75.0%	25.0%	25.0%
	2001	7	100.0%	100.0%	42.9%	0.0%	14.3%
	2002	35	77.1%	65.7%	45.7%	25.7%	14.3%
	2003	23	82.6%	69.6%	43.5%	30.4%	13.0%
	2004	35	68.6%	62.9%	48.6%	25.7%	
	2005	43	69.8%	48.8%	32.6%		
	2006	38	52.6%	52.6%			
	2007	27	63.0%	48.1%			
2008	51	66.6%					
Hispanic	1999	19	78.9%	52.6%	31.6%	21.1%	10.5%
	2000	5	80.0%	60.0%	0.0%	20.0%	0.0%
	2001	19	79.0%	47.4%	15.8%	10.5%	5.2%
	2002	41	68.3%	56.1%	36.6%	14.6%	4.9%
	2003	70	74.3%	57.1%	41.4%	17.1%	8.6%
	2004	83	74.7%	55.4%	33.7%	12.0%	
	2005	92	67.4%	56.5%	31.5		
	2006	102	71.6%	59.8%			
	2007	99	74.7%	65.7%			
2008	108	74.1%					
White	1999	363	74.1%	59.5%	36.4%	10.5%	6.1%
	2000	442	72.4%	55.4%	33.5%	10.0%	4.3%
	2001	740	71.8%	53.2%	34.9%	12.2%	4.1%
	2002	695	71.2%	58.0%	35.8%	11.7%	4.8%
	2003	802	75.6%	63.3%	38.4%	12.3%	5.0%
	2004	782	73.9%	60.7%	36.3%	11.5%	
	2005	943	70.6%	55.7%	33.0%		
	2006	839	73.1%	60.3%			
	2007	779	69.8%	62.6%			
2008	815	75.3%					
Non-Resident Alien	1999	27	88.9%	66.7%	14.8%	0.0%	0.0%
	2000	31	64.5%	58.1%	29.0%	9.7%	3.2%
	2001	40	75.0%	70.0%	45.0%	12.5%	10.0%
	2002	22	77.3%	63.6%	45.5%	27.3%	13.6%
	2003	18	66.7%	50.0%	22.2%	11.1%	0.0%
	2004	26	76.9%	76.9%	38.5%	11.5%	
	2005	28	89.3%	64.3%	39.3%		
	2006	22	72.7%	72.7%			
	2007	18	83.3%	72.2%			
2008	12	58.3%					

To protect the privacy of individuals, rates for cohorts of 3 or less are not reported.

**GRADUATION RATES
TOTAL AND BY GENDER**

Cohort Type	Cohort Year	Headcount	Retention Rate	Cumulative % Graduated		
				in 4 Years	in 5 Years	in 6 Years
Total	1998	746	75.7%	11.3%	35.9%	42.4%
	1999	486	75.1%	14.6%	34.6%	39.9%
	2000	585	71.6%	14.0%	34.4%	40.0%
	2001	825	71.9%	11.3%	29.2%	37.0%
	2002	837	71.8%	14.3%	35.9%	43.5%
	2003	994	76.0%	13.4%	36.9%	43.4%
	2004	1022	74.9%	14.9%	36.8%	
	2005	1208	70.9%	16.6%		
Female	1998	468	76.7%	13.9%	41.2%	47.6%
	1999	310	78.1%	16.5%	39.0%	43.9%
	2000	376	74.7%	15.7%	38.3%	44.4%
	2001	522	71.1%	12.6%	32.8%	40.3%
	2002	562	73.7%	16.9%	39.5%	47.0%
	2003	624	75.2%	15.5%	38.5%	44.9%
	2004	654	78.0%	16.2%	38.8%	
	2005	803	71.7%	18.9%		
Male	1998	278	74.1%	6.8%	27.0%	33.5%
	1999	176	69.9%	11.4%	26.7%	33.0%
	2000	206	66.0%	10.7%	26.7%	31.6%
	2001	303	73.3%	8.9%	23.2%	30.1%
	2002	275	68.0%	9.1%	28.7%	36.7%
	2003	370	77.3%	9.7%	34.3%	40.8%
	2004	368	69.3%	12.8%	32.2%	
	2005	405	69.1%	11.9%		

GRADUATION RATES BY RACE

Cohort Type	Cohort Year	Headcount	Retention Rate	Cumulative % Graduated		
				in 4 Years	in 5 Years	in 6 Years
Black	1998	44	86.4%	6.8%	27.3%	34.8%
	1999	24	70.8%	8.3%	25.0%	37.5%
	2000	27	66.7%	0.0%	7.4%	11.1%
	2001	12	58.3%	0.0%	0.0%	16.7%
	2002	23	78.3%	4.4%	26.1%	43.5%
	2003	61	80.3%	13.1%	37.7%	41.0%
	2004	89	84.3%	12.4%	28.1%	
	2005	83	71.1%	9.6%		
American Indian	1998	6	33.3%	0.0%	0.0%	16.7%
Alaskan Native	2000	14	71.4%	21.4%	28.6%	35.7%
	2003	6	66.7%	0.0%	16.7%	16.7%
	2004	4	75.0%	25.0%	25.0%	
Asian Pacific Islander	1998	21	71.4%	14.3%	38.1%	42.9%
	1999	18	66.7%	27.8%	33.3%	44.4%
	2000	4	100.0%	25.0%	50.0%	50.0%
	2001	7	100.0%	28.6%	57.1%	57.1%
	2002	35	77.1%	8.6%	34.3%	40.0%
	2003	23	82.6%	13.0%	26.1%	34.8%
	2004	35	68.6%	11.4%	34.3%	
	2005	43	69.8%	14.0%		
Hispanic	1998	39	76.9%	2.6%	12.8%	23.1%
	1999	19	78.9%	10.5%	21.1%	26.3%
	2000	5	80.0%	0.0%	0.0%	20.0%
	2001	19	79.0%	10.5%	26.3%	31.6%
	2002	41	68.3%	7.3%	26.8%	36.6%
	2003	70	74.3%	5.7%	24.3%	35.7%
	2004	83	74.7%	13.3%	32.5%	
	2005	92	67.4%	14.1%		
White	1998	566	76.0%	10.8%	37.6%	43.8%
	1999	363	74.1%	12.7%	34.4%	39.9%
	2000	442	72.4%	14.5%	36.0%	41.4%
	2001	740	71.8%	11.0%	29.0%	36.2%
	2002	695	71.2%	15.3%	37.6%	44.5%
	2003	802	75.6%	14.2%	38.7%	44.9%
	2004	782	73.9%	15.2%	37.6%	
	2005	943	70.6%	17.6%		
Non-Resident Alien	1998	35	68.6%	40.0%	57.1%	71.4%
	1999	27	88.9%	48.1%	55.6%	55.6%
	2000	31	64.5%	25.8%	41.9%	45.2%
	2001	40	75.0%	20.0%	45.0%	55.0%
	2002	22	77.3%	13.6%	27.3%	40.9%
	2003	18	66.7%	11.1%	38.9%	38.9%
	2004	26	76.9%	26.9%	57.7%	
	2005	28	89.3%	21.4%		

To protect the privacy of individuals, rates for cohorts of 3 or less are not reported.

**DEGREES CONFERRED 2005 – 2009
BY GENDER AND RACE**

	2005	2006	2007	2008	2009
Female					
Non Resident Alien	27	36	38	44	52
Black	26	23	37	59	43
American Indian	3	0	5	6	1
Asian Pacific Islander	10	16	26	27	26
Hispanic	14	28	40	48	56
White	744	814	914	1073	962
Unknown	99	113	103	78	63
Female Total	923	1030	1163	1335	1203
% Non-White*	6.6%	7.6%	10.6%	11.6%	11.6%
% Female	69.8%	71.5%	70.8%	69.6%	68.0%
Male					
Non Resident Alien	22	23	34	22	40
Black	3	16	22	34	23
American Indian	1	2	1	2	0
Asian Pacific Islander	5	3	5	12	10
Hispanic	12	11	14	18	17
White	317	323	370	468	449
Unknown	40	32	33	27	27
Male Total	400	410	479	583	566
% Non-White*	6.2%	9.0%	10.2%	12.4%	10.0%
% Male	30.2%	28.5%	29.2%	30.4%	32.0%
Total					
Non Resident Alien	49	59	72	66	92
Black	29	39	59	93	66
American Indian	4	2	6	8	1
Asian Pacific Islander	15	19	31	39	36
Hispanic	26	39	54	66	73
White	1061	1137	1284	1541	1411
Unknown	139	145	136	105	90
Total	1323	1440	1642	1918	1769
% Non-White*	6.5%	8.0%	10.5%	11.8%	11.1%

* % Non-White excludes Non-resident Alien Students and students with unknown race.

**DEGREES CONFERRED 2005 – 2009
BY GENDER AND DEGREE**

	2005	2006	2007	2008	2009
Female					
Bachelor of Arts	86	100	69	104	96
Bachelor of Science	351	401	477	491	519
Bachelor of Science Business Administration	100	88	114	140	120
Bachelor of Fine Arts	4	5	5	6	8
Bachelor of General/Liberal Studies	1	6	4	13	11
Bachelor of Social Work	18	28	22	30	31
Master of Arts	6	7	8	18	21
Master of Occupational Therapy				3	11
Master of Science	12	29	32	32	40
Master of Social Work	72	67	62	62	60
Master of Business Administration	11	11	14	15	10
Master of Education	227	226	288	337	208
Master of Arts in Teaching	23	24	24	45	40
MSN/MBA		1			
Master of Arts/Master of Arts in Teaching		1	1	1	
Certificate - Advanced Graduate Study	12	32	37	32	21
Other Graduate Certificates		4	4	4	1
Teacher Certification/Licensure			2	2	6
Female Total	923	1030	1163	1335	1203
Male					
Bachelor of Arts	42	46	52	47	63
Bachelor of Science	149	160	181	222	225
Bachelor of Science Business Administration	85	74	128	144	113
Bachelor of Fine Arts	5	7	3	3	6
Bachelor of General/Liberal Studies	4	8	3	8	3
Bachelor of Social Work		1	1	5	8
Master of Arts	9	7	13	10	13
Master of Occupational Therapy					1
Master of Science	10	12	10	17	15
Master of Social Work	12	7	8	11	5
Master of Business Administration	7	9	15	13	9
Master of Education	64	56	45	74	58
Master of Arts in Teaching	5	11	7	11	19
Master of Arts/Master of Arts in Teaching			1		1
Certificate - Advanced Graduate Study	8	10	12	14	18
Other Graduate Certificates		2		3	8
Teacher Certification/Licensure				1	1
Male Total	400	410	479	583	566

Female and Male may not equal total degrees due to unknown gender.

**DEGREES CONFERRED 2005 – 2009
BY LEVEL AND RACE**

	2005	2006	2007	2008	2009
Bachelors					
Non Resident Alien	42	45	57	54	78
Black	23	23	50	84	61
American Indian	3	2	5	7	1
Asian Pacific Islander	13	14	26	30	33
Hispanic	20	29	46	54	66
White	687	753	837	943	910
Unknown	57	58	38	41	54
Bachelors Total	845	924	1059	1213	1203
% Non-White*	7.9%	8.3%	13.2%	15.7%	15.0%
% Female	66.3%	68.0%	65.3%	64.6%	65.2%
Masters					
Non Resident Alien	7	16	14	11	10
Black	6	13	9	7	5
American Indian	1		1	1	
Asian Pacific Islander	2	5	4	9	3
Hispanic	6	9	8	12	7
White	358	357	411	555	455
Unknown	78	68	81	54	31
Masters Total	458	468	528	649	511
% Non-White*	4.0%	7.0%	5.1%	5.0%	3.2%
% Female	76.6%	78.2%	81.3%	79.0%	76.3%
Certificates					
Non Resident Alien		1	1	1	4
Black				2	
American Indian					
Asian Pacific Islander			1		
Hispanic		1			
White	16	27	36	43	46
Unknown	4	19	17	10	5
Certificate Total	20	48	55	56	55
% Non-White*	0.0%	3.6%	2.7%	4.4%	0.0%
% Female	60.0%	75.0%	78.2%	67.9%	69.1%

* % Non-White excludes Non-resident Alien Students and students with unknown race.

**UNDERGRADUATE DEGREES CONFERRED 2005 – 2009
BY MAJOR**

	2005	2006	2007	2008	2009
ART	36	41	40	38	42
ATHLETIC TRAINING	NA	NA	NA	NA	7
BIOLOGY	27	25	36	29	36
BUSINESS ADMINISTRATION	185	162	242	284	233
CARTOGRAPHY	5	6	4	2	6
CHEMISTRY	4	10	10	16	5
COMMUNICATIONS	59	59	71	58	105
COMPUTER SCIENCE	21	15	11	8	5
CRIMINAL JUSTICE	61	73	82	91	86
ECONOMICS	4	4	3	4	8
EDUCATION	106	112	129	127	100
ENGLISH	41	37	26	35	39
FIRE SCIENCE	8	11	9	8	13
GENERAL/LIBERAL STUDIES	5	14	7	21	14
GEOGRAPHY	27	14	19	17	20
GEOLOGICAL SCIENCES	5	4	7	6	5
HISTORY	23	27	27	36	30
MATHEMATICS	11	9	18	9	6
MUSIC		2	3	6	11
NURSING	63	81	125	162	165
OCCUPATIONAL THERAPY	9	8	5	16	6
OFFICE MANAGEMENT		1			
POLITICAL SCIENCE	14	15	11	13	10
PSYCHOLOGY	55	65	61	78	89
SOCIAL WORK	18	29	23	35	39
SOCIOLOGY	13	23	24	27	41
SPANISH	4	6	3	3	11
SPORT AND MOVEMENT SCIENCE	27	46	44	58	46
THEATER	14	25	19	26	25
Total	845	924	1059	1213	1203

To provide an unduplicated headcount, double majors are counted under only one major. Therefore, the counts for individual majors are not complete. This is particularly important since students pursuing teaching with an education major are also required to complete a major in an Arts and Science discipline.

**GRADUATE DEGREES CONFERRED 2005 – 2009
BY PROGRAM**

DEGREES	2005	2006	2007	2008	2009
BUSINESS ADMINISTRATION	18	20	29	28	19
COUNSELING	12	24	15	11	19
CRIMINAL JUSTICE				5	4
EDUCATION	319	309	364	468	325
ENGLISH	10	18	9	11	16
GEO-INFORMATION	4	4	5	2	6
HISTORY	5	5	14	17	19
MATHEMATICS	3		5	12	6
NURSING	3	13	17	19	20
NURSING/MBA		1			
OCCUPATIONAL THERAPY				3	12
SOCIAL WORK	84	74	70	73	65
Total	458	468	528	649	511

CERTIFICATES	2005	2006	2007	2008	2009
CAGS - EDUCATION	20	42	47	46	38
CAGS - COUNSELING		1	2		1
CERTIFIED FINANCIAL PLANNER		4	2	1	8
CERTIFICATE NURSE EDUCATION		1	2	1	3
CERTIFICATE GEO-INFORMATION SCIENCE				5	1
TEACHER CERTIFICATION/LICENSURE			2	3	4
Total	20	48	55	56	55

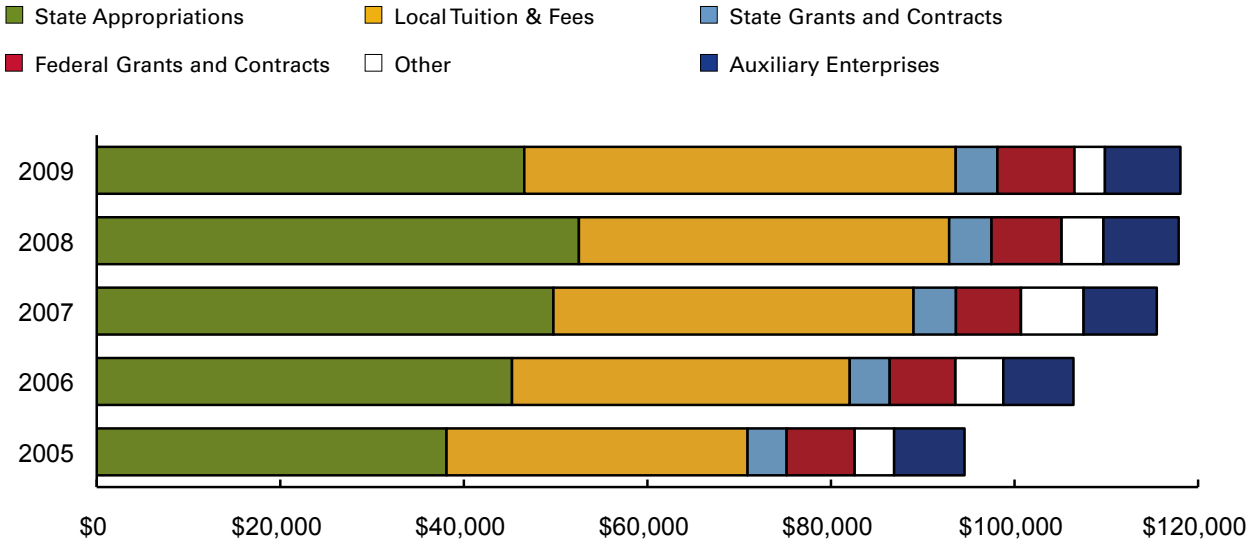
resources

**College Resources
at a Glance
2005 – 2009**

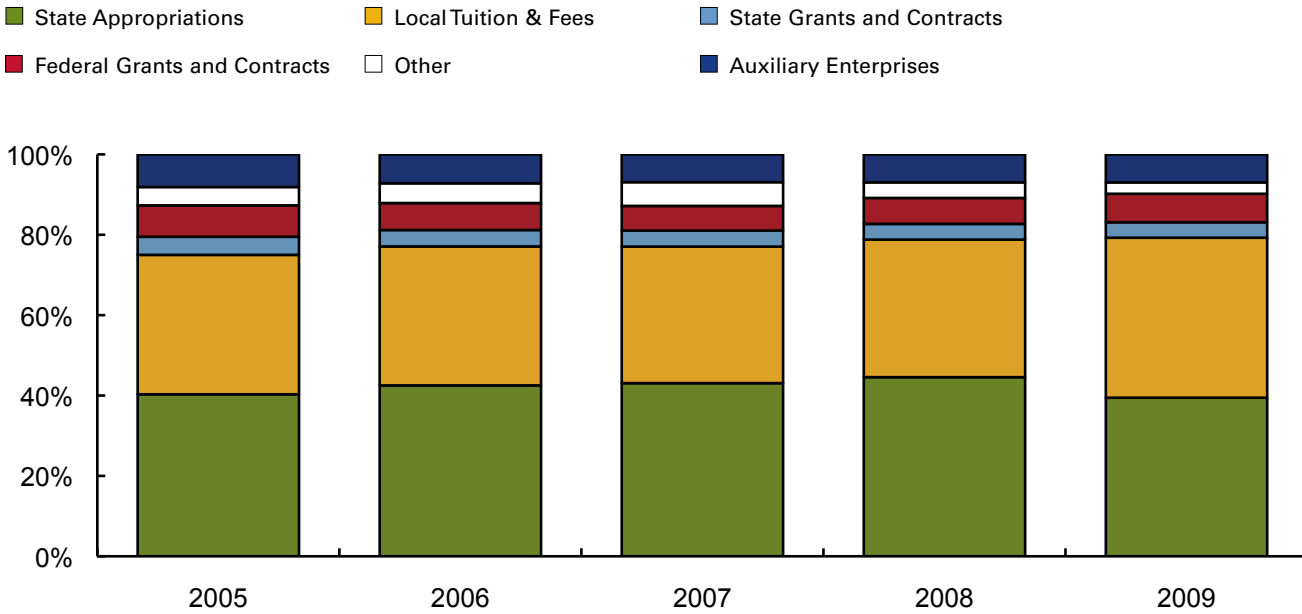


COLLEGE RESOURCES: REVENUES

Revenues FY2005 – FY2009 (in thousands)

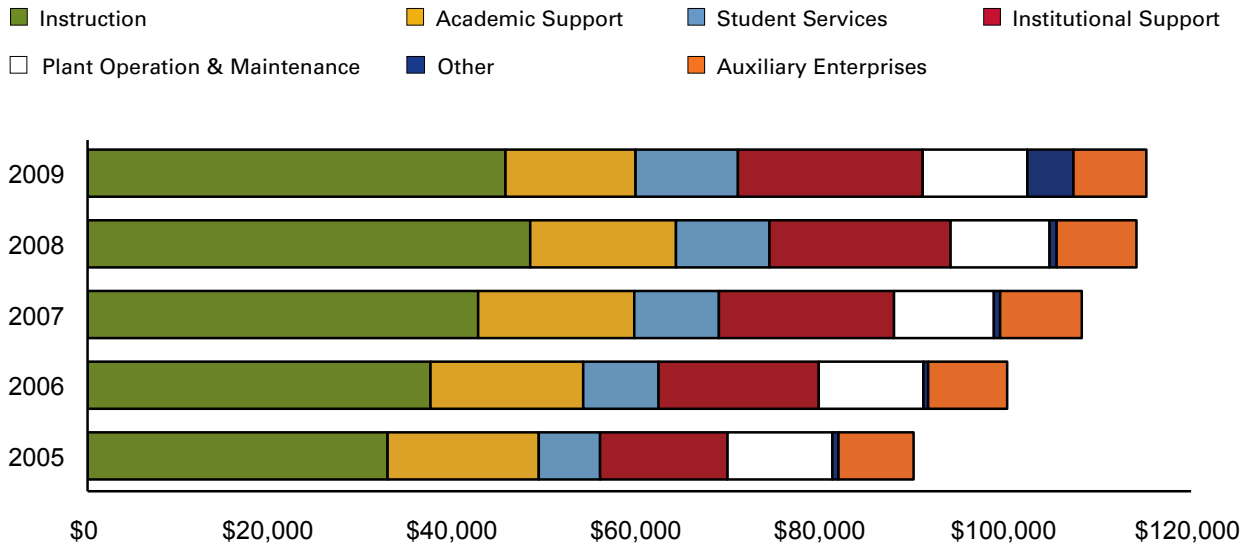


Revenues FY2005 – FY2009 (Revenue Category as % of Total Revenues)

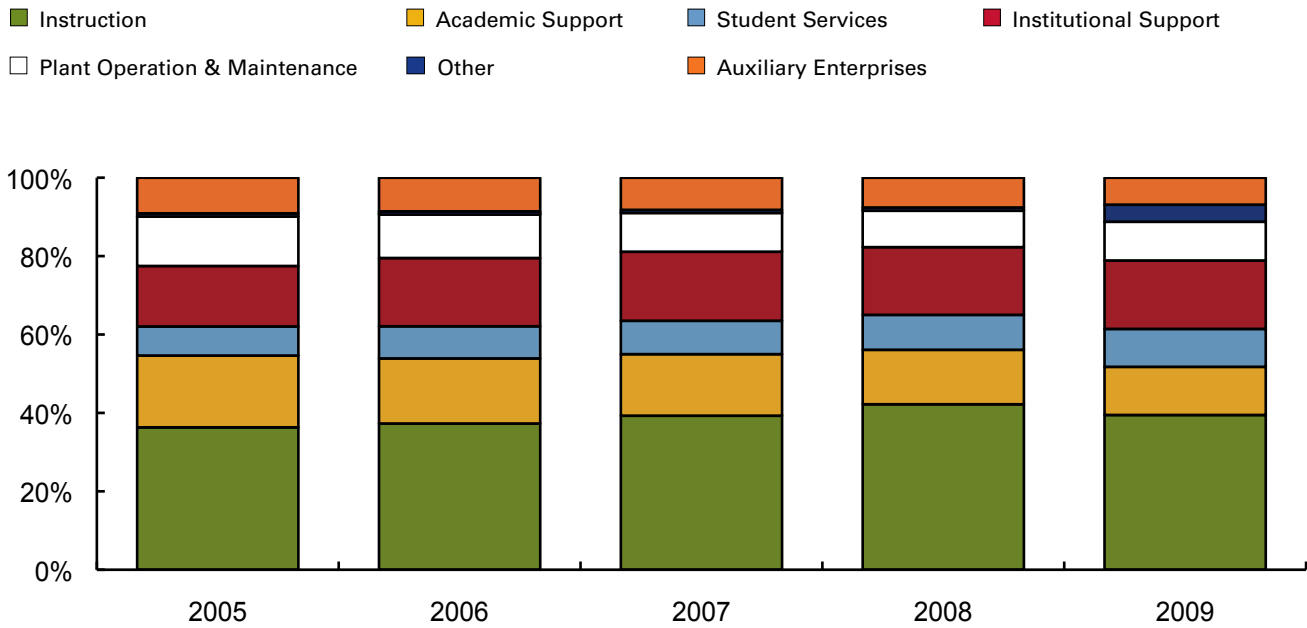


COLLEGE RESOURCES: OPERATING EXPENSES

Operating Expenses FY2005 - FY2009 (in thousands)

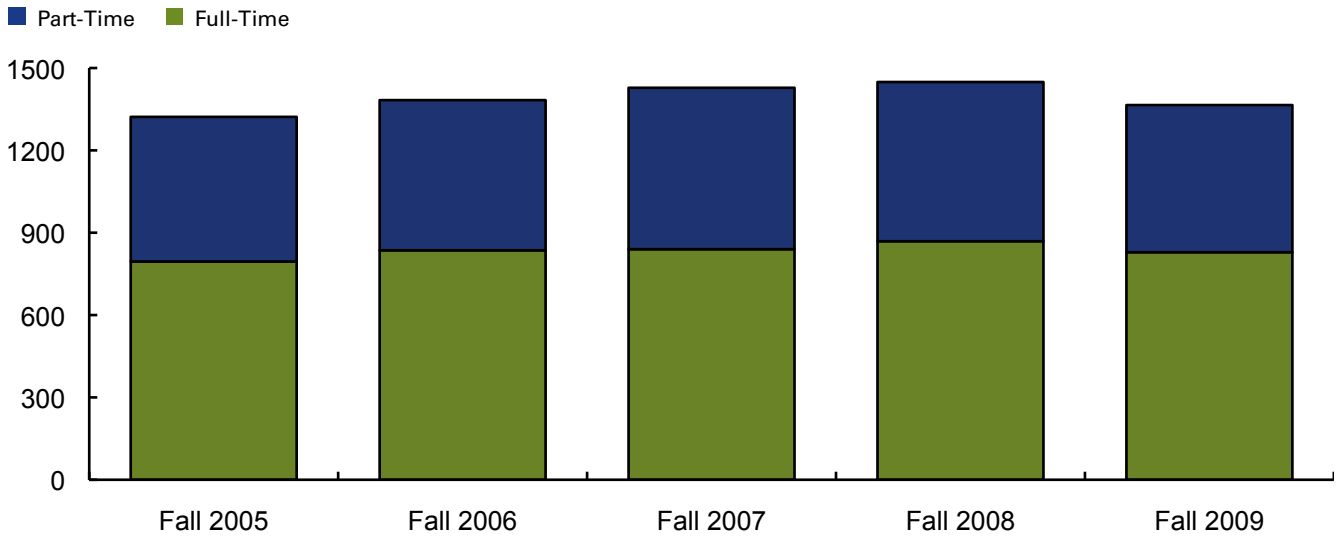


Operating Expenses FY2005 - FY2009 (Expense Categories as % of Total Expenditures)



COLLEGE RESOURCES: EMPLOYEES

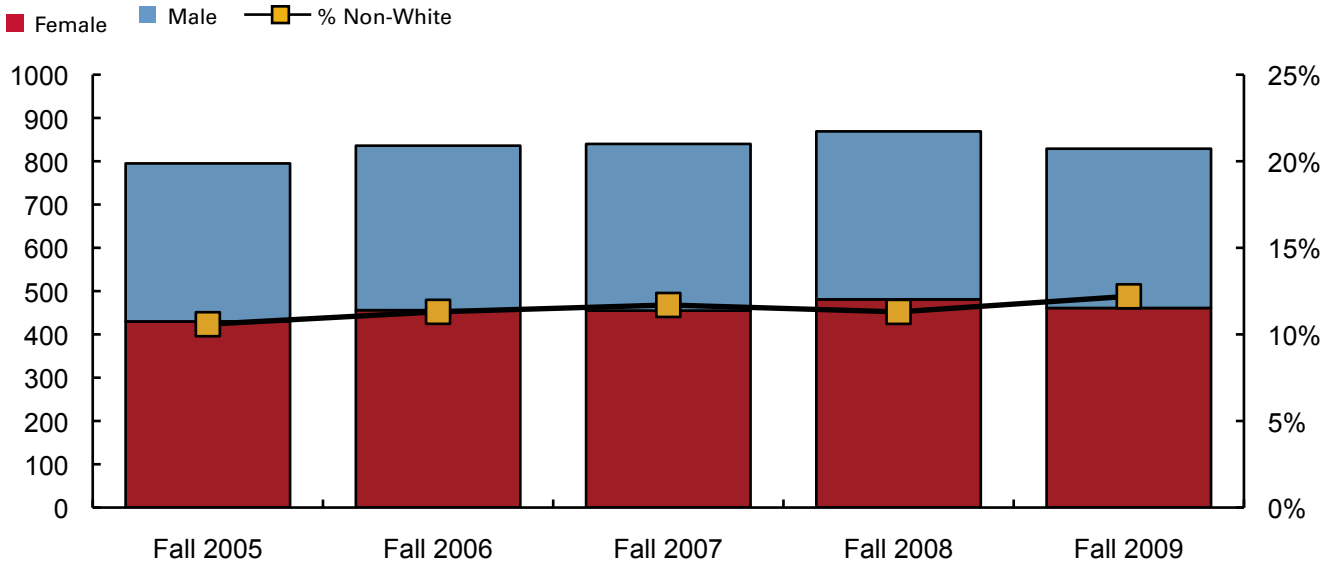
Employee Headcount: Full-time/Part-time



Proportion Full-time/Part-time: All Employees

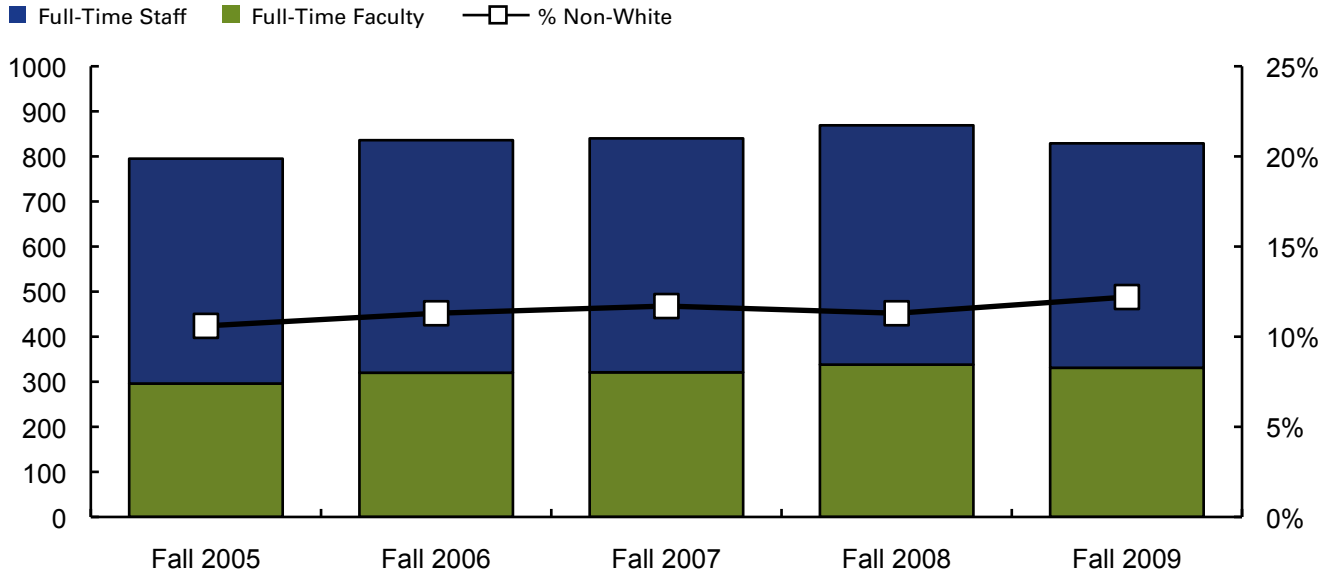


All Full Time Employees by Gender

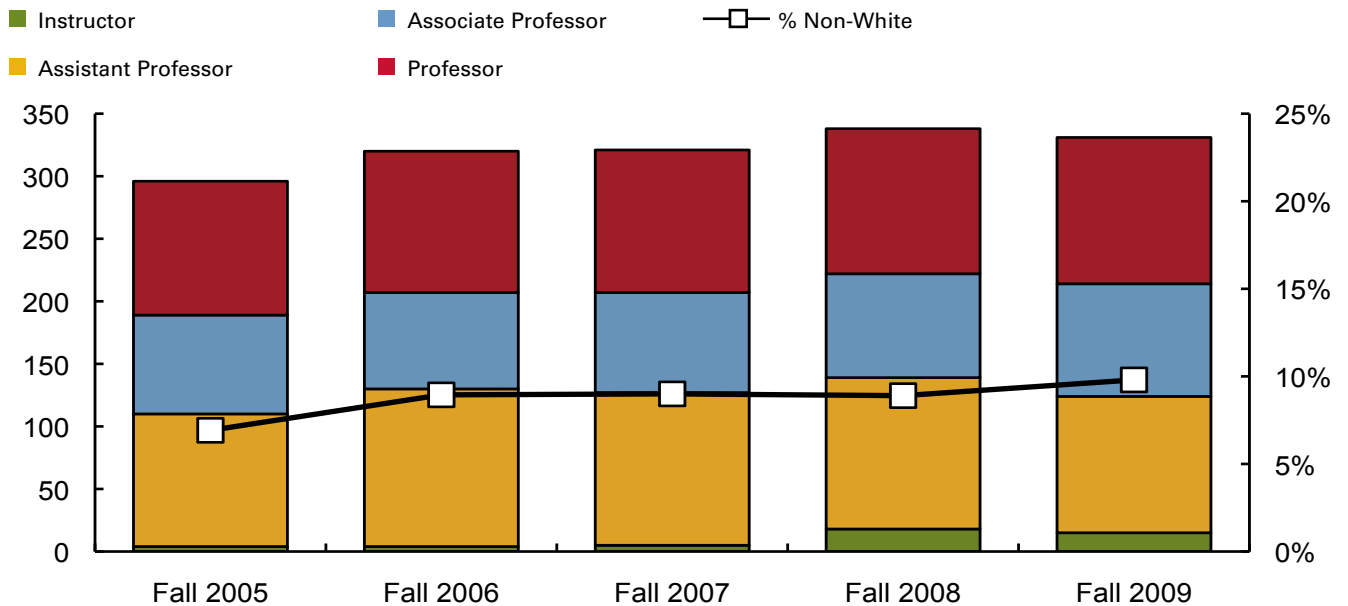


COLLEGE RESOURCES: EMPLOYEES

All Full-Time Employees: Faculty or Staff



Full-Time Faculty by Rank



LEFT BLANK INTENTIONALLY

resources

**College Resources
2005 – 2009
Tables**



REVENUES 2005 – 2009 (IN THOUSANDS)

	2005	2006	2007	2008	2009
LOCAL TUITION & FEES	\$32,799	\$36,798	\$39,235	\$40,341	\$47,003
STATE APPROPRIATIONS	\$38,113	\$45,246	\$49,759	\$52,537	\$46,587
FEDERAL GRANTS and CONTRACTS	\$7,394	\$7,140	\$7,078	\$7,613	\$8,371
STATE GRANTS and CONTRACTS	\$4,256	\$4,354	\$4,619	\$4,614	\$4,544
PRIVATE GRANTS & GIFTS	\$926	\$1,110	\$1,362	\$1,152	\$1,252
INDEPENDENT OPERATIONS	\$-	\$-	\$-	\$-	\$-
OTHER	\$3,392	\$4,125	\$5,470	\$3,425	\$2,091
AUXILIARY ENTERPRISES	\$7,674	\$7,649	\$7,978	\$8,202	\$8,228
TOTAL	\$94,554	\$106,422	\$115,501	\$117,884	\$118,076

OPERATING EXPENSES 2005 – 2009 (IN THOUSANDS)

	2005	2006	2007	2008	2009
INSTRUCTION	\$32,625	\$37,292	\$42,475	\$48,136	\$45,449
PUBLIC SERVICE	\$403	\$339	\$385	\$396	\$366
ACADEMIC SUPPORT	\$16,441	\$16,605	\$16,973	\$15,849	\$14,139
STUDENT SERVICES	\$6,665	\$8,193	\$9,203	\$10,168	\$11,131
INSTITUTIONAL SUPPORT	\$13,861	\$17,420	\$19,042	\$19,694	\$20,094
PLANT OPERATION & MAINTENANCE	\$11,387	\$11,373	\$10,858	\$10,759	\$11,380
SCHOLARSHIPS & FELLOWSHIPS	\$273	\$186	\$298	\$376	\$4,647
AUXILIARY ENTERPRISES	\$8,167	\$8,590	\$8,875	\$8,679	\$7,925
TOTAL	\$89,822	\$99,998	\$108,109	\$114,057	\$115,131

Revenues exclude capital and additions to endowment
Operating expenses exclude depreciation

FULL TIME EMPLOYEES BY RACE AND GENDER

	2005	2006	2007	2008	2009
Female					
Non Resident Alien	3	3	3	4	4
Black	9	8	12	14	14
American Indian	1	1	3	3	2
Asian Pacific Islander	9	10	9	8	8
Hispanic	11	15	15	16	19
White	387	407	399	419	398
Unknown	10	12	14	17	16
Female Total	430	456	455	481	461
% Non-White*	7.2%	7.7%	8.9%	8.9%	9.8%
% Female	54.1%	54.5%	54.2%	55.4%	55.6%
Male					
Non Resident Alien	1	1	1	2	3
Black	22	23	20	18	19
American Indian	0	0	0	0	0
Asian Pacific Islander	12	13	14	15	14
Hispanic	17	21	21	20	20
White	297	307	312	316	296
Unknown	16	15	17	17	16
Male Total	365	380	385	388	368
% Non-White*	14.7%	15.7%	15.0%	14.4%	15.2%
% Male	45.9%	45.5%	45.8%	44.6%	44.4%
Total					
Non Resident Alien	4	4	4	6	7
Black	31	31	32	32	33
American Indian	1	1	3	3	2
Asian Pacific Islander	21	23	23	23	22
Hispanic	28	36	36	36	39
White	684	714	711	735	694
Unknown	26	27	31	34	32
Total	795	836	840	869	829
% Non-White*	10.6%	11.3%	11.7%	11.3%	12.2%

* % Non-White excludes Non-resident Alien and Unknown.

**PART TIME EMPLOYEES
BY RACE AND GENDER**

	2005	2006	2007	2008	2009
Female					
Non Resident Alien	2	4	4	5	2
Black	9	8	6	5	5
American Indian	0	0	0	0	1
Asian Pacific Islander	5	8	6	2	6
Hispanic	8	15	17	8	5
White	267	271	291	286	279
Unknown	32	29	39	40	31
Female Total	323	335	363	346	329
% Non-White*	7.6%	10.3%	9.1%	5.0%	5.7%
% Female	61.3%	61.2%	61.7%	59.7%	61.4%
Male					
Non Resident Alien	1	0	2	1	1
Black	1	2	4	4	1
American Indian	0	0	1	1	1
Asian Pacific Islander	1	2	1	1	0
Hispanic	1	2	1	2	3
White	170	181	189	199	180
Unknown	30	25	27	26	21
Male Total	204	212	225	234	207
% Non-White*	1.7%	3.2%	3.6%	3.9%	2.7%
% Male	38.7%	38.8%	38.3%	40.3%	38.6%
Total					
Non Resident Alien	3	4	6	6	3
Black	10	10	10	9	6
American Indian	0	0	1	1	2
Asian Pacific Islander	6	10	7	3	6
Hispanic	9	17	18	10	8
White	437	452	480	485	459
Unknown	62	54	66	66	52
Total	527	547	588	580	536
% Non-White*	5.4%	7.6%	7.0%	4.5%	4.6%

* % Non-White excludes Non-resident Alien and Unknown.

FULL TIME FACULTY BY RACE AND GENDER

	2005	2006	2007	2008	2009
Female					
Non Resident Alien	0	0	0	0	1
Black	1	1	2	4	4
American Indian	0	0	1	1	0
Asian Pacific Islander	4	6	6	5	5
Hispanic	3	3	2	2	5
White	135	146	144	154	152
Unknown	4	4	5	7	7
Female Total	147	160	160	173	174
% Non-White*	5.6%	6.4%	7.1%	7.2%	8.4%
% Female	49.7%	50.0%	49.8%	51.2%	52.6%
Male					
Non Resident Alien	0	0	0	1	2
Black	5	5	4	3	4
American Indian	0	0	0	0	0
Asian Pacific Islander	7	10	11	11	10
Hispanic	0	3	2	3	3
White	134	139	139	142	134
Unknown	3	3	5	5	4
Male Total	149	160	161	165	157
% Non-White*	8.2%	11.5%	10.9%	10.7%	11.3%
% Male	50.3%	50.0%	50.2%	48.8%	47.4%
Total					
Non Resident Alien	0	0	0	1	3
Black	6	6	6	7	8
American Indian	0	0	1	1	0
Asian Pacific Islander	11	16	17	16	15
Hispanic	3	6	4	5	8
White	269	285	283	296	286
Unknown	7	7	10	12	11
Total	296	320	321	338	331
% Non-White*	6.9%	8.9%	9.0%	8.9%	9.8%

* % Non-White excludes Non-resident Alien and Unknown.

**FULL TIME FACULTY
BY ACADEMIC RANK**

	2005	2006	2007	2008	2009
Professor	107	113	114	116	117
Associate Professor	79	77	80	83	90
Assistant Professor	106	126	122	121	109
Instructor	4	4	5	18	15

**PART TIME FACULTY
BY RACE AND GENDER**

	2005	2006	2007	2008	2009
Female					
Non Resident Alien	1	1	1	2	0
Black	3	4	4	3	5
American Indian	0	0	0	0	0
Asian Pacific Islander	5	4	2	2	5
Hispanic	4	5	5	6	3
White	177	188	197	196	216
Unknown	24	26	31	33	27
Female Total	214	228	240	242	256
% Non-White*	6.3%	6.5%	5.3%	5.3%	5.7%
% Female	57.5%	57.4%	57.7%	55.9%	59.8%
Male					
Non Resident Alien	1	0	1	1	1
Black	1	2	3	3	1
American Indian	0	0	1	1	1
Asian Pacific Islander	1	2	1	1	0
Hispanic	1	1	1	2	1
White	130	143	146	160	149
Unknown	24	21	23	23	19
Male Total	158	169	176	191	172
% Non-White*	2.3%	3.4%	3.9%	4.2%	2.0%
% Male	42.5%	42.6%	42.3%	44.1%	40.2%
Total					
Non Resident Alien	2	1	2	3	1
Black	4	6	7	6	6
American Indian	0	0	1	1	1
Asian Pacific Islander	6	6	3	3	5
Hispanic	5	6	6	8	4
White	307	331	343	356	365
Unknown	48	47	54	56	46
Total	372	397	416	433	428
% Non-White*	4.7%	5.2%	4.7%	4.8%	4.2%

* % Non-White excludes Non-resident Alien and Unknown.

ENDNOTES AND SOURCES

Admissions Data: HEIRS Submissions Fall 2005 – Fall 2009

Enrollment Data: HEIRS Submissions for Fall 2005 – Fall 2009

Enrollment by Program Data: Final Fall End of Term Census Data Fall 2005 – Fall 2006;
Census Date Data Fall 2007 – Fall 2009

Retention and Completion Data: Submissions to the Center for Student Retention Data Exchange (CSRDE)

Degrees Conferred Data: HEIRS Submissions for FY2005 – 2009

Resources Data: IPEDS Human Resources and Finance Surveys

INSIDE BACK COVER
BLACK BOARD

