

 Salem | STATE COLLEGE

Educating you for life

2007

SALEM STATE COLLEGE FACT BOOK

TABLE OF CONTENTS

INTRODUCTION	02
GLOSSARY AND DATA DEFINITIONS	03
SECTION I - ADMISSIONS DATA	
Fall Admissions At a Glance	06
Freshmen Applications, Admissions, Enrollment	14
By Gender	15
By Race	16
Freshmen Top Fifteen Feeder High Schools	17
Freshmen Majors	18
Transfer Applications, Admissions, Enrollment	19
By Gender	20
By Race	21
Transfer Top Ten Feeder Colleges	22
Transfer Majors	23
Graduate Applications, Admissions, Enrollment	24
By Gender	24
By Race	25
Graduate Programs	26
SECTION II - ENROLLMENT DATA	
Enrollment At a Glance	28
Fall Headcount 2003-2007	32
Undergraduate Enrollment	
Fall Undergraduate Headcount 2003-2007	33
Fall Degree Seeking Undergraduate Headcount 2003-2007	34
Fall Degree Seeking Full Time Undergraduate Headcount 2003-2007	35
Fall Degree Seeking Part Time Undergraduate Headcount 2003-2007	36
Fall Non-Degree Seeking Undergraduate Headcount 2003-2007	37
Graduate Enrollment	
Fall Graduate Headcount 2003-2007	38
Fall Degree Seeking Graduate Headcount 2003-2007	39
Fall Degree Seeking Full Time Graduate Headcount 2003-2007	40
Fall Degree Seeking Part Time Graduate Headcount 2003-2007	41
Fall Non-Degree Seeking Graduate Headcount 2003-2007	42
Annual Enrollment Headcount and FTE 2003-2007	43
Enrollment by Major/Program	
Undergraduate Headcount by Major 2003-2007	44
Graduate Headcount by Program 2003-2007	45
SECTION III - RETENTION AND COMPLETION	
Outcomes At a Glance	48
Retention and Continuation, Total and by Gender	52
Retention and Continuation, by Race	53
Graduation Rates, Total and by Gender	54
Graduation Rates, by Race	55
Degrees Conferred by Gender and Race	56
Degrees Conferred by Degree and Gender	57
Degrees Conferred by Level and Race	58
Undergraduate Degrees Conferred by Major	59
Graduate Degrees Conferred by Program	60
SECTION IV - COLLEGE RESOURCES	
College Resources At a Glance	62
Revenues and Expenses	68
Full Time Employees by Race and Gender	69
Part Time Employees by Race and Gender	70
Full Time Faculty by Race and Gender	71
Full Time Faculty by Academic Rank	72
Part Time Faculty by Race and Gender	73
ENDNOTES AND SOURCES	74

INTRODUCTION

The following is the *2007 Salem State College Fact Book*. Most enrollment information is derived from and aligns with data reported to external organizations like the National Center for Education Statistics (NCES) through the Integrated Postsecondary Education Data System (IPEDS) and the Massachusetts Department of Higher Education through the Higher Education Information Resource System (HEIRS). It provides a single source summary of most of the information in those individual reports.

This year the Fact Book adds a page for fall enrollment by major for undergraduate students and by program for graduate students. These programmatic enrollment trends do not align to externally reported data for several reasons. These counts exclude non-degree seeking students. Students matriculated in more than one major or program are counted in all of their matriculated programs. Therefore, some students are omitted entirely and others are counted twice.

Institutions have a wide variety of data and information needs. This Fact Book reflects data from comparable points in time, over time. The data can inform decision makers by delineating trends as well as providing context and perspective. Today's data collection and retrieval systems provide far more immediate information for operational decisions and the Fact Book should be used to supplement that data and for providing general information about the college.

I extend thanks and appreciation to all who contribute to the development of this Fact Book: Steve Jervey who prepares reports that contribute to the resource portion of the book; Theresa Jenkins for her willingness to test charts and tables and for the painstaking and labor-intensive work of establishing the framework for each new Fact Book; and our new Research Analyst, Yan Xie, who has been an invaluable fresh eye in the editing process. Thank you all.

Karen Sayles

Director, Institutional Research and Assessment

June, 2008

GLOSSARY AND DATA DEFINITIONS

This glossary is organized by the order in which a term first appears in the Fact Book. Many of these terms have more than one meaning. The definition reflects how the term is used in the section. If a term is defined only once, the term should be interpreted in the same manner in all sections of the Fact Book.

Admissions Data:

Freshman – An applicant who has not attended a college other than Salem State College since high school

SAT– Refers to the SAT Reasoning Test. The Salem State Admissions Office utilizes the Critical Reading/Verbal and Mathematics/Math components to assist in making admissions decisions. The component parts scores, maximum 800, can be combined into a single score totaling up to 1600.

Transfer – An applicant who attended a postsecondary institution other than Salem State College prior to application to Salem State College

Applied – Counts only complete and actionable applications for the Fall Term

Acceptance Rate – The proportion of applicants accepted

Yield – The proportion of accepted applicants who are enrolled in classes on the enrollment freeze date

Non Resident Alien – Individuals who are not citizens, native or naturalized, of the United States. Under federal reporting guidelines Non Resident Alien is a separate racial reporting classification. Non resident alien students who might designate a racial identity for themselves cannot be reported under that racial identity.

Unknown – Includes unknown and other

Enrollment Data:

All College – Includes all students enrolled in credit courses both graduate and undergraduate, day or evening

Undergraduate – Includes students enrolled in undergraduate credit courses

Graduate – Includes students enrolled in graduate credit courses

To ensure an unduplicated headcount, the few students enrolled in both graduate and undergraduate courses are counted as one or the other based on the majority of the enrolled credits. If a student is enrolled in an equal number of graduate and undergraduate credits, the student is assigned to the category of any matriculated program. If such a student is not matriculated, the student is counted as graduate.

Degree Seeking – A student who has been admitted to a course of study intended to result in a degree or certificate

Full Time – An undergraduate student enrolled in 12 or more credits or a graduate student enrolled in 9 or more credits in the given semester

Retention and Completion:

Cohort – Defined each fall including only new, degree seeking students who have not attended any other postsecondary institution since high school and who attended college on a full time basis in their first semester

Retention Rate – Proportion of the cohort for a given year who are enrolled in the following fall

Graduation Rate – Proportion of the cohort for a given year who have graduated within a given period of time

LEFT BLANK INTENTIONALLY

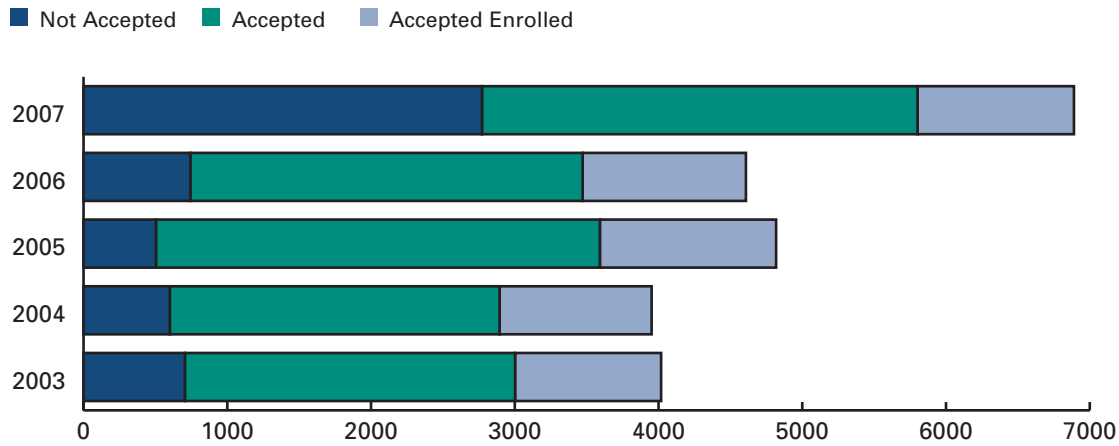
admissions

Fall Admissions > > >
At a Glance
2003-2007

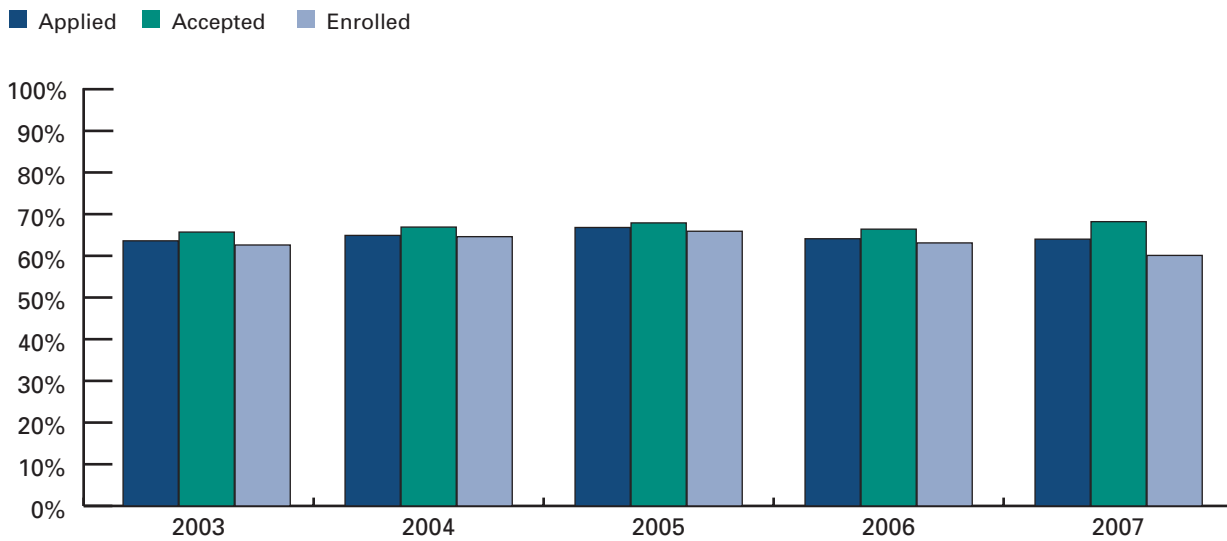


FRESHMAN ADMISSIONS: FALL 2003 — 2007

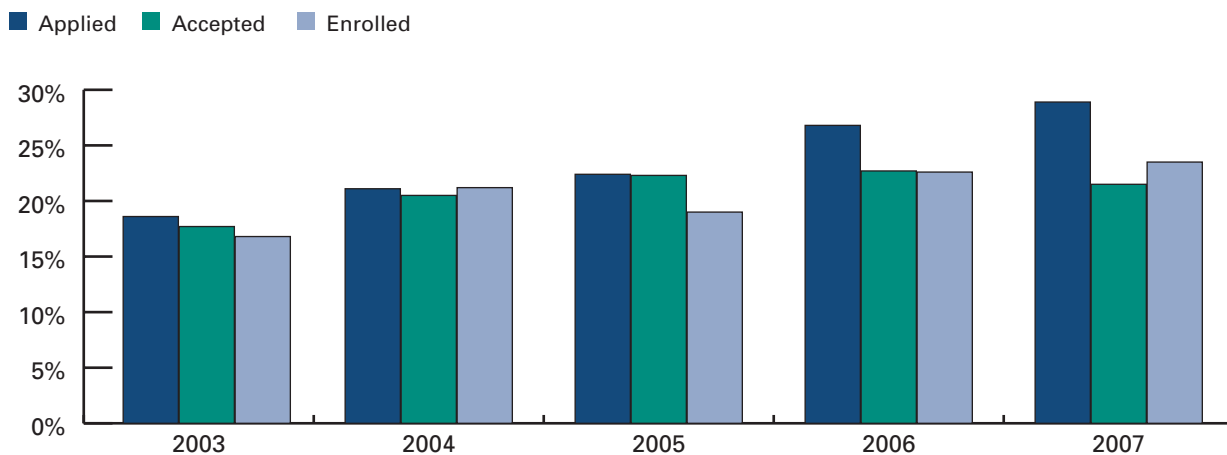
Freshman Applications Fall



Females as a Percent of Freshman Applicants, Accepted, and Enrolled

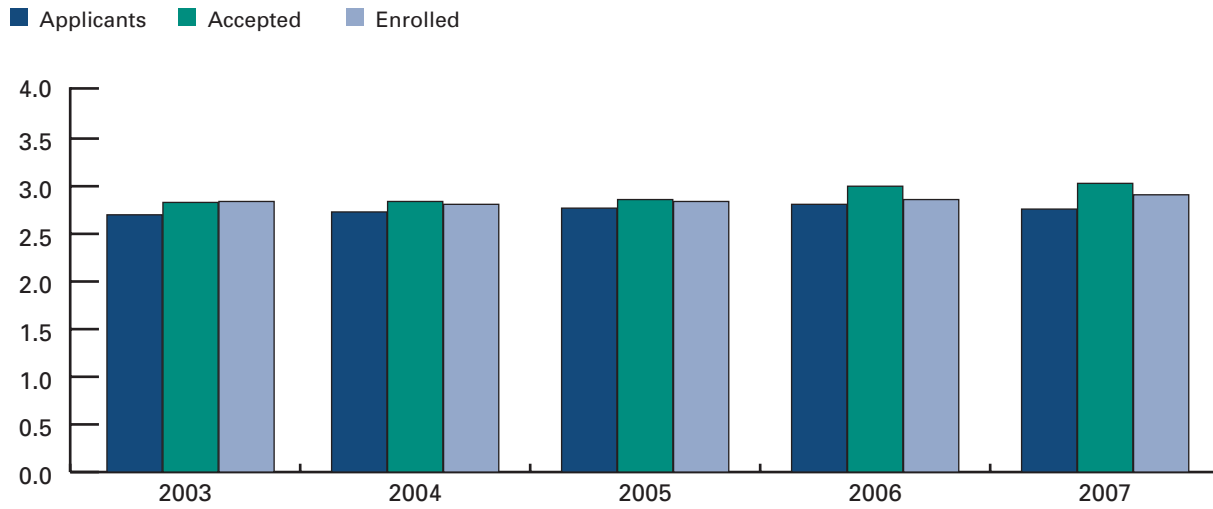


Percent of Freshman Applicants, Accepted, and Enrolled Who are Not White

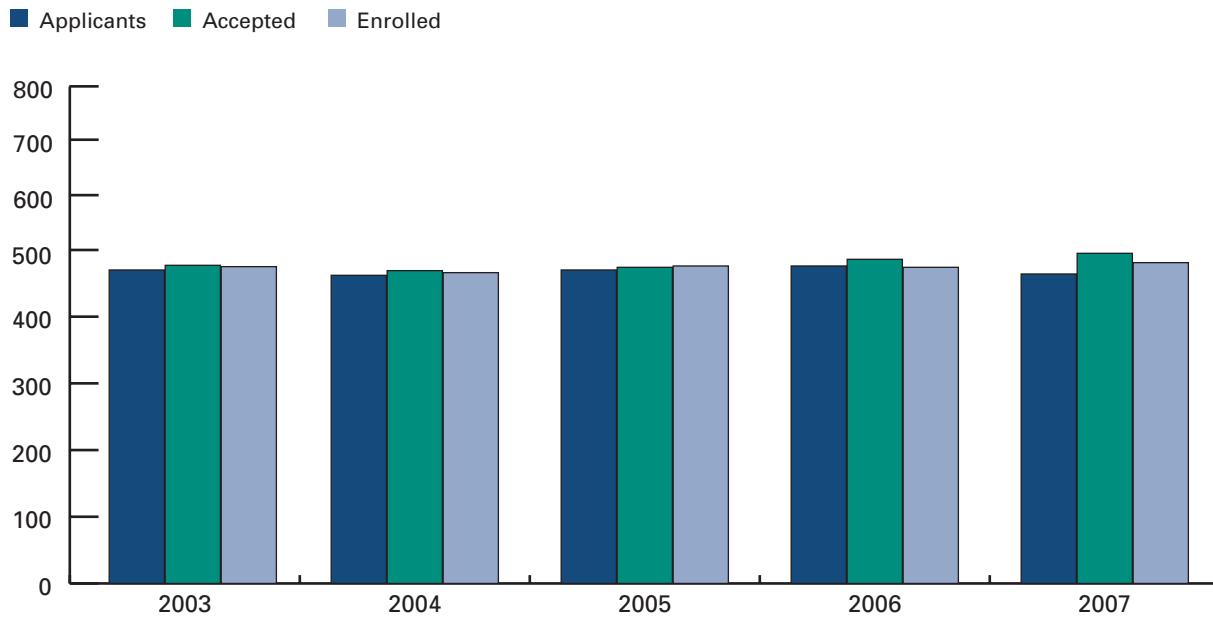


FRESHMAN ADMISSIONS: FALL 2003 — 2007

Average High School GPA of Applicants, Accepted, and Enrolled Freshmen

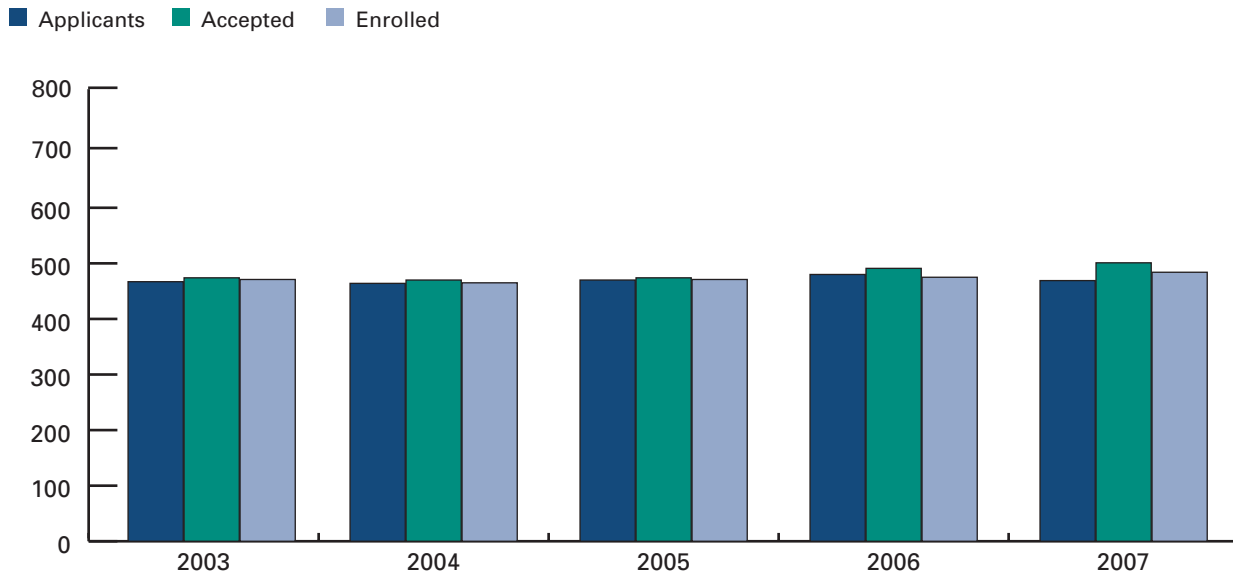


Average Verbal SAT of Applicants, Accepted, and Enrolled Freshmen

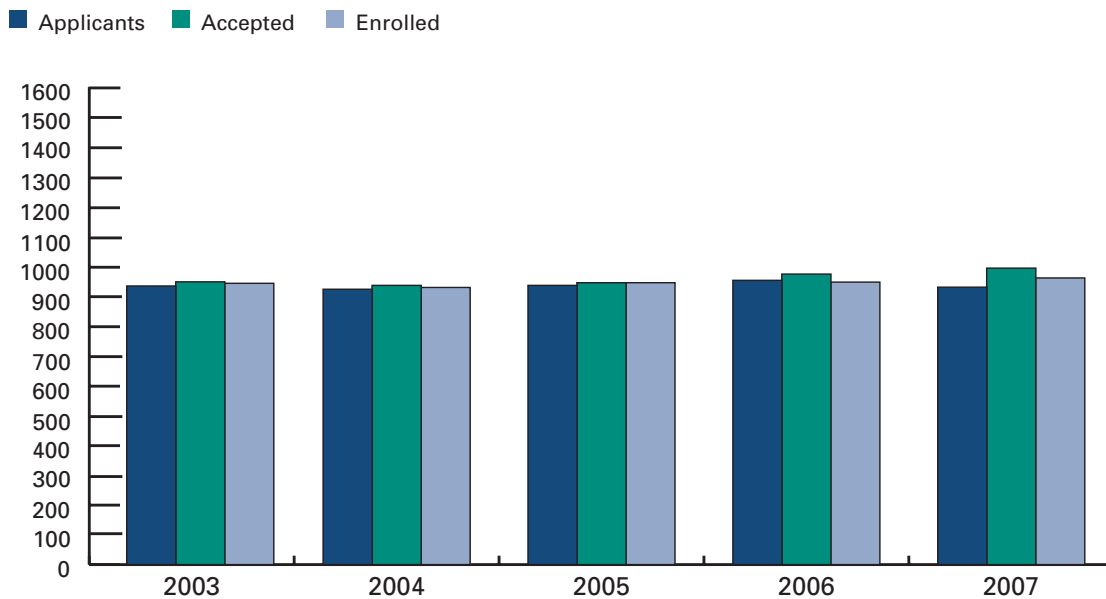


FRESHMAN ADMISSIONS: FALL 2003 — 2007

Average Math SAT of Applicants, Accepted, and Enrolled Freshmen



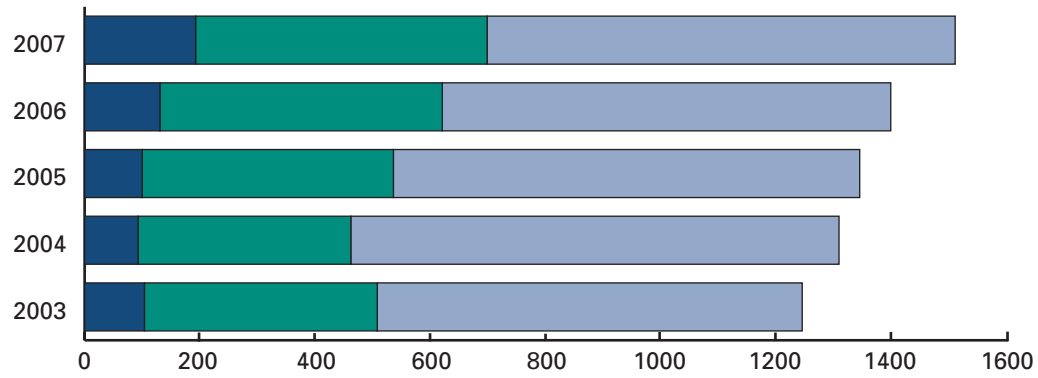
Average Combined SAT of Applicants, Accepted, and Enrolled Freshmen



TRANSFER ADMISSIONS: FALL 2003 — 2007

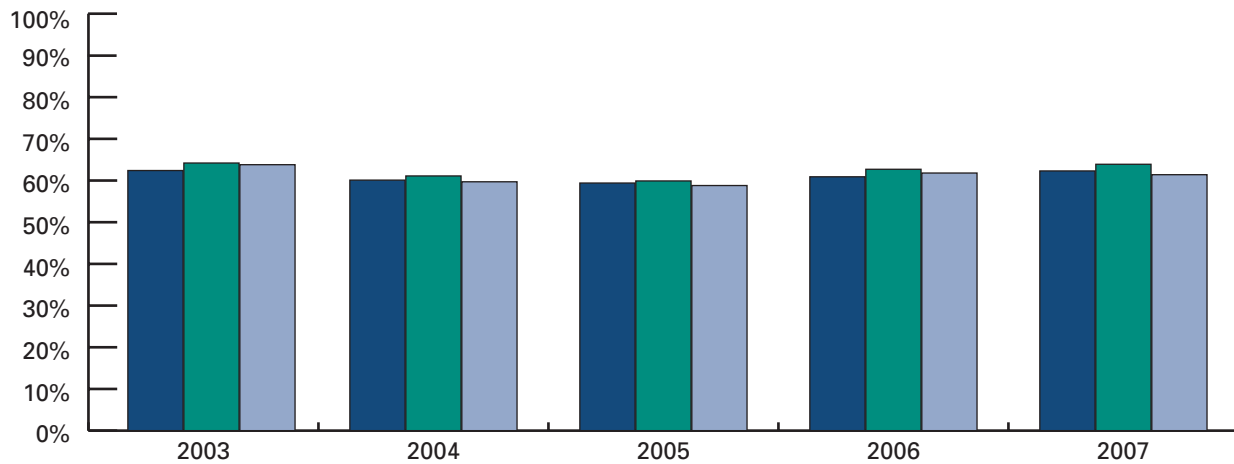
Transfer Applications Fall

■ Not Accepted ■ Accepted ■ Accepted Enrolled



Female as a Percent of Transfer Applicants, Accepted, and Enrolled

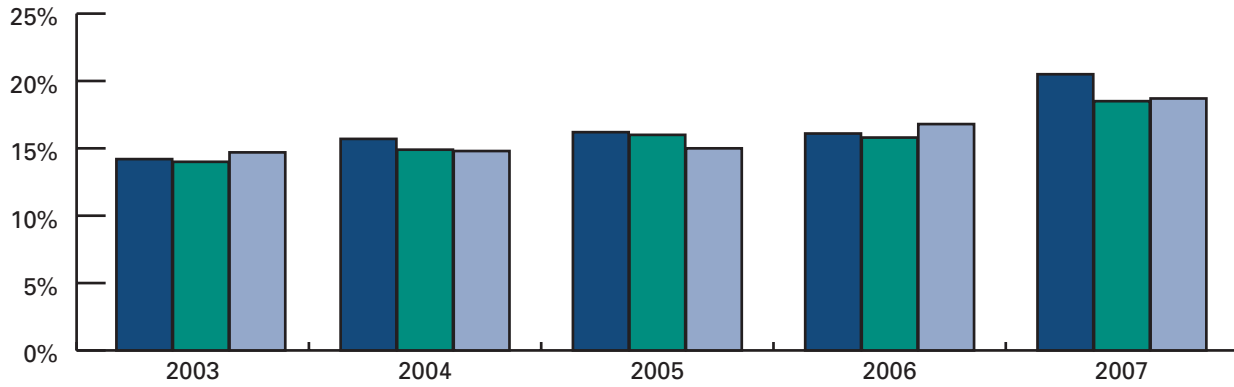
■ Applied ■ Accepted ■ Enrolled



TRANSFER ADMISSIONS: FALL 2003 — 2007

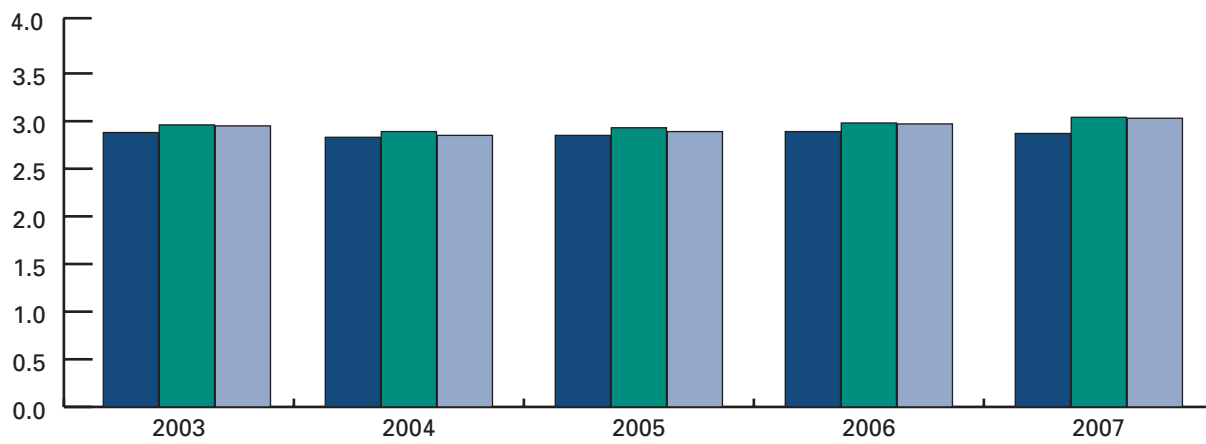
Percent of Transfer Applicants, Accepted, and Enrolled who are Not White

■ Applied ■ Accepted ■ Enrolled



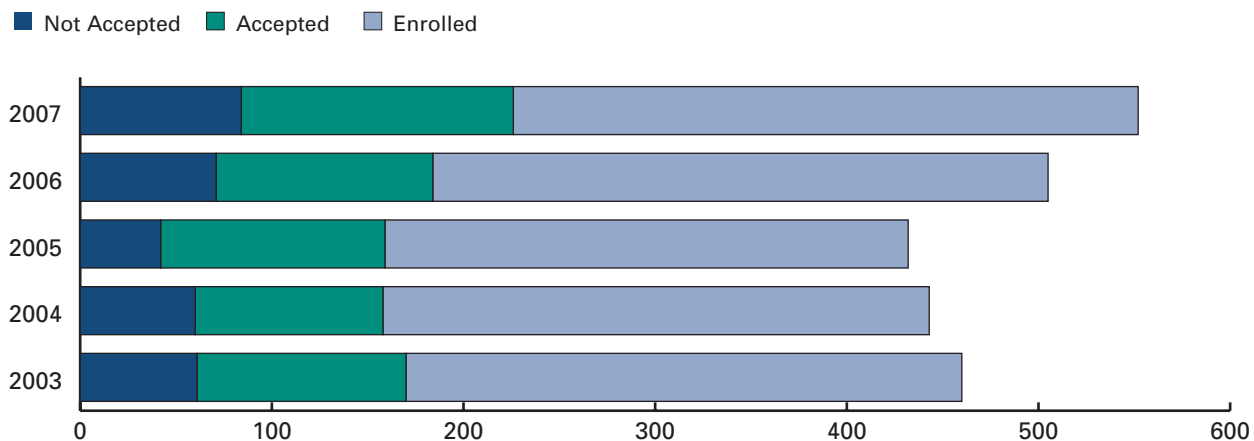
Average Transfer GPA of Applicants, Accepted, and Enrolled

■ Applied ■ Accepted ■ Enrolled

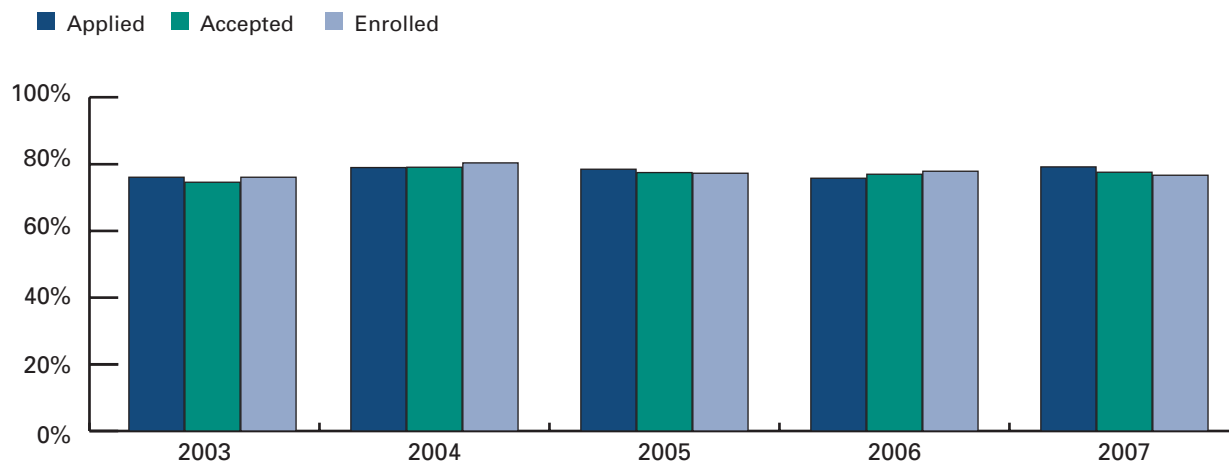


GRADUATE ADMISSIONS: FALL 2003 — 2007

Graduate Applications Fall



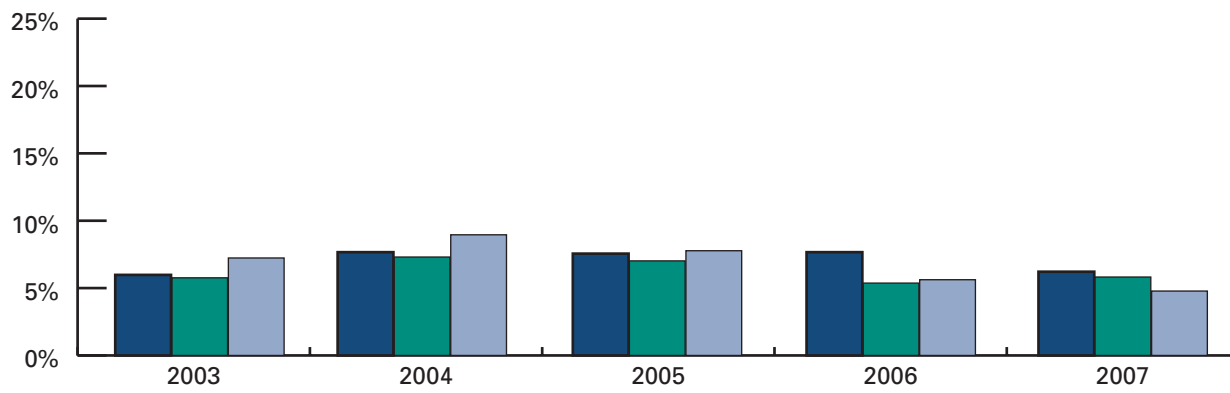
Female as a Percent of Graduate Applicants, Accepted, and Enrolled



GRADUATE ADMISSIONS: FALL 2003 — 2007

Percent of Graduate Applicants, Accepted, and Enrolled who are Not White

■ Applied ■ Accepted ■ Enrolled



admissions

Fall Admissions > > >
2003-2007
Tables



FRESHMAN ADMISSIONS: FALL 2003 — 2007

	2003	2004	2005	2006	2007
Applied	4018	3952	4818	4608	6890
Accepted	3313	3352	4314	3865	4118
Enrolled	1016	1058	1226	1136	1088
Acceptance Rate	82.5%	84.8%	89.5%	83.9%	59.8%
Yield	30.7%	31.6%	28.4%	29.4%	26.4%

APPLIED	2003	2004	2005	2006	2007
Average HS GPA	2.70	2.73	2.77	2.81	2.76
Average SAT					
Math	467	464	470	480	469
Verbal	470	462	470	476	464
Combined	937	926	939	956	933

ACCEPTED	2003	2004	2005	2006	2007
Average HS GPA	2.83	2.84	2.86	3.00	3.03
Average SAT					
Math	474	470	474	491	501
Verbal	477	469	474	486	495
Combined	951	939	948	977	997

ENROLLED	2003	2004	2005	2006	2007
Average HS GPA	2.84	2.81	2.84	2.86	2.91
Average SAT					
Math	471	465	471	475	484
Verbal	475	466	476	474	481
Combined	946	932	948	950	964

FRESHMAN ADMISSIONS : FALL 2003 — 2007
GENDER

FEMALE	2003	2004	2005	2006	2007
Applied	2556	2564	3215	2952	4410
Accepted	2174	2244	2927	2568	2675
Enrolled	636	681	808	717	654
Acceptance Rate	85.1%	87.5%	91.0%	87.0%	60.7%
Yield	29.3%	30.3%	27.6%	27.9%	24.4%

MALE	2003	2004	2005	2006	2007
Applied	1460	1387	1601	1656	2480
Accepted	1137	1108	1386	1297	1443
Enrolled	380	377	418	419	434
Acceptance Rate	77.9%	79.9%	86.6%	78.3%	58.2%
Yield	33.4%	34.0%	30.2%	32.3%	30.1%

% FEMALE	2003	2004	2005	2006	2007
Applied	63.6%	64.9%	66.8%	64.1%	64.0%
Accepted	65.7%	66.9%	67.9%	66.4%	65.0%
Enrolled	62.6%	64.4%	65.9%	63.1%	60.1%

Gender counts may not add to totals on previous page due to students who did not identify gender.

FRESHMAN ADMISSIONS: FALL 2003 — 2007
RACE

	2003	2004	2005	2006	2007
Applied					
Non Resident Alien	40	57	72	60	73
Black	290	330	447	519	846
American Indian	23	9	14	10	32
Asian Pacific Islander	140	158	190	220	291
Hispanic	274	317	400	446	736
White	3191	3044	3637	3262	4698
Unknown	60	37	58	91	214
% Non-White*	18.6%	21.1%	22.4%	26.8%	28.9%
Accepted					
Non Resident Alien	35	48	62	43	56
Black	213	263	388	308	314
American Indian	22	8	13	6	19
Asian Pacific Islander	106	136	172	192	163
Hispanic	231	265	364	345	356
White	2660	2608	3266	2895	3103
Unknown	46	24	49	76	107
% Non-White*	17.7%	20.5%	22.3%	22.7%	21.5%
Enrolled					
Non Resident Alien	18	26	28	22	19
Black	65	93	85	105	110
American Indian	6	4	2	1	3
Asian Pacific Islander	23	35	43	39	27
Hispanic	71	86	94	102	104
White	819	811	957	845	793
Unknown	14	3	17	22	32
% Non-White*	16.8%	21.2%	19.0%	22.6%	23.5%

* % Non-White excludes Non-resident Alien Students and students with unknown race.

**NEW FRESHMEN ENROLLED FALL 2003 — 2007
TOP FIFTEEN FEEDER HIGH SCHOOLS AND RANK ANNUALLY**

	2003	2004	2005	2006	2007
PEABODY HIGH SCHOOL	1	1	1	1	1
LYNN CLASSICAL HIGH SCHOOL	3	6	3	3	2
LYNN ENGLISH HIGH SCHOOL	14	2	2	4	3
SALEM HIGH SCHOOL	2	3	3	2	4
GLOUCESTER HIGH SCHOOL	4	5	15	8	5
SAUGUS HIGH SCHOOL	5	4	5	8	6
BISHOP FENWICK HIGH SCHOOL	9	6	11	11	7
BEVERLY HIGH SCHOOL	7	12	14	8	11
REVERE HIGH SCHOOL		8	11	7	6
EVERETT HIGH SCHOOL	11		9	4	9
DANVERS HIGH SCHOOL	5	8		13	12
MALDEN HIGH SCHOOL			9	6	8
TRITON REGIONAL HIGH SCHOOL		14	15		10
MEDFORD HIGH SCHOOL		11	6	11	
WAKEFIELD HIGH SCHOOL			7		13
LOWELL HIGH SCHOOL		10			14
SAINT MARY REGIONAL HIGH SCHOOL	11				14
LAWRENCE HIGH SCHOOL	15		8		
POPE JOHN XXIII CENTRAL HIGH SCHOOL	15		13		
MALDEN CATHOLIC HIGH SCHOOL	9	14			
MELROSE HIGH SCHOOL				13	
METHUEN HIGH SCHOOL				13	
READING MEMORIAL HIGH SCHOOL				13	
CENTRAL CATHOLIC HIGH SCHOOL		12			
EAST BOSTON HIGH SCHOOL		14			
WOBURN HIGH SCHOOL	7				
SAVIO PREPARATORY HIGH SCHOOL	11				

Rankings based on number of admitted, enrolled students. High schools that sent the same number of students in a given year are given the same rank, ranking resumes at the next change in enrollment. If the last X schools sent the same number of students, each will have the same rank which may be lower than 15 depending on previous ties.

**NEW FRESHMEN ENROLLED FALL 2003 — 2007
MAJORS**

	2003	2004	2005	2006	2007
ART	28	14	16	18	32
BIOLOGY	52	56	76	60	68
BUSINESS ADMINISTRATION	143	170	181	167	170
CARTOGRAPHY	2	4	4	3	1
CHEMISTRY	4	7	6	9	9
COMMUNICATIONS	46	34	50	45	38
COMPUTER SCIENCE	12	23	13	24	21
CRIMINAL JUSTICE	89	78	98	79	67
ECONOMICS		2		2	5
EDUCATION	115	99	120	116	93
ENGLISH	24	22	27	21	17
GEOGRAPHY	1	3	6		1
GEOLOGICAL SCIENCES	3		1	3	3
HISTORY	17	17	19	26	11
LIBERAL STUDIES	1	19	15	15	15
MATH	12	4	5	14	8
MUSIC			15	16	16
NURSING	112	85	92	98	110
POLITICAL SCIENCE	9	12	8	8	7
PSYCHOLOGY	35	54	67	55	56
SOCIAL WORK	17	17	19	21	18
SOCIOLOGY	3	4	11	10	10
SPANISH	2	1	4	4	2
SPORT, FITNESS & LEISURE STUDIES	36	32	43	59	40
THEATRE	37	34	50	34	35
UNDECLARED	216	267	280	229	235

TRANSFER ADMISSIONS: FALL 2003 — 2007

	2003	2004	2005	2006	2007
Applied	1248	1312	1348	1402	1514
Accepted	1144	1219	1248	1271	1321
Enrolled	739	849	811	780	814
Acceptance Rate	91.7%	92.9%	92.6%	90.7%	87.3%
Yield	64.6%	69.6%	65.0%	61.4%	61.6%

APPLIED	2003	2004	2005	2006	2007
Avg Transfer GPA	2.88	2.83	2.85	2.89	2.87

ACCEPTED	2003	2004	2005	2006	2007
Avg Transfer GPA	2.96	2.89	2.93	2.98	3.04

ENROLLED	2003	2004	2005	2006	2007
Avg Transfer GPA	2.95	2.85	2.89	2.97	3.03

TRANSFER ADMISSIONS: FALL 2003 — 2007
GENDER

FEMALE	2003	2004	2005	2006	2007
Applied	778	789	800	854	943
Accepted	734	745	747	797	844
Enrolled	478	507	476	482	500
Acceptance Rate	94.3%	94.4%	93.4%	93.3%	89.5%
Yield	65.1%	68.1%	63.7%	60.5%	59.2%

MALE	2003	2004	2005	2006	2007
Applied	469	523	546	548	571
Accepted	409	474	500	474	477
Enrolled	271	342	334	298	314
Acceptance Rate	87.2%	90.6%	91.6%	86.5%	83.5%
Yield	66.3%	72.2%	66.8%	62.9%	65.8%

% FEMALE	2003	2004	2005	2006	2007
Applied	62.4%	60.1%	59.4%	60.9%	62.3%
Accepted	64.2%	61.1%	59.9%	62.7%	63.9%
Enrolled	63.8%	59.7%	58.8%	61.8%	61.4%

Gender counts may not add to totals on previous page due to students who did not identify gender.

TRANSFER ADMISSIONS: FALL 2003 — 2007
RACE

	2003	2004	2005	2006	2007
Applied					
Non Resident Alien	62	54	53	55	54
Black	65	96	104	92	139
American Indian	6	7	4	6	5
Asian Pacific Islander	30	33	37	36	39
Hispanic	61	58	58	76	102
White	978	1045	1053	1093	1104
Unknown	46	19	39	44	71
% Non-White*	14.2%	15.7%	16.2%	16.1%	20.5%
Accepted					
Non Resident Alien	52	51	51	50	47
Black	58	79	95	76	109
American Indian	5	7	4	6	4
Asian Pacific Islander	27	29	36	35	28
Hispanic	57	56	51	69	82
White	905	978	974	993	985
Unknown	40	19	37	42	66
% Non-White*	14.0%	14.9%	16.0%	15.8%	18.5%
Enrolled					
Non Resident Alien	31	37	30	37	35
Black	37	55	59	43	66
American Indian	2	4	3	4	3
Asian Pacific Islander	16	20	23	25	15
Hispanic	46	39	28	48	55
White	585	682	640	596	603
Unknown	22	12	28	27	37
% Non-White*	14.7%	14.8%	15.0%	16.8%	18.7%

* % Non-White excludes Non-resident Alien Students and students with unknown race.

NEW TRANSFERS ENROLLED FALL 2003 — 2007
TOP TEN FEEDER COLLEGES AND # OF STUDENTS ENROLLED

	2003	2004	2005	2006	2007
NORTH SHORE CMTY COLLEGE	157	154	201	179	189
MIDDLESEX CMTY COLLEGE	64	61	34	53	56
NORTHERN ESSEX CMTY COLLEGE	35	54	35	45	43
BUNKER HILL CMTY COLLEGE	35	35	37	30	33
UNIV MASS LOWELL	12	12	10	15	15
UNIV MASS AMHERST	19	10	19	16	15
QUINCY COLLEGE	11	11	10	16	15
MARIAN COURT COLLEGE		17	21	16	18
MASS BAY CMTY COLLEGE			11	11	14
UNIV MASS BOSTON		15	13	11	
NORTHEASTERN UNIVERSITY	12	12	13		
WESTFIELD STATE COLLEGE	11	10			
SUFFOLK UNIVERSITY					12
MERRIMACK COLLEGE				11	
UNIV MASS DARTMOUTH				13	
BRIDGEWATER STATE COLLEGE			10		
ROXBURY CMTY COLLEGE	9				
# of Enrolling Transfers from Top Ten	365	391	414	416	410
% of Total Enrolled Transfers from Top Ten	49%	46%	51%	53%	50%
Total Count of Feeder Colleges	162	164	151	161	170

**NEW TRANSFERS ENROLLED FALL 2003 — 2007
MAJORS**

	2003	2004	2005	2006	2007
ART	20	17	19	19	22
BIOLOGY	55	30	49	44	47
BUSINESS ADMINISTRATION	137	178	168	156	142
CARTOGRAPHY	3	1			1
CHEMISTRY	8	8	5	5	9
COMMUNICATIONS	42	32	43	33	27
COMPUTER SCIENCE	22	21	12	10	8
CRIMINAL JUSTICE	60	85	72	70	74
ECONOMICS	3	4	2	5	4
EDUCATION	88	92	78	95	77
ENGLISH	16	25	14	22	28
FIRE SCIENCE	2	8	9	6	6
GEOGRAPHY	3	16	7	4	5
GEOLOGICAL SCIENCES	1	4	4	1	3
HISTORY	15	23	18	26	21
LIBERAL STUDIES		9	6	7	25
MATH	9	9	11	5	6
MUSIC		1	4	4	6
NURSING	52	58	84	65	70
OCCUPATIONAL THERAPY	7	8	5	4	11
POLITICAL SCIENCE	10	11	7	11	7
PSYCHOLOGY	42	48	52	44	41
SOCIAL WORK	14	19	23	26	31
SOCIOLOGY	19	13	15	19	13
SPANISH	2	5	5	6	3
SPORT, FITNESS & LEISURE STUDIES	29	37	28	29	35
THEATRE	12	10	8	11	18
UNDECLARED	68	77	63	53	74

GRADUATE ADMISSIONS: FALL 2003 — 2007

	2003	2004	2005	2006	2007
Applied	460	443	432	505	552
Accepted	399	383	390	434	468
Enrolled	290	285	273	321	326
Acceptance Rate	86.7%	86.5%	90.3%	85.9%	84.8%
Yield	72.7%	74.4%	70.7%	74.0%	69.7%

GRADUATE ADMISSIONS: FALL 2003 — 2007 GENDER

FEMALE	2003	2004	2005	2006	2007
Applied	348	350	336	383	437
Accepted	296	303	299	334	363
Enrolled	220	229	208	250	250
Acceptance Rate	85.1%	86.6%	89.0%	87.2%	83.1%
Yield	74.3%	75.6%	69.6%	74.9%	68.9%

MALE	2003	2004	2005	2006	2007
Applied	109	93	92	122	115
Accepted	101	80	87	100	105
Enrolled	69	56	61	71	76
Acceptance Rate	92.7%	86.0%	94.6%	82.0%	91.3%
Yield	68.3%	70.0%	70.1%	71.0%	72.4%

% FEMALE	2003	2004	2005	2006	2007
Applied	76.1%	79.0%	78.5%	75.8%	79.2%
Accepted	74.6%	79.1%	77.5%	77.0%	77.6%
Enrolled	76.1%	80.4%	77.3%	77.9%	76.7%

Gender counts may not add to totals on previous page due to students who did not identify gender.

GRADUATE ADMISSIONS: FALL 2003 — 2007
RACE

	2003	2004	2005	2006	2007
Applied					
Non Resident Alien	9	9	10	21	13
Black	7	13	11	10	10
American Indian	1			1	1
Asian Pacific Islander	6	7	4	6	3
Hispanic	11	12	14	17	15
White	385	387	355	410	462
Unknown	41	15	38	40	48
% Non-White*	6.1%	7.6%	7.6%	7.7%	5.9%
Accepted					
Non Resident Alien	9	9	9	17	13
Black	7	13	8	6	5
American Indian	1			1	1
Asian Pacific Islander	5	6	4	4	3
Hispanic	8	8	13	9	14
White	331	335	320	357	389
Unknown	38	12	36	40	43
% Non-White*	6.0%	7.5%	7.2%	5.3%	5.6%
Enrolled					
Non Resident Alien	5	7	5	12	9
Black	7	11	6	4	
American Indian	1			1	1
Asian Pacific Islander	5	5	2	4	3
Hispanic	6	8	11	6	10
White	238	245	225	261	271
Unknown	28	9	24	33	32
% Non-White*	7.4%	8.9%	7.8%	5.4%	4.9%

* % Non-White excludes Non-resident Alien Students and students with unknown race.

NEW GRADUATE STUDENTS ENROLLED: FALL 2003 — 2007
GRADUATE PROGRAMS

	2003	2004	2005	2006	2007
ART - MAT	2	1	2	2	1
BILINGUAL EDUCATION - MED	1				
BIOLOGY - MAT			1	1	
BUSINESS - MBA	10	20	12	11	11
CHEMISTRY - MAT			1		
COUNSELING & PSYCHOLOGICAL SERVICES - MS	5	11	13	17	12
CRIMINAL JUSTICE - MS					6
EARLY CHILDHOOD EDUCATION - MED	4	5	8	3	4
EDUCATIONAL LEADERSHIP - MED	8	2	3	2	1
ELEMENTARY EDUCATION - MED	27	32	25	15	20
ENGLISH - MA	8	7	4	5	11
ENGLISH - MA/MAT			2	2	1
ENGLISH - MAT	6	2	5	4	2
ENGLISH AS A SECOND LANGUAGE - MAT	7		1	2	5
FIELD BASED - MED	6			33	
GENERAL SCIENCE - MAT				2	
GEO-INFORMATION SCIENCE - MS	1	1	1	2	1
HIGHER EDUCATION IN STUDENT AFFAIRS - MED		17	3	15	15
HISTORY - MA	3	6	11	4	9
HISTORY - MAT					6
LIBRARY MEDIA STUDIES - MED	3	2	6	3	22
MATHEMATICS - MAT		2	4	3	2
MATHEMATICS - MS	1	1		2	3
MIDDLE SCHOOL - MED	19	9	6	6	7
MSN/MBA	1		1		
NURSING - MSN	5	2	11	8	5
OCCUPATIONAL THERAPY - BS/MS				4	11
PHYSICAL EDUCATION - MED	2	2	6	4	4
READING - MED	11	11	13	9	7
SCHOOL COUNSELING -MED	13	16	12	6	6
SECONDARY EDUCATION - MED	19	19	8	10	3
SOCIAL WORK - MSW	76	84	65	83	77
SPANISH - MAT		6	2	3	8
SPECIAL EDUCATION - MED	42	22	20	25	31
TECHNOLOGY IN EDUCATION - MED	6	1	2	2	3
CAGS - EDUCATION	3	3	10	4	10
ADVANCED PROFESSIONAL STUDIES - COUNSELING	1	1	1	1	2
CERTIFICATES/LICENSURE PROGRAMS			14	28	20

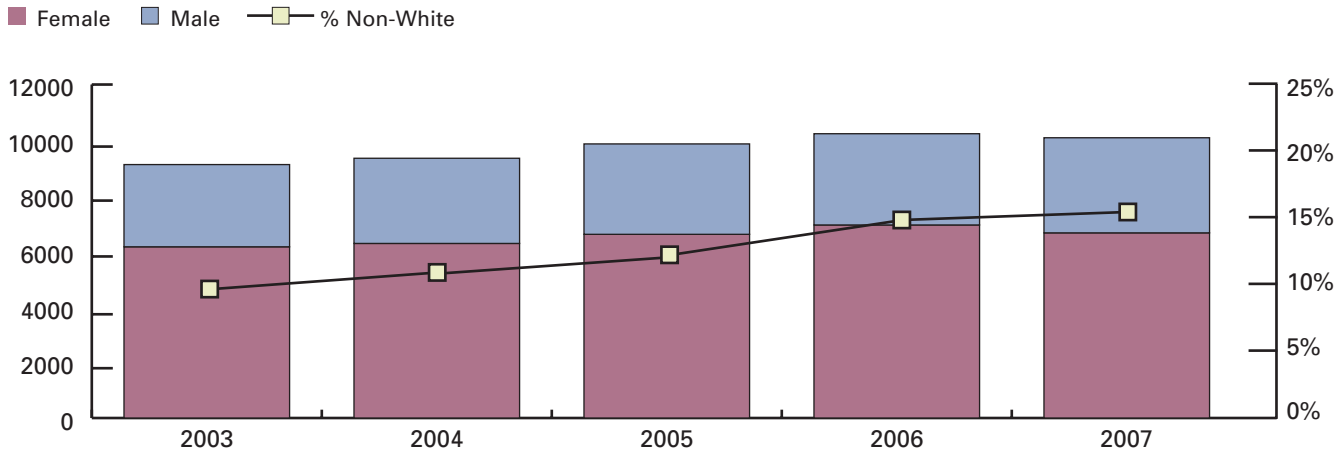
enrollment

Enrollment > > >
At a Glance
2003-2007

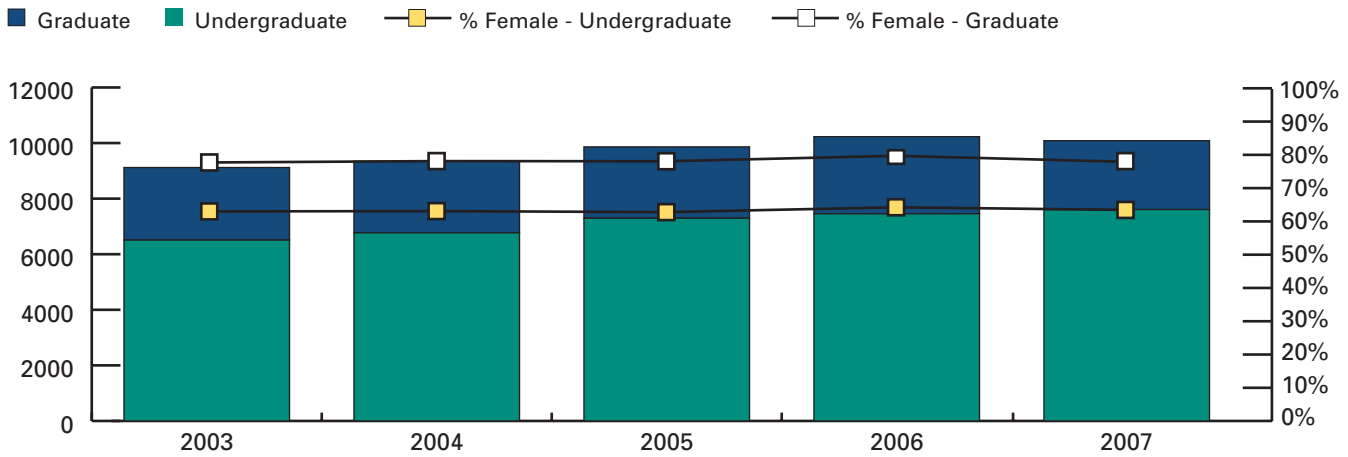


ENROLLMENT: FALL 2003 — 2007

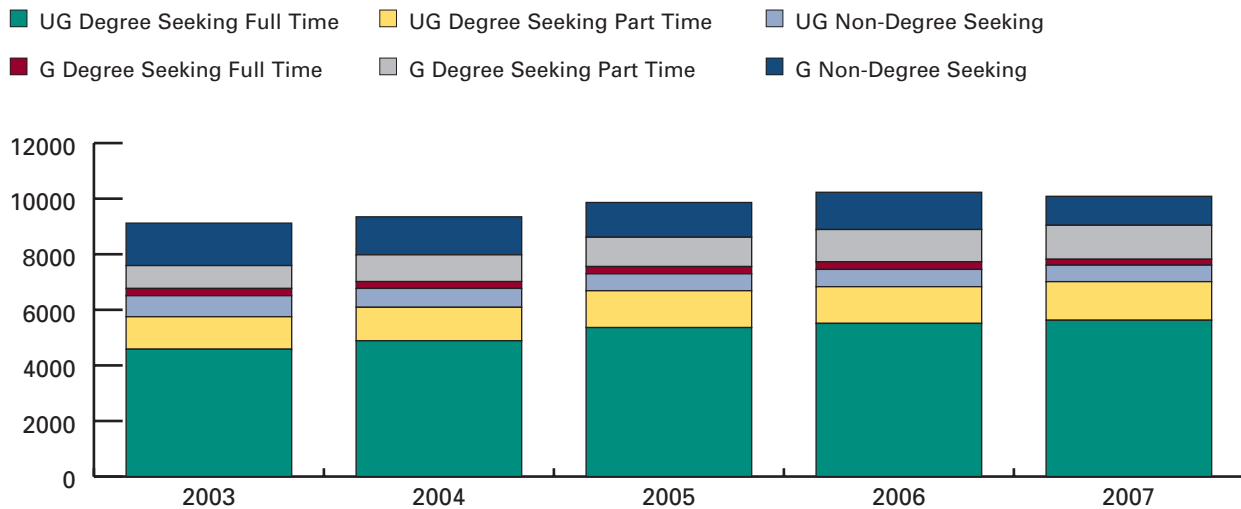
All College Headcount Fall Enrollment Demographics



All College Headcount with Percent Female by Undergraduate/Graduate

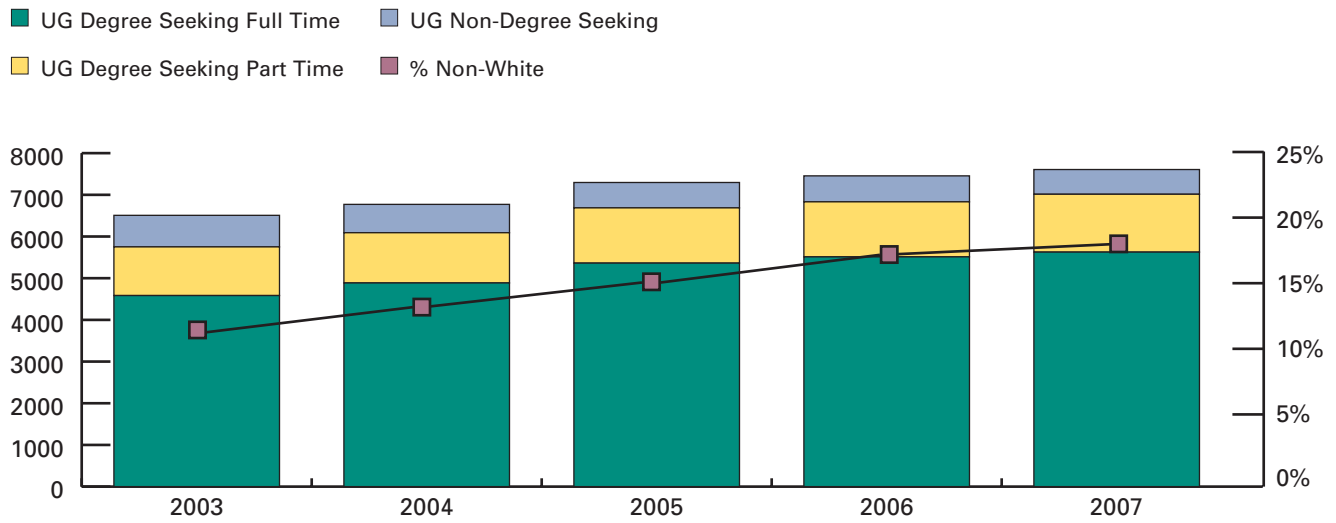


All College Headcount by Level and Attendance Status

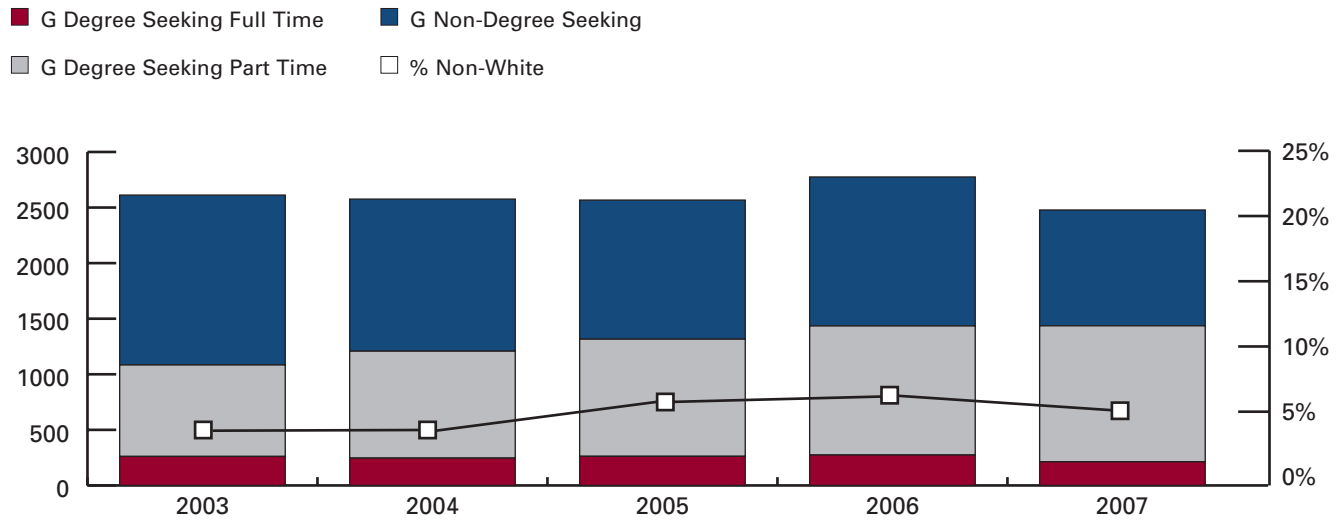


ENROLLMENT: FALL 2003 — 2007

Undergraduate Headcount by Attendance Status and Percent Non-White



Graduate Headcount by Attendance Status and Percent Non-White



LEFT BLANK INTENTIONALLY

enrollment

Enrollment > > >
2003-2007
Tables



**ALL COLLEGE FALL HEADCOUNT 2003—2007
BY GENDER AND RACE**

	2003	2004	2005	2006	2007
Female					
Non Resident Alien	194	212	214	214	191
Black	172	222	282	353	381
American Indian	16	18	16	23	22
Asian Pacific Islander	91	116	150	167	139
Hispanic	200	246	306	348	351
White	4618	4944	4839	4917	5002
Unknown	870	524	803	925	577
Female Total	6161	6282	6610	6947	6663
% Non-White*	9.4%	10.9%	13.5%	15.3%	15.1%
% Female	67.6%	67.2%	67.0%	67.9%	66.1%
Male					
Non Resident Alien	151	172	166	175	175
Black	109	147	171	185	215
American Indian	20	12	13	11	8
Asian Pacific Islander	34	36	52	54	69
Hispanic	89	109	126	140	175
White	2255	2394	2459	2468	2584
Unknown	301	195	266	250	196
Male Total	2959	3065	3253	3283	3422
% Non-White*	10.1%	11.3%	12.8%	13.6%	15.3%
% Male	32.4%	32.8%	33.0%	32.1%	33.9%
Total					
Non Resident Alien	345	384	380	389	366
Black	281	369	453	538	596
American Indian	36	30	29	34	30
Asian Pacific Islander	125	152	202	221	208
Hispanic	289	355	432	488	526
White	6873	7338	7298	7385	7586
Unknown	1171	719	1069	1175	773
Total	9120	9347	9863	10230	10085
% Non-White*	9.6%	11.0%	13.3%	14.8%	15.2%

* % Non-White excludes Non-resident Alien Students and students with unknown race.

**FALL UNDERGRADUATE HEADCOUNT 2003—2007
BY GENDER AND RACE**

	2003	2004	2005	2006	2007
Female					
Non Resident Alien	176	184	178	177	160
Black	157	200	254	320	354
American Indian	12	15	14	18	18
Asian Pacific Islander	82	106	137	153	125
Hispanic	176	217	262	303	314
White	3230	3380	3558	3506	3568
Unknown	314	179	219	254	203
Female Total	4147	4281	4622	4731	4742
% Non-White*	11.7%	13.7%	15.8%	18.5%	18.5%
% Female	63.7%	63.2%	63.3%	63.5%	62.3%
Male					
Non Resident Alien	128	152	150	159	159
Black	100	137	164	177	210
American Indian	19	12	13	9	8
Asian Pacific Islander	33	34	46	49	62
Hispanic	80	107	121	133	167
White	1846	1944	2066	2077	2148
Unknown	155	104	114	120	111
Male Total	2361	2490	2674	2724	2865
% Non-White*	11.2%	13.0%	14.3%	15.1%	17.2%
% Male	36.3%	36.8%	36.7%	36.5%	37.7%
Total					
Non Resident Alien	304	336	328	336	319
Black	257	337	418	497	564
American Indian	31	27	27	27	26
Asian Pacific Islander	115	140	183	202	187
Hispanic	256	324	383	436	481
White	5076	5324	5624	5583	5716
Unknown	469	283	333	374	314
Total	6508	6771	7296	7455	7607
% Non-White*	11.5%	13.5%	15.2%	17.2%	18.0%

* % Non-White excludes Non-resident Alien Students and students with unknown race.

**FALL UNDERGRADUATE HEADCOUNT 2003—2007
TOTAL DEGREE SEEKING**

	2003	2004	2005	2006	2007
Female					
Non Resident Alien	138	139	148	147	142
Black	153	192	250	311	343
American Indian	11	15	14	17	18
Asian Pacific Islander	81	102	132	151	122
Hispanic	164	202	252	296	307
White	2928	3112	3342	3287	3328
Unknown	204	131	136	162	148
Female Total	3679	3893	4274	4371	4408
% Non-White*	12.3%	14.1%	16.2%	19.1%	19.2%
% Female	64.0%	63.9%	63.9%	64.0%	62.8%
% of Female Undergraduates	88.7%	90.9%	92.5%	92.4%	93.0%
Male					
Non Resident Alien	102	119	126	131	134
Black	89	127	159	169	199
American Indian	18	12	13	8	7
Asian Pacific Islander	32	33	45	48	61
Hispanic	74	103	114	128	159
White	1671	1740	1897	1909	1960
Unknown	86	64	59	68	86
Male Total	2072	2198	2413	2461	2606
% Non-White*	11.3%	13.6%	14.9%	15.6%	17.9%
% Male	36.0%	36.1%	36.1%	36.0%	37.2%
% of Male Undergraduates	87.8%	88.3%	90.2%	90.3%	91.0%
Total					
Non Resident Alien	240	258	274	278	276
Black	242	319	409	480	542
American Indian	29	27	27	25	25
Asian Pacific Islander	113	135	177	199	183
Hispanic	238	305	366	424	466
White	4599	4852	5239	5196	5288
Unknown	290	195	195	230	234
Total	5751	6091	6687	6832	7014
% Non-White*	11.9%	13.9%	15.7%	17.8%	18.7%
% of Undergraduate Headcount	88.4%	90.0%	91.7%	91.6%	92.2%

* % Non-White excludes Non-resident Alien Students and students with unknown race.

FALL UNDERGRADUATE HEADCOUNT 2003—2007
FULL TIME DEGREE SEEKING

	2003	2004	2005	2006	2007
Female					
Non Resident Alien	125	110	117	122	107
Black	116	159	206	248	253
American Indian	9	11	12	9	8
Asian Pacific Islander	65	89	109	118	96
Hispanic	130	166	201	237	247
White	2323	2439	2658	2615	2667
Unknown	140	83	78	103	102
Female Total	2908	3057	3381	3452	3480
% Non-White*	12.1%	14.8%	16.6%	19.0%	18.5%
% Female	63.4%	62.6%	63.1%	62.6%	61.9%
% of Female Degree Seeking Undergraduates	79.0%	78.5%	79.1%	79.0%	78.9%
% of Female Undergraduates	70.1%	71.4%	73.2%	73.0%	73.4%
Male					
Non Resident Alien	95	107	111	116	113
Black	74	107	128	143	154
American Indian	16	10	8	5	4
Asian Pacific Islander	26	30	39	39	50
Hispanic	56	84	94	120	135
White	1349	1450	1557	1590	1627
Unknown	60	41	44	47	63
Male Total	1676	1829	1981	2060	2146
% Non-White*	11.3%	13.7%	14.7%	16.2%	17.4%
% Male	36.6%	37.4%	36.9%	37.4%	38.1%
% of Male Degree Seeking Undergraduates	80.9%	83.2%	82.1%	83.7%	82.3%
% of Male Undergraduates	71.0%	73.5%	74.1%	75.6%	74.9%
Total					
Non Resident Alien	220	217	228	238	220
Black	190	266	334	391	407
American Indian	25	21	20	14	12
Asian Pacific Islander	91	119	148	157	146
Hispanic	186	250	295	357	382
White	3672	3889	4215	4205	4294
Unknown	200	124	122	150	165
Total	4584	4886	5362	5512	5626
% Non-White*	11.8%	14.4%	15.9%	17.9%	18.1%
% of Degree Seeking Undergraduates	79.7%	80.2%	80.2%	80.7%	80.2%
% of Undergraduate Headcount	70.4%	72.2%	73.5%	73.9%	74.0%

* % Non-White excludes Non-resident Alien Students and students with unknown race.

FALL UNDERGRADUATE HEADCOUNT 2003—2007
PART TIME DEGREE SEEKING

	2003	2004	2005	2006	2007
Female					
Non Resident Alien	13	29	31	25	35
Black	37	33	44	63	90
American Indian	2	4	2	8	10
Asian Pacific Islander	16	13	23	33	26
Hispanic	34	36	51	59	60
White	605	673	684	672	661
Unknown	64	48	58	59	46
Female Total	771	836	893	919	928
% Non-White*	12.8%	11.3%	14.9%	19.5%	22.0%
% Female	66.1%	69.4%	67.4%	69.6%	66.9%
% of Female Degree Seeking Undergraduates	21.0%	21.5%	20.9%	21.0%	21.1%
% of Female Undergraduates	18.6%	19.5%	19.3%	19.4%	19.6%
Male					
Non Resident Alien	7	12	15	15	21
Black	15	20	31	26	45
American Indian	2	2	5	3	3
Asian Pacific Islander	6	3	6	9	11
Hispanic	18	19	20	8	24
White	322	290	340	319	333
Unknown	26	23	15	21	23
Male Total	396	369	432	401	460
% Non-White*	11.3%	13.2%	15.4%	12.6%	20.0%
% Male	33.9%	30.6%	32.6%	30.4%	33.1%
% of Male Degree Seeking Undergraduates	19.1%	16.8%	17.9%	16.3%	17.7%
% of Male Undergraduates	16.8%	14.8%	16.2%	14.7%	16.1%
Total					
Non Resident Alien	20	41	46	40	56
Black	52	53	75	89	135
American Indian	4	6	7	11	13
Asian Pacific Islander	22	16	29	42	37
Hispanic	52	55	71	67	84
White	927	963	1024	991	994
Unknown	90	71	73	80	69
Total	1167	1205	1325	1320	1388
% Non-White*	12.3%	11.9%	15.1%	17.4%	21.3%
% of Degree Seeking Undergraduates	20.3%	19.8%	19.8%	19.3%	19.8%
% of Undergraduate Headcount	17.9%	17.8%	18.2%	17.7%	18.2%

* % Non-White excludes Non-resident Alien Students and students with unknown race.

**FALL UNDERGRADUATE HEADCOUNT 2003—2007
NON-DEGREE SEEKING**

	2003	2004	2005	2006	2007
Female					
Non Resident Alien	38	45	30	30	18
Black	4	8	4	9	11
American Indian	1	0	0	1	0
Asian Pacific Islander	1	4	5	2	3
Hispanic	12	15	10	7	7
White	302	268	216	219	240
Unknown	110	48	83	92	55
Female Total	468	388	348	360	334
% Non-White*	5.6%	9.2%	8.1%	8.0%	8.0%
% Female	61.8%	57.1%	57.1%	57.8%	56.3%
% of Female Undergraduates	11.3%	9.1%	7.5%	7.6%	7.0%
Male					
Non Resident Alien	26	33	24	28	25
Black	11	10	5	8	11
American Indian	1	0	0	1	1
Asian Pacific Islander	1	1	1	1	1
Hispanic	6	4	7	5	8
White	175	204	169	168	188
Unknown	69	40	55	52	25
Male Total	289	292	261	263	259
% Non-White*	9.8%	6.8%	7.1%	8.2%	10.0%
% Male	38.2%	42.9%	42.9%	42.2%	43.7%
% of Male Undergraduates	12.2%	11.7%	9.8%	9.7%	9.0%
Total					
Non Resident Alien	64	78	54	58	43
Black	15	18	9	17	22
American Indian	2	0	0	2	1
Asian Pacific Islander	2	5	6	3	4
Hispanic	18	19	17	12	15
White	477	472	385	387	428
Unknown	179	88	138	144	80
Total	757	680	609	623	593
% Non-White*	7.2%	8.2%	7.7%	8.1%	8.9%
% of Undergraduate Headcount	11.6%	10.0%	8.3%	8.4%	7.8%

* % Non-White excludes Non-resident Alien Students and students with unknown race.

**FALL GRADUATE HEADCOUNT 2003—2007
BY GENDER AND RACE**

	2003	2004	2005	2006	2007
Female					
Non Resident Alien	18	28	36	37	31
Black	15	22	28	33	27
American Indian	4	3	2	5	4
Asian Pacific Islander	9	10	13	14	14
Hispanic	24	29	44	45	37
White	1388	1564	1281	1411	1434
Unknown	556	345	584	671	374
Female Total	2014	2001	1988	2216	1921
% Non-White*	3.6%	3.9%	6.4%	6.4%	5.4%
% Female	77.1%	77.7%	77.4%	79.9%	77.5%
Male					
Non Resident Alien	23	20	16	16	16
Black	9	10	7	8	5
American Indian	1	0	0	2	0
Asian Pacific Islander	1	2	6	5	7
Hispanic	9	2	5	7	8
White	409	450	393	391	436
Unknown	146	91	152	130	85
Male Total	598	575	579	559	557
% Non-White*	4.7%	3.0%	4.4%	5.3%	4.4%
% Male	22.9%	22.3%	22.6%	20.1%	22.5%
Total					
Non Resident Alien	41	48	52	53	47
Black	24	32	35	41	32
American Indian	5	3	2	7	4
Asian Pacific Islander	10	12	19	19	21
Hispanic	33	31	49	52	45
White	1797	2014	1674	1802	1870
Unknown	702	436	736	801	459
Total	2612	2576	2567	2775	2478
% Non-White*	3.9%	3.7%	5.9%	6.2%	5.2%

* % Non-White excludes Non-resident Alien Students and students with unknown race.

**FALL GRADUATE HEADCOUNT 2003—2007
TOTAL DEGREE SEEKING**

	2003	2004	2005	2006	2007
Female					
Non Resident Alien	8	16	23	26	22
Black	12	20	20	23	19
American Indian	2	2	2	3	2
Asian Pacific Islander	6	9	9	12	10
Hispanic	11	18	28	28	29
White	663	786	807	899	941
Unknown	112	72	122	142	85
Female Total	814	923	1011	1133	1108
% Non-White*	4.5%	5.9%	6.8%	6.8%	6.0%
% Female	75.1%	76.4%	76.8%	79.0%	77.2%
% of Female Graduate Students	40.4%	46.1%	50.9%	51.1%	57.7%
Male					
Non Resident Alien	11	13	10	12	9
Black	6	8	6	3	3
American Indian	0	0	0	0	0
Asian Pacific Islander	1	2	4	4	4
Hispanic	5	2	3	5	5
White	206	229	236	236	278
Unknown	41	31	46	42	29
Male Total	270	285	305	302	328
% Non-White*	5.5%	5.0%	5.2%	4.8%	4.1%
% Male	24.9%	23.6%	23.2%	21.0%	22.8%
% of Male Graduate Students	45.2%	49.6%	52.7%	54.0%	58.9%
Total					
Non Resident Alien	19	29	33	38	31
Black	18	28	26	26	22
American Indian	2	2	2	3	2
Asian Pacific Islander	7	11	13	16	14
Hispanic	16	20	31	33	34
White	869	1015	1043	1135	1219
Unknown	153	103	168	184	114
Total	1084	1208	1316	1435	1436
% Non-White*	4.7%	5.7%	6.5%	6.4%	5.6%
% of Graduate Headcount	41.5%	46.9%	51.3%	51.7%	57.9%

* % Non-White excludes Non-resident Alien Students and students with unknown race.

FALL GRADUATE HEADCOUNT 2003—2007
FULL TIME DEGREE SEEKING

	2003	2004	2005	2006	2007
Female					
Non Resident Alien	3	10	18	18	12
Black	2	7	5	12	4
American Indian	1	1	0	1	1
Asian Pacific Islander	2	4	4	2	2
Hispanic	1	3	8	4	6
White	178	155	151	160	134
Unknown	20	9	18	28	7
Female Total	207	189	204	225	166
% Non-White*	3.3%	8.8%	10.1%	10.6%	8.8%
% Female	79.3%	76.8%	77.9%	82.1%	77.9%
% of Female Degree Seeking Graduate Students	25.4%	20.5%	20.2%	19.9%	15.0%
% of Female Graduate Students	10.3%	9.4%	10.3%	10.2%	8.6%
Male					
Non Resident Alien	6	10	5	8	4
Black	0	4	3	2	1
American Indian	0	0	0	0	0
Asian Pacific Islander	0	0	2	2	0
Hispanic	1	1	0	0	0
White	43	39	39	32	39
Unknown	4	3	9	5	3
Male Total	54	57	58	49	47
% Non-White*	2.3%	11.4%	11.4%	11.1%	2.5%
% Male	20.7%	23.2%	22.1%	17.9%	22.1%
% of Male Degree Seeking Graduate Students	20.0%	20.0%	19.0%	16.2%	14.3%
% of Male Graduate Students	9.0%	9.9%	10.0%	8.8%	8.4%
Total					
Non Resident Alien	9	20	23	26	16
Black	2	11	8	14	5
American Indian	1	1	0	1	1
Asian Pacific Islander	2	4	6	4	2
Hispanic	2	4	8	4	6
White	221	194	190	192	173
Unknown	24	12	27	33	10
Total	261	246	262	274	213
% Non-White*	3.1%	9.3%	10.4%	10.7%	7.5%
% of Degree Seeking Graduate Students	24.1%	20.4%	19.9%	19.1%	14.8%
% of Graduate Headcount	10.0%	9.5%	10.2%	9.9%	8.6%

* % Non-White excludes Non-resident Alien Students and students with unknown race.

FALL GRADUATE HEADCOUNT 2003—2007
PART TIME DEGREE SEEKING

	2003	2004	2005	2006	2007
Female					
Non Resident Alien	5	6	5	8	10
Black	10	13	15	11	15
American Indian	1	1	2	2	1
Asian Pacific Islander	4	5	5	10	8
Hispanic	10	15	20	24	23
White	485	631	656	739	807
Unknown	92	63	104	114	78
Female Total	607	734	807	908	942
% Non-White*	4.9%	5.1%	6.0%	6.0%	5.5%
% Female	73.8%	76.3%	76.6%	78.2%	77.0%
% of Female Degree Seeking Graduate Students	74.6%	79.5%	79.8%	80.1%	85.0%
% of Female Graduate Students	30.1%	36.7%	40.6%	41.0%	49.0%
Male					
Non Resident Alien	5	3	5	4	5
Black	6	4	3	1	2
American Indian	0	0	0	0	0
Asian Pacific Islander	1	2	2	2	4
Hispanic	4	1	3	5	5
White	163	190	197	204	239
Unknown	37	28	37	37	26
Male Total	216	228	247	253	281
% Non-White*	6.3%	3.6%	3.9%	3.8%	4.4%
% Male	26.2%	23.7%	23.4%	21.8%	23.0%
% of Male Degree Seeking Graduate Students	80.0%	80.0%	81.0%	83.8%	85.7%
% of Male Graduate Students	36.1%	39.7%	42.7%	45.3%	50.4%
Total					
Non Resident Alien	10	9	10	12	15
Black	16	17	18	12	17
American Indian	1	1	2	2	1
Asian Pacific Islander	5	7	7	12	12
Hispanic	14	16	23	29	28
White	648	821	853	943	1046
Unknown	129	91	141	151	104
Total	823	962	1054	1161	1223
% Non-White*	5.3%	4.8%	5.5%	5.5%	5.3%
% of Degree Seeking Graduate Students	75.9%	79.6%	80.1%	80.9%	85.2%
% of Graduate Headcount	31.5%	37.3%	41.1%	41.8%	49.4%

* % Non-White excludes Non-resident Alien Students and students with unknown race.

**FALL GRADUATE HEADCOUNT 2003—2007
NON-DEGREE SEEKING**

	2003	2004	2005	2006	2007
Female					
Non Resident Alien	10	12	13	11	9
Black	3	2	8	10	8
American Indian	2	1	0	2	2
Asian Pacific Islander	3	1	4	2	4
Hispanic	13	11	16	17	8
White	725	778	474	512	493
Unknown	444	273	462	529	289
Female Total	1200	1078	977	1083	813
% Non-White*	2.8%	1.9%	5.6%	5.7%	4.3%
% Female	78.5%	78.8%	78.1%	80.8%	78.0%
% of Female Graduate Students	59.6%	53.9%	49.1%	48.9%	42.3%
Male					
Non Resident Alien	12	7	6	4	7
Black	3	2	1	5	2
American Indian	1	0	0	2	0
Asian Pacific Islander	0	0	2	1	3
Hispanic	4	0	2	2	3
White	203	221	157	155	158
Unknown	105	60	106	88	56
Male Total	328	290	274	257	229
% Non-White*	3.8%	0.9%	3.1%	6.1%	4.8%
% Male	21.5%	21.2%	21.9%	19.2%	22.0%
% of Male Graduate Students	54.8%	50.4%	47.3%	46.0%	41.1%
Total					
Non Resident Alien	22	19	19	15	16
Black	6	4	9	15	10
American Indian	3	1	0	4	2
Asian Pacific Islander	3	1	6	3	7
Hispanic	17	11	18	19	11
White	928	999	631	667	651
Unknown	549	333	568	617	345
Total	1528	1368	1251	1340	1042
% Non-White*	3.0%	1.7%	5.0%	5.8%	4.4%
% of Graduate Headcount	58.5%	53.1%	48.7%	48.3%	42.1%

* % Non-White excludes Non-resident Alien Students and students with unknown race.

ANNUAL ENROLLMENT FY2003—2007

	FY2003	FY2004	FY2005	FY2006	FY2007
Headcount					
Undergraduate	8682	8679	8723	9073	9250
Graduate	6694	7014	6658	6934	6498
Both*	99	77	41	46	75
Headcount Total	15475	15770	15422	16053	15748
FTE					
Undergraduate	5433	5567	5887	6286	6544
Graduate	1683	1773	1786	1909	1919
FTE Total	7116	7340	7673	8195	8463

**FALL UNDERGRADUATE HEADCOUNT 2003—2007
BY MAJOR**

	2003	2004	2005	2006	2007
ART	212	201	191	180	192
BIOLOGY	268	275	317	325	353
BUSINESS ADMINISTRATION	1064	1149	1249	1282	1301
CARTOGRAPHY	18	22	18	20	18
CHEMISTRY	39	45	48	57	57
COMMUNICATIONS	294	292	310	320	322
COMPUTER SCIENCE	142	122	99	94	89
CRIMINAL JUSTICE	439	457	492	509	529
ECONOMICS	14	19	16	21	33
EDUCATION	729	761	791	752	749
ENGLISH	206	223	217	213	242
FIRE SCIENCE	25	36	31	37	37
GENERAL/LIBERAL STUDIES	21	48	59	85	112
GEOGRAPHY	93	98	93	82	78
GEOLOGICAL SCIENCES	41	22	24	34	49
HISTORY	163	185	217	255	235
MATH	58	71	73	69	56
MUSIC		13	49	66	77
NURSING	536	576	714	808	881
OCCUPATIONAL THERAPY	36	34	29	22	28
POLITICAL SCIENCE	68	74	73	73	74
PSYCHOLOGY	424	434	484	453	468
SOCIAL WORK	114	124	143	174	170
SOCIOLOGY	148	158	183	179	185
SPANISH	43	33	36	46	45
SPORT, FITNESS & LEISURE STUDIES	207	225	272	299	317
THEATRE	165	165	178	172	173
UNDECLARED	560	590	646	576	594

**FALL GRADUATE HEADCOUNT 2003—2007
BY PROGRAM**

	2003	2004	2005	2006	2007
ART- MAT	4	9	15	18	14
BILINGUAL EDUCATION - MED	5	3	1		1
BIOLOGY - MAT	2		2	8	7
BUSINESS - MBA	52	65	74	78	59
CHEMISTRY - MAT	1	2	1	1	1
COUNSELING & PSYCHOLOGICAL SERVICES - MS	43	48	61	58	57
CRIMINAL JUSTICE - MS				6	14
EARLY CHILDHOOD EDUCATION - MED	34	31	34	28	38
EDUCATIONAL LEADERSHIP - MED	55	21	17	15	8
ELEMENTARY EDUCATION - MED	118	138	148	137	115
ENGLISH - MA	26	32	24	25	38
ENGLISH - MA/MAT	7	8	9	17	21
ENGLISH - MAT	16	19	18	19	25
ENGLISH AS A SECOND LANGUAGE - MAT	33	26	19	20	18
FIELD BASED - MED	26	4	1	9	14
GENERAL SCIENCE - MAT				2	3
GEO-INFORMATION SCIENCE - MS	9	8	7	6	8
HIGHER EDUCATION IN STUDENT AFFAIRS - MED		17	26	26	32
HISTORY - MA	23	29	38	36	47
HISTORY - MAT	7	11	7	8	18
LIBRARY MEDIA STUDIES - MED	18	16	19	19	32
MATHEMATICS - MAT	1	4	5	10	12
MATHEMATICS - MS	7	7	6	16	12
MIDDLE SCHOOL MATH - MAT			9	10	10
MIDDLE SCHOOL - MED	43	41	37	25	34
MSN/MBA	2	1	2	1	2
NURSING - MSN	18	24	44	67	67
NURSING - RN/MSN		1		1	2
OCCUPATIONAL THERAPY - MS				5	16
PHYSICAL EDUCATION - MED	17	12	19	24	24
READING - MED	58	65	80	104	64
SCHOOL BUSINESS OFFICER			1	2	1
SCHOOL COUNSELING - MED	56	57	55	53	46
SECONDARY EDUCATION - MED	61	84	57	42	40
SOCIAL WORK - MSW	224	234	217	229	217
SPANISH - MAT		8	11	20	27
SPECIAL EDUCATION - MED	116	139	145	138	145
TECHNOLOGY IN EDUCATION - MED	21	15	18	11	13
CAGS - EDUCATION	46	66	89	84	73
ADVANCED PROFESSIONAL STUDIES - COUNSELING	2	2	5	4	6
CERTIFICATES/LICENSURE PROGRAMS	14	18	33	53	52

LEFT BLANK INTENTIONALLY

outcomes

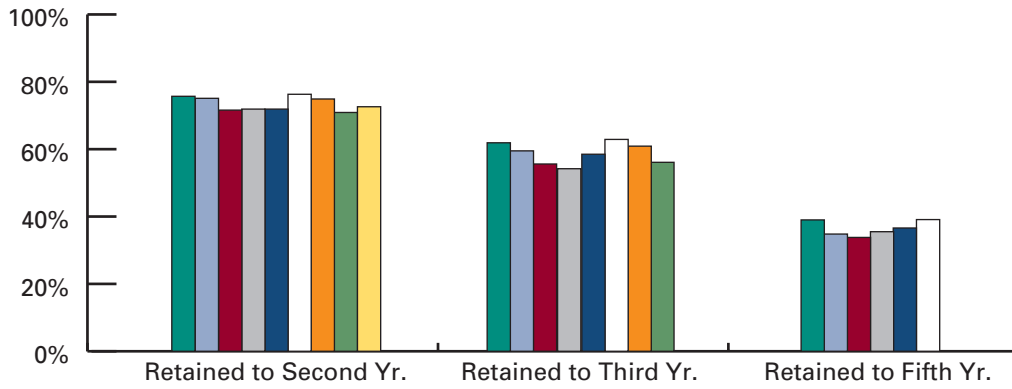
**Retention and > > >
Completion
At a Glance**



RETENTION AND COMPLETION

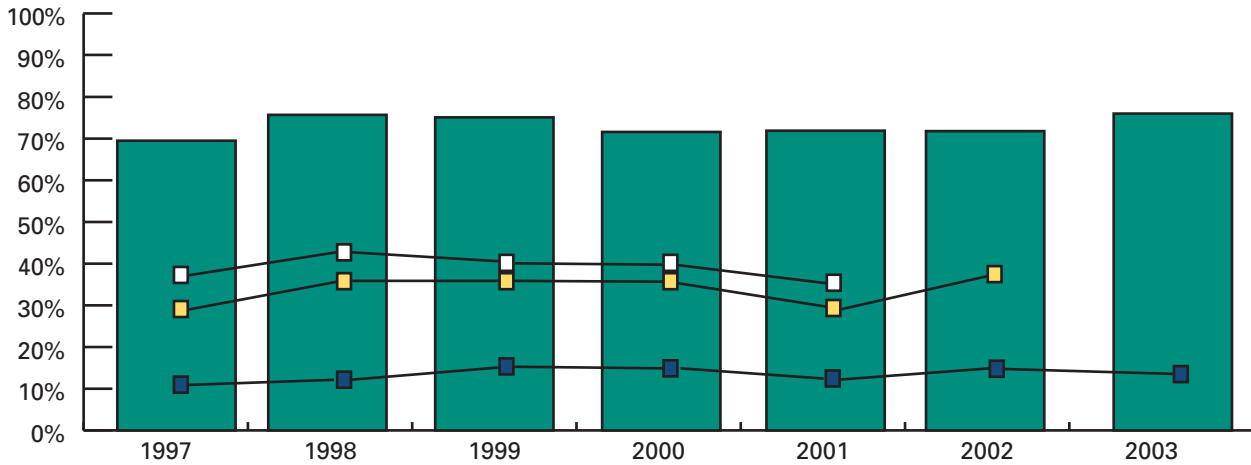
Undergraduate Cohort Retention

■ 1998 Cohort ■ 1999 Cohort ■ 2000 Cohort ■ 2001 Cohort
■ 2002 Cohort ■ 2003 Cohort ■ 2004 Cohort ■ 2005 Cohort ■ 2006 Cohort



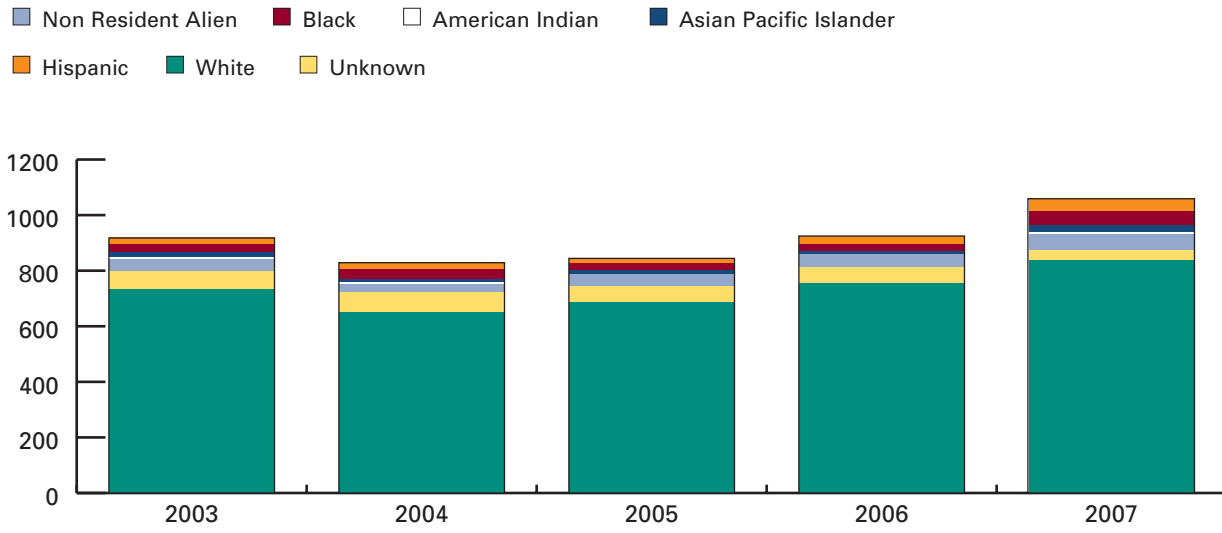
First Year Retention and 4-6 year Graduation Rates Cohorts 1997-2003

■ Retention Rates ■ Cumulative % Graduated - 4 Years
■ Cumulative % Graduated - 5 Years ■ Cumulative % Graduated - 6 Years

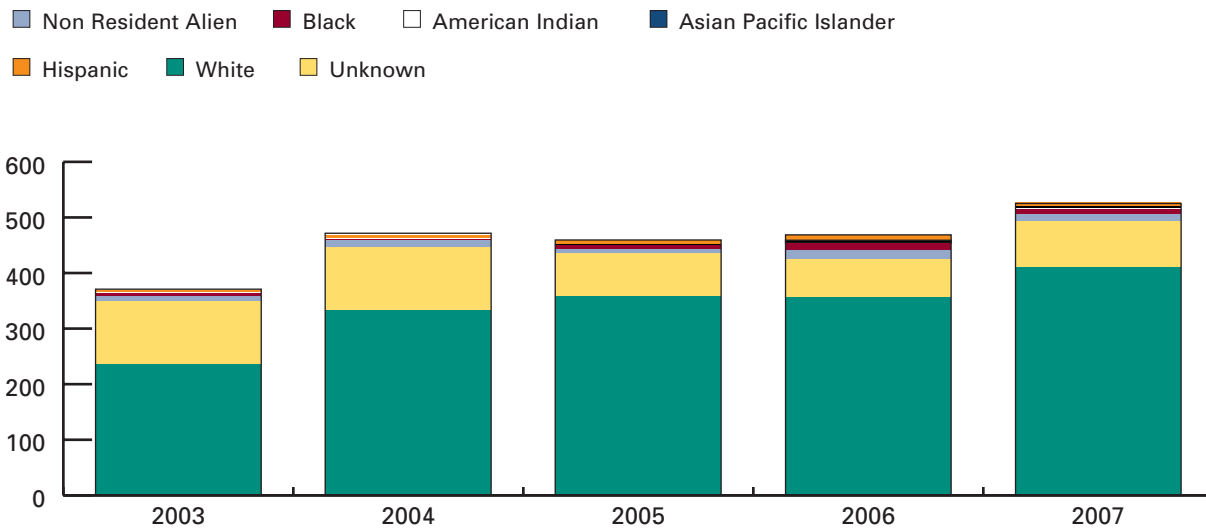


RETENTION AND COMPLETION

Undergraduate Degrees Conferred, by Race, 2003-2007



Graduate Degrees Conferred, by Race, 2003-2007



LEFT BLANK INTENTIONALLY

outcomes

**Retention and > > >
Completion
Tables**



**RETENTION AND CONTINUATION
TOTAL AND BY GENDER**

Cohort Type	Cohort Year	Headcount	Retention Rate	% Continued			
				to 3rd Year	to 5th Year	to 6th Year	to 7th Year
Total Cohort	1997	718	69.5%	56.8%	36.5%	14.1%	7.2%
	1998	746	75.7%	61.9%	39.0%	11.5%	4.2%
	1999	486	75.1%	59.5%	34.8%	10.5%	5.8%
	2000	585	71.6%	55.2%	33.5%	10.8%	4.8%
	2001	825	71.9%	54.1%	35.0%	12.2%	4.5%
	2002	837	71.8%	58.5%	36.6%	13.7%	
	2003	994	76.0%	62.9%	39.1%		
	2004	1022	74.9%	60.9%			
	2005	1208	70.9%	56.1%			
	2006	1129	72.6%				
Female	1997	438	73.1%	61.9%	40.6%	15.1%	7.1%
	1998	468	76.7%	63.2%	39.1%	9.8%	3.8%
	1999	310	78.1%	62.3%	35.8%	11.3%	6.1%
	2000	376	74.7%	57.7%	35.6%	9.6%	3.5%
	2001	522	71.1%	55.2%	37.0%	11.3%	4.4%
	2002	562	73.7%	61.4%	37.7%	13.0%	
	2003	624	75.2%	62.0%	37.7%		
	2004	654	78.0%	64.5%			
	2005	803	71.7%	57.7%			
	2006	712	73.6%				
Male	1997	280	63.9%	48.9%	30.0%	12.5%	7.5%
	1998	278	74.1%	59.7%	38.8%	14.4%	4.7%
	1999	176	69.9%	54.5%	33.0%	10.2%	5.1%
	2000	206	66.0%	51.0%	30.1%	13.1%	7.3%
	2001	303	73.3%	52.2%	31.7%	13.9%	4.6%
	2002	275	68.0%	52.7%	34.2%	15.3%	
	2003	370	77.3%	64.3%	41.6%		
	2004	368	69.3%	54.4%			
	2005	405	69.1%	53.1%			
	2006	417	71.0%				

RETENTION AND CONTINUATION BY RACE

Cohort Type	Cohort Year	Headcount	Retention Rate	% Continued			
				to 3rd Year	to 5th Year	to 6th Year	to 7th Year
Black	1997	49	73.5%	55.1%	34.7%	14.3%	12.2%
	1998	44	86.4%	79.5%	43.2%	18.2%	8.7%
	1999	24	70.8%	62.5%	45.8%	20.8%	0.0%
	2000	27	66.7%	37.0%	25.9%	11.1%	7.4%
	2001	12	58.3%	33.3%	41.7%	25.0%	8.3%
	2002	23	78.3%	60.9%	43.5%	30.4%	
	2003	61	80.3%	63.9%	45.9%		
	2004	89	84.3%	61.8%			
	2005	83	71.1%	53.0%			
2006	105	76.2%					
American Indian	1998	6	33.3%	33.3%	16.7%	16.7%	0.0%
Alaskan Native*	2000	14	71.4%	57.1%	28.6%	14.3%	
	2003	6	66.7%	66.7%			
	2004	4	75.0%	25.0%			
Asian Pacific Islander	1997	14	78.6%	57.1%	21.4%	21.4%	0.0%
	1998	21	71.4%	61.9%	42.9%	14.3%	4.8%
	1999	18	66.7%	50.0%	16.7%	5.6%	0.0%
	2000	4	100.0%	75.0%	75.0%	25.0%	25.0%
	2001	7	100.0%	100.0%	42.9%	0.0%	14.3%
	2002	35	77.1%	65.7%	45.7%	25.7%	
	2003	23	82.6%	69.6%	43.5%		
	2004	35	68.6%	62.9%			
	2005	43	69.8%	48.8%			
2006	38	52.6%					
Hispanic	1997	38	71.1%	60.5%	42.1%	15.8%	7.9%
	1998	39	76.9%	59.0%	38.5%	20.5%	5.1%
	1999	19	78.9%	52.6%	31.6%	21.1%	10.5%
	2000	5	80.0%	60.0%	0.0%	20.0%	0.0%
	2001	19	79.0%	47.4%	15.8%	10.5%	5.2%
	2002	41	68.3%	56.1%	36.6%	14.6%	
	2003	70	74.3%	57.1%	41.4%		
	2004	83	74.7%	55.4%			
	2005	92	67.4%	56.5%			
2006	102	71.6%					
White	1997	550	68.7%	56.4%	38.5%	14.5%	7.3%
	1998	566	76.0%	61.1%	39.2%	9.9%	3.2%
	1999	363	74.1%	59.5%	36.4%	10.5%	6.1%
	2000	442	72.4%	55.4%	33.5%	10.0%	4.3%
	2001	740	71.8%	53.2%	34.9%	12.2%	4.1%
	2002	695	71.2%	58.0%	35.8%	11.7%	
	2003	802	75.6%	63.3%	38.4%		
	2004	782	73.9%	60.7%			
	2005	943	70.6%	55.7%			
2006	839	73.1%					
Non-Resident Alien	1997	28	75.0%	64.3%	21.4%	10.7%	7.1%
	1998	35	68.6%	60.0%	20.0%	5.7%	7.1%
	1999	27	88.9%	66.7%	14.8%	0.0%	0.0%
	2000	31	64.5%	58.1%	29.0%	9.7%	3.2%
	2001	40	75.0%	70.0%	45.0%	12.5%	10.0%
	2002	22	77.3%	63.6%	45.5%	27.3%	
	2003	18	66.7%	50.0%	22.2%		
	2004	26	76.9%	76.9%			
	2005	28	89.3%	64.3%			
2006	22	72.7%					

To protect the privacy of individuals, rates for cohorts of 3 or less are not reported.

**GRADUATION RATES
TOTAL AND BY GENDER**

Cohort Type	Cohort Year	Headcount	Retention Rate	Cumulative % Graduated		
				in 4 Years	in 5 Years	in 6 Years
Total	1997	718	69.5%	9.6%	29.7%	37.0%
	1998	746	75.7%	11.3%	35.9%	42.4%
	1999	486	75.1%	14.6%	34.6%	39.9%
	2000	585	71.6%	14.0%	34.4%	40.0%
	2001	825	71.9%	11.3%	29.2%	37.0%
	2002	837	71.8%	14.3%	35.9%	
	2003	994	76.0%	13.4%		
Female	1997	438	73.1%	11.2%	35.4%	42.7%
	1998	468	76.7%	13.9%	41.2%	47.6%
	1999	310	78.1%	16.5%	39.0%	43.9%
	2000	376	74.7%	15.7%	38.6%	44.7%
	2001	522	71.1%	12.6%	32.8%	40.3%
	2002	562	73.7%	16.9%	39.5%	
	2003	624	75.2%	15.5%		
Male	1997	280	63.9%	7.1%	20.7%	28.2%
	1998	278	74.1%	6.8%	27.0%	33.5%
	1999	176	69.9%	11.4%	26.7%	33.0%
	2000	206	66.0%	10.7%	26.7%	31.6%
	2001	303	73.3%	8.9%	23.1%	30.1%
	2002	275	68.0%	9.1%	28.7%	
	2003	370	77.3%	9.7%		

**GRADUATION RATES
BY RACE**

Cohort Type	Cohort Year	Headcount	Retention Rate	Cumulative % Graduated		
				in 4 Years	in 5 Years	in 6 Years
Black	1997	49	73.5%	14.3%	28.6%	36.7%
	1998	44	86.4%	6.8%	27.3%	34.8%
	1999	24	70.8%	8.3%	25.0%	37.5%
	2000	27	66.7%	0.0%	7.4%	11.1%
	2001	12	58.3%	0.0%	0.0%	16.7%
	2002	23	78.3%	4.4%	26.1%	
	2003	61	80.3%	13.1%		
American Indian	1998	6	33.3%	0.0%	0.0%	16.7%
Alaskan Native	2000	14	71.4%	21.4%	28.6%	35.7%
	2003	6	66.7%	0.0%		
Asian Pacific Islander	1997	14	78.6%	14.3%	35.7%	50.0%
	1998	21	71.4%	14.3%	38.1%	42.9%
	1999	18	66.7%	27.8%	33.3%	44.4%
	2000	4	100.0%	25.0%	50.0%	50.0%
	2001	7	100.0%	28.6%	57.1%	57.1%
	2002	35	77.1%	8.6%	34.3%	
	2003	23	82.6%	13.0%		
Hispanic	1997	38	71.1%	5.3%	26.3%	31.6%
	1998	39	76.9%	2.6%	12.8%	23.1%
	1999	19	78.9%	10.5%	21.1%	26.3%
	2000	5	80.0%	0.0%	0.0%	20.0%
	2001	19	79.0%	10.5%	26.3%	31.6%
	2002	41	68.3%	7.3%	26.8%	
	2003	70	74.3%	5.7%		
White	1997	550	68.7%	8.4%	29.6%	37.1%
	1998	566	76.0%	10.8%	37.6%	43.8%
	1999	363	74.1%	12.7%	34.4%	39.9%
	2000	442	72.4%	14.5%	36.2%	41.6%
	2001	740	71.8%	11.0%	28.9%	36.2%
	2002	695	71.2%	15.3%	37.6%	
	2003	802	75.6%	14.2%		
Non-Resident Alien	1997	28	75.0%	25.0%	35.7%	42.9%
	1998	35	68.6%	40.0%	57.1%	71.4%
	1999	27	88.9%	48.1%	55.6%	55.6%
	2000	31	64.5%	25.8%	41.9%	45.2%
	2001	40	75.0%	20.0%	45.0%	55.0%
	2002	22	77.3%	13.6%	27.3%	
	2003	18	66.7%	11.1%		

To protect the privacy of individuals, rates for cohorts of 3 or less are not reported.

**DEGREES CONFERRED 2003—2007
BY GENDER AND RACE**

	2003	2004	2005	2006	2007
Female					
Non Resident Alien	36	26	27	36	38
Black	18	23	26	23	37
American Indian	5	4	3		5
Asian Pacific Islander	13	6	10	16	26
Hispanic	19	23	14	28	40
White	678	688	744	814	914
Unknown	138	144	99	113	103
Female Total	907	914	923	1030	1163
% Non-White*	7.5%	7.5%	6.6%	7.6%	10.6%
% Female	69.4%	69.1%	69.8%	71.5%	70.8%
Male					
Non Resident Alien	20	15	22	23	34
Black	15	14	3	16	22
American Indian	4	7	1	2	1
Asian Pacific Islander	6	5	5	3	5
Hispanic	7	8	12	11	14
White	293	311	317	323	370
Unknown	54	48	40	32	33
Male Total	399	408	400	410	479
% Non-White*	9.8%	9.9%	6.2%	9.0%	10.2%
% Male	30.6%	30.9%	30.2%	28.5%	29.2%
Total					
Non Resident Alien	56	41	49	59	72
Black	33	37	29	39	59
American Indian	9	11	4	2	6
Asian Pacific Islander	19	11	15	19	31
Hispanic	26	31	26	39	54
White	971	999	1061	1137	1284
Unknown	192	192	139	145	136
Total	1306	1322	1323	1440	1642
% Non-White*	8.2%	8.3%	6.5%	8.0%	10.5%

* % Non-White excludes Non-resident Alien Students and students with unknown race.

**DEGREES CONFERRED 2003—2007
BY GENDER AND DEGREE**

	2003	2004	2005	2006	2007
Female					
Bachelor of Arts	60	63	86	100	69
Bachelor of Science	404	342	351	401	477
Bachelor of Science Business Administration	97	100	100	88	114
Bachelor of Fine Arts	6	6	4	5	5
Bachelor of General/Liberal Studies	10	8	1	6	4
Bachelor of Social Work	19	18	18	28	22
Master of Arts	5	8	6	7	8
Master of Science	26	17	12	29	32
Master of Social Work	61	70	72	67	62
Master of Business Administration	9	11	11	11	14
Master of Education	179	235	227	226	288
Master of Arts in Teaching	14	18	23	24	24
MSN/MBA	1			1	
Master of Arts/Master of Arts in Teaching				1	1
Certificate - Advanced Graduate Study	15	17	12	32	37
Other Graduate Certificates				4	4
Teacher Certification/Licensure	1	1			2
Female Total	907	914	923	1030	1163
Male					
Bachelor of Arts	52	34	42	46	52
Bachelor of Science	177	159	149	160	181
Bachelor of Science Business Administration	84	89	85	74	128
Bachelor of Fine Arts	2	4	5	7	3
Bachelor of General/Liberal Studies	4	5	4	8	3
Bachelor of Social Work	4	2		1	1
Master of Arts	5	2	9	7	13
Master of Science	9	7	10	12	10
Master of Social Work	4	8	12	7	8
Master of Business Administration	10	16	7	9	15
Master of Education	45	68	64	56	45
Master of Arts in Teaching	1	8	5	11	7
Master of Arts/Master of Arts in Teaching					1
MSN/MBA					
Certificate - Advanced Graduate Study	2	6	8	10	12
Other Graduate Certificates				2	
Male Total	399	408	400	410	479

Female and Male may not equal total degrees due to unknown gender.

**DEGREES CONFERRED 2003—2007
BY LEVEL AND RACE**

	2003	2004	2005	2006	2007
Bachelors					
Non Resident Alien	46	30	42	45	57
Black	29	34	23	23	50
American Indian	6	9	3	2	5
Asian Pacific Islander	18	10	13	14	26
Hispanic	23	26	20	29	46
White	734	649	687	753	837
Unknown	63	72	57	58	38
Bachelors Total	919	830	845	924	1059
% Non-White*	9.4%	10.9%	7.9%	8.3%	13.2%
% Female	64.9%	64.7%	66.3%	68.0%	65.3%
Masters					
Non Resident Alien	10	11	7	16	14
Black	4	3	6	13	9
American Indian	3	2	1		1
Asian Pacific Islander	1		2	5	4
Hispanic	3	5	6	9	8
White	234	333	358	357	411
Unknown	114	114	78	68	81
Masters Total	369	468	458	468	528
% Non-White*	4.5%	2.9%	4.0%	7.0%	5.1%
% Female	79.9%	76.7%	76.6%	78.2%	81.3%
Certificates					
Non Resident Alien				1	1
Black					
American Indian					
Asian Pacific Islander		1			1
Hispanic				1	
White	3	17	16	27	36
Unknown	15	6	4	19	17
Certificate Total	18	24	20	48	55
% Non-White*	0.0%	5.6%	0.0%	3.6%	2.7%
% Female	88.9%	75.0%	60.0%	75.0%	78.2%

* % Non-White excludes Non-resident Alien Students and students with unknown race.

**UNDERGRADUATE DEGREES CONFERRED 2003—2007
BY MAJOR**

	2003	2004	2005	2006	2007
ART	40	26	36	41	40
BIOLOGY	22	25	27	25	36
BUSINESS ADMINISTRATION	181	189	185	162	242
CARTOGRAPHY	8	5	5	6	4
CHEMISTRY	10	5	4	10	10
COMMUNICATIONS	46	59	59	59	71
COMPUTER SCIENCE	11	16	21	15	11
CRIMINAL JUSTICE	67	73	61	73	82
ECONOMICS	4	3	4	4	3
EDUCATION	172	93	106	112	129
ENGLISH	30	22	41	37	26
FIRE SCIENCE	15	8	8	11	9
GENERAL/LIBERAL STUDIES	14	13	5	14	7
GEOGRAPHY	24	29	27	14	19
GEOLOGICAL SCIENCE	3	15	5	4	7
HISTORY	22	20	23	27	27
MATHEMATICS	4	5	11	9	18
MUSIC				2	3
NURSING	73	61	63	81	125
OCCUPATIONAL THERAPY	10	7	9	8	5
OFFICE MANAGEMENT	1	3		1	
POLITICAL SCIENCE	10	11	14	15	11
PSYCHOLOGY	57	50	55	65	61
SOCIAL WORK	23	20	18	29	23
SOCIOLOGY	23	21	13	23	24
SPANISH	1	8	4	6	3
SPORT, FITNESS & LEISURE STUDIES	34	21	27	46	44
THEATER	14	22	14	25	19
Total	919	830	845	924	1059

To provide an unduplicated headcount, double majors are counted under only one major. Therefore, the counts for individual majors are not complete. This is particularly important since students pursuing teaching with an education major are also required to complete a major in an Arts and Science discipline.

**GRADUATE DEGREES CONFERRED 2003—2007
BY PROGRAM**

DEGREES	2003	2004	2005	2006	2007
BUSINESS ADMINISTRATION	19	27	18	20	29
COUNSELING	20	17	12	24	15
EDUCATION	239	329	319	309	364
ENGLISH	4	8	10	18	9
GEO-INFORMATION	1	3	4	4	5
HISTORY	6	2	5	5	14
MATHEMATICS	4	2	3		5
NURSING	10	2	3	13	17
NURSING/MBA	1			1	
SOCIAL WORK	65	78	84	74	70
Total	369	468	458	468	528

CERTIFICATES	2003	2004	2005	2006	2007
CAGS - EDUCATION	17	23	20	42	47
CAGS - COUNSELING				1	2
CERTIFIED FINANCIAL PLANNER				4	2
CERTIFICATE NURSE EDUCATION				1	2
TEACHER CERTIFICATION/LICENSURE	1	1			2
Total	18	24	20	48	55

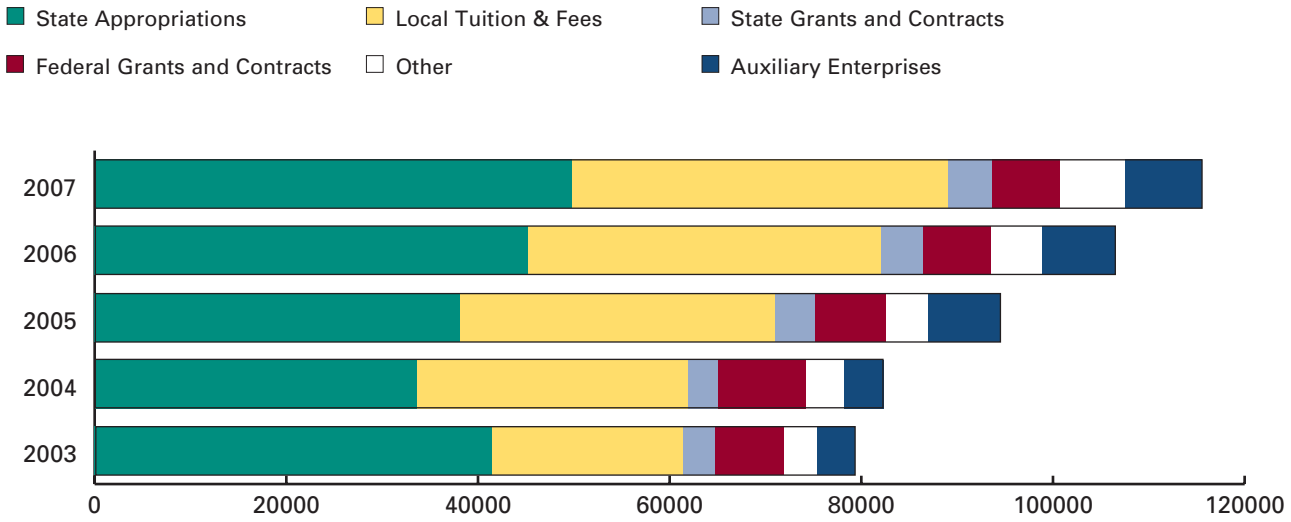
resources

College Resources > > >
At a Glance

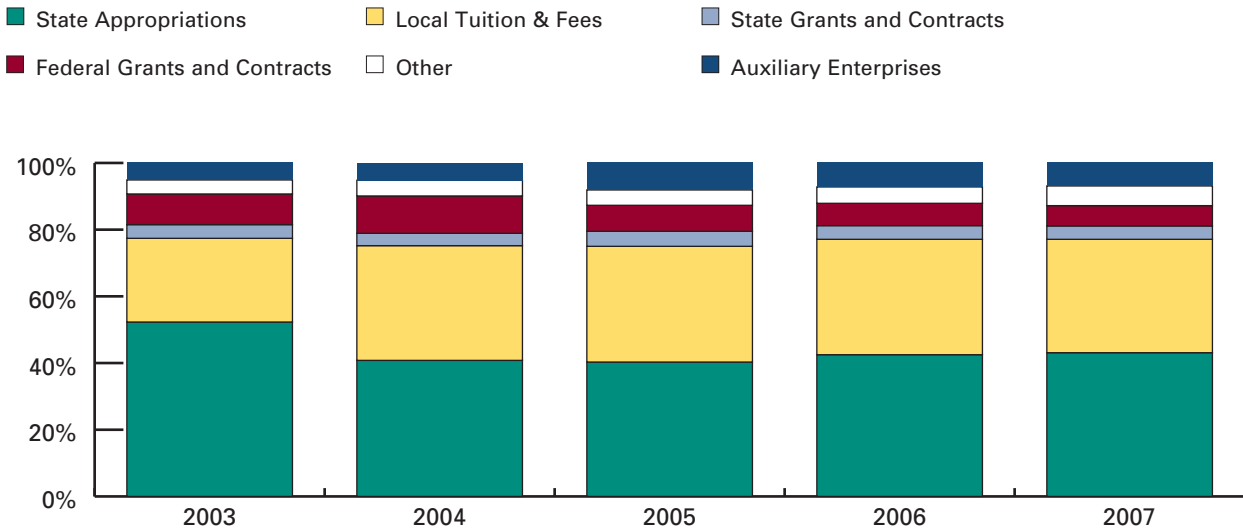


COLLEGE RESOURCES: REVENUES

Revenues FY2003 - FY2007 (in Millions)

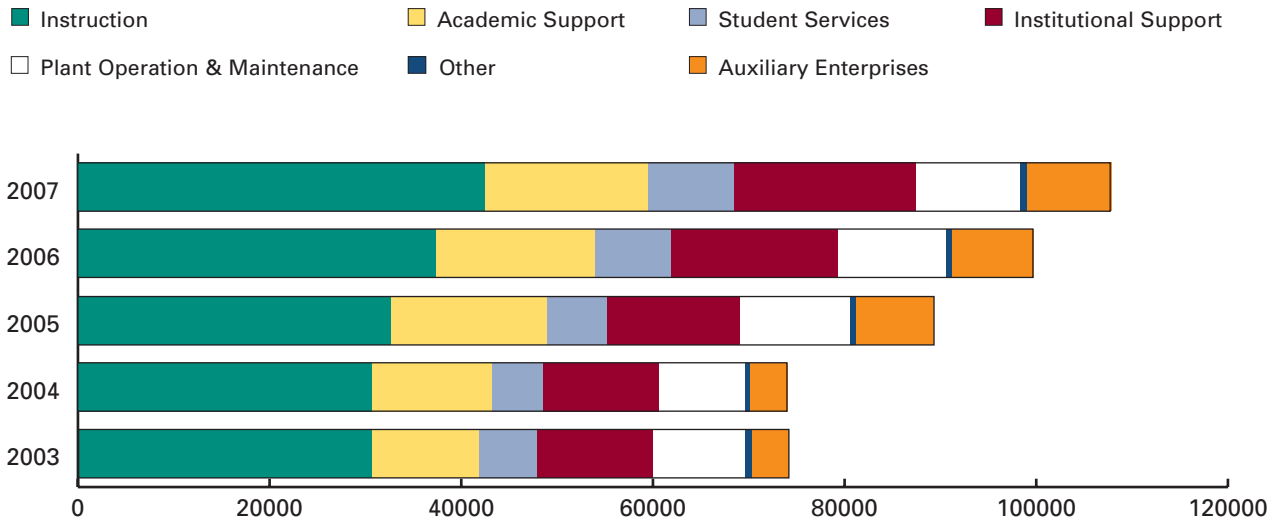


Revenues FY2003 - FY2007 (Revenue Category as % of Total Revenues)

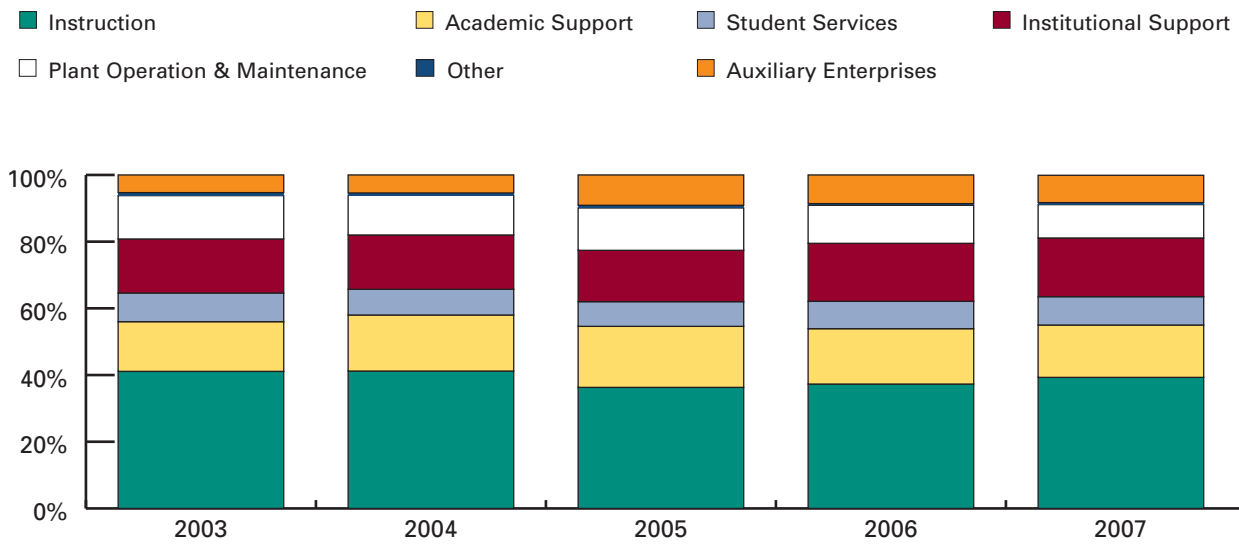


COLLEGE RESOURCES: OPERATING EXPENSES

Operating Expenses FY2003 - FY2007 (in Millions)

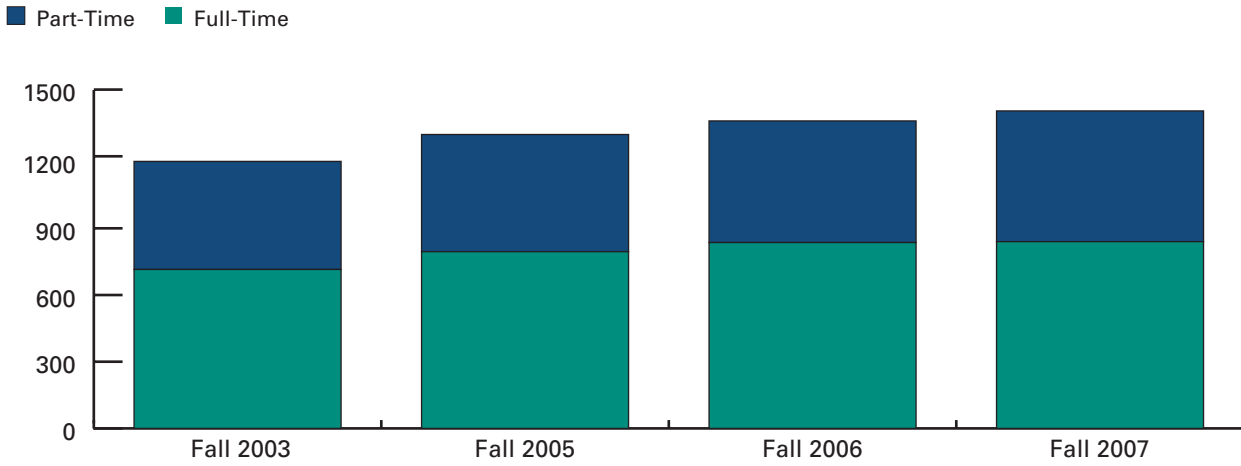


Operating Expenses FY2003 - FY2007 (Expense Categories as % of Total Expenditures)

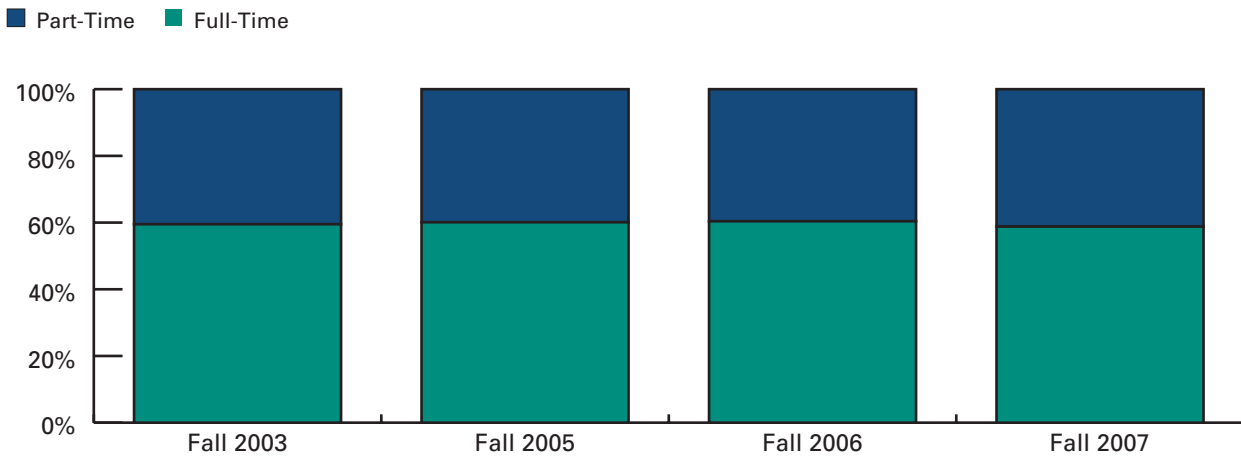


COLLEGE RESOURCES: EMPLOYEES

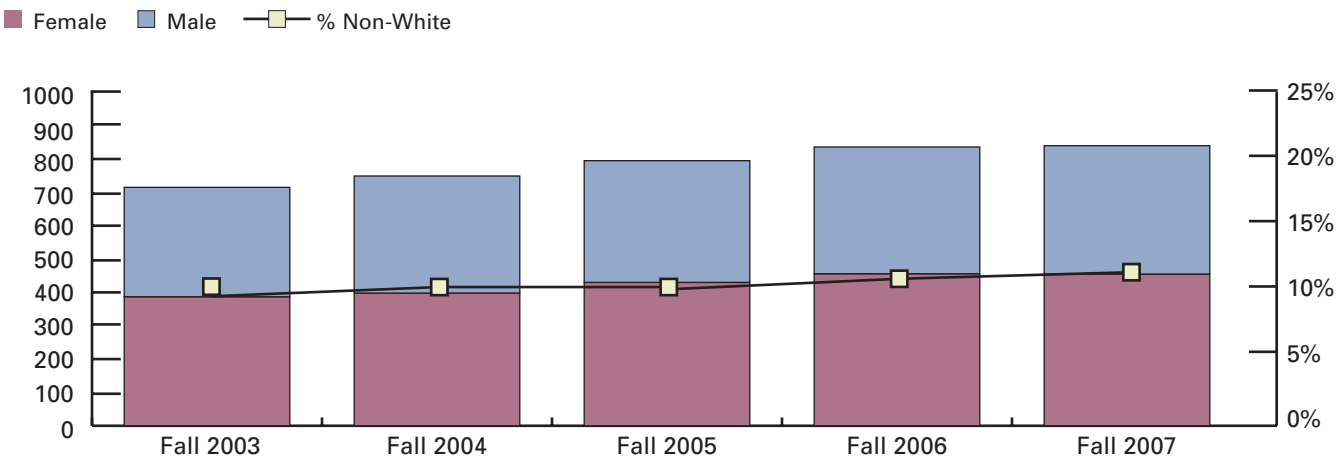
Employee Headcount: Full-time/Part-time



Proportion Full-time/Part-time: All Employees



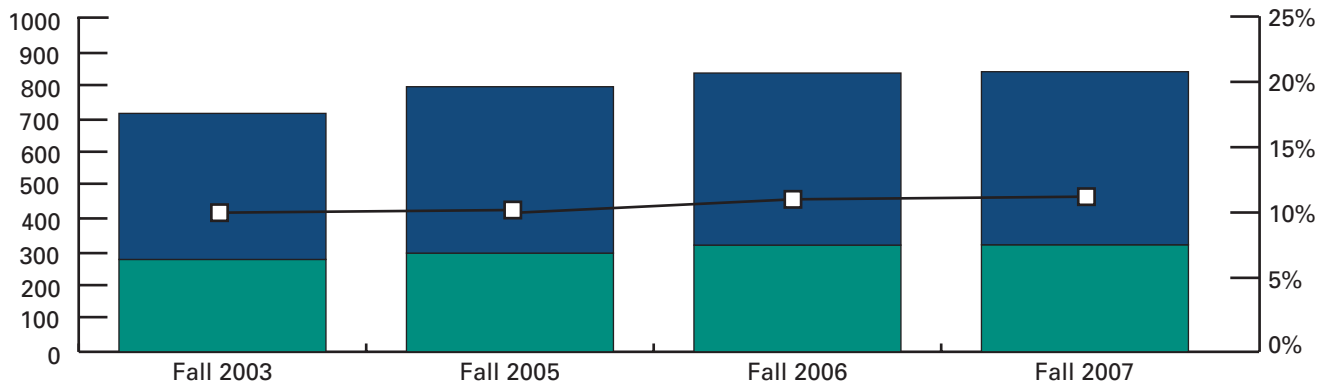
All Full Time Employees by Gender



COLLEGE RESOURCES: EMPLOYEES

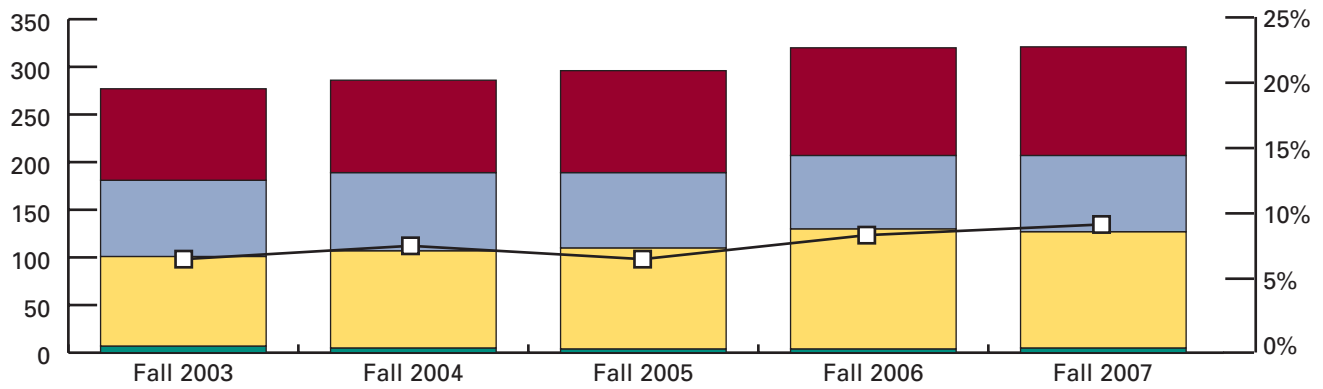
All Full-Time Employees: Faculty or Staff

■ Full-Time Staff ■ Full-Time Faculty —□— % Non-White



Full-Time Faculty by Rank

■ Instructor ■ Associate Professor —□— % Non-White
 ■ Assistant Professor ■ Professor



LEFT BLANK INTENTIONALLY

resources

College Resources > > >
Tables



REVENUES 2003—2007 (IN MILLIONS)

	2003	2004	2005	2006	2007
LOCAL TUITION & FEES	\$19,928	\$28,319	\$32,799	\$36,798	\$39,235
STATE APPROPRIATIONS	\$41,476	\$33,589	\$38,113	\$45,246	\$49,759
FEDERAL GRANTS and CONTRACTS	\$7,284	\$9,233	\$7,394	\$7,140	\$7,078
STATE GRANTS and CONTRACTS	\$3,261	\$3,074	\$4,256	\$4,354	\$4,619
PRIVATE GRANTS & GIFTS	\$313	\$700	\$926	\$1,110	\$1,362
INDEPENDENT OPERATIONS	\$358	\$-	\$-	\$-	\$-
OTHER	\$2,685	\$3,208	\$3,392	\$4,125	\$5,470
AUXILIARY ENTERPRISES	\$4,022	\$4,200	\$7,674	\$7,649	\$7,978
TOTAL	\$79,327	\$82,323	\$94,554	\$106,422	\$115,501

OPERATING EXPENSES 2003—2007 (IN MILLIONS)

	2003	2004	2005	2006	2007
INSTRUCTION	\$30,603	\$30,593	\$32,625	\$37,292	\$42,475
PUBLIC SERVICE	\$513	\$395	\$403	\$339	\$385
ACADEMIC SUPPORT	\$11,105	\$12,483	\$16,441	\$16,605	\$16,973
STUDENT SERVICES	\$6,413	\$5,726	\$6,665	\$8,193	\$9,203
INSTITUTIONAL SUPPORT	\$12,084	\$12,088	\$13,861	\$17,420	\$19,042
PLANT OPERATION & MAINTENANCE	\$9,668	\$8,872	\$11,387	\$11,373	\$10,858
SCHOLARSHIPS & FELLOWSHIPS	\$137	\$143	\$273	\$186	\$298
AUXILIARY ENTERPRISES	\$3,931	\$4,014	\$8,167	\$8,590	\$8,875
TOTAL	\$74,454	\$74,314	\$89,822	\$99,998	\$108,109

Revenues exclude capital and additions to endowment

Operating expenses exclude depreciation

FULL TIME EMPLOYEES BY RACE AND GENDER

	2003	2004	2005	2006	2007
Female					
Non Resident Alien	4	3	3	3	3
Black	14	12	9	8	12
American Indian	0	0	1	1	3
Asian Pacific Islander	5	7	9	10	9
Hispanic	8	8	11	15	15
White	347	359	387	407	399
Unknown	9	9	10	12	14
Female Total	387	398	430	456	455
% Non-White*	7.2%	7.0%	7.2%	7.7%	8.9%
% Female	54.1%	53.1%	54.1%	54.5%	54.2%
Male					
Non Resident Alien	1	1	1	1	1
Black	15	20	22	23	20
American Indian	0	0	0	0	0
Asian Pacific Islander	8	11	12	13	14
Hispanic	18	17	17	21	21
White	266	276	297	307	312
Unknown	20	26	16	15	17
Male Total	328	351	365	380	385
% Non-White*	13.4%	14.8%	14.7%	15.7%	15.0%
% Male	45.9%	46.9%	45.9%	45.5%	45.8%
Total					
Non Resident Alien	5	4	4	4	4
Black	29	32	31	31	32
American Indian	0	0	1	1	3
Asian Pacific Islander	13	18	21	23	23
Hispanic	26	25	28	36	36
White	613	635	684	714	711
Unknown	29	35	26	27	31
Total	715	749	795	836	840
% Non-White*	10.0%	10.6%	10.6%	11.3%	11.7%

* % Non-White excludes Non-resident Alien and Unknown.

PART TIME EMPLOYEES BY RACE AND GENDER

	2003	2004	2005	2006	2007
Female					
Non Resident Alien	2		2	4	4
Black	3		9	8	6
American Indian	0		0	0	0
Asian Pacific Islander	5		5	8	6
Hispanic	4		8	15	17
White	224		267	271	291
Unknown	45		32	29	39
Female Total	283	N/A	323	335	363
% Non-White*	5.1%		7.6%	10.3%	9.1%
% Female	58.2%		61.3%	61.2%	61.7%
Male					
Non Resident Alien	3		1	0	2
Black	3		1	2	4
American Indian	0		0	0	1
Asian Pacific Islander	1		1	2	1
Hispanic	3		1	2	1
White	150		170	181	189
Unknown	43		30	25	27
Male Total	203	N/A	204	212	225
% Non-White*	4.5%		1.7%	3.2%	3.6%
% Male	41.8%		38.7%	38.8%	38.3%
Total					
Non Resident Alien	5		3	4	6
Black	6		10	10	10
American Indian	0		0	0	1
Asian Pacific Islander	6		6	10	7
Hispanic	7		9	17	18
White	374		437	452	480
Unknown	88		62	54	66
Total	486	N/A	527	547	588
% Non-White*	4.8%		5.4%	7.6%	7.0%

* % Non-White excludes Non-resident Alien and Unknown.
Race and Gender information for part-time employees was not reported in 2004.

**FULL TIME FACULTY
BY RACE AND GENDER**

	2003	2004	2005	2006	2007
Female					
Non Resident Alien	0	0	0	0	0
Black	3	3	1	1	2
American Indian	0	0	0	0	1
Asian Pacific Islander	3	4	4	6	6
Hispanic	2	2	3	3	2
White	126	126	135	146	144
Unknown	4	5	4	4	5
Female Total	138	140	147	160	160
% Non-White*	6.0%	6.7%	5.6%	6.4%	7.1%
% Female	49.8%	49.0%	49.7%	50.0%	49.8%
Male					
Non Resident Alien	0	0	0	0	0
Black	3	3	5	5	4
American Indian	0	0	0	0	0
Asian Pacific Islander	7	7	7	10	11
Hispanic	0	1	0	3	2
White	122	125	134	139	139
Unknown	7	10	3	3	5
Male Total	139	146	149	160	161
% Non-White*	7.6%	8.1%	8.2%	11.5%	10.9%
% Male	50.2%	51.0%	50.3%	50.0%	50.2%
Total					
Non Resident Alien	0	0	0	0	0
Black	6	6	6	6	6
American Indian	0	0	0	0	1
Asian Pacific Islander	10	11	11	16	17
Hispanic	2	3	3	6	4
White	248	251	269	285	283
Unknown	11	15	7	7	10
Total	277	286	296	320	321
% Non-White*	6.8%	7.4%	6.9%	8.9%	9.0%

* % Non-White excludes Non-resident Alien and Unknown.

**FULL TIME FACULTY
BY ACADEMIC RANK**

	2003	2004	2005	2006	2007
Professor	96	97	107	113	114
Associate Professor	80	82	79	77	80
Assistant Professor	94	102	106	126	122
Instructor	7	5	4	4	5

**PART TIME FACULTY
BY RACE AND GENDER**

	2003	2004	2005	2006	2007
Female					
Non Resident Alien	0		1	1	1
Black	2		3	4	4
American Indian	0		0	0	0
Asian Pacific Islander	3		5	4	2
Hispanic	1		4	5	5
White	119		177	188	197
Unknown	26		24	26	31
Female Total	151	N/A	214	228	240
% Non-White*	4.8%		6.3%	6.5%	5.3%
% Female	53.0%		57.5%	57.4%	57.7%
Male					
Non Resident Alien	2		1	0	1
Black	2		1	2	3
American Indian	0		0	0	1
Asian Pacific Islander	1		1	2	1
Hispanic	1		1	1	1
White	105		130	143	146
Unknown	23		24	21	23
Male Total	134	N/A	158	169	176
% Non-White*	3.7%		2.3%	3.4%	3.9%
% Male	47.0%		42.5%	42.6%	42.3%
Total					
Non Resident Alien	2		2	1	2
Black	4		4	6	7
American Indian	0		0	0	1
Asian Pacific Islander	4		6	6	3
Hispanic	2		5	6	6
White	224		307	331	343
Unknown	49		48	47	54
Total	285	N/A	372	397	416
% Non-White*	4.3%		4.7%	5.2%	4.7%

* % Non-White excludes Non-resident Alien and Unknown.
Race and Gender information for part-time employees was not reported in 2004.

ENDNOTES AND SOURCES

Admissions Data: HEIRS Submissions Fall 2003 – Fall 2007

Enrollment Data: HEIRS Submissions for Fall 2003 – Fall 2007

Enrollment by Program Data:

Final Fall End of Term Census Data Fall 2003 – Fall 2006; Interim Fall End of Term Census Data Fall 2007

Retention and Completion Data: Submissions to the Center for Student Retention Data Exchange (CSRDE)

Degrees Conferred Data: HEIRS Submissions for FY2003-2007

Resources Data: IPEDS Human Resources and Finance Surveys

INSIDE BACK COVER
BLACK BOARD

BACK COVER
BLACK BOARD